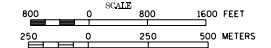


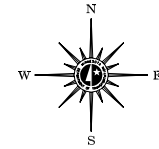
2003 TRAFFIC VOLUMES

MUNICIPALITIES OF
HOUSTON CO.

PREPARED BY THE
MINNESOTA DEPARTMENT OF TRANSPORTATION
PROGRAM SUPPORT GROUP
IN COOPERATION WITH
U.S. DEPARTMENT OF TRANSPORTATION
FEDERAL HIGHWAY ADMINISTRATION



2003
BASIC DATA - 1978



LEGEND

- INTERSTATE TRUNK HIGHWAY.....(I)
- U.S. TRUNK HIGHWAY.....(25)
- STATE TRUNK HIGHWAY.....(16)
- COUNTY STATE AID HIGHWAY.....(C)
- COUNTY ROAD.....(R)
- PUBLIC ROAD.....(P)
- PRIVATE ROAD.....(PR)
- CORPORATE LIMITS.....(---)

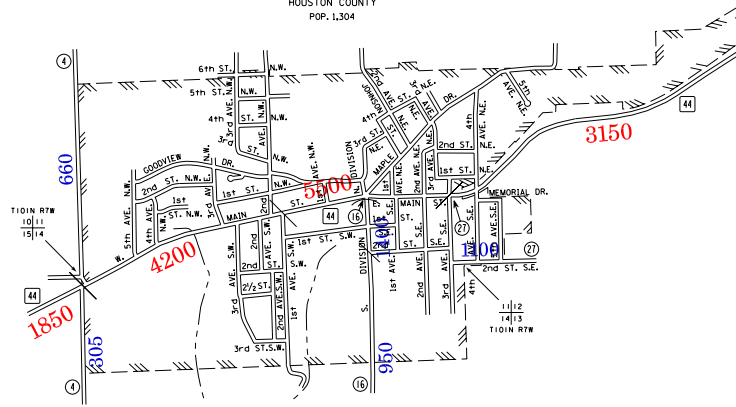
VOLUMES PREPARED BY
THE OFFICE OF
TRANSPORTATION DATA & ANALYSIS

NUMERALS INDICATE AVERAGE DAILY
TRAFFIC VOLUMES ON DESIGNATED ROADS.
TRUNK HIGHWAY ROUTES ARE 2002 A.A.D.T. VOLUMES.
COUNTY SYSTEM ROADS ARE 2003 A.A.D.T. VOLUMES.

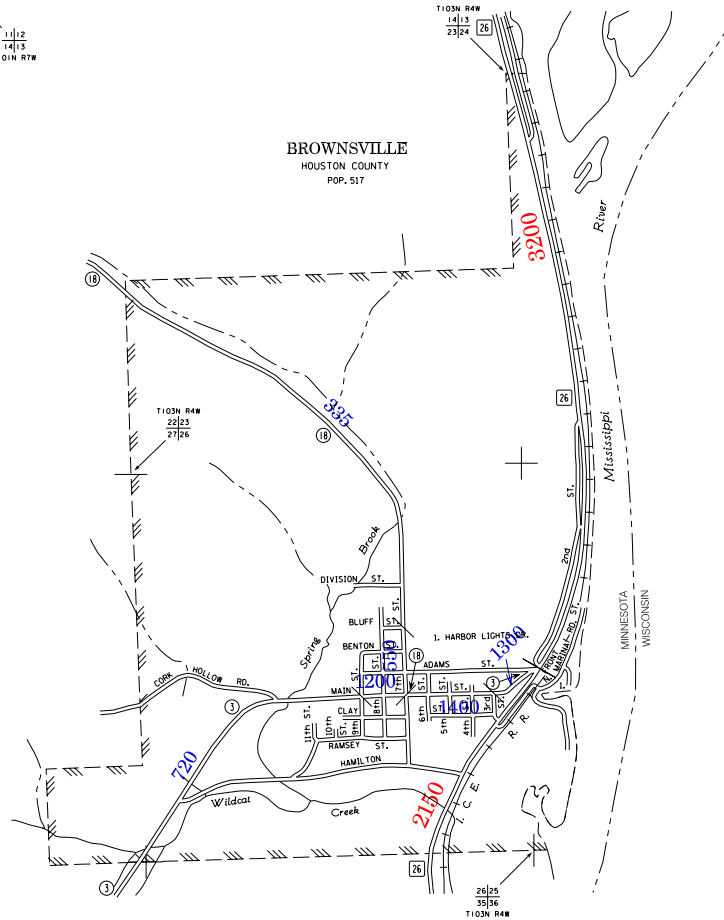
FOR DESIGNATED ROADS :
/ = SEGMENT ENDPOINT FOR ALL
ROADS INTERSECTED BY HAICH
(= SEGMENT ENDPOINT ONLY FOR
ROAD SEPARATED FROM INTERSECTING
ROAD BY ARC

MUNICIPALITIES SHOWN
ON THIS SHEET
BROWNSVILLE
HOUSTON
SPRING GROVE

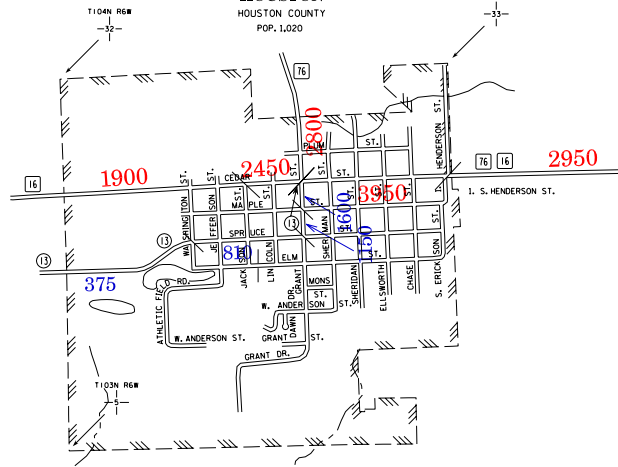
SPRING GROVE
HOUSTON COUNTY
POP. 1,304



BROWNSVILLE
HOUSTON COUNTY
POP. 517



HOUSTON
HOUSTON COUNTY
POP. 1,020



NOTE: 2000 U.S. CENSUS FIGURES SHOWN FOR ALL MUNICIPALITIES UNLESS OTHERWISE STATED.