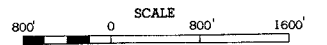


2003 TRAFFIC VOLUMES

MUNICIPALITIES OF  
**BELTRAMI CO.**

PREPARED BY THE  
MINNESOTA DEPARTMENT OF TRANSPORTATION  
TECHNICAL SERVICES DIVISION  
IN COOPERATION WITH THE  
U.S. DEPARTMENT OF TRANSPORTATION  
FEDERAL HIGHWAY ADMINISTRATION



1999  
BASIC DATA - 1977



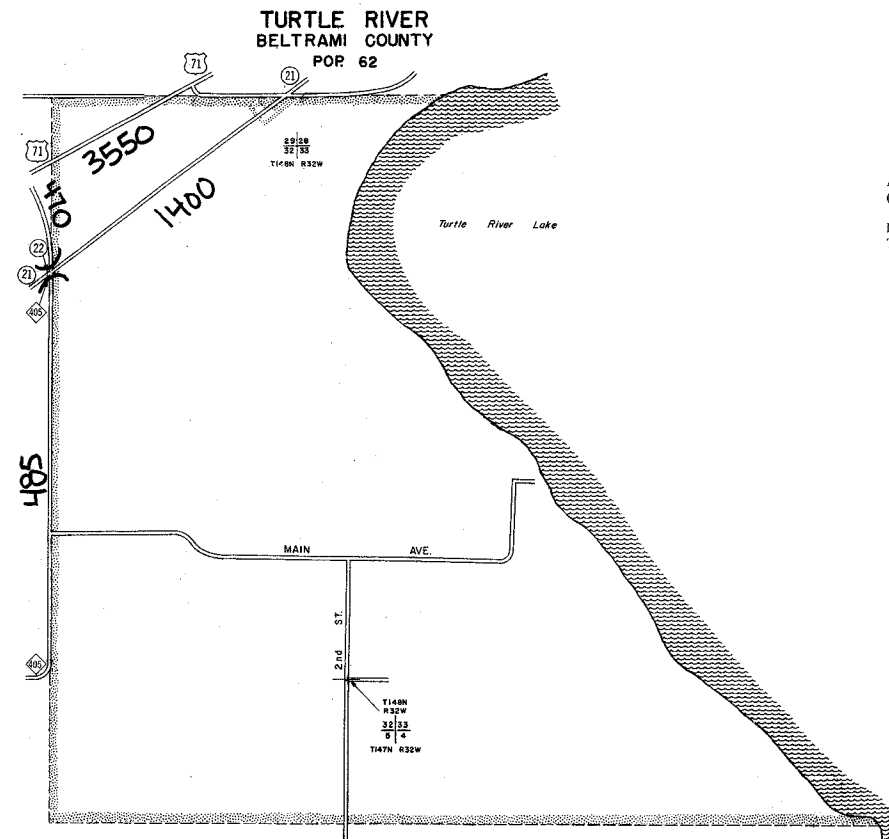
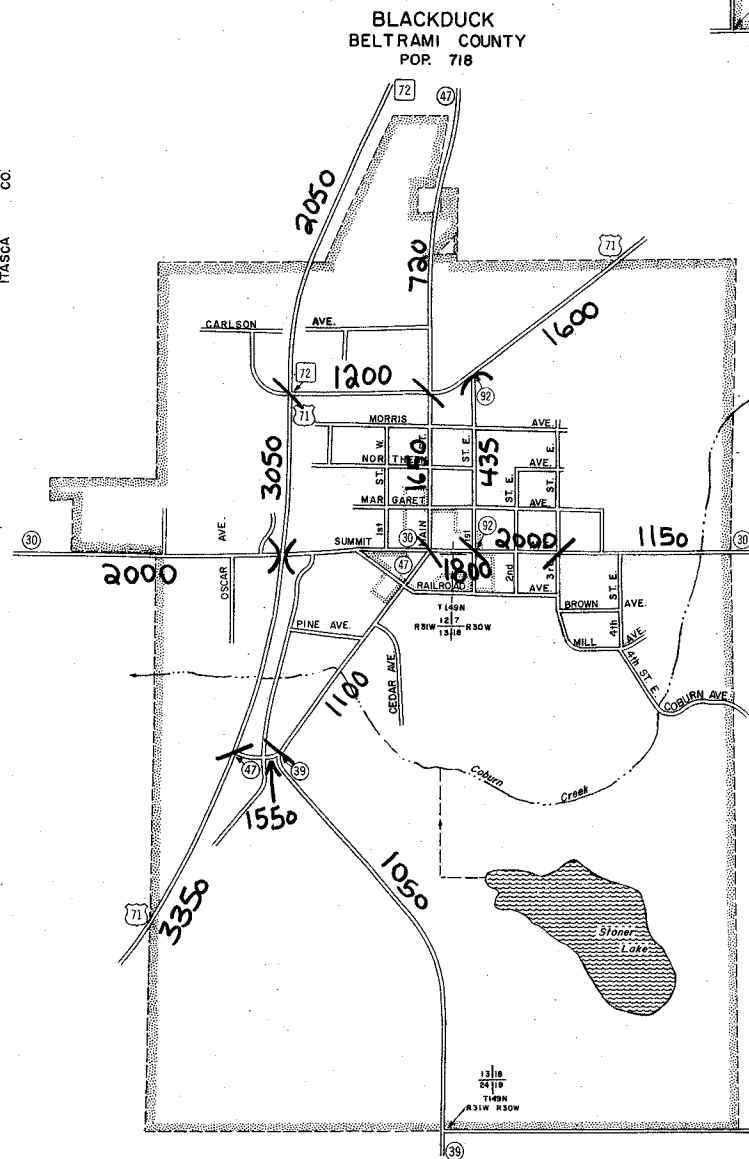
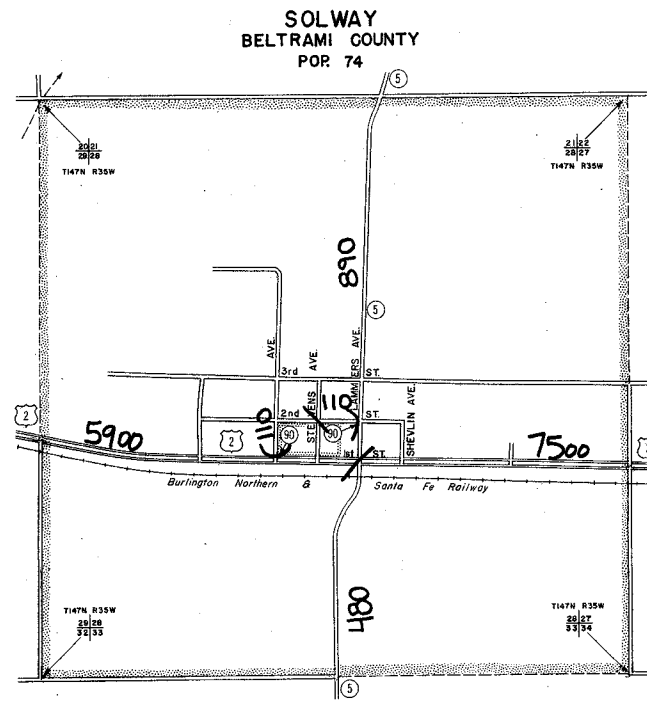
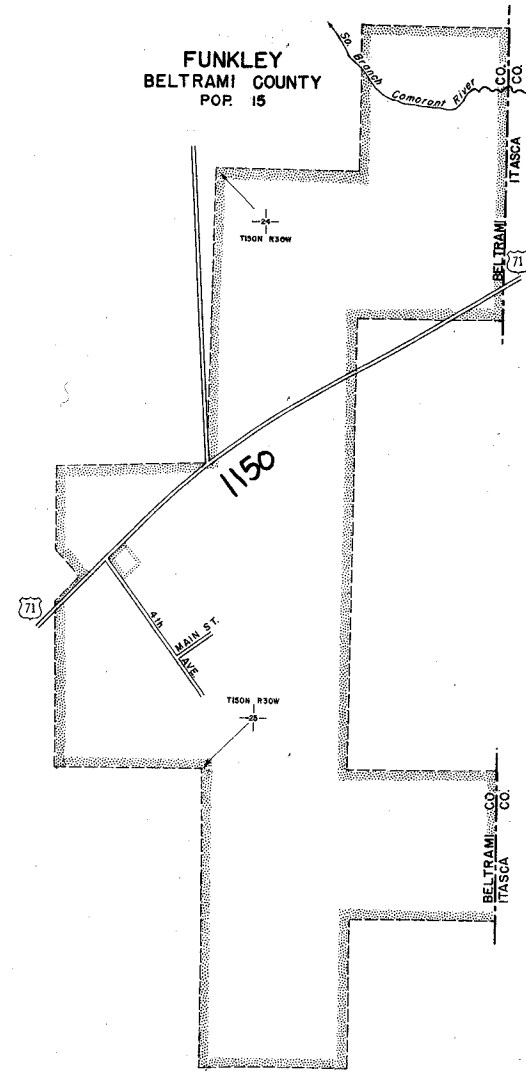
**LEGEND**

- INTERSTATE TRUNK HIGHWAY..... (35)
- U.S. NUMBERED TRUNK HIGHWAY..... (10)
- STATE NUMBERED TRUNK HIGHWAY..... (5)
- COUNTY STATE AID HIGHWAY..... (3)
- COUNTY ROAD..... (7)
- COUNTY STATE AID HIGHWAY IN ADJOINING COUNTY..... (2)
- COUNTY ROAD IN ADJOINING COUNTY..... (1)
- CORPORATE LIMITS.....
- CENTRAL BUSINESS DISTRICT BOUNDARY.....

VOLUMES PREPARED BY  
THE OFFICE OF  
TRANSPORTATION DATA & ANALYSIS

FOR DESIGNATED ROADS:  
/ = SEGMENT ENDPOINT FOR ALL ROADS INTERSECTED BY HATCH  
( = SEGMENT ENDPOINT ONLY FOR ROAD SEPARATED FROM INTERSECTING ROAD BY ARC

A.A.D.T. .... 2500  
(ANNUAL AVERAGE DAILY TRAFFIC)  
NUMERALS INDICATE ANNUAL AVERAGE DAILY TRAFFIC VOLUMES ON DESIGNATED ROADWAYS



- MUNICIPALITIES SHOWN ON THIS SHEET
- BLACKDUCK
  - FUNKLEY
  - SOLWAY
  - TURTLE RIVER

NOTE: U.S. CENSUS FIGURES SHOWN FOR ALL MUNICIPALITIES UNLESS OTHERWISE STATED.