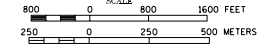


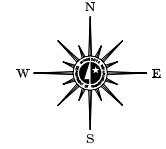
2002 TRAFFIC VOLUMES

MUNICIPALITIES OF
NOBLES CO.

PREPARED BY THE
MINNESOTA DEPARTMENT OF TRANSPORTATION
PROGRAM SUPPORT GROUP
IN COOPERATION WITH
U.S. DEPARTMENT OF TRANSPORTATION
FEDERAL HIGHWAY ADMINISTRATION



2002
BASIC DATA - 1977



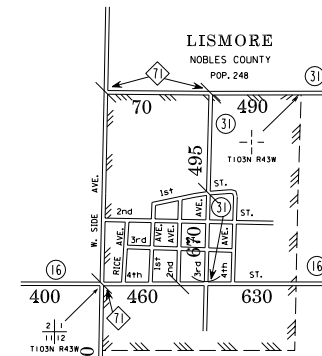
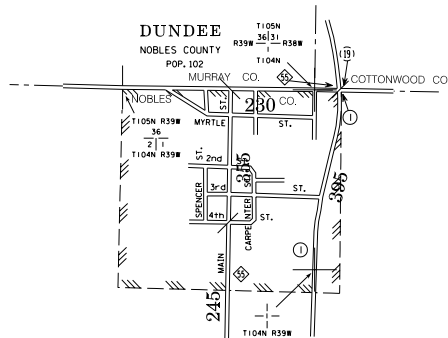
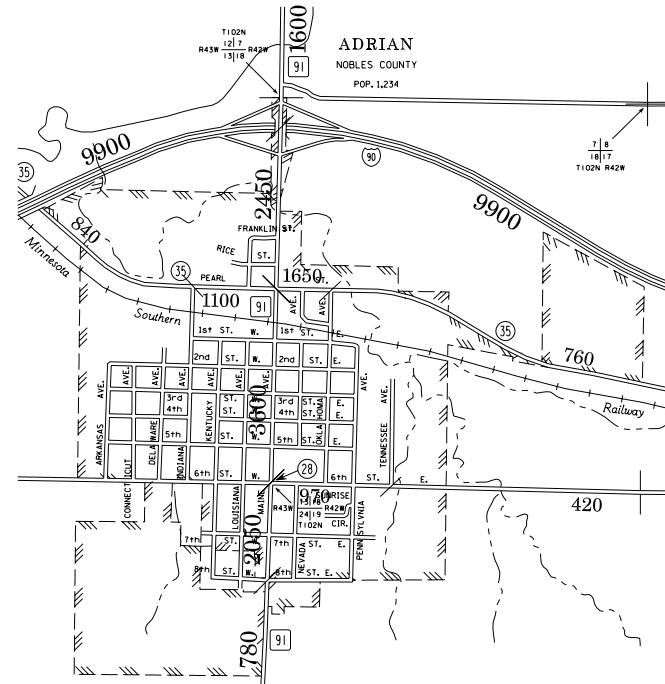
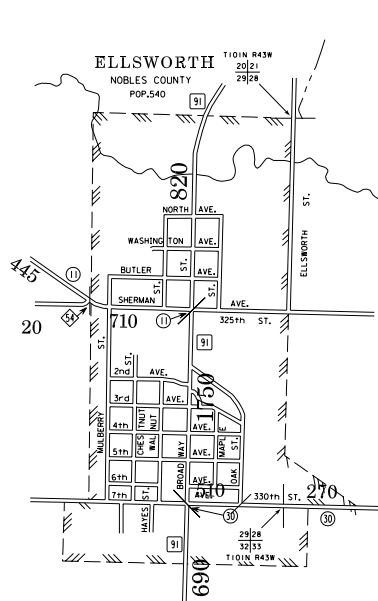
LEGEND

- INTERSTATE TRUNK HIGHWAY.....(35)
- U.S. TRUNK HIGHWAY.....(91)
- STATE TRUNK HIGHWAY.....(35)
- COUNTY STATE AID HIGHWAY.....(28)
- COUNTY ROAD.....(16)
- PUBLIC ROAD.....(16)
- PRIVATE ROAD.....(16)
- CORPORATE LIMITS.....

VOLUMES PREPARED BY
THE OFFICE OF
TRANSPORTATION DATA & ANALYSIS

NUMERALS INDICATE AVERAGE DAILY
TRAFFIC VOLUMES ON DESIGNATED ROADS
NOTE: T.H. ROUTES ARE 2002 A.A.D.T. VOLUMES

FOR DESIGNATED ROADS :
/ = SEGMENT ENDPOINT FOR ALL
ROADS INTERSECTED BY HATCH
(= SEGMENT ENDPOINT ONLY FOR
ROAD SEPARATED FROM INTERSECTING
ROAD BY ARC



- MUNICIPALITIES SHOWN
ON THIS SHEET
- ADRIAN
 - DUNDEE
 - ELLSWORTH
 - LISMORE
 - RUSHMORE

NOTE: 2000 U.S. CENSUS FIGURES SHOWN FOR ALL MUNICIPALITIES UNLESS OTHERWISE STATED.