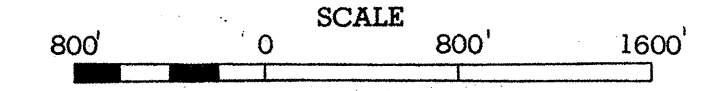


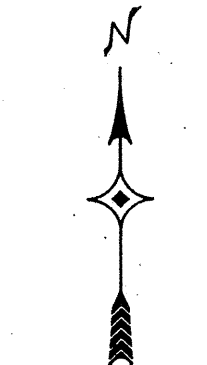
2002 TRAFFIC VOLUMES

MUNICIPALITIES OF  
**MARSHALL CO.**

PREPARED BY THE  
MINNESOTA DEPARTMENT OF TRANSPORTATION  
TECHNICAL SERVICES DIVISION  
IN COOPERATION WITH THE  
U.S. DEPARTMENT OF TRANSPORTATION  
FEDERAL HIGHWAY ADMINISTRATION

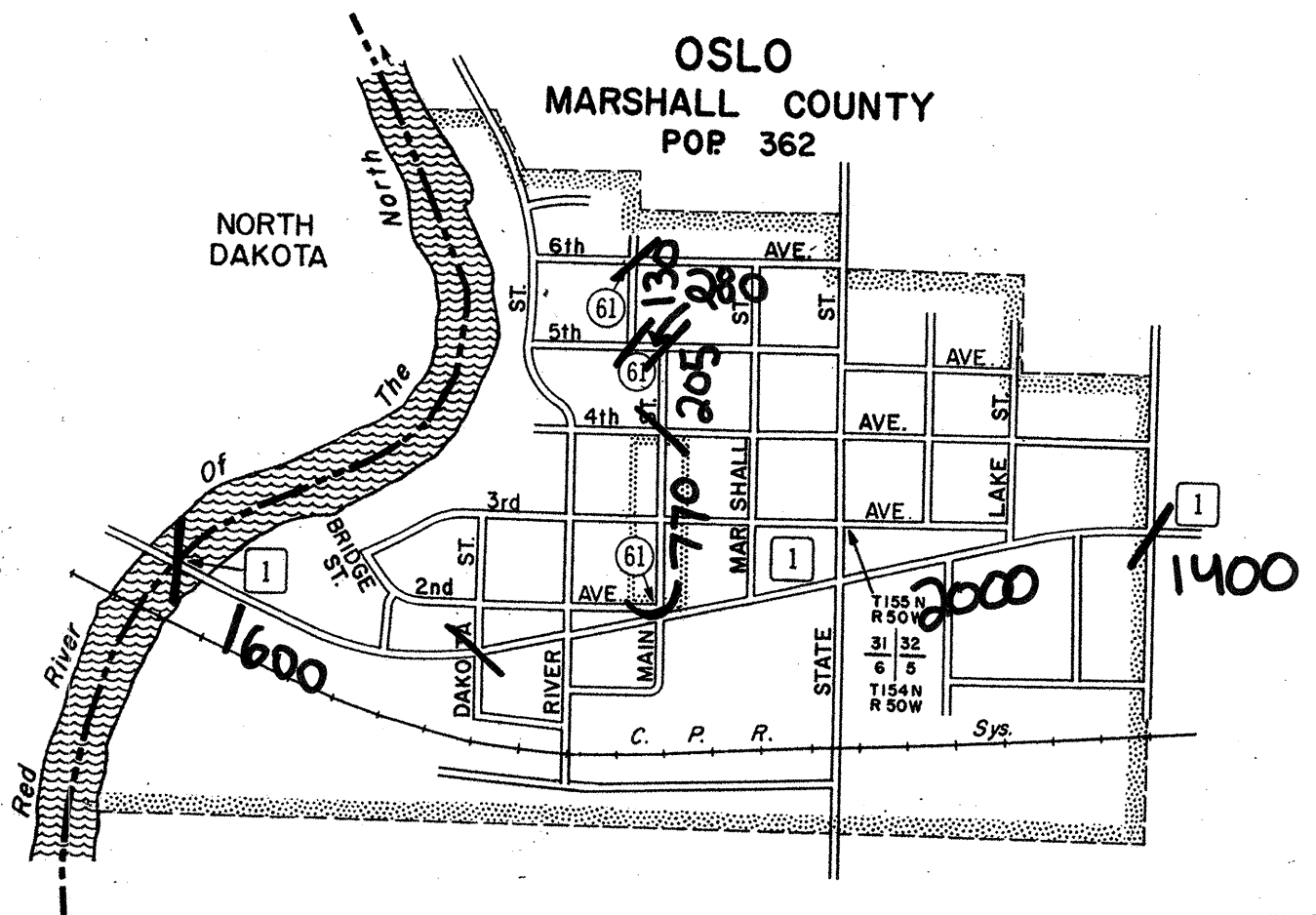
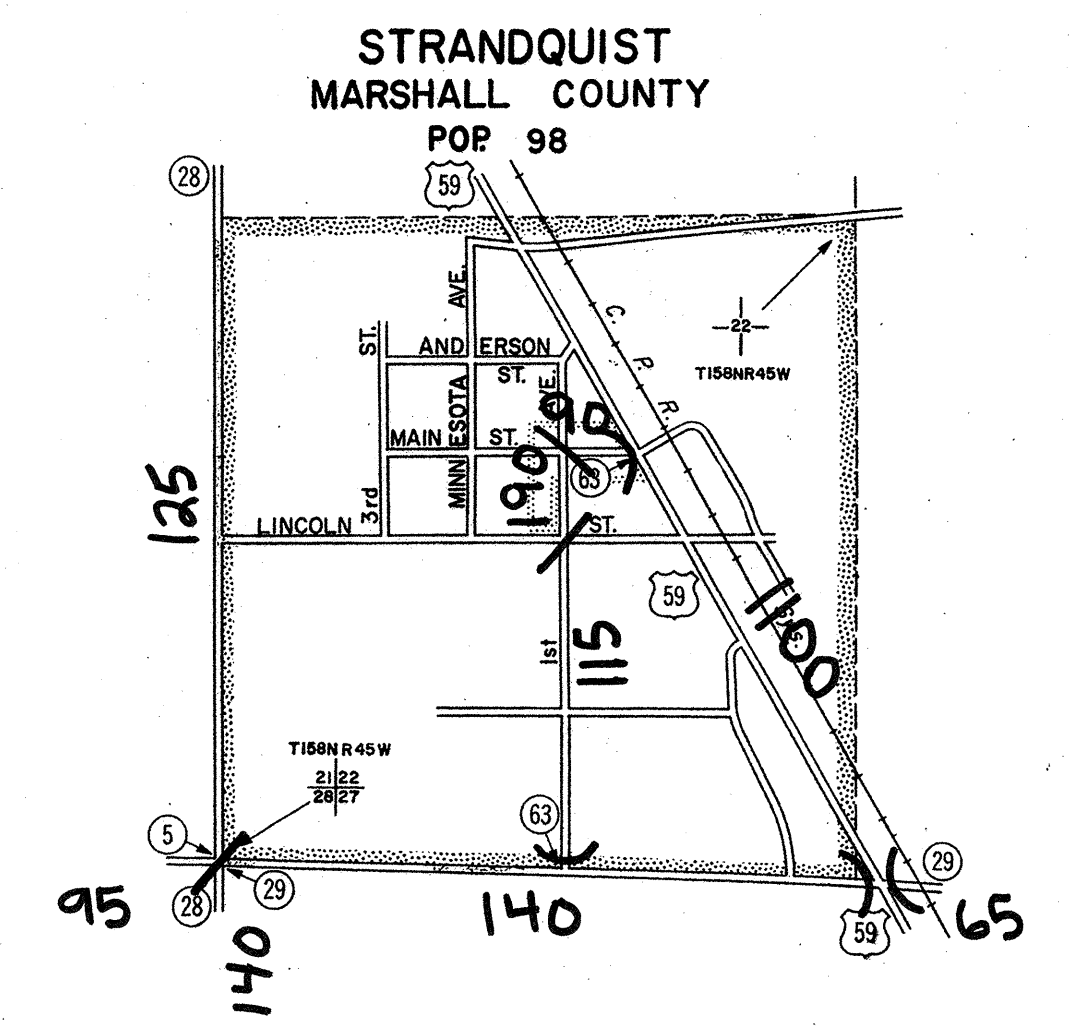
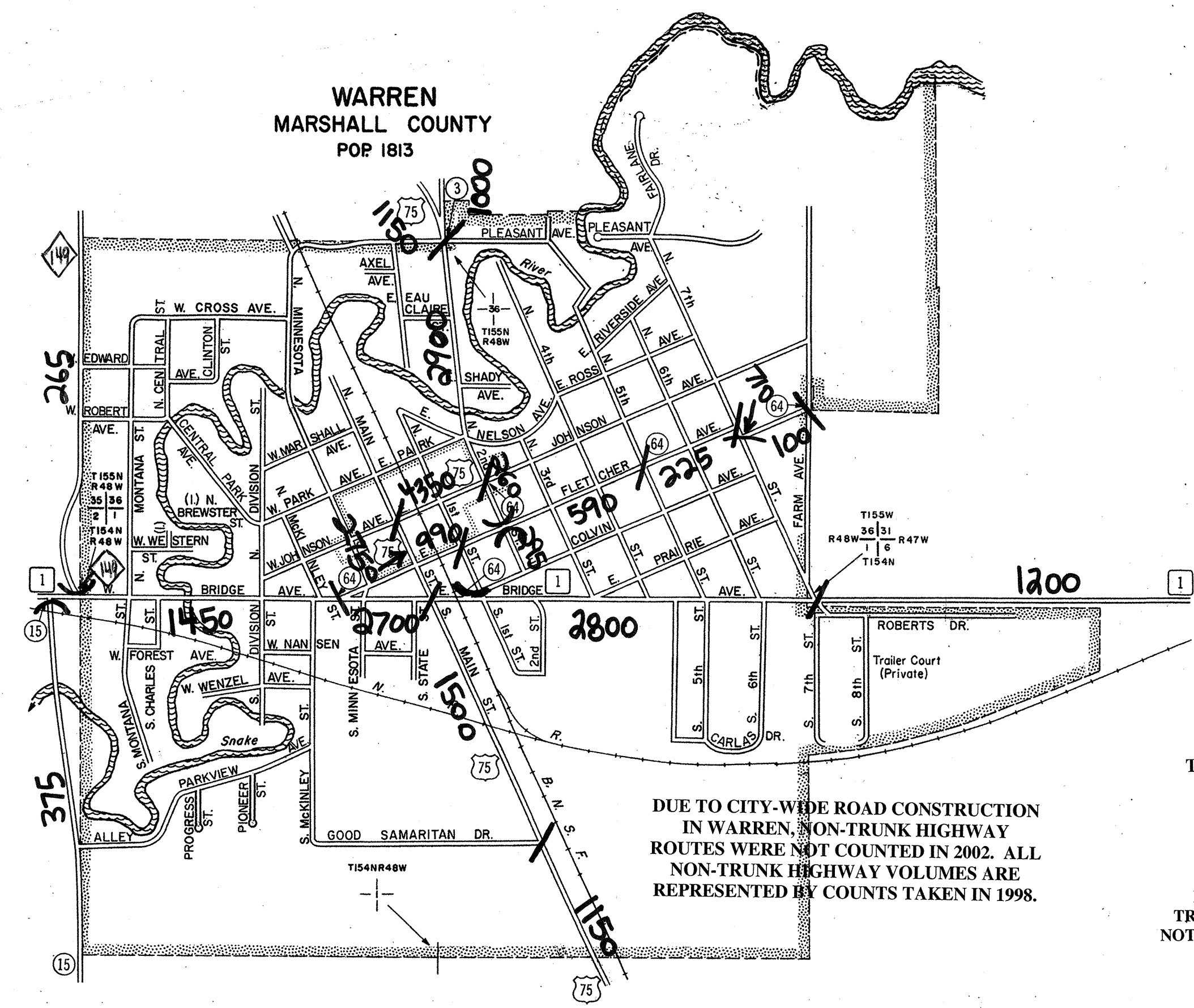
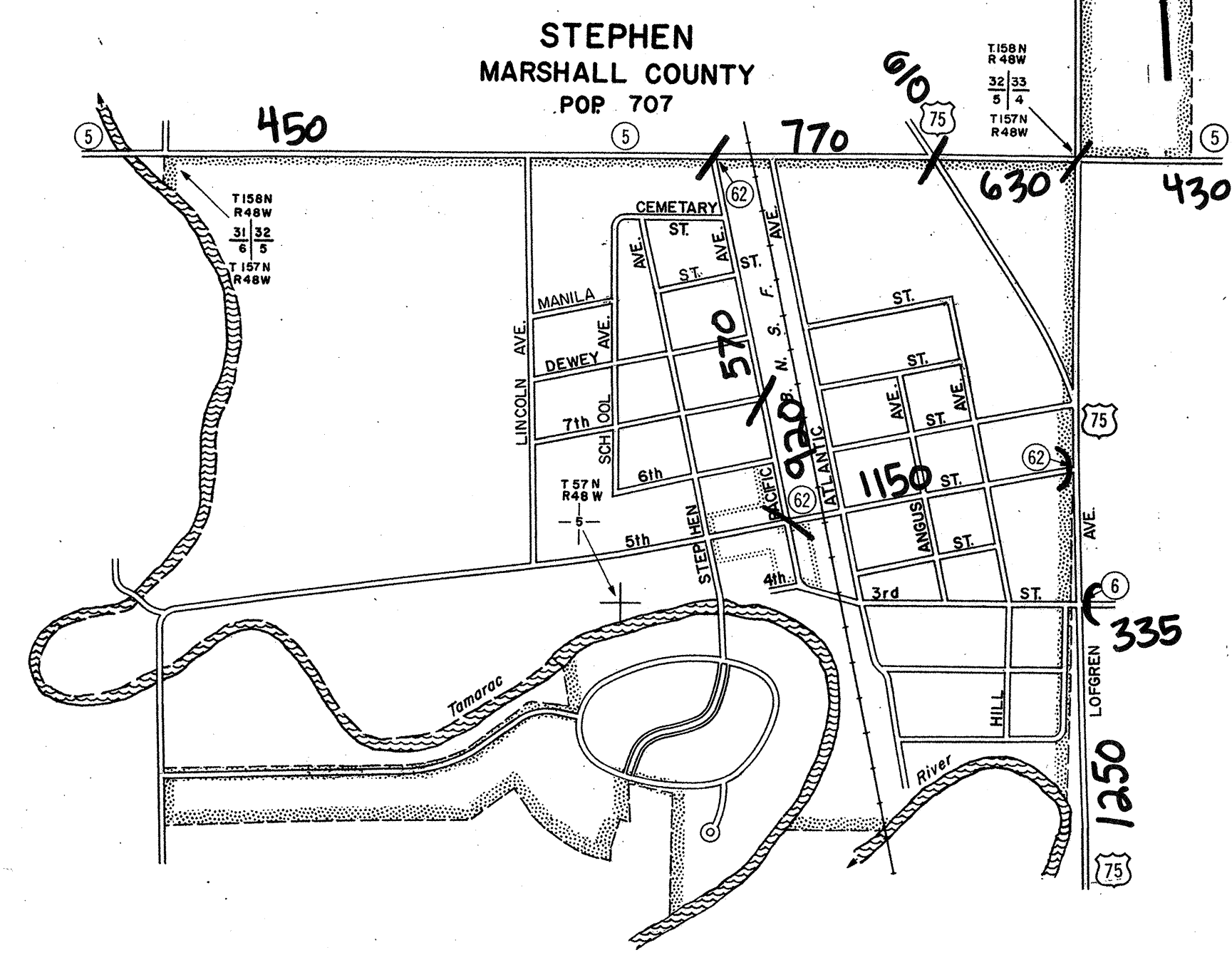
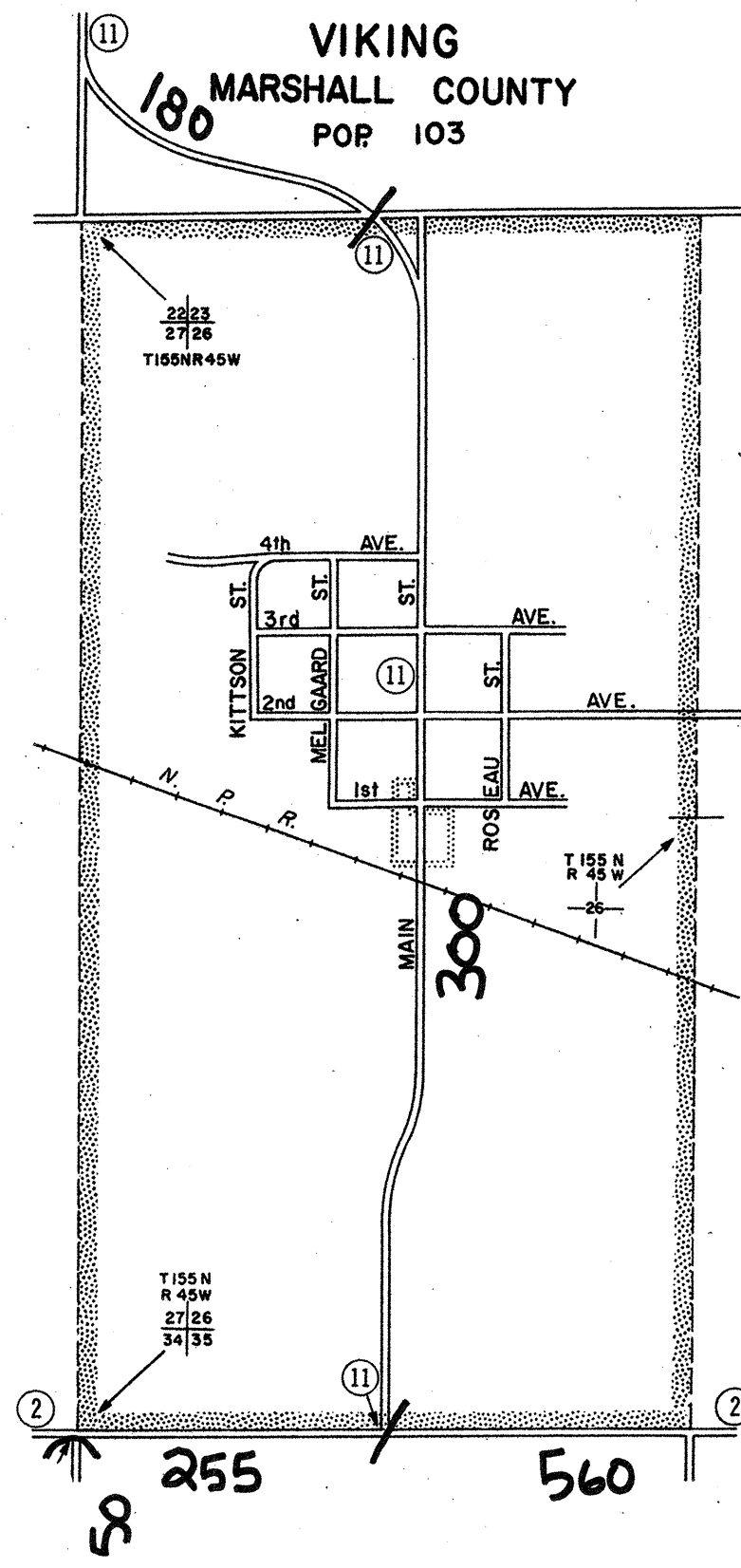


2000  
BASIC DATA-1975



LEGEND

- INTERSTATE TRUNK HIGHWAY (35)
- U.S. NUMBERED TRUNK HIGHWAY (10) (6)
- STATE NUMBERED TRUNK HIGHWAY (3) (2)
- COUNTY STATE AID HIGHWAY (3) (2)
- COUNTY ROAD (1) (2)
- COUNTY STATE AID HIGHWAY IN ADJOINING COUNTY (2)
- COUNTY ROAD IN ADJOINING COUNTY (2)
- CORPORATE LIMITS (1)
- CENTRAL BUSINESS DISTRICT BOUNDARY (1)



DUE TO CITY-WIDE ROAD CONSTRUCTION  
IN WARREN, NON-TRUNK HIGHWAY  
ROUTES WERE NOT COUNTED IN 2002. ALL  
NON-TRUNK HIGHWAY VOLUMES ARE  
REPRESENTED BY COUNTS TAKEN IN 1998.

VOLUMES PREPARED BY  
THE OFFICE OF  
TRANSPORTATION DATA & ANALYSIS

NUMERALS INDICATE AVERAGE DAILY  
TRAFFIC VOLUMES ON DESIGNATED ROADS  
NOTE: T.H. ROUTES ARE 2002 A.A.D.T. VOLUMES

FOR DESIGNATED ROADS:  
/ = SEGMENT ENDPOINT FOR ALL ROADS  
INTERSECTED BY HATCH  
( = SEGMENT ENDPOINT ONLY FOR ROAD  
SEPARATED FROM INTERSECTING  
ROAD BY ARC

MUNICIPALITIES SHOWN  
ON THIS SHEET  
OSLO  
STEPHEN  
STRANDQUIST  
VIKING  
WARREN

U.S. CENSUS FIGURES SHOWN FOR ALL MUNICIPALITIES UNLESS OTHERWISE STATED.