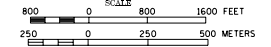


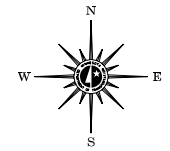
2002 TRAFFIC VOLUMES

MUNICIPALITIES OF
KANDIYOHI CO.

PREPARED BY THE
MINNESOTA DEPARTMENT OF TRANSPORTATION
PROGRAM SUPPORT GROUP
IN COOPERATION WITH
U.S. DEPARTMENT OF TRANSPORTATION
FEDERAL HIGHWAY ADMINISTRATION



2002
BASIC DATA - 1977



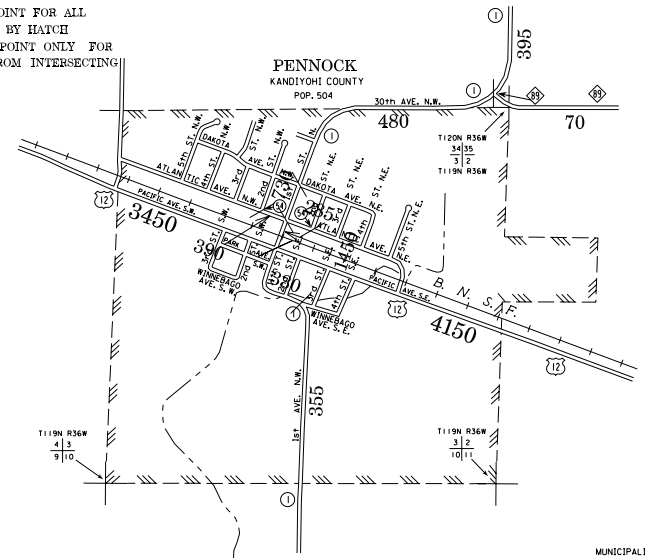
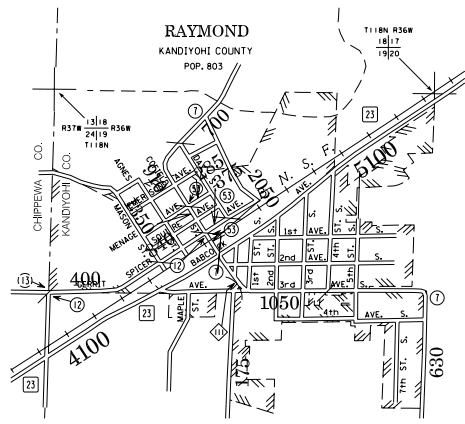
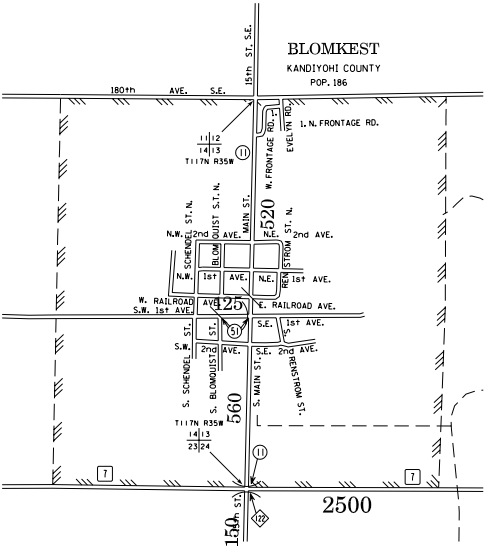
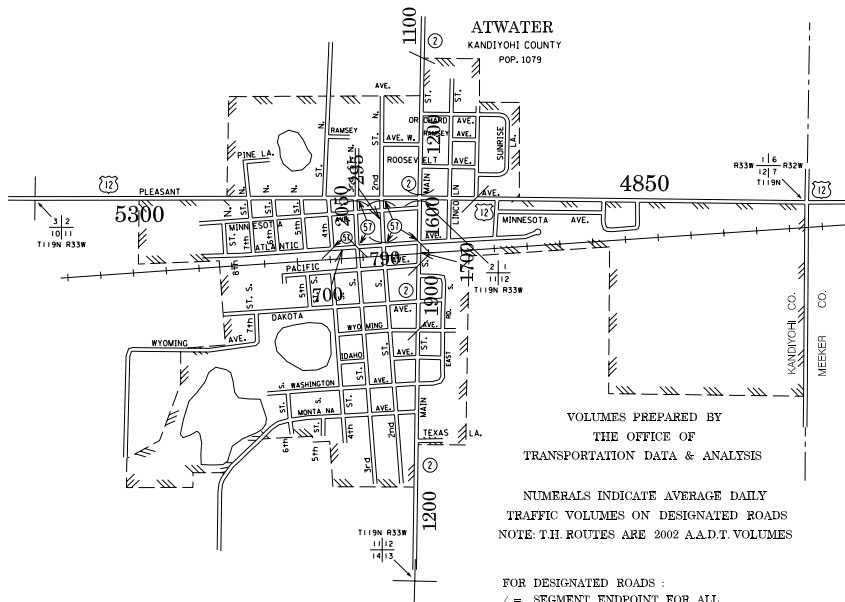
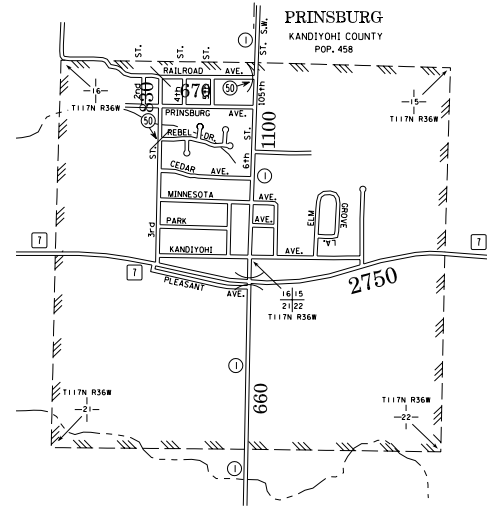
LEGEND

- INTERSTATE TRUNK HIGHWAY.....(I)
- U.S. TRUNK HIGHWAY.....(U.S.)
- STATE TRUNK HIGHWAY.....(S.T.H.)
- COUNTY STATE AID HIGHWAY.....(C.S.A.H.)
- COUNTY ROAD.....(C.R.)
- PUBLIC ROAD.....(P.R.)
- PRIVATE ROAD.....(P.R.)
- CORPORATE LIMITS.....(---)

VOLUMES PREPARED BY
THE OFFICE OF
TRANSPORTATION DATA & ANALYSIS

NUMERALS INDICATE AVERAGE DAILY
TRAFFIC VOLUMES ON DESIGNATED ROADS
NOTE: T.H. ROUTES ARE 2002 A.A.D.T. VOLUMES

FOR DESIGNATED ROADS :
/ = SEGMENT ENDPOINT FOR ALL
ROADS INTERSECTED BY HATCH
(= SEGMENT ENDPOINT ONLY FOR
ROAD SEPARATED FROM INTERSECTING
ROAD BY ARC



- MUNICIPALITIES SHOWN
ON THIS SHEET
- ATWATER
 - BLOMKEST
 - PENNOCK
 - PRINSBURG
 - RAYMOND

NOTE: 2000 U.S. CENSUS FIGURES SHOWN FOR ALL MUNICIPALITIES UNLESS OTHERWISE STATED.