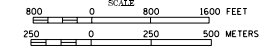


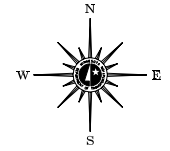
2002 TRAFFIC VOLUMES

MUNICIPALITY OF
STEWARTVILLE

PREPARED BY THE
MINNESOTA DEPARTMENT OF TRANSPORTATION
PROGRAM SUPPORT GROUP
IN COOPERATION WITH
U.S. DEPARTMENT OF TRANSPORTATION
FEDERAL HIGHWAY ADMINISTRATION



2002
BASIC DATA - 1978



LEGEND

- INTERSTATE TRUNK HIGHWAY.....(5)
- U.S. TRUNK HIGHWAY.....(30)
- STATE TRUNK HIGHWAY.....(67)
- COUNTY STATE AID HIGHWAY.....(2)
- COUNTY ROAD.....(10)
- CORPORATE LIMITS.....(M)
- PUBLIC ROAD.....(—)
- PRIVATE ROAD.....(—)

**MUNICIPAL STATE AID
STREET SYSTEM**

LEGEND

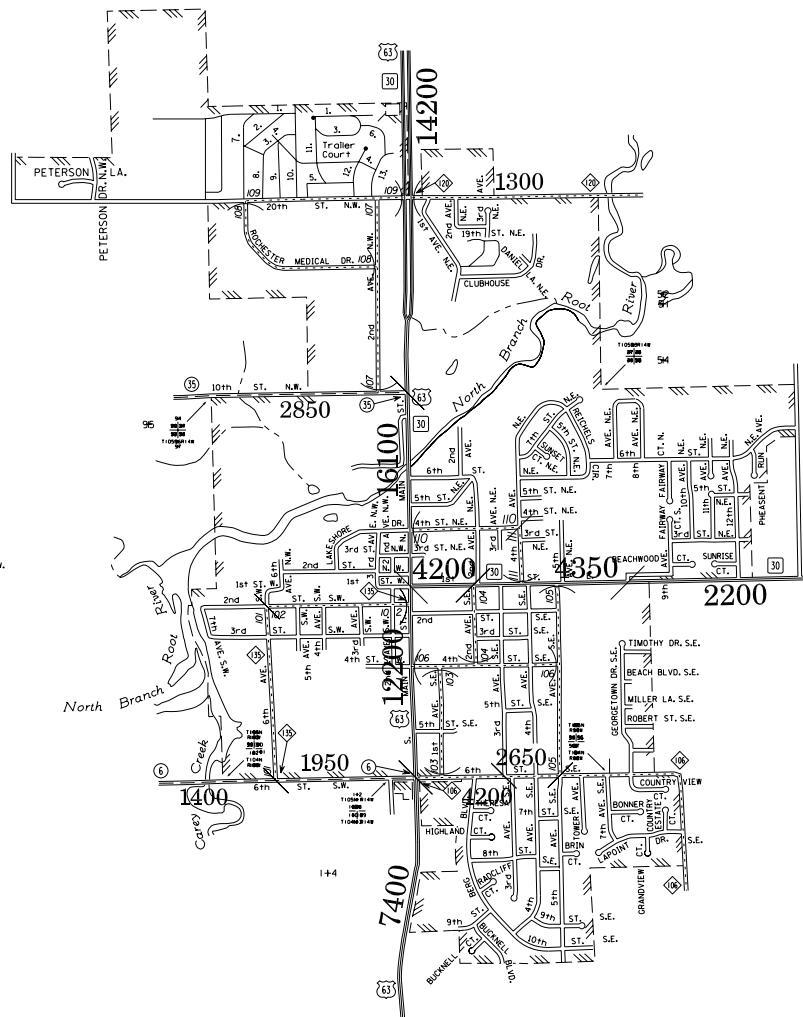
- MUNICIPAL COUNTY STATE AID STREET.....(—)
- MUNICIPAL STATE AID STREET.....(—)
- COUNTY STATE AID HIGHWAY.....(—)
- COUNTY ROAD.....(—)
- TRUNK HIGHWAY.....(—)

VOLUMES PREPARED BY
THE OFFICE OF
TRANSPORTATION DATA & ANALYSIS

NUMERALS INDICATE AVERAGE DAILY
TRAFFIC VOLUMES ON DESIGNATED ROADS
NOTE: I.H. ROUTES ARE 2002 A.A.D.T. VOLUMES

FOR DESIGNATED ROADS:
/ = SEGMENT ENDPOINT FOR ALL
ROADS INTERSECTED BY HATCH
(= SEGMENT ENDPOINT ONLY FOR
ROAD SEPARATED FROM INTERSECTING
ROAD BY ARC

1. 23rd ST. N.W.
2. 22nd ST. N.W.
3. 22nd ST. N.W.
4. 21st ST. N.W.
5. 20th ST. N.W.
6. 23rd ST. N.W.
7. LARK LA. N.W.
8. HURON DR. N.W.
9. GULL LA. N.W.
10. FALCON TERR. N.W.
11. EAGLE DR. N.W.
12. CARDINAL DR. N.W.
13. BLUE BIRD TERR. N.W.



2002 TRAFFIC VOLUMES ARE NOT AVAILABLE FOR MSAS ROUTES