

2001 TRAFFIC VOLUMES
MUNICIPALITIES OF
YELLOW MEDICINE CO.

PREPARED BY THE
MINNESOTA DEPARTMENT OF TRANSPORTATION
TECHNICAL SERVICES DIVISION
IN COOPERATION WITH THE
U.S. DEPARTMENT OF TRANSPORTATION
FEDERAL HIGHWAY ADMINISTRATION

SCALE 800' 1600'

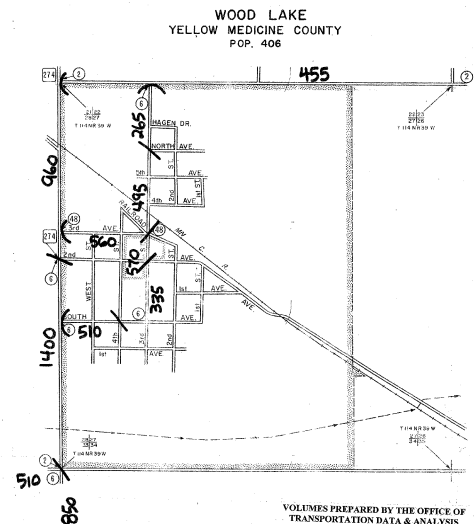
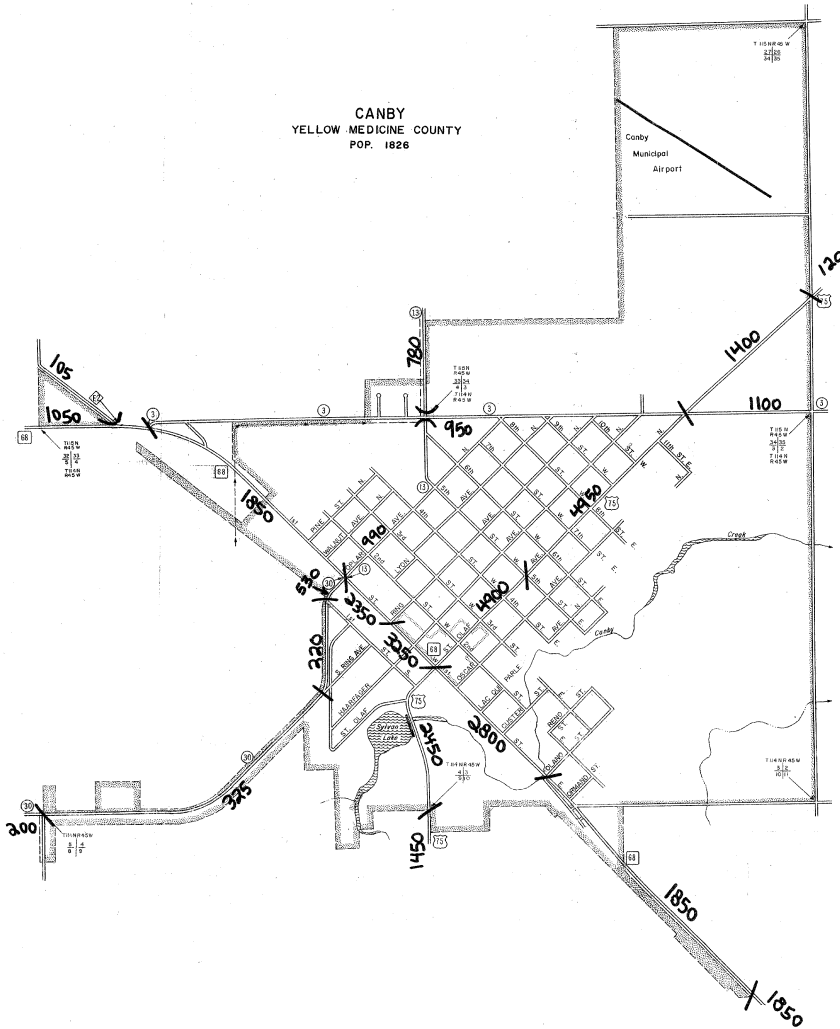
1999

BASIC DATA 9977



LEGEND

- INTERSTATE TRUNK HIGHWAY (5)
- U.S. NUMBERED TRUNK HIGHWAY (10)
- STATE NUMBERED TRUNK HIGHWAY (1)
- COUNTY STATE AID HIGHWAY (3)
- COUNTY STATE AID HIGHWAY IN ADJOINING COUNTY (2)
- COUNTY ROAD IN ADJOINING COUNTY (1)
- CONTRACTOR BUILT (1)
- CENTRAL BUSINESS DISTRICT BOUNDARY



VOLUMES PREPARED BY THE OFFICE OF
TRANSPORTATION DATA & ANALYSIS

A.A.D.T. 2500
(ANNUAL AVERAGE DAILY TRAFFIC)
NUMERALS INDICATE ANNUAL AVERAGE DAILY
TRAFFIC VOLUMES ON DESIGNATED ROADWAYS

MUNICIPALITIES SHOWN
ON THIS SHEET
CANBY
WOOD LAKE

NOTE: 1999 U.S. CENSUS FIGURES SHOWN FOR ALL MUNICIPALITIES UNLESS OTHERWISE STATED.