

2001 TRAFFIC VOLUMES
MUNICIPALITIES OF
TRAVERSE CO.

PREPARED BY THE
MINNESOTA DEPARTMENT OF TRANSPORTATION
TECHNICAL SERVICES DIVISION
IN COOPERATION WITH THE
U.S. DEPARTMENT OF TRANSPORTATION
FEDERAL HIGHWAY ADMINISTRATION

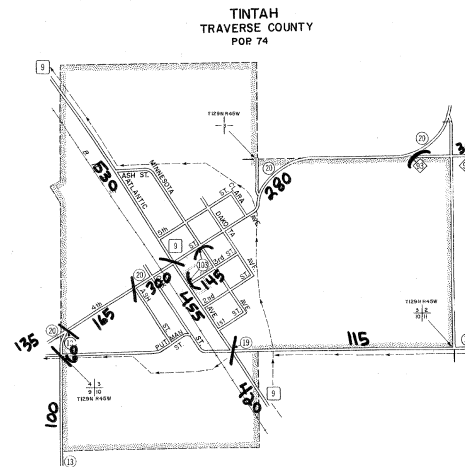
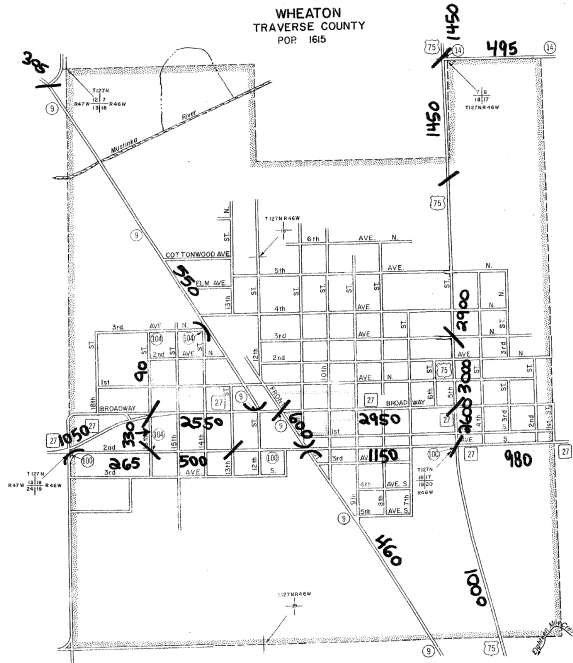
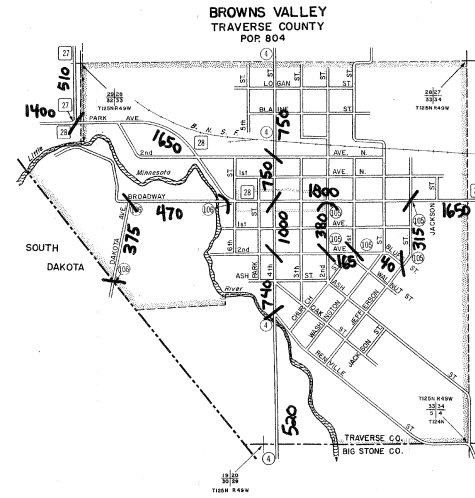
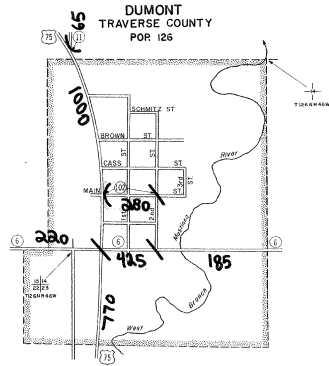
SCALE 800' 0 800' 1600'

2000
BASIC DATA 1977



LEGEND

- INTERSTATE TRUNK HIGHWAY
- U.S. NUMBERED TRUNK HIGHWAY
- STATE NUMBERED TRUNK HIGHWAY
- COUNTY STATE AID HIGHWAY
- COUNTY ROAD
- COUNTY STATE AID HIGHWAY IN ADJACENT COUNTY
- COUNTY ROAD IN ADJACENT COUNTY
- CORPORATE LIMITS
- CENTRAL BUSINESS DISTRICT BOUNDARY



VOLUMES PREPARED BY THE OFFICE OF
TRANSPORTATION DATA & ANALYSIS

A.A.D.T. 2500
(ANNUAL AVERAGE DAILY TRAFFIC)
NUMERALS INDICATE ANNUAL AVERAGE DAILY
TRAFFIC VOLUMES ON DESIGNATED ROADWAYS

MUNICIPALITIES SHOWN
ON THIS SHEET
BROWNS VALLEY
DUMONT
TINTAH
WHEATON

U.S. CENSUS FIGURES SHOWN FOR ALL MUNICIPALITIES AND STATEWIDE STATES.