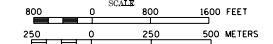


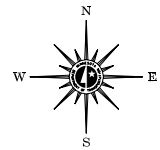
2001 TRAFFIC VOLUMES

MUNICIPALITIES OF  
**RICE CO.**

PREPARED BY THE  
MINNESOTA DEPARTMENT OF TRANSPORTATION  
PROGRAM SUPPORT GROUP  
IN COOPERATION WITH  
U.S. DEPARTMENT OF TRANSPORTATION  
FEDERAL HIGHWAY ADMINISTRATION

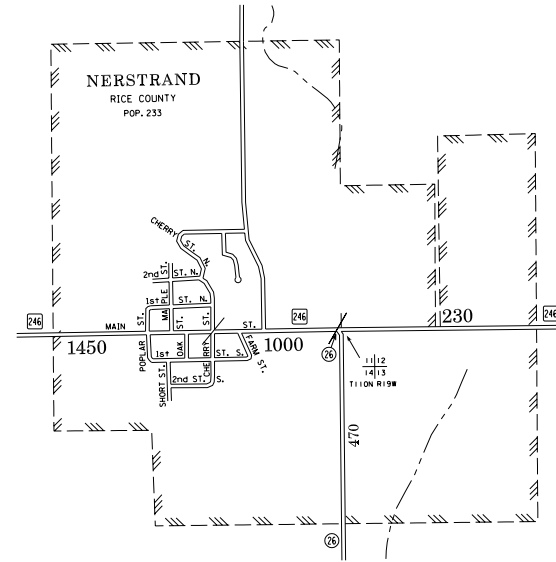
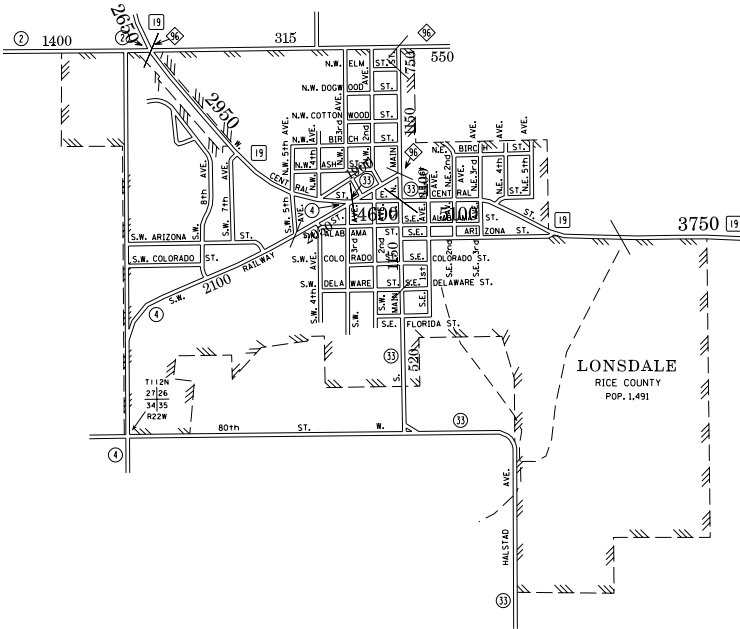


2002  
BASIC DATA - 1978

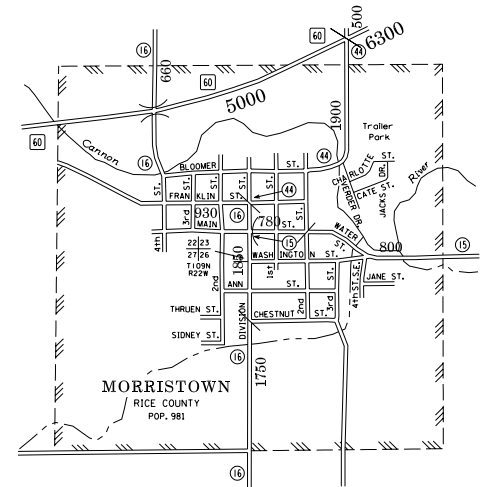
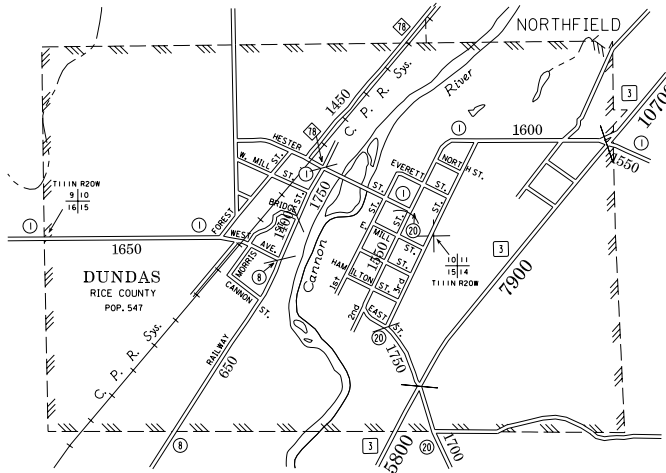
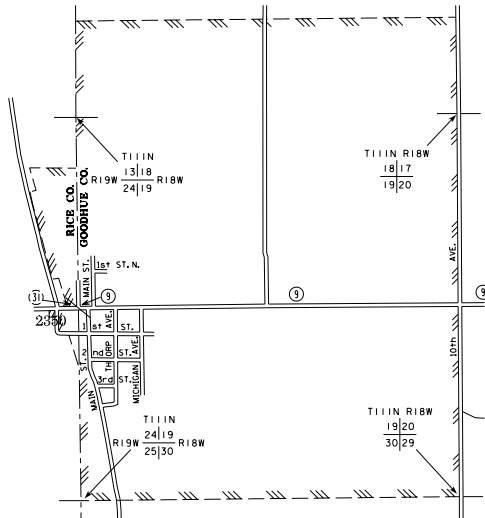


LEGEND

- INTERSTATE TRUNK HIGHWAY.....(I)
- U.S. TRUNK HIGHWAY.....(U)
- STATE TRUNK HIGHWAY.....(S)
- COUNTY STATE AID HIGHWAY.....(CS)
- COUNTY ROAD.....(C)
- PUBLIC ROAD.....(P)
- PRIVATE ROAD.....(PR)
- CORPORATE LIMITS.....(H)



DENNISON  
RICE AND GOODHUE COUNTIES  
POP. 168



VOLUMES PREPARED BY  
THE OFFICE OF  
TRANSPORTATION DATA & ANALYSIS

NUMERALS INDICATE AVERAGE DAILY  
TRAFFIC VOLUMES ON DESIGNATED ROADS  
NOTE: T.H. ROUTES ARE 2000 A.A.D.T. VOLUMES

FOR DESIGNATED ROADS :  
- SEGMENT ENDPOINT FOR ALL  
ROADS INTERSECTED BY HATCH  
( = SEGMENT ENDPOINT ONLY FOR  
ROAD SEPARATED FROM INTERSECTING  
ROAD BY ARC

MUNICIPALITIES SHOWN  
ON THIS SHEET  
DENNISON  
DUNDAS  
LONSDALE  
MORRISTOWN  
NERSTRAND