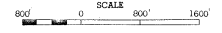


2001 TRAFFIC VOLUMES
MUNICIPALITIES OF
MURRAY CO.

PREPARED BY THE
MINNESOTA DEPARTMENT OF TRANSPORTATION
TECHNICAL SERVICES DIVISION
IN COOPERATION WITH THE
U.S. DEPARTMENT OF TRANSPORTATION
FEDERAL HIGHWAY ADMINISTRATION



2000
BASIC DATA, 1990

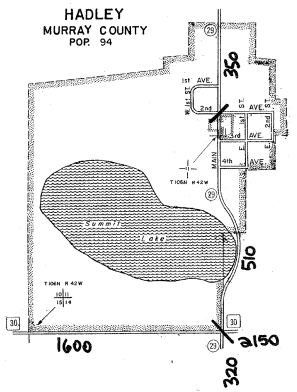
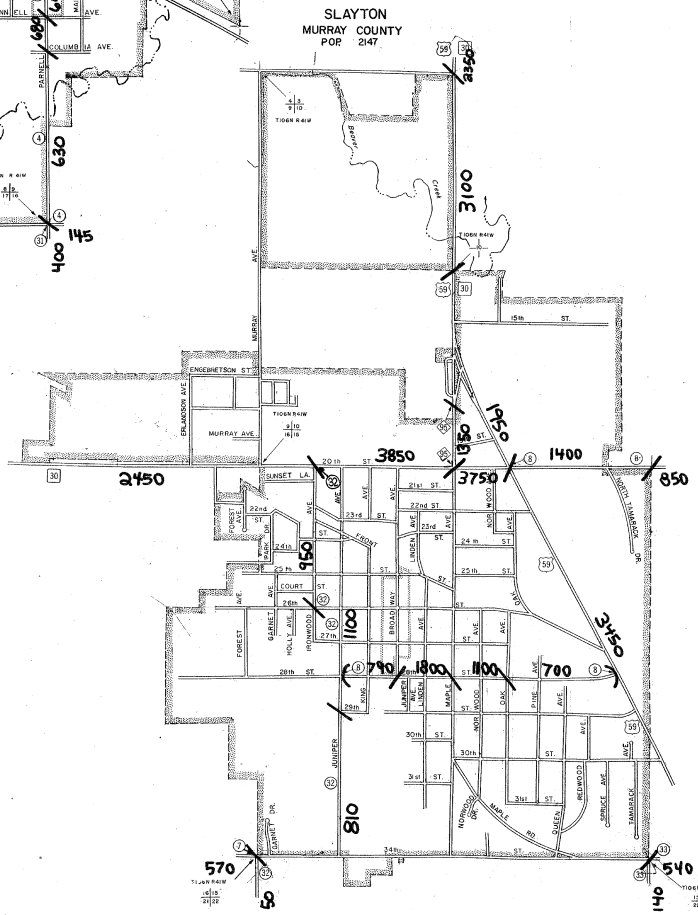
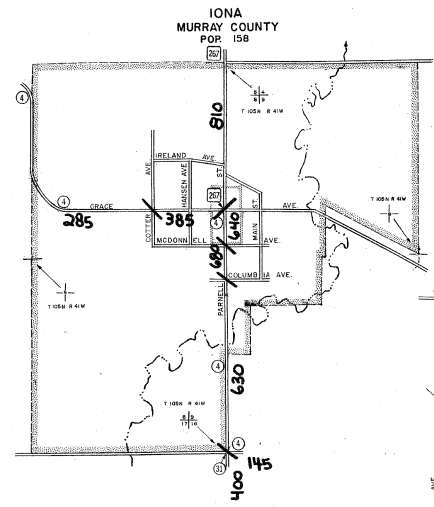
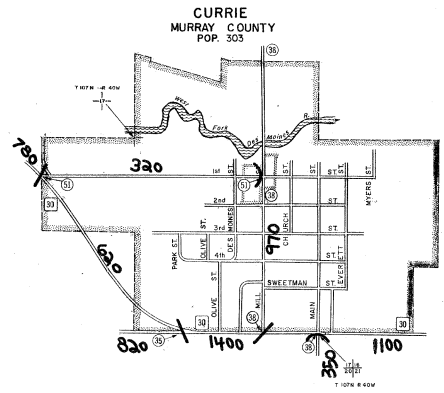
LEGEND

- INTERSTATE TRUNK HIGHWAY.....(5)
- U.S. NUMBERED TRUNK HIGHWAY.....(10)
- STATE NUMBERED TRUNK HIGHWAY.....(6)
- COUNTY STATE AID HIGHWAY.....(4)
- COUNTY ROAD.....(1)
- COUNTY STATE AID HIGHWAY IN ADJACENT COUNTY.....(2)
- COUNTY ROAD IN ADJACENT COUNTY.....(3)
- CORPORATE LIMITS.....(7)
- CENTRAL BUSINESS DISTRICT BOUNDARY.....(8)

VOLUMES PREPARED BY THE OFFICE OF
TRANSPORTATION DATA & ANALYSIS

A.A.D.T. (ANNUAL AVERAGE DAILY TRAFFIC).....2500
NUMERALS INDICATE ANNUAL AVERAGE DAILY
TRAFFIC VOLUMES ON DESIGNATED ROADWAYS

MUNICIPALITIES SHOWN
ON THIS SHEET
CURRIE
HADLEY
IONA
SLAYTON



U.S. CENSUS FIGURES SHOWN FOR ALL MUNICIPALITIES UNLESS OTHERWISE STATED.