

2001 TRAFFIC VOLUMES

MUNICIPALITIES OF
LYON CO.

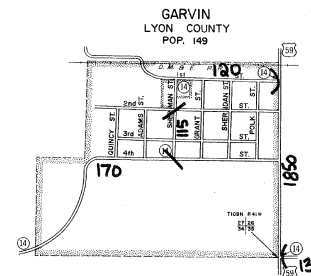
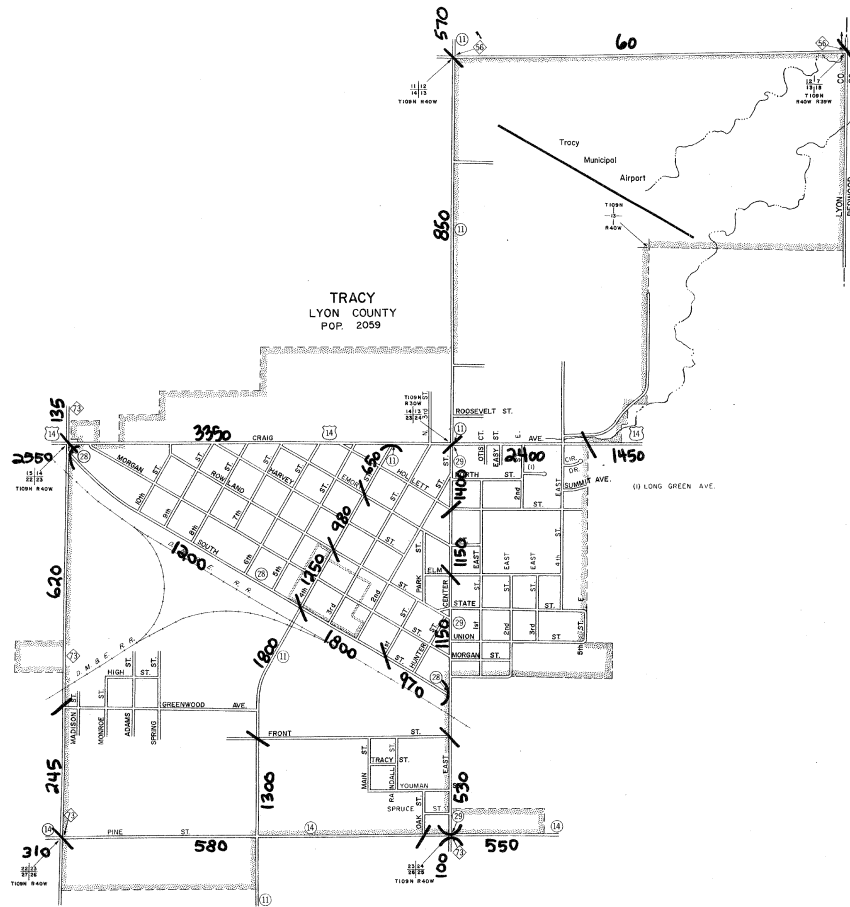
PREPARED BY THE
MINNESOTA DEPARTMENT OF TRANSPORTATION
TECHNICAL SERVICES DIVISION
IN COOPERATION WITH THE
U.S. DEPARTMENT OF TRANSPORTATION
FEDERAL HIGHWAY ADMINISTRATION

SCALE 0 600' 1200'

1999
BASIC DATA 1977

LEGEND

- INTERSTATE TRUNK HIGHWAY.....(I)
- U.S. NUMBERED TRUNK HIGHWAY.....(U)
- STATE NUMBERED TRUNK HIGHWAY.....(S)
- COUNTY STATE AID HIGHWAY.....(A)
- COUNTY ROAD.....(C)
- COUNTY STATE AID HIGHWAY IN ADJACENT COUNTY.....(A)
- COUNTY ROAD IN ADJACENT COUNTY.....(C)
- CORPORATE LIMITS.....(L)
- CENTRAL BUSINESS DISTRICT BOUNDARY.....(B)



VOLUMES PREPARED BY THE OFFICE OF
TRANSPORTATION DATA & ANALYSIS

A.A.D.T. 2500
(ANNUAL AVERAGE DAILY TRAFFIC)
NUMERALS INDICATE ANNUAL AVERAGE DAILY
TRAFFIC VOLUMES ON DESIGNATED ROADWAYS

MUNICIPALITIES SHOWN
ON THIS SHEET
GARVIN
TRACY

NOTE: U.S. CENSUS FIGURES SHOWN FOR ALL MUNICIPALITIES UNLESS OTHERWISE STATED.
Municipalities under 5,000 pop. in LYON COUNTY
SHEET 5 OF 3