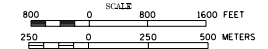


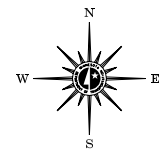
2001 TRAFFIC VOLUMES

MUNICIPALITIES OF
HUBBARD CO.

PREPARED BY THE
MINNESOTA DEPARTMENT OF TRANSPORTATION
PROGRAM SUPPORT GROUP
IN COOPERATION WITH
U.S. DEPARTMENT OF TRANSPORTATION
FEDERAL HIGHWAY ADMINISTRATION



2002
BASIC DATA - 1990



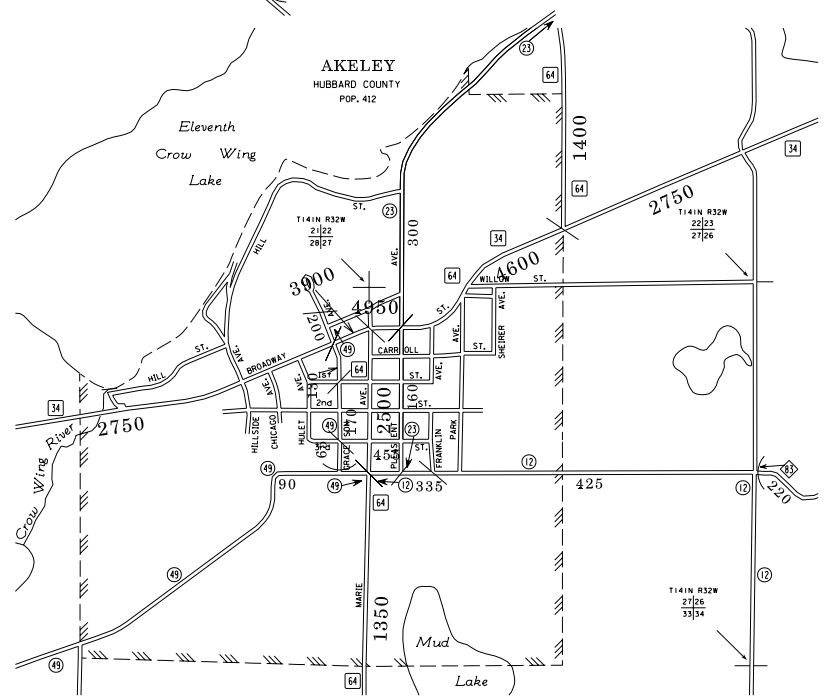
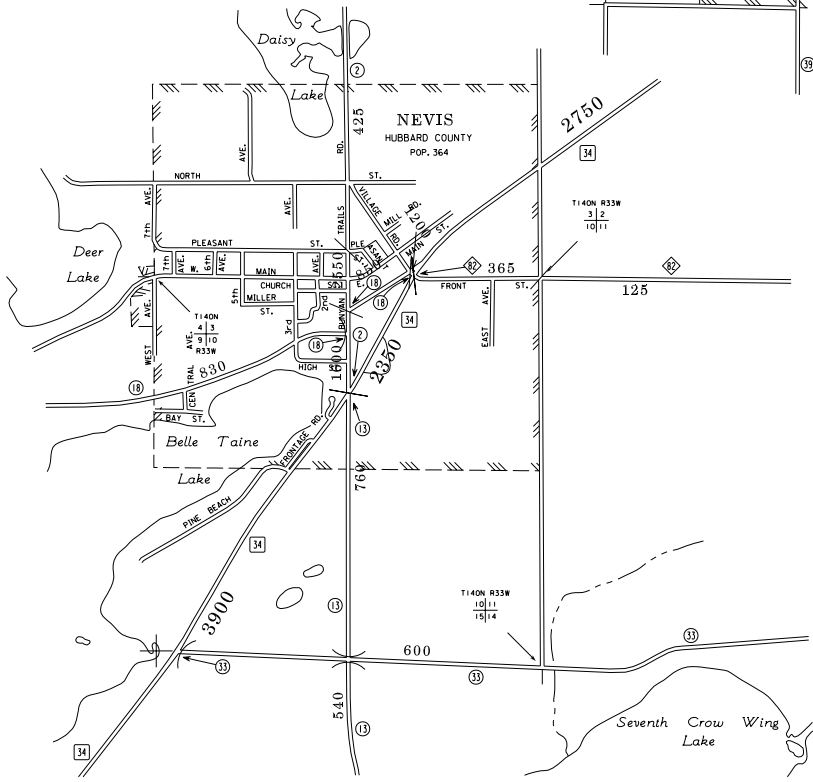
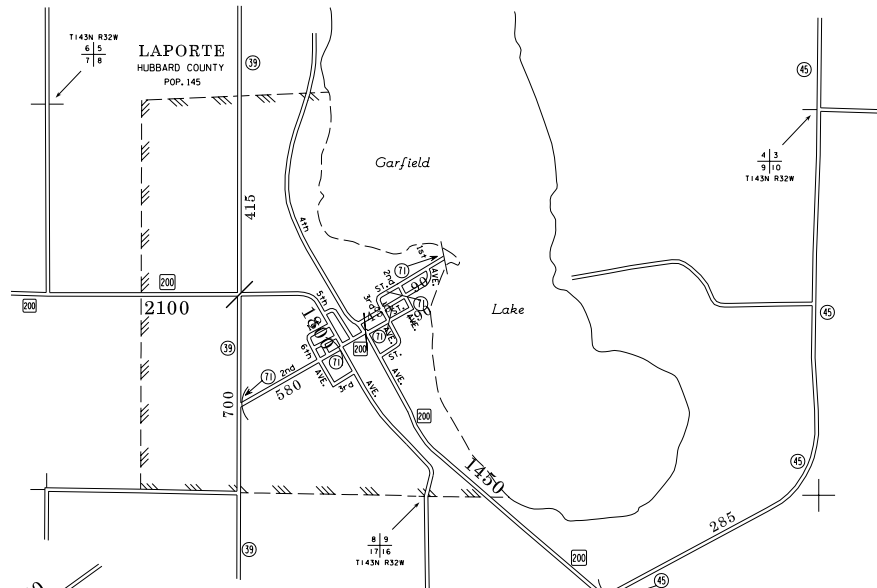
LEGEND

- INTERSTATE TRUNK HIGHWAY.....(I)
- U.S. TRUNK HIGHWAY.....(U)
- STATE TRUNK HIGHWAY.....(S)
- COUNTY STATE AID HIGHWAY.....(C)
- COUNTY ROAD.....(R)
- PUBLIC ROAD.....(P)
- PRIVATE ROAD.....(PR)
- CORPORATE LIMITS.....(L)

VOLUMES PREPARED BY
THE OFFICE OF
TRANSPORTATION DATA & ANALYSIS

NUMERALS INDICATE AVERAGE DAILY
TRAFFIC VOLUMES ON DESIGNATED ROADS
NOTE: T.H. ROUTES ARE 2000 A.A.D.T. VOLUMES

FOR DESIGNATED ROADS :
/ = SEGMENT ENDPOINT FOR ALL
ROADS INTERSECTED BY HATCH
(= SEGMENT ENDPOINT ONLY FOR
ROAD SEPARATED FROM INTERSECTING
ROAD BY ARC



MUNICIPALITIES SHOWN
ON THIS SHEET
NEVIS
AKELEY
LAPORTE

NOTE: 2000 U.S. CENSUS FIGURES SHOWN FOR ALL MUNICIPALITIES UNLESS OTHERWISE STATED.