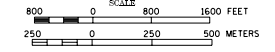
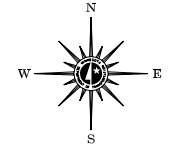


2001 TRAFFIC VOLUMES  
MUNICIPALITIES OF  
**FREEBORN CO.**

PREPARED BY THE  
MINNESOTA DEPARTMENT OF TRANSPORTATION  
PROGRAM SUPPORT GROUP  
IN COOPERATION WITH  
U.S. DEPARTMENT OF TRANSPORTATION  
FEDERAL HIGHWAY ADMINISTRATION



2002  
BASIC DATA - 1977



**LEGEND**

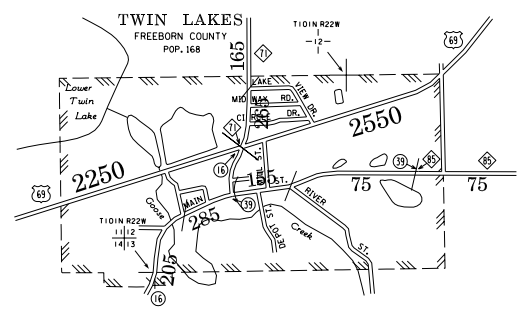
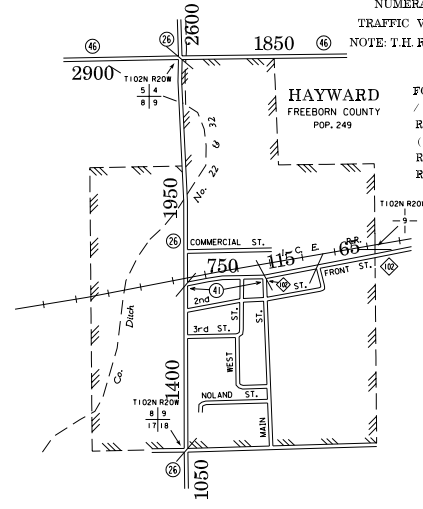
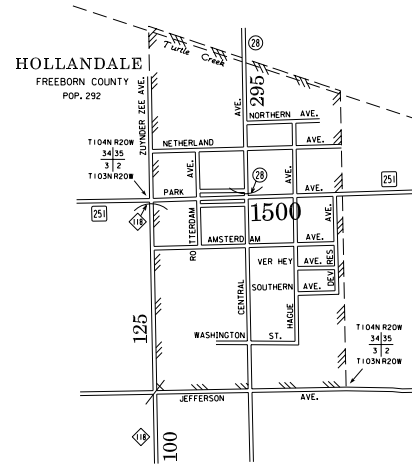
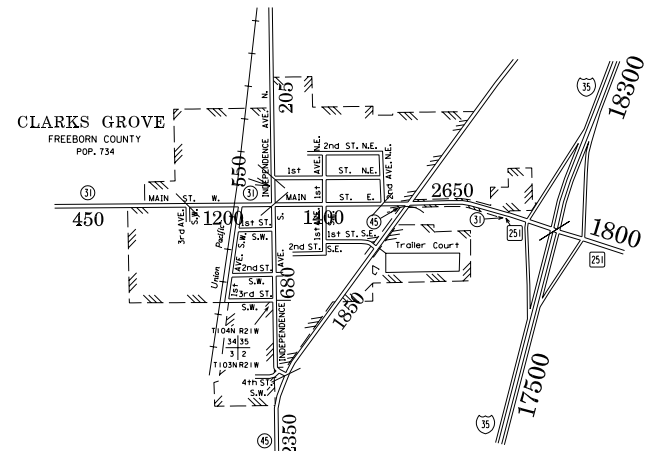
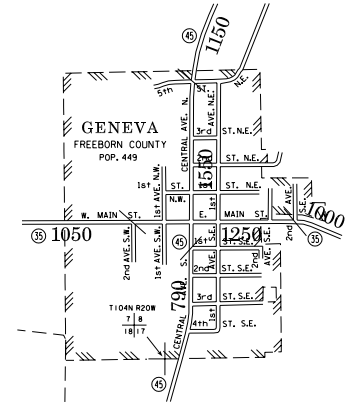
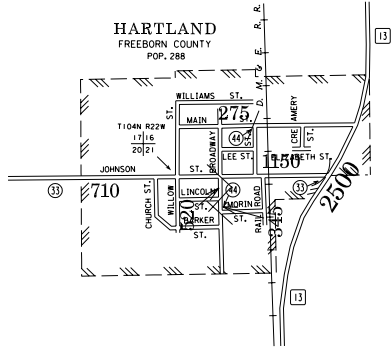
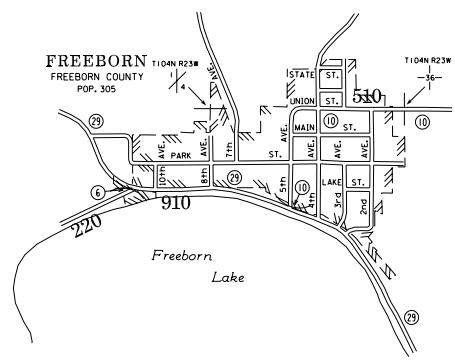
- INTERSTATE TRUNK HIGHWAY..... (I)
- U.S. TRUNK HIGHWAY..... (U)
- STATE TRUNK HIGHWAY..... (S)
- COUNTY STATE AID HIGHWAY..... (C)
- COUNTY ROAD..... (R)
- PUBLIC ROAD..... (P)
- PRIVATE ROAD..... (PR)
- CORPORATE LIMITS..... (CL)

VOLUMES PREPARED BY  
THE OFFICE OF  
TRANSPORTATION DATA & ANALYSIS

NUMERALS INDICATE AVERAGE DAILY  
TRAFFIC VOLUMES ON DESIGNATED ROADS  
NOTE: T.H. ROUTES ARE 2000 A.A.D.T. VOLUMES

FOR DESIGNATED ROADS:  
/ = SEGMENT ENDPOINT FOR ALL  
ROADS INTERSECTED BY HATCH  
( = SEGMENT ENDPOINT ONLY FOR  
ROAD SEPARATED FROM INTERSECTING  
ROAD BY ARC

MUNICIPALITIES SHOWN  
ON THIS SHEET  
CLARKS GROVE  
FREEBORN  
GENEVA  
HARTLAND  
HAYWARD  
HOLLANDALE  
TWIN LAKES



SOME TRAFFIC VOLUMES ARE BASED ON 2002 COUNTS

NOTE: 2000 U.S. CENSUS FIGURES SHOWN FOR ALL MUNICIPALITIES UNLESS OTHERWISE STATED.