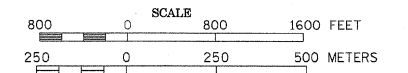
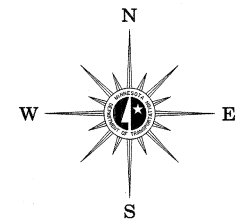


2000 TRAFFIC VOLUMES  
MUNICIPALITIES OF  
**WRIGHT CO.**

PREPARED BY THE  
MINNESOTA DEPARTMENT OF TRANSPORTATION  
ENGINEERING SERVICES DIVISION  
IN COOPERATION WITH  
U.S. DEPARTMENT OF TRANSPORTATION  
FEDERAL HIGHWAY ADMINISTRATION

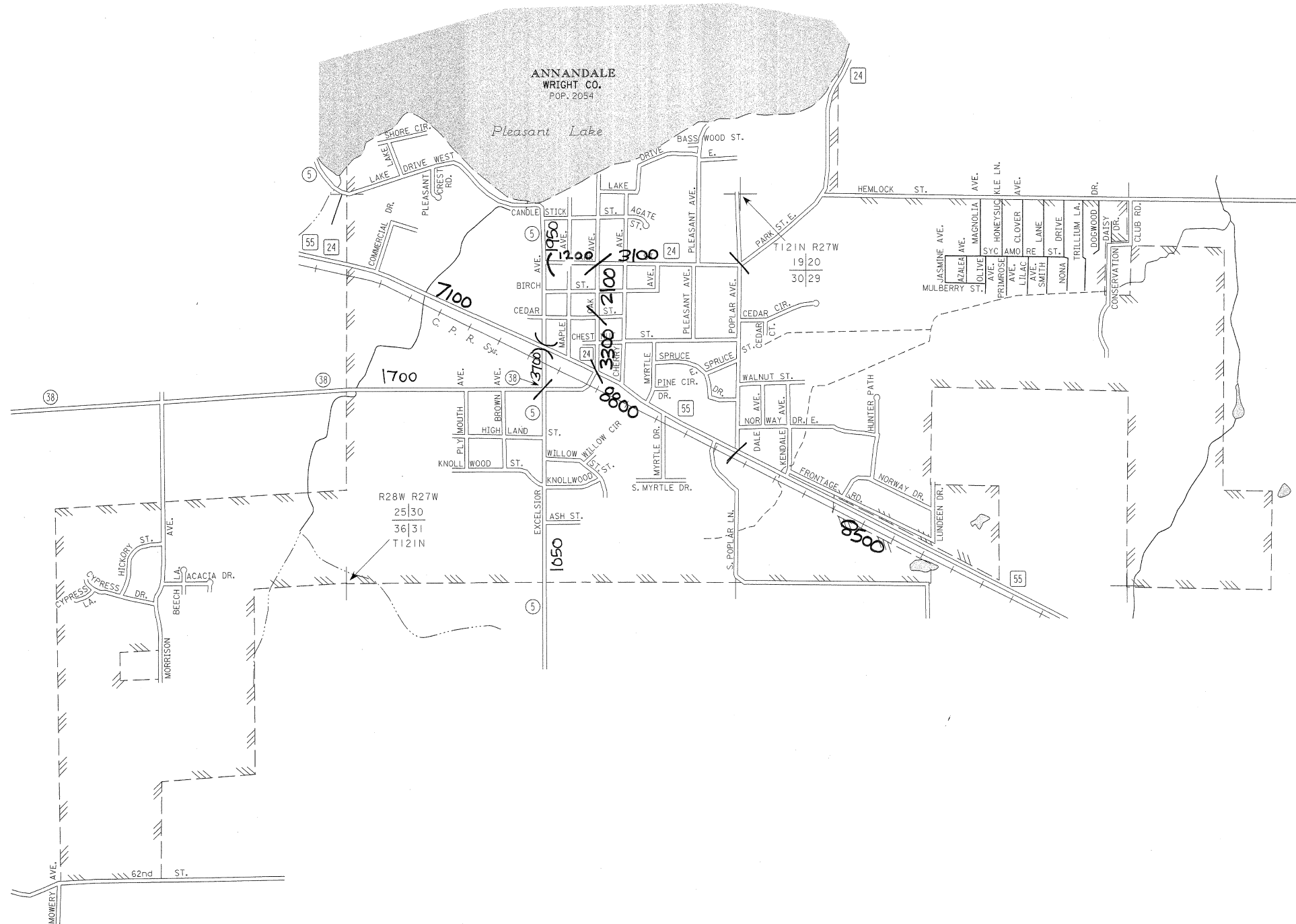


1999  
BASIC DATA - 1977



**LEGEND**

- INTERSTATE TRUNK HIGHWAY..... (35)
- U.S. TRUNK HIGHWAY..... (16)
- STATE TRUNK HIGHWAY..... (55)
- COUNTY STATE AID HIGHWAY..... (24)
- COUNTY ROAD..... (38)
- PUBLIC ROAD.....
- PRIVATE ROAD.....
- CORPORATE LIMITS.....



VOLUMES PREPARED BY THE OFFICE OF  
TRANSPORTATION DATA & ANALYSIS

A.A.D.T. .... 2500  
(ANNUAL AVERAGE DAILY TRAFFIC)

NUMERALS INDICATE ANNUAL AVERAGE DAILY  
TRAFFIC VOLUMES ON DESIGNATED ROADWAYS

MUNICIPALITIES SHOWN  
ON THIS SHEET  
ANNANDALE