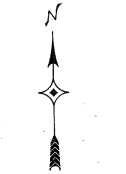


2000 TRAFFIC VOLUMES  
MUNICIPALITIES OF  
**LAC QUI PARLE CO.**

PREPARED BY THE  
MINNESOTA DEPARTMENT OF TRANSPORTATION  
TECHNICAL SERVICES DIVISION  
IN COOPERATION WITH THE  
U.S. DEPARTMENT OF TRANSPORTATION  
FEDERAL HIGHWAY ADMINISTRATION

SCALE 800' 0 800' 1600'

1999  
BASIC DATA-1977



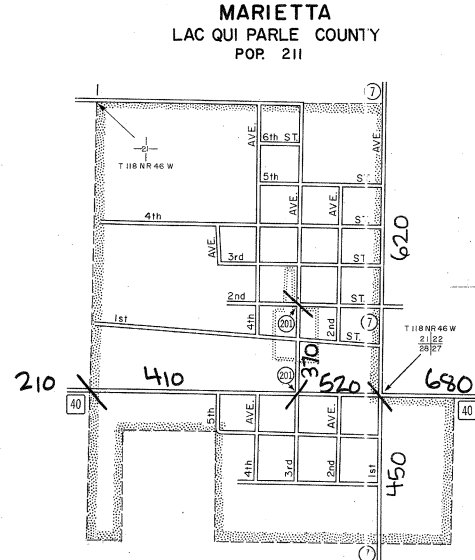
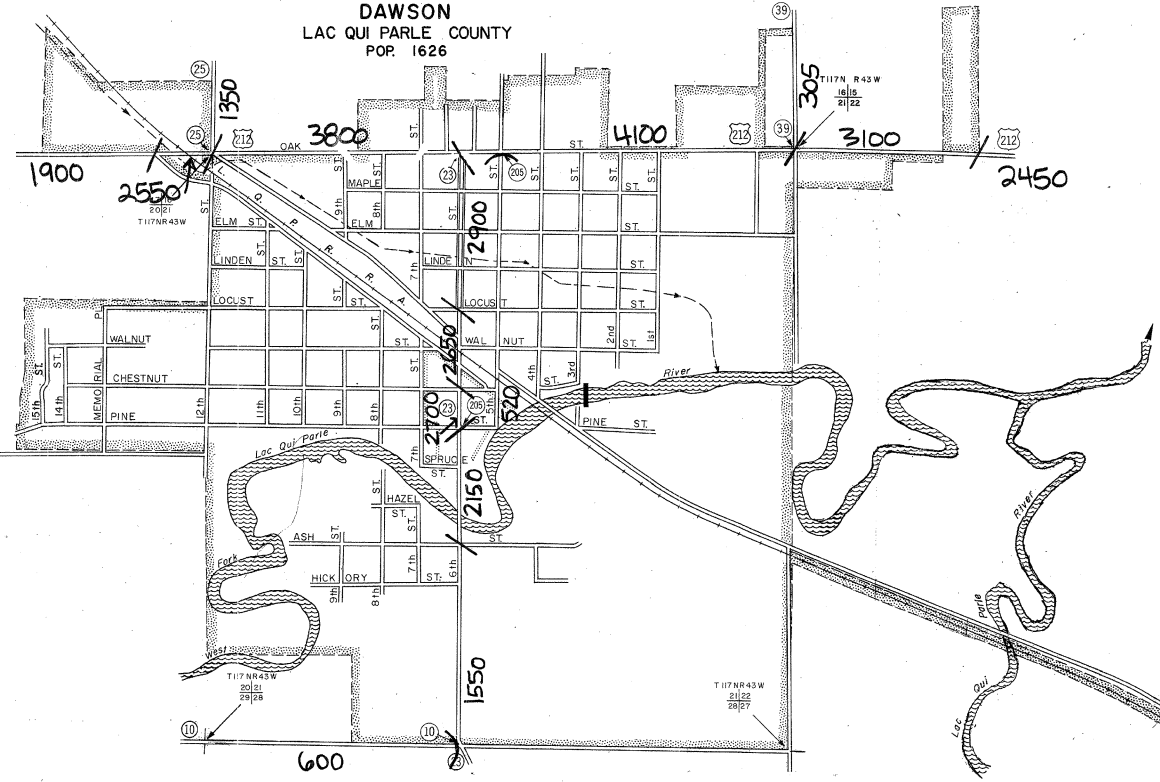
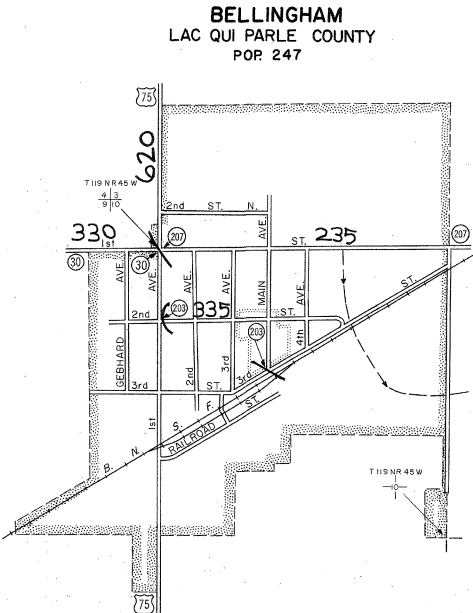
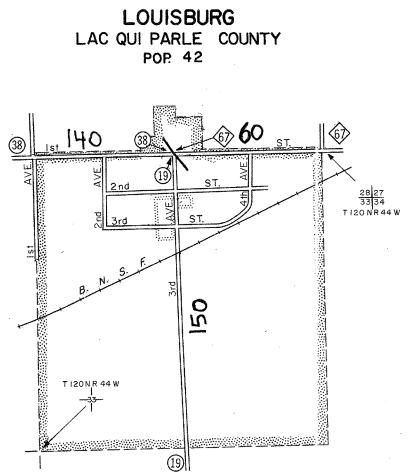
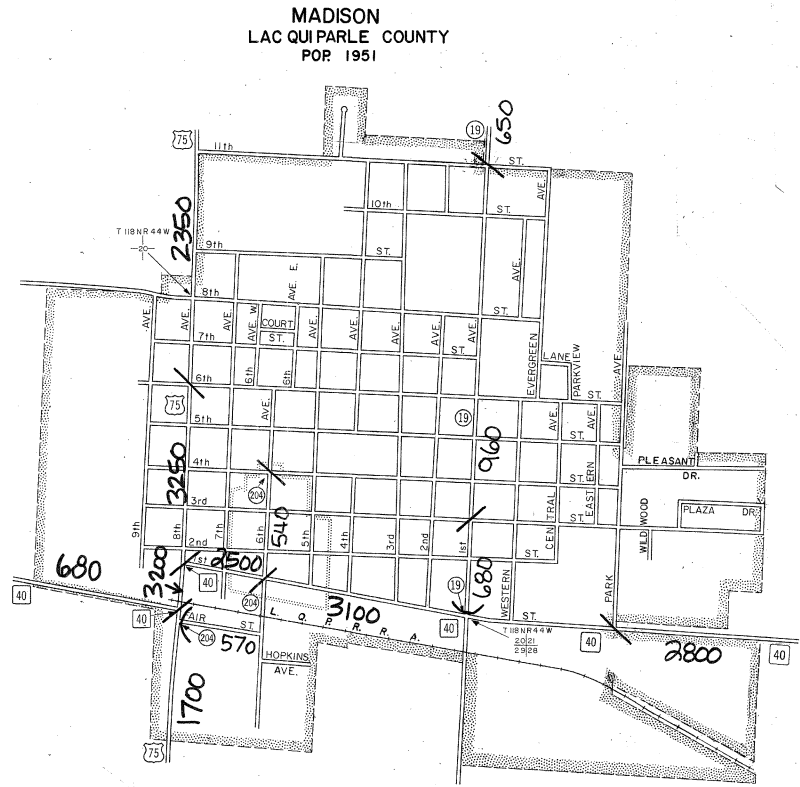
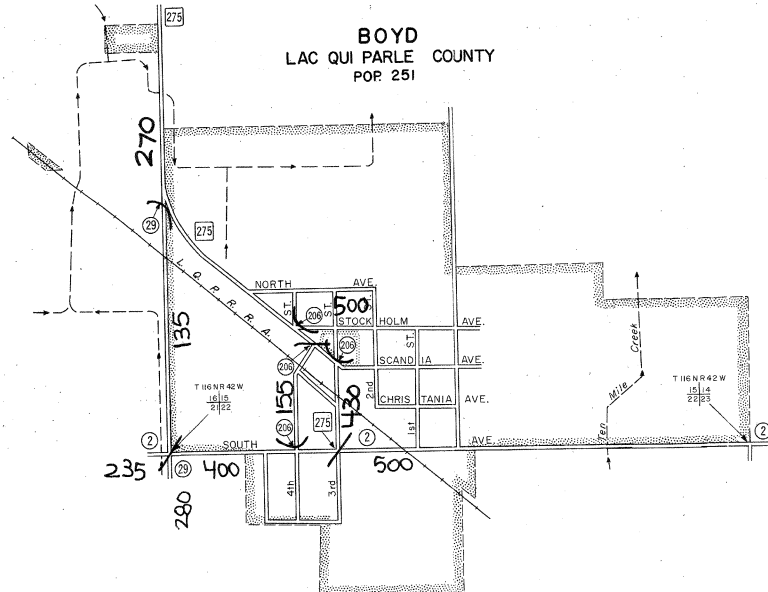
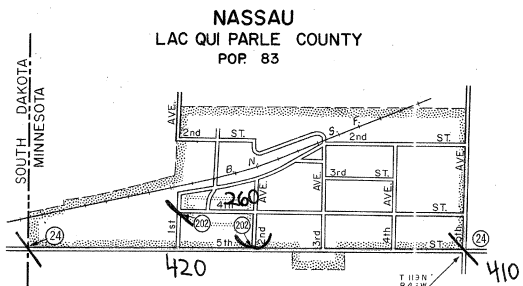
**LEGEND**

- INTERSTATE TRUNK HIGHWAY..... (35)
- U.S. NUMBERED TRUNK HIGHWAY..... (10)
- STATE NUMBERED TRUNK HIGHWAY..... (6)
- COUNTY STATE AID HIGHWAY..... (3)
- COUNTY ROAD..... (1)
- COUNTY STATE AID HIGHWAY IN ADJOINING COUNTY..... (2)
- COUNTY ROAD IN ADJOINING COUNTY..... (1)
- CORPORATE LIMITS..... (1)
- CENTRAL BUSINESS DISTRICT BOUNDARY..... (1)

VOLUMES PREPARED BY THE OFFICE OF  
TRANSPORTATION DATA & ANALYSIS

A.A.D.T. .... 2500  
(ANNUAL AVERAGE DAILY TRAFFIC)

NUMERALS INDICATE ANNUAL AVERAGE DAILY  
TRAFFIC VOLUMES ON DESIGNATED ROADWAYS



- MUNICIPALITIES SHOWN  
ON THIS SHEET
- BELLINGHAM
  - BOYD
  - DAWSON
  - LOUISBURG
  - MADISON
  - MARIETTA
  - NASSAU

NOTE: U.S. CENSUS FIGURES SHOWN FOR ALL MUNICIPALITIES UNLESS OTHERWISE STATED.