

2000 TRAFFIC VOLUMES

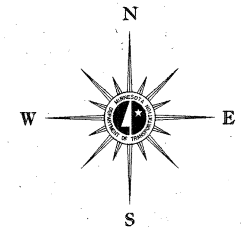
MUNICIPALITIES OF  
**COTTONWOOD**

PREPARED BY THE  
MINNESOTA DEPARTMENT OF TRANSPORTATION  
TECHNICAL SERVICES DIVISION  
IN COOPERATION WITH  
U.S. DEPARTMENT OF TRANSPORTATION  
FEDERAL HIGHWAY ADMINISTRATION

SCALE 800' 0 800' 1600'

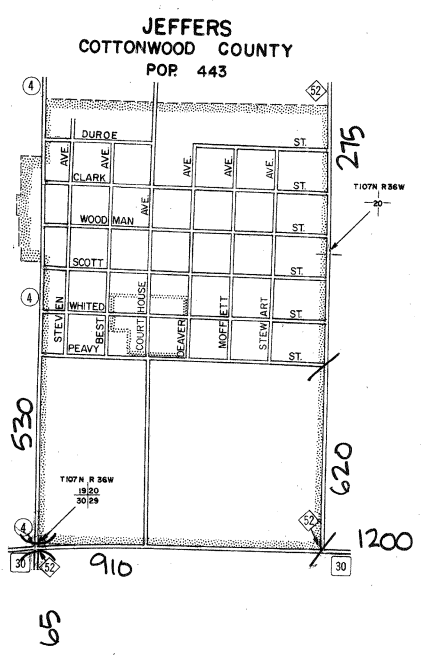
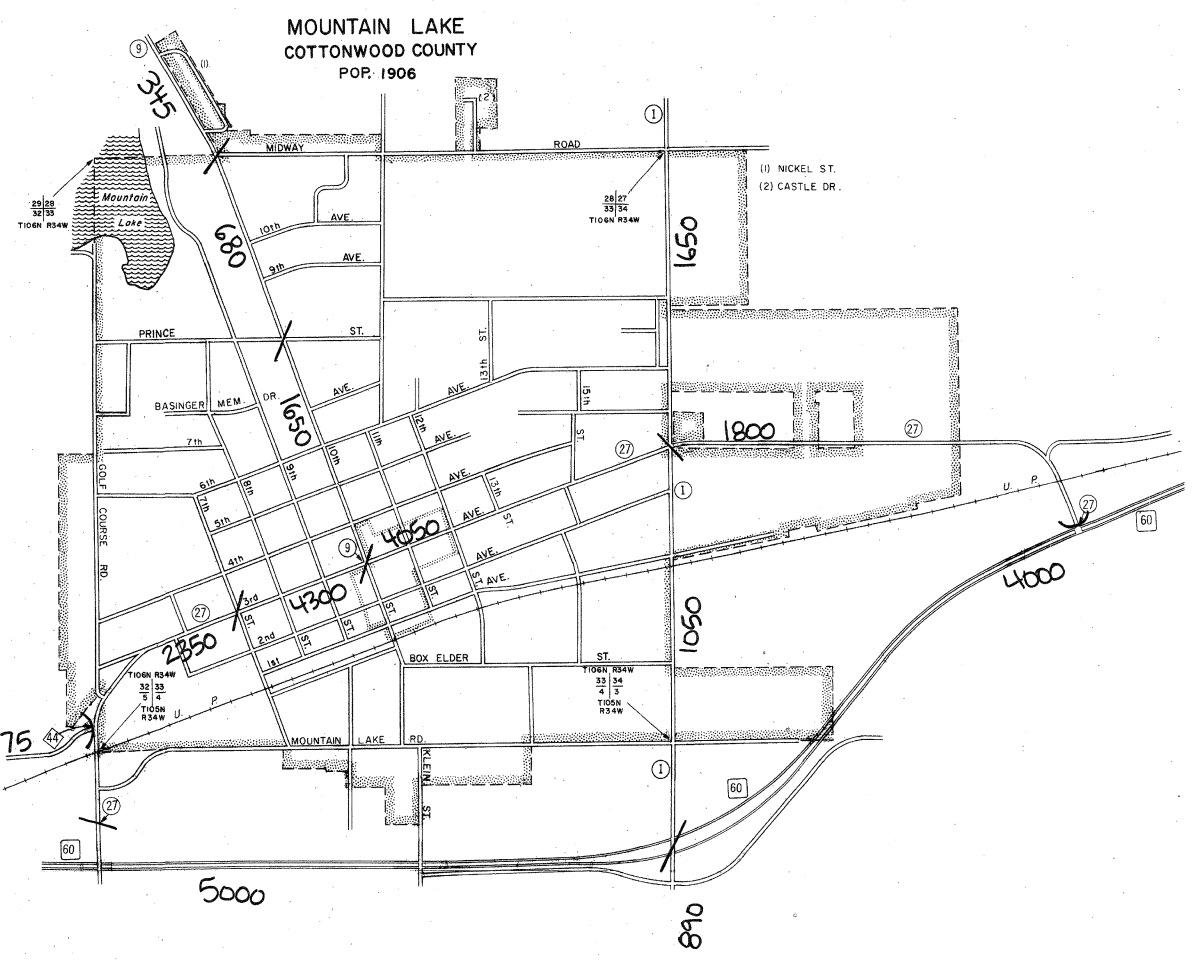
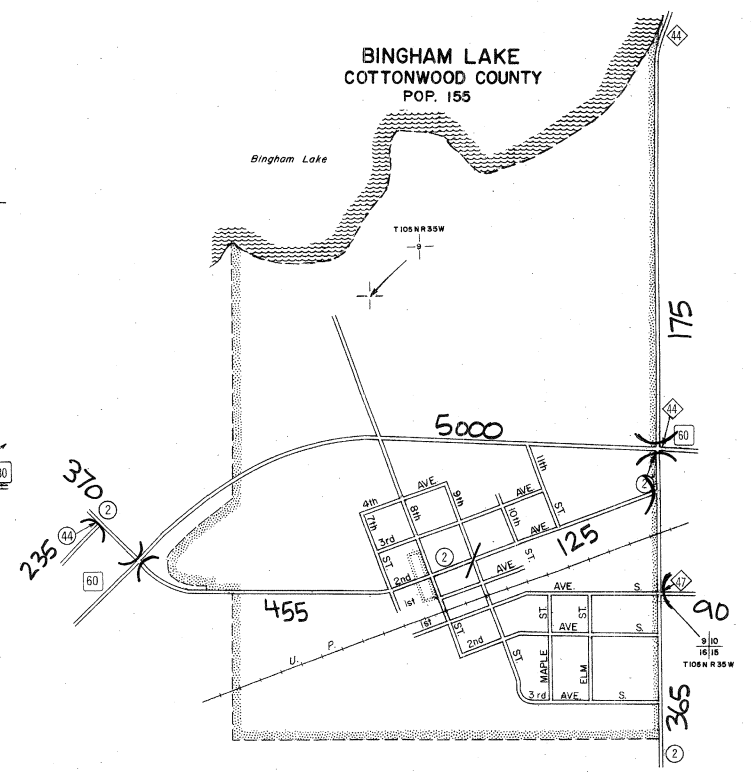
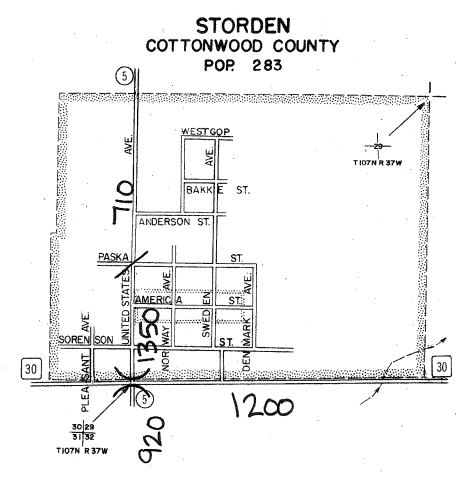
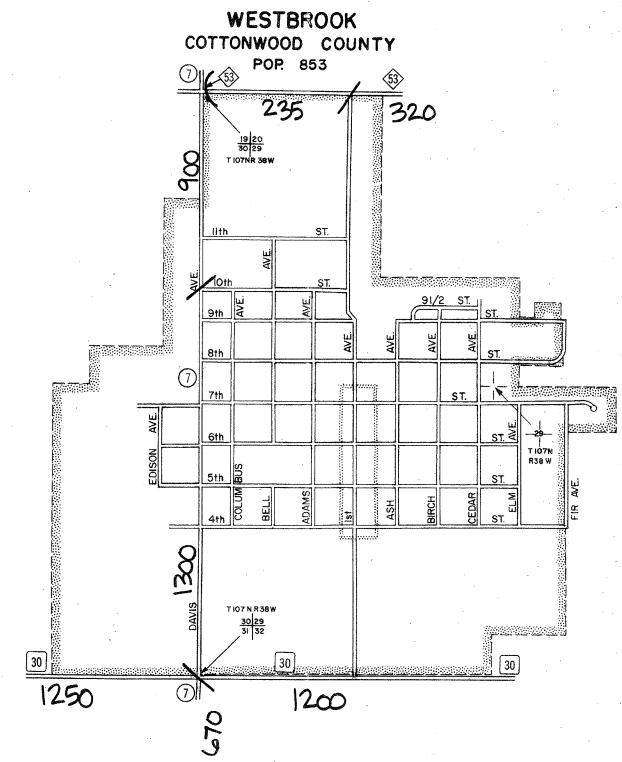
1999

BASIC DATA - 1977



LEGEND

- INTERSTATE TRUNK HIGHWAY..... (35)
- U.S. TRUNK HIGHWAY..... (10)
- STATE TRUNK HIGHWAY..... (55)
- COUNTY STATE AID HIGHWAY..... (23)
- COUNTY ROAD..... (4)
- COUNTY STATE AID HIGHWAY IN ADJOINING COUNTY..... (31)
- COUNTY ROAD IN ADJOINING COUNTY..... (45)
- CORPORATE LIMITS.....
- CENTRAL BUSINESS DISTRICT BOUNDARY..
- PUBLIC ROAD .....
- PRIVATE ROAD .....



VOLUMES PREPARED BY THE OFFICE OF  
TRANSPORTATION DATA & ANALYSIS

A.A.D.T. .... 2500  
(ANNUAL AVERAGE DAILY TRAFFIC)

NUMERALS INDICATE ANNUAL AVERAGE DAILY  
TRAFFIC VOLUMES ON DESIGNATED ROADWAYS

- MUNICIPALITIES SHOWN  
ON THIS SHEET
- BINGHAM LAKE
  - JEFFERS
  - MOUNTAIN LAKE
  - STORDEN
  - WESTBROOK

NOTE: U.S. CENSUS FIGURES SHOWN FOR ALL MUNICIPALITIES UNLESS OTHERWISE STATED.