

2000 TRAFFIC VOLUMES

MUNICIPALITIES OF

BECKER CO.

PREPARED BY THE
 MINNESOTA DEPARTMENT OF TRANSPORTATION
 TECHNICAL SERVICES DIVISION
 IN COOPERATION WITH THE
 U.S. DEPARTMENT OF TRANSPORTATION
 FEDERAL HIGHWAY ADMINISTRATION

SCALE 800' 0 800' 1600'

1998

BASIC DATA: 1977



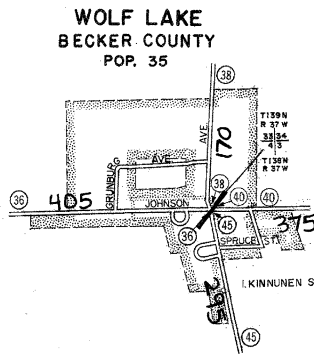
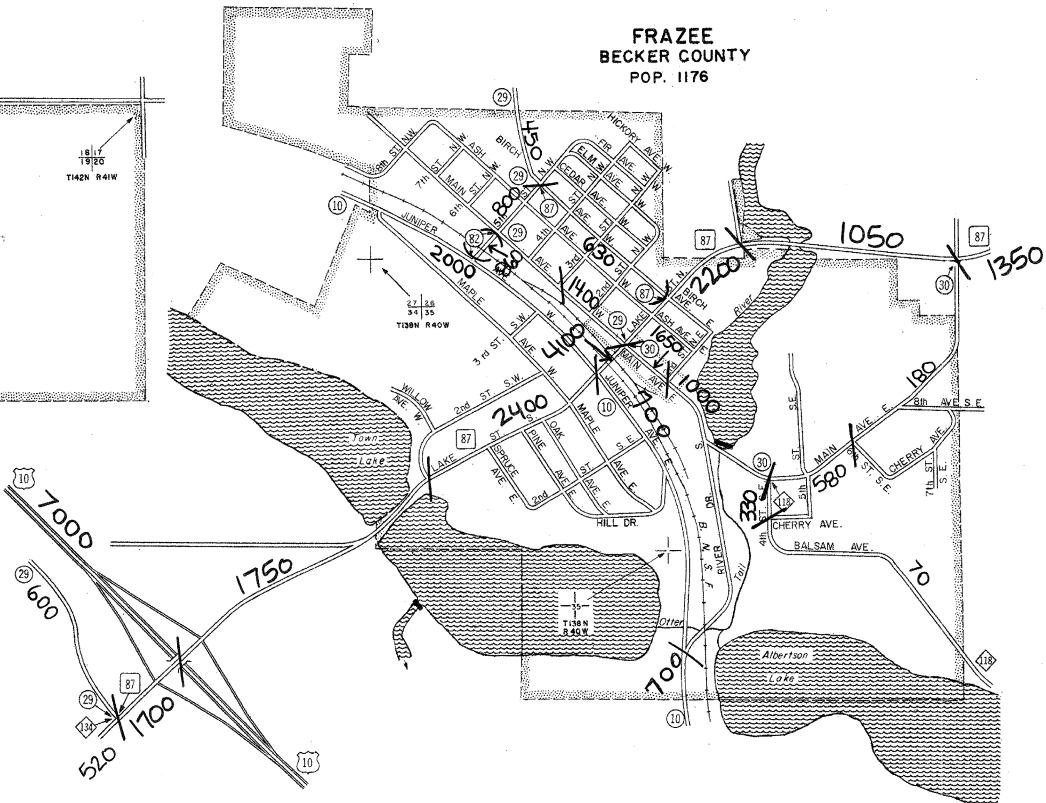
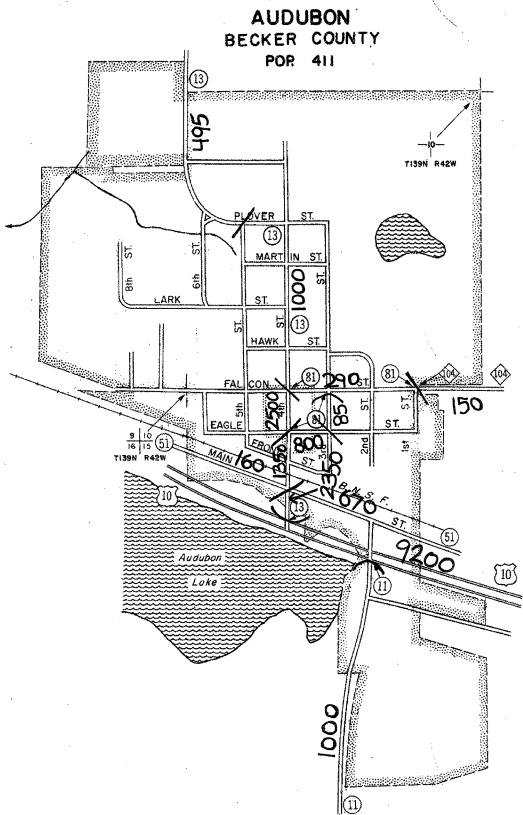
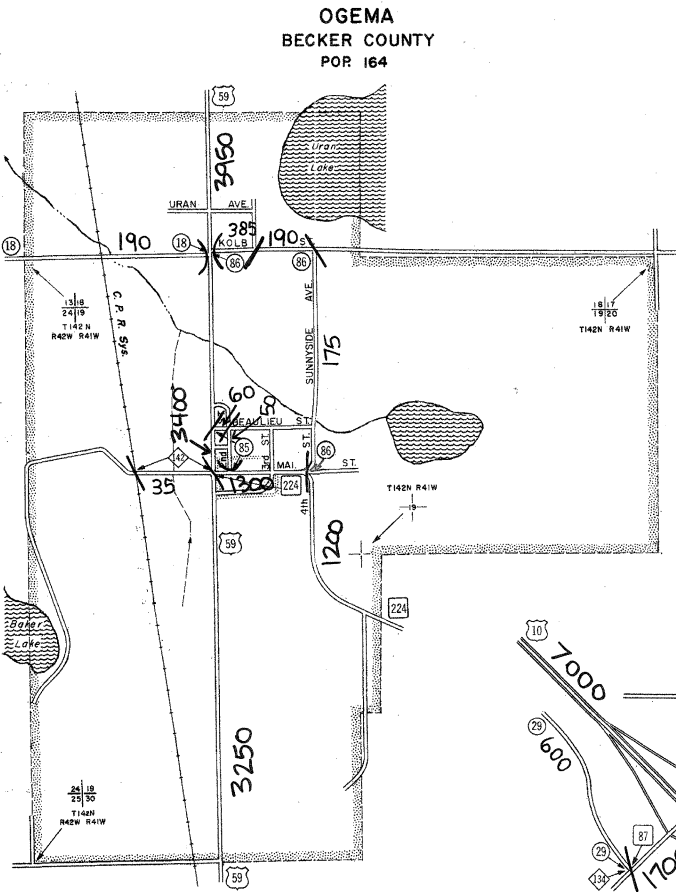
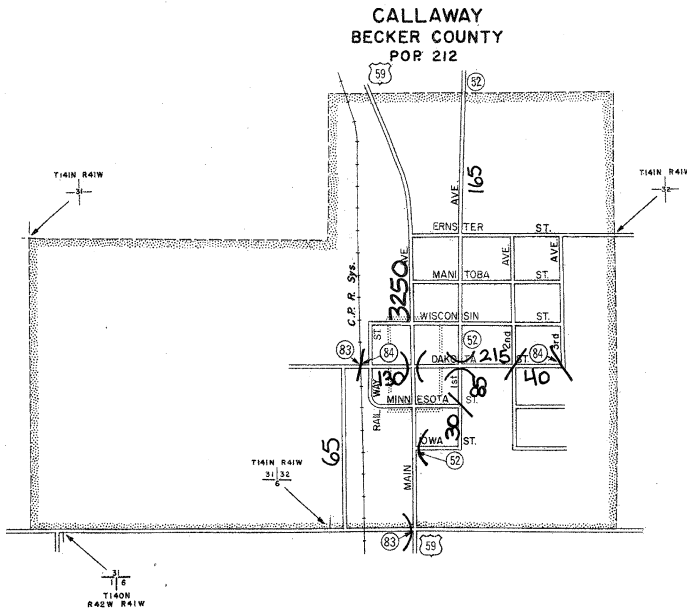
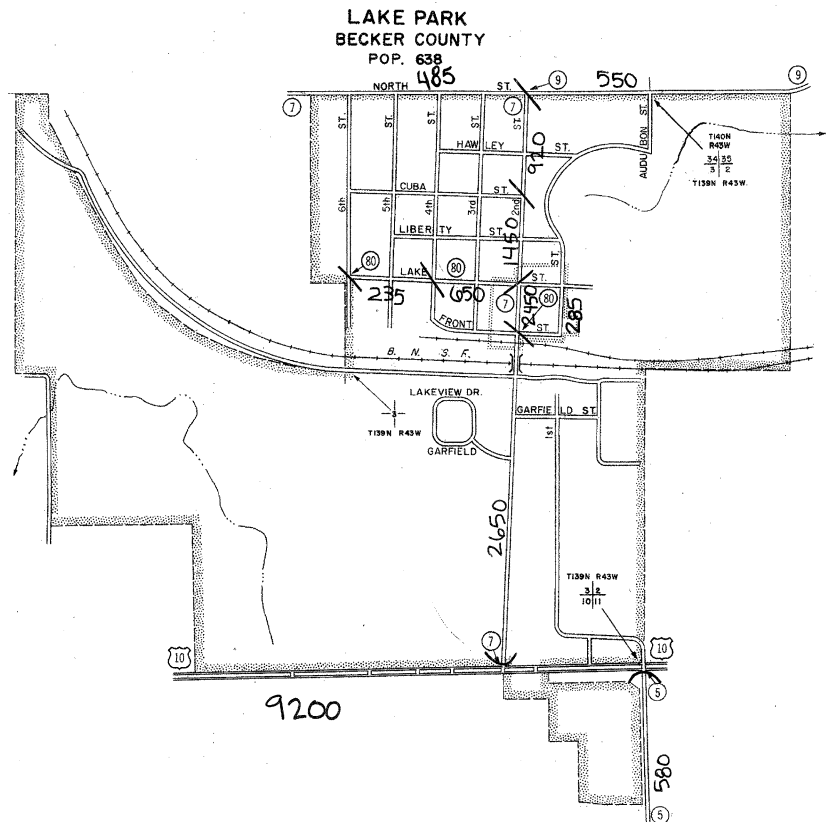
LEGEND

- INTERSTATE TRUNK HIGHWAY..... (35)
- U.S. NUMBERED TRUNK HIGHWAY..... (10)
- STATE NUMBERED TRUNK HIGHWAY..... (6)
- COUNTY STATE AID HIGHWAY..... (3)
- COUNTY ROAD..... (7)
- COUNTY STATE AID HIGHWAY IN ADJOINING COUNTY..... (2)
- COUNTY ROAD IN ADJOINING COUNTY..... (1)
- CORPORATE LIMITS.....
- CENTRAL BUSINESS DISTRICT BOUNDARY.....

VOLUMES PREPARED BY THE OFFICE OF
 TRANSPORTATION DATA & ANALYSIS

A.A.D.T. 2500
 (ANNUAL AVERAGE DAILY TRAFFIC)

NUMERALS INDICATE ANNUAL AVERAGE DAILY
 TRAFFIC VOLUMES ON DESIGNATED ROADWAYS



MUNICIPALITIES SHOWN
 ON THIS SHEET
 AUDUBON
 CALLAWAY
 FRAZEE
 LAKE PARK
 OGEMA
 WOLF LAKE

NOTE: U.S. CENSUS FIGURES SHOWN FOR ALL
 MUNICIPALITIES UNLESS OTHERWISE STATED.