

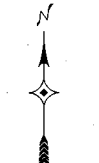
FINAL
NOVEMBER 2000

1999 TRAFFIC VOLUMES
MUNICIPALITIES OF
WABASHA CO.

PREPARED BY THE
MINNESOTA DEPARTMENT OF TRANSPORTATION
TECHNICAL SERVICES DIVISION
IN COOPERATION WITH THE
U.S. DEPARTMENT OF TRANSPORTATION
FEDERAL HIGHWAY ADMINISTRATION

SCALE
0 800' 1600'

1999
BASIC DATA 1977



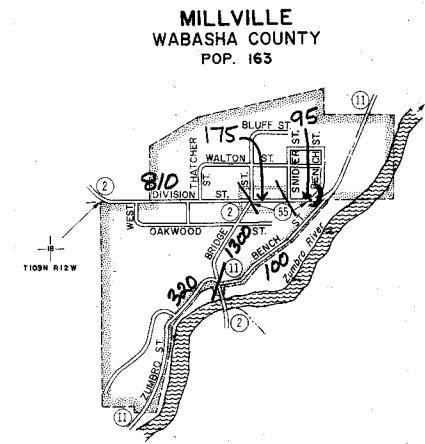
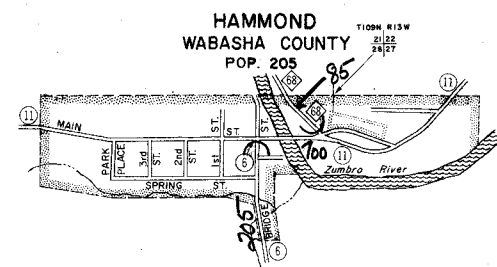
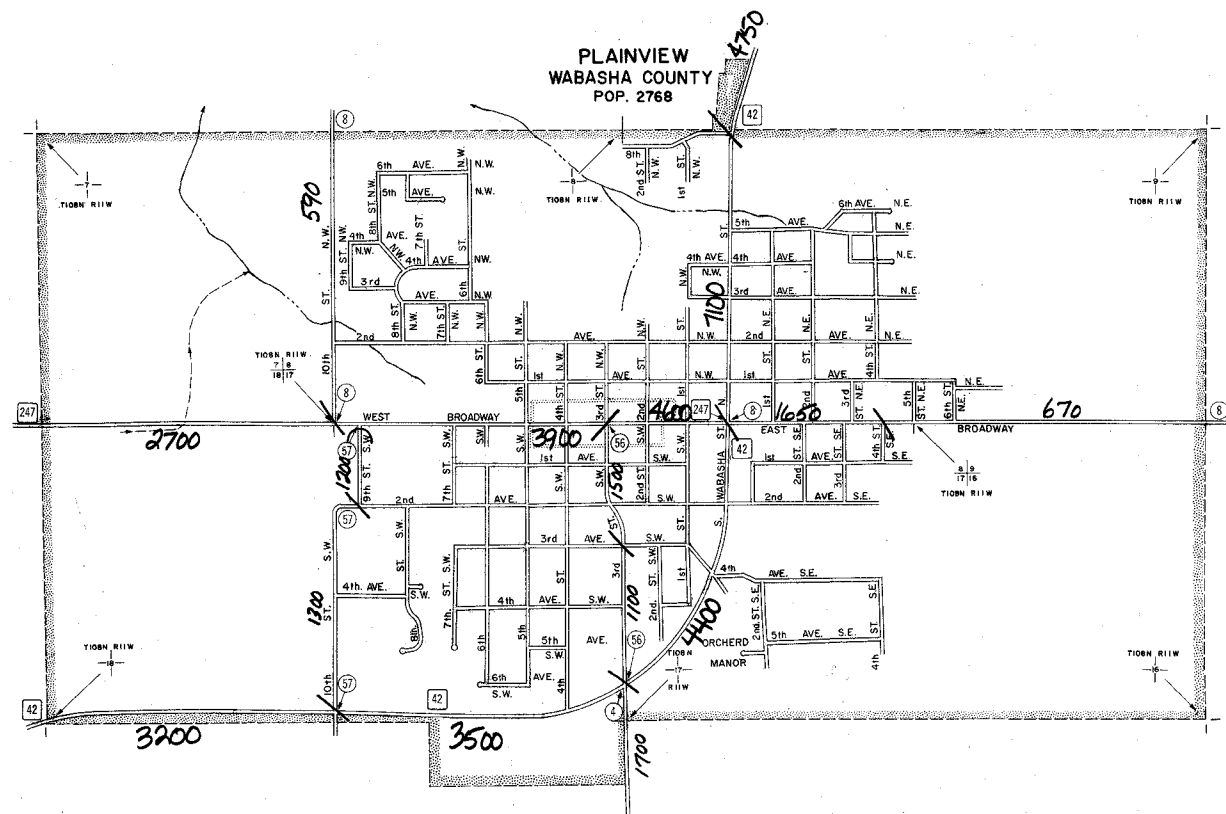
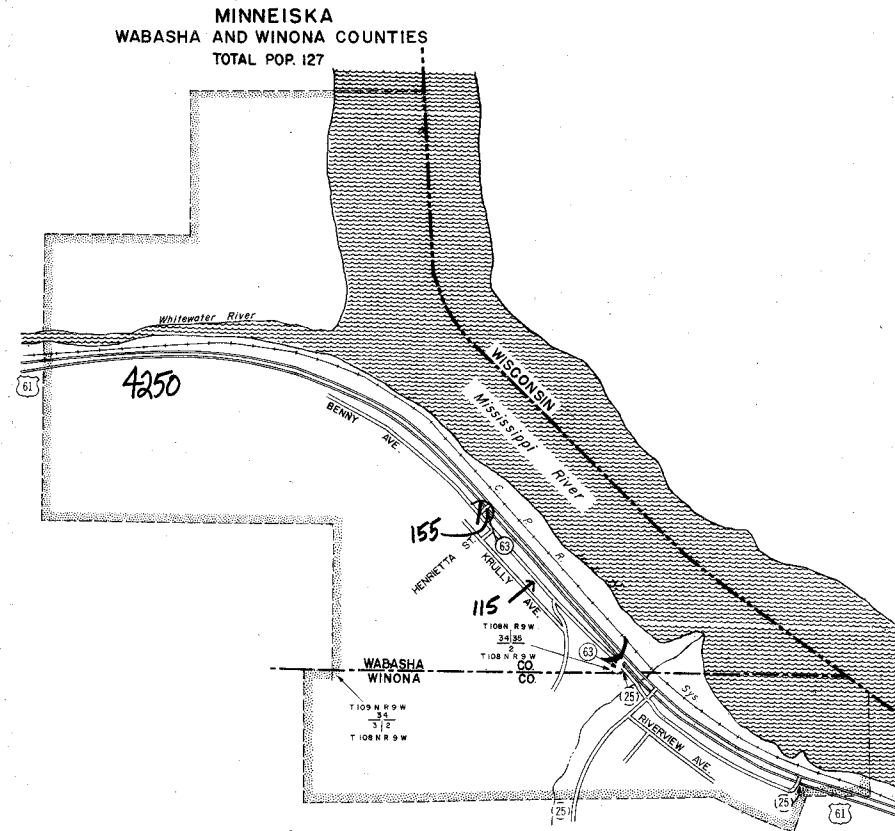
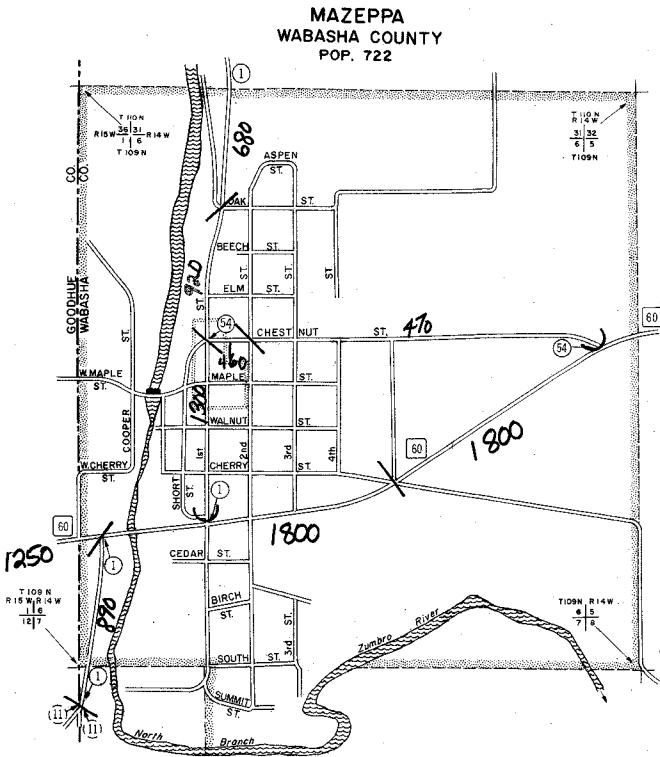
LEGEND

- INTERSTATE TRUNK HIGHWAY (35)
- U.S. NUMBERED TRUNK HIGHWAY (10)
- STATE NUMBERED TRUNK HIGHWAY (6)
- COUNTY STATE AID HIGHWAY (3)
- COUNTY ROAD (1)
- COUNTY STATE AID HIGHWAY IN ADJOINING COUNTY (2)
- COUNTY ROAD IN ADJOINING COUNTY (1)
- CORPORATE LIMITS
- CENTRAL BUSINESS DISTRICT BOUNDARY

A.A.D.T. 2500
(ANNUAL AVERAGE DAILY TRAFFIC)

NUMERALS INDICATE ANNUAL AVERAGE TRAFFIC VOLUMES ON DESIGNATED ROADWAYS

VOLUMES PREPARED BY
TRANSPORTATION RESEARCH AND
INVESTMENT MANAGEMENT DIVISION



- MUNICIPALITIES SHOWN ON THIS SHEET
- HAMMOND
 - MAZEPPA
 - MILLVILLE
 - MINNEISKA
 - PLAINVIEW

U. S. CENSUS FIGURES SHOWN FOR ALL MUNICIPALITIES UNLESS OTHERWISE STATED.