

**FINAL**  
NOVEMBER 2000

**1999 TRAFFIC VOLUMES**  
**MUNICIPALITIES OF**  
**PENNINGTON CO.**

PREPARED BY THE  
**MINNESOTA DEPARTMENT OF TRANSPORTATION**  
TECHNICAL SERVICES DIVISION  
IN COOPERATION WITH THE  
**U.S. DEPARTMENT OF TRANSPORTATION**  
FEDERAL HIGHWAY ADMINISTRATION

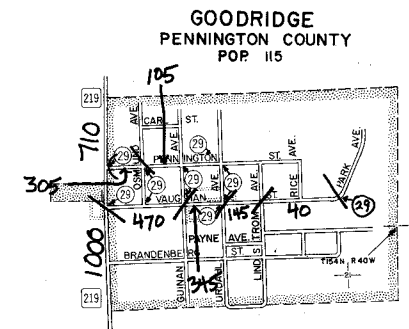
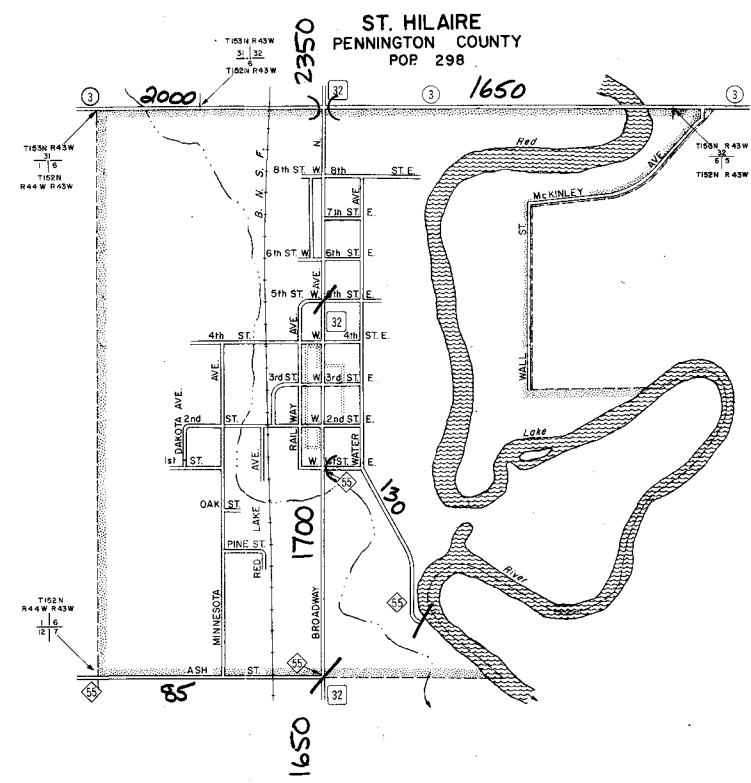
SCALE 800' 0 800' 1600'

**1999**  
BASIC DATA: 1977



**LEGEND**

- INTERSTATE TRUNK HIGHWAY ..... (55)
- U.S. NUMBERED TRUNK HIGHWAY ..... (10)
- STATE NUMBERED TRUNK HIGHWAY ..... (5)
- COUNTY STATE AID HIGHWAY ..... (3)
- COUNTY ROAD ..... (3)
- COUNTY STATE AID HIGHWAY IN ADJOINING COUNTY ..... (2)
- COUNTY ROAD IN ADJOINING COUNTY ..... (2)
- CORPORATE LIMITS ..... (1)
- CENTRAL BUSINESS DISTRICT BOUNDARY ..... (1)



A.A.D.T. .... 2500  
(ANNUAL AVERAGE DAILY TRAFFIC)  
NUMERALS INDICATE ANNUAL AVERAGE TRAFFIC VOLUMES ON DESIGNATED ROADWAYS

VOLUMES PREPARED BY  
TRANSPORTATION RESEARCH AND  
INVESTMENT MANAGEMENT DIVISION

MUNICIPALITIES SHOWN  
ON THIS SHEET  
GOODRIDGE  
ST. HILAIRE

U.S. CENSUS FIGURES SHOWN FOR ALL MUNICIPALITIES UNLESS OTHERWISE STATED.