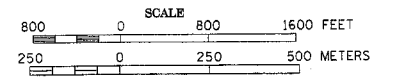


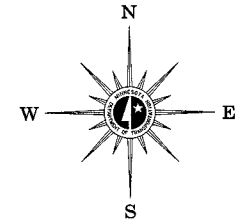
FINAL
NOVEMBER 2000

1999 TRAFFIC VOLUMES
MUNICIPALITIES OF
ISANTI CO.

PREPARED BY THE
MINNESOTA DEPARTMENT OF TRANSPORTATION
ENGINEERING SERVICES DIVISION
IN COOPERATION WITH
U.S. DEPARTMENT OF TRANSPORTATION
FEDERAL HIGHWAY ADMINISTRATION

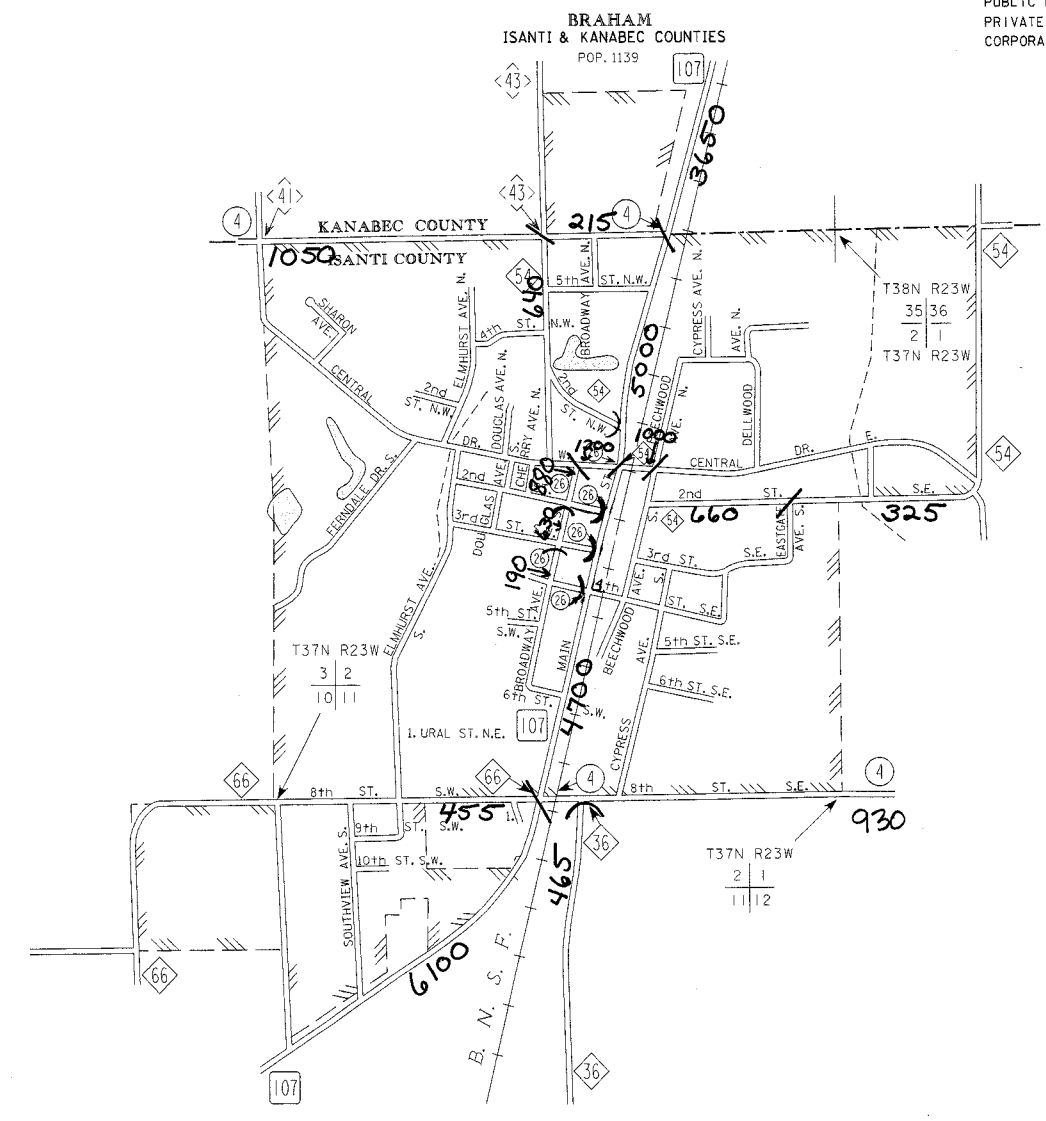
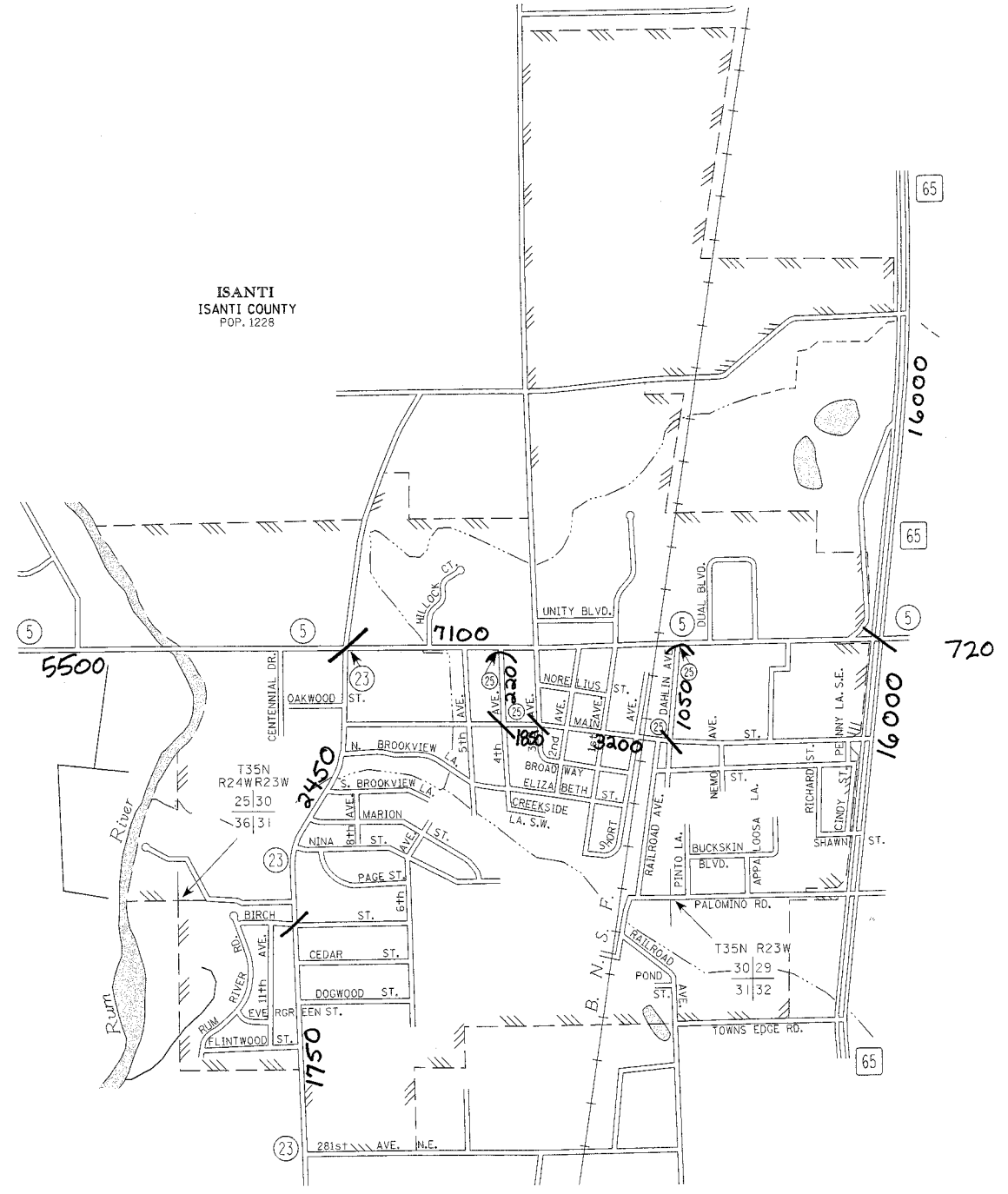


1998
BASIC DATA - 1994



LEGEND

- INTERSTATE TRUNK HIGHWAY..... 35
- U.S. TRUNK HIGHWAY..... 13
- STATE TRUNK HIGHWAY..... 55
- COUNTY STATE AID HIGHWAY..... 23
- COUNTY ROAD..... 43
- PUBLIC ROAD.....
- PRIVATE ROAD.....
- CORPORATE LIMITS.....



A.A.D.T. 2500
(ANNUAL AVERAGE DAILY TRAFFIC)
NUMERALS INDICATE ANNUAL AVERAGE TRAFFIC VOLUMES ON DESIGNATED ROADWAYS

VOLUMES PREPARED BY
TRANSPORTATION RESEARCH AND
INVESTMENT MANAGEMENT DIVISION

MUNICIPALITIES SHOWN
ON THIS SHEET
BRAHAM
ISANTI