

INTERNATIONAL HISTORIC HIGHWAY 75

“KING OF TRAILS”

SCENIC BYWAY



CORRIDOR WORK PLAN

Draft

May 2015

Completed by:

Annette Fiedler

SRDC Physical Development Director

2401 Broadway Ave

Slayton, MN 56172

phydev@swrdc.org

507.836.1631

Table of Contents

A. BACKGROUND1

B. TRANSPORTATION CHARACTERISTICS.....5

C. INTRINSIC QUALITIES.....10

D. VIEWSHED MAPPING/PHOTOS13

E. BYWAY ORGANIZATION / FUNDING.....13

F. LAND USE PLANNING/CORRIDOR MANAGEMENT PLANNING18

Appendix 1: KOT Section Maps and Intrinsic Qualities21

Appendix 2: Birding opportunities in the King of Trails Corridor.....56

Appendix 3: Off Highway Vehicle (OHV) Trails in Minnesota59

Appendix 4: Funded Transportation Projects60

Appendix 5. KOT Work Program 2015 - 202462

Planning and Marketing – Outreach and Partnerships..... 63

Intrinsic Resources – Events and the Enhancements of resources 70

Transportation – Safety and Access for All. 73

Appendix 6. Potential Scenic Byway Funding Sources.....78





MINNESOTA KING OF HIGHWAYS SCENIC BYWAY

<http://highway75.com/>

Name: International Historic Highway 75 “King of Trails” Coalition

Contact person (name/title): Betty Popkes, King of Trails Coalition President

Phone: 507-368-4583

Fax: n/a

E-mail: info@highway75.com

Mailing address: 400 Edgewater Drive

City: Lake Benton

Zip: 56149

County: Lincoln



ROUTE INFORMATION

Corridor: U.S. Highway 75 from Minnesota/Iowa border south of Luverne, MN to Minnesota/Manitoba border north of Noyes, MN. The Corridor boundaries are between I-29 on the west and US Highway 59 to the east.

Total length: 414 miles

Minnesota Scenic Byway Designation: 2004

Managing roadway authorities: MnDOT Districts 7, 8, 4 and 2

Counties and Cities the Routes Passes Through:

Counties: Kittson, Marshall, Polk, Norman, Clay, Wilkin, Traverse, Big Stone, Lac qui Parle, Yellow Medicine, Lincoln, Pipestone and Rock Counties.

Cities: Humboldt, Hallock, Kennedy, Donaldson, Stephen, Argyle, Warren, Angus, Euclid, Crookston, Eldred, Climax, Nielsville, Shelly, Halstad, Hendrum, Perley, Georgetown, Moorhead, Wolverton, Kent, Breckenridge, Wheaton, Graceville, Clinton, Ortonville, Bellingham, Madison, Canby, Lake Benton, Pipestone and Luverne.

Type of Route Use/Bicycle/Pedestrian Traffic: Highway 75 is a major north/south commercial and farm to market route that parallels I-29 to the west in South Dakota. There is not significant bicycle or pedestrian traffic on or adjacent to the roadway. However, several of the communities have small trail systems that may be adjacent to or cross Highway 75.

Spur or Loop Off Main Travel Route: Highway 75 could be considered an alternate north/south route parallel to I-29.

Connection to other Scenic Byways: Highway 75 connects to the Minnesota River Valley National Scenic Byway in the city of Ortonville and to the Waters of the Dancing Sky Byway at the city of Hallock.

A. BACKGROUND

The International Historic Highway 75 “**King of Trails**” Coalition formed in 1996 after the review of historical information showing the rich history of the route. Since 1917 the corridor was called “The King of Trails” because it traversed across the United States from Galveston, Texas to Winnipeg, Canada. In 2001 the Coalition worked with the Minnesota Legislature to legislatively designate Highway 75 as the “Historic King of Trails”. Volunteers from over 30 communities formed the Coalition for the purpose of marketing the Highway 75 corridor. The Coalition consists of counties, cities, chambers, EDAs, businesses and individual members. The mission of the Highway 75 Coalition is to develop community partnerships, to increase cultural and environmental awareness, and to promote attractions and opportunities that are available along Highway 75, the Historic King of Trails, and its surrounding corridor.

The Coalition meets on an annual basis to conduct business and has divided the corridor into three large regions. The regions are: Region 1-Winnipeg to Norman County, Region 2 - Norman County to Big Stone County and Region 3- Big Stone County to Iowa Border. As Regions the Coalition can more easily address the needs of the large geographic area. They have an annual membership drive, a brochure, website (www.highway75.com) and a 414 mile long “Fall Marketplace” where flea marketers, garage sales and other events are hosted by communities along the route.

The King of Trails is further divided into 5 sections to provide travelers information. King of Trails Route traverses four MnDOT Districts 2, 4, 7 and 8 and four Regional Development Organization areas.

Figure 1 is a general Map of the King of Trails Byway Corridor and show major geographic features. There are also major parcels of public land shown such as state parks, national refuges and national monuments. However, thousands of acres of public land exist in the form of wildlife management areas and waterfowl production areas that are not depicted on the map due to the size of the corridor.

Table 1 defines by County the King of Trails Regions and Sections, Regional Development Organization areas and MnDOT Districts.

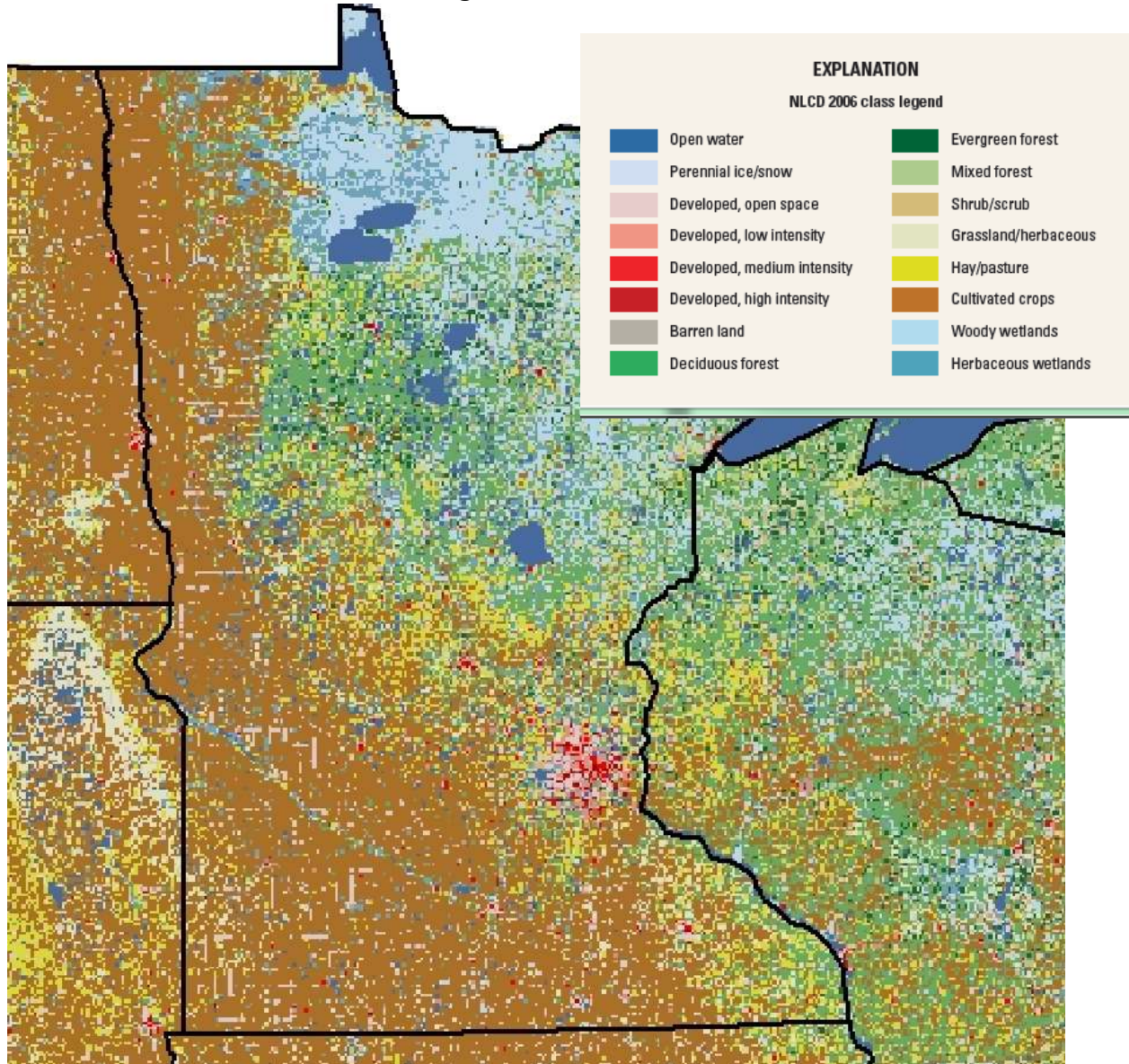
Figure 2 is a 2006 USGS map that depicts land use coverage.

A series of Maps of the Corridor Sections with the location of intrinsic qualities are located in Appendix 1.

Table 1: By County, the King of Trails Regions and Sections, Regional Development Organization areas and MnDOT Districts.

County	KOT Region	KOT Section	RDO	MnDOT District
Kittson	1	1	1	2
Marshall	1	1	1	2
Polk	1	1 -2	1	2
Norman	1	2	1	2
Clay	2	2	4	4
Wilken	2	3	4	4
Traverse	2	3	4	4
Big Stone	2	4	6W	4
Lac qui Parle	3	4	6W	8
Yellow Medicine	3	4	6W	8
Lincoln	3	5	8	8
Pipestone	3	5	8	8
Rock	3	5	8	7

Figure 2: 2006 Land Cover at 30 meter.



Source: <http://pubs.usgs.gov/fs/2012/3020/fs2012-3020.pdf> The 2006 National Land Cover Database (NLCD)

The King of Trails (US Highway 75) and the corridor follows the western border of Minnesota. The majority of the land use is cultivated crop with some pockets of development, hay and pasture, and public land.



B. TRANSPORTATION CHARACTERISTICS

Road authorities in the corridor include MnDOT (State and US highways), Counties (County roads and County State Aid System), City’s (city streets and Municipal State Aid Roads), MPO’s (Sioux Falls, Fargo Moorhead, and Grand fords and East Grand Forks), as well as short segments of roadway belonging to other jurisdictions, such as the National Park Service (at Pipestone Monument). Also to note are the Railroads that traverse the route.

The MnDOT Districts have shared information about Highway 75, coalition members and partners have identified transportation projects and issues within the corridor.

Highway 75 Corridor Safety: The road receives mostly farm and commercial traffic and is currently compatible with its vehicle use classification. The road shoulders are primarily gravel and not extremely good for bicycle travel. Highway 75 can accommodate some additional turning lanes to better serve facilities.

Both State and county jurisdiction roads have safety plans to address improved safety on roadways with a goal of Toward Zero Deaths. A recent example of a safety improvement project is at Polk County Road 21 and Highway 75 North of Euclid where there were T-Bone crashes every year. MnDOT installed flashing signs when traffic from opposite direction was approaching. The crashes have been significantly reduced since installation about one year ago. The road has an angle that blocks vision for 7 seconds when aligned with the windshield A-ARM bracket.

MnDOT maintains a database of traffic crashes. An overview of crashes by KOT Section is outlined in Table 2. By being cognizant of the crashes along Highway 75, coalition members may wish to participate in advocacy programs that are proven to reduce serious injury and fatal crashes – ultimately increasing safety for travelers..

Table 2. Crash history by Section on Highway 75 (June 2004 to October 2014)	Section 1	Section 2	Section 3	Section 4	Section 5
Number of Crashes	145	2261	373	290	598
Number of fatalities	4	12	5	6	11
Number of Serious Injury	10	22	8	15	5
Number involving a pedestrian	1	10	3	1	2
Number involving a bicycle	0	27	4	0	1
Number involving train	0	3	0	0	3

Source: MnDOT MnCMAT data

Coalition members and partners identified locations where safety improvements should be considered, some specific safety improvements were suggested by County Engineers (See Appendix 5 Work Plan Transportation – Safety and Access for all for more details on projects identified).

- KOT Region 1
 - Kittson County. Flooding near Humbolt; Hallock area, heavy commercial traffic road and substructure deterioration and turn lanes.
- KOT Region 2
 - Swift County. TH 75 and intersections at CSAH 33 and CSAH 12
 - Lac qui Parle County. Deer crossings at Big Stone National Wildlife Refuge and Wildlife Production & Management Areas; and fishing on the bridge by the Hwy 75 dam by the Big Stone National Refuge
- KOT Region 3
 - Yellow Medicine County (within the corridor) widen the shoulder and improve the in-slope on TH 59 south of YM CSAH 3.
 - Lincoln County. Lake Benton area multiple locations to upgrade guard rail or fill inslope to eliminate guard rail. TH 14 & TH 75 at both intersections to improve crossings for turning movements; enhanced speed warning signs for speed reduction; and TH 75 and Lincoln CSAH 9 west improvement need to address steep grade approach coming to TH 75 and blind intersection.
 - Pipestone County. No guard rail but high fill and steep inslope south of Pipestone Co CSAH 11 (east side of road) – add guard rail or fill inslope of TH 75
 - Rock County. Safety improvement needed at TH 75 and Dodge, Adams, and Barck Streets adjacent to the Luverne School District campus, when the students are going and leaving the school with the assistance of crossing guards

Roadside Amenities in the Corridor: The state has several travel information centers in or near the Highway 75 corridor. [Fisher's Landing](#) (US 2 mile marker 12 in Polk County), [Moorhead](#) (I-94, 1.27 miles east of TH 75), [Beaver Creek](#) (I-94 .5 miles west of MN SD line) [Adrian](#) (I-90 2.8 mile west of Adrian) and [Worthington](#) (TH 60, 2 miles south of Worthington) information centers are all managed by the Minnesota Office of Tourism.

There are also several affiliate travel information centers managed by local tourism and community groups. These include Pipestone, Montevideo, Ortonville and Thief River Falls. In addition Blue Mounds State Park, Pipestone National Monument and Big Stone National

Wildlife Refuge are located directly adjacent to the route for visitors. Several other parks and recreation areas are within a short drive from the route. Most of the communities have roadside parks within their communities that can provide as rest areas for travelers. These areas are compatible with the use they currently receive and can handle an increase in traffic.

The Minnesota Department of Transportation rest areas do not offer dump station services, however they do maintain a list of travel trailer [dump stations](#) by County.

Route Travel Restrictions: There are no travel restrictions along the route; therefore, no additional signage is needed. The route is rural in nature so if travelers are looking for this type of destination, an enjoyable travel experience would be had. Severe weather conditions (snow and rain) can cause challenges so travelers should be prepared to check road conditions in advance.

Travel ADT and Route Classifications: Highway 75 is a Minor Arterial and has an average annual daily traffic (AADT) ranges between 75 near the Canadian border to 32,500 in Moorehead. Traffic counts are larger through communities where there is both internal traffic as well as highways intersecting TH 75. Overall, 31% of the miles on the route have an AADT of 500-999; 39% is 1000-15000 and 18% is 1500-3000. The AADT is broken down into KOT Regions and in Table 3:

KOT Region 1: 133.6 miles long or 33% of the byway miles; 84% of the miles in this region has an AADT between 500 to 1500; 70% of the miles have HCAADT of 101 to 500.

KOT Region 2: 146.7 miles long or 36% of the byway miles; 87 % of the miles in this region have an AADT between 500 and 3000; 51% of the miles has an HCAADT between 201 and 500.

KOT Region 3: 122 miles long or 30% of the byway miles; 90% of the miles have an AADT of 500 to 3000; 96% of the miles have an HCAADT of 101 to 500.

Type of Transportation related work in Next 10 Years: Overall, MnDOT plans culvert and or bridge replacements, mill and overlays, thin overlays and resurfacing, and some work in the urban areas along the King of Trails over the next ten years. District 8 is likely to install edge line rumble strips in areas that currently don't have them and the highway has significant stretches of gravel shoulders, so bicycling can be a little tricky through the District. District 7 has indicated that the service life of the highway north of Luverne is low and it is possible an overlay would occur north of Luverne in the next 5-10 years.

Table 3: Miles of TH 75 with AADT and HCAADT, Total and by Region	Average Annual Daily Traffic (AADT)						Heavy Commercial AADT			
	<100	100-499	500-999	1000-1500	1501-3000	3000+	0-100	101-200	201-500	500+
	2.09	17.857	125.256	155.932	73.655	27.47	63.41	176.137	158.191	4.522
1%	4%	31%	39%	18%	7%	16%	44%	39%	1%	
Region 1	2.09	12.485	47.911	63.931	4.392	2.804	40.241	62.539	30.833	0
% of KOT total Miles	1%	3%	12%	16%	1%	1%	10%	16%	8%	0%
% of Reg 1 total miles	2%	9%	36%	48%	3%	2%	30%	47%	23%	0%
Region 2	0	5.372	34.36	47.411	47.516	11.999	20.106	49.474	75.247	1.831
% of KOT total Miles	0%	1%	9%	12%	12%	3%	5%	12%	19%	0%
% of Reg 2 total miles	0%	4%	23%	32%	32%	8%	14%	34%	51%	1%
Region 3	0	0	42.985	44.59	21.747	12.667	3.063	64.124	52.111	2.691
% of KOT total Miles	0%	0%	11%	11%	5%	3%	1%	16%	13%	1%
% of Reg 3 total miles	0%	0%	35%	37%	18%	10%	3%	53%	43%	2%
total	402.26	402.26	402.26	402.26	402.26	402.26	402.26	402.26	402.26	402.26

Pedestrian and Bike trail projects in the Corridor

The corridor extends from I-29 in South Dakota and North Dakota to TH 59. Within the corridor, trail plans by communities, counties and Regional Development Organizations have been developed. Most depicting projects within the corridor. Facilities for bicycle riders and pedestrians are an important component for visitors to use while visiting attractions along the King of Trails. The following Plans are in place with projects that may be eligible for TAP and or Legacy funding.

Region 1

[Crookston Minnesota Trail](#) The community is working on development of a Rivers and Trails Committee.

Region 2

[Fargo Moorhead Bicycle Pedestrian Plan](#)

[West Central Initiative Foundation - Trail Planning](#)

Region 3

2013 UMRDC Regional Trails Plan (July 2013) – [click here](#)

[Luverne Trail Planning](#)

[Pipestone Bicycle & Pedestrian Master Plan](#)

Lincoln County Trail Plan

City of Marshall / Lyon County Trail Plan

[Southwest Regional Development Commission Trail Plan update](#) 2014

Local Support

Below is a listing of county boards, city councils, and other supporting organizations along the route.

County Boards: Kittson, Marshall, Polk, Norman, Clay, Wilkin, Traverse, Big Stone, Lac qui Parle, Yellow Medicine, Lincoln, Pipestone and Rock Counties.

City Councils: St. Vincent, Humboldt, Hallock, Kennedy, Donaldson, Stephen, Argyle, Warren, Oslo, Angus, Euclid, East Grand Forks, Crookston, Eldred, Climax, Nielsville, Shelly, Halstad, Hendrum, Perley, Georgetown, Moorhead, Rustad, Comstock, Wolverton, Kent, Breckenridge, Doran, Wheaton, Graceville, Clinton, Ortonville, Louisburg, Bellingham, Madison, Dawson, Canby, Porter, Ivanhoe, Hendricks, Lake Benton, Pipestone and Luverne.

Additional organizations that support the King of Trails: Marshall County Historical Society; Wetland, Pines and Prairie Audubon Sanctuary; Project Breckenridge; Stephen Old Home Museum; Big Stone Historical Society; Hallock Area Senior Center; Hallock Lions Club; Prairie County Resource Conservation and Development; Argyle Rural Economic Development Authority, Inc.; Canby Rotary Club; Kennedy Jaycees; Minnesota's Historic Northwest; Aaron Peterson: Minnesota House of Representatives; Halstad Economic Development Authority; Halstad Lion's Club; Halstad Community Committee; Stephen Economic Development Authority; Lake Benton Convention and Visitors Bureau; Pipestone Chamber of Commerce; Travel Southwest; Canby Depot Visitor Information Center and Museum; Canby Visitor Information Center; Luverne Chamber of Commerce; Lincoln County Promotion and Tourism; and Breckenridge Chamber of Commerce.

C. INTRINSIC QUALITIES

Resources: The most significant intrinsic qualities of Highway 75 are outlined below. Specific points of interest that support each of these characteristics can be found in the narrative corresponding with the Section maps in Appendix 1.

Recreational characteristics revolve around the opportunities to enjoy the outdoors. The corridor provides a great variety of campgrounds that can be wonderful spots for enjoying outdoor activities. Campers might enjoy canoeing the Red River, rock climbing at Blue Mounds State Park or the numerous old quarries in the south and hunting, fishing, or biking throughout the corridor. Visitors may also take nature hikes to enjoy the vast open prairies to the north or the smooth undulating prairies and rock outcrops in the south. All are great locations to view and photograph Minnesota's native plants and animals. Birding is particularly popular in the corridor with both the Pine to Prairie and Minnesota River Birding Trail identifying popular locations. The Prairie Passage route also identifies locations to actively enjoy the prairie landscape.

Cultural characteristics revolve around the ethnic heritage of the people of the corridor. Native American, Scandinavian, German and Irish traditions have made a strong influence on the communities and their celebrations. An example is the Scandinavian Hjemkomst Festival in Moorhead.

The Scandinavian Hjemkomst Festival has continued to be a celebratory and educational event that connects thousands of people in the Red River Valley and beyond. Most importantly it helps to maintain traditions and a sense of who Scandinavians are – emigrants and their descendants from Norway, Iceland, Finland, Sweden, Denmark – living in America. Lifelong connections have been established over the years with Scandinavians abroad and across North America. The festival is held at the Heritage Hjemkomst Interpretive Center, which provides interpretation of the Hjemkomst Viking Ship, Hopperstad Stave Church Replica, Red River Valley Exhibition and hosts traveling exhibits in 7,000 sq. feet of temporary exhibition space. The interpretive center offers tours, lectures and festivals, and is host to residencies, performances and educational services. Heritage Hjemkomst Interpretive Center is a community resource for 150,000 people in the Fargo-Moorhead metro area and serves an average of 40,000 visitors a year from all over the world.

The most important **historic** characteristics are those related to the route itself. The Highway 75 corridor has been used since the 1800's as a commercial trade route between the Gulf of Mexico and Canada. Native Americans originally developed trails along this corridor for shelter, food gathering and trade. Early pioneers followed on foot and by oxcart on these same routes to market farm produce and to deliver mail as settlements spread across the prairie. In 1917 an attorney from Kansas City developed the idea of naming this trail the King of Trails and in 1918 a multi-state association was formed and a logbook was published with mile references, directions, and lodging and attraction recommendations. The route was signed with 16-inch yellow bands on wooden posts along the route with the letters K and T stenciled on them until 1926 when the U.S. Government assigned a road numbering system and the route became Highway 75. Other local history abounds in the corridor relating to agriculture, architecture and the culture of the people who live here.

The most important **scenic** characteristic is the wide-open space of the prairie. "Horizontal Grandeur" as Minneota, Minnesota author Bill Holm calls it, is the ability to see for miles and watch incredible sunrises and sunsets over the farm fields, prairies and small towns that dot the landscape. In his book called *The Music of Failure*, Holm says, "There, a man is the tallest thing for miles around; a few lonesome cottonwoods stand with leaves shivering by a muddy creek; sky is large and readable as a Bible for the blind. Old farmers say you can see weather coming at you, not like woods, where it sneaks up and takes you by surprise." Holm captures the essence of the vast open spaces along the entire Highway 75 corridor in his analogy. These views are accessible for everyone traveling the route.

The most important **natural** characteristic of the corridor is the prairie and its related features. The route crosses the north/south continental divide at two points (Clinton and Lake Benton) and the gentle rolling hills of the southern portion of the corridor surprise many travelers. This divide is the edge of two major watersheds where water flows north into Hudson Bay and south to the Gulf of Mexico. This natural feature has been utilized for the development of a vast wind energy industry in southwestern Minnesota. This portion of the route also has exposed rock outcroppings that are said to be some of the oldest exposed rock in the world. These areas of rock are a striking contrast to the flat rolling prairie. Unusual (to Minnesota) plant (prickly pear cactus) and animal species (5-lined skink) thrive in these mini eco-systems. Other animals find homes in the wetlands amongst the prairie. The tremendous birding along Highway 75 owes itself to the intersection of two major migratory flyways in the United States. More than 275 species of birds can be found along the corridor. Numerous birding festivals and trails assist avid birders each year in finding the birds they are looking for.

Archeological characteristics are documented and displayed at the numerous museums and universities along the route. Evidence of Paleo-Indian people of the grassland, who hunted large game such as the bison, has been documented in this area. Artifacts, burial mounds and local history tell pieces of the story about those who used to live here.

Significance: The history of the route is the most outstanding resource. It is of state significance as one of the first designated transcontinental highways in the Minnesota and the United States. The other characteristics are supporting in nature and have regional or statewide significance. The most important supporting characteristics would be those related to the prairie. The prairie eco-system is limited today to less than one percent of the original prairie that once stood in this Midwestern area. Highway 75 is blessed with numerous areas of public land which have preserved or restored the prairie and its recreational, scenic, and natural characteristics.

Character of the Route: The route conveys a sense of vast open spaces, strong ethnic heritage and the dogged determination of those who choose to live on the wide-open prairie. The corridor allows a traveler to experience the rawness of the prairie. Exposed fields of corn, soybeans, sugar beets, sunflowers, and wheat are so vast a visitor will be awed to think those same fields were broken by hand and horse. Small stretches of remaining prairie will remind a visitor of the preciousness of our environment and how important it is to protect what little prairie there is left. The snow and cold of winter will remind a visitor of the difficulties Native Americans and pioneers would have faced without the conveniences of today. Celebrations and visits to local attractions can fulfill a complete understanding of the history of the people and the area.

D. VIEWSHED MAPPING/PHOTOS

Significant Viewsheds: Images are included with this document in Appendix 5. These images are of the attractions, landscape, and events located along the route.

Relationship between the roadway characteristics and the scenery:

The roadway flows along the gradual hills and flat prairies, farm fields and small towns allowing the traveler to be subtly integrated with the open landscape. The sprawling farm fields, elevators and agricultural businesses; rich architectural heritage of buildings built with local stone; business and streets named after local residents, explorers or local resources; and the large variety of parks, recreation areas, museums and other attractions easily communicate the history and values of the region to the traveler.

E. BYWAY ORGANIZATION / FUNDING

The International Historic Highway 75 “King of Trails” Coalition will continue to manage and coordinate initiatives along the proposed byway designation. The Coalition has been meeting since 1996 and has worked with the Minnesota State Legislature to designate the route as the “International Historic Highway 75 King of Trails” in 2001. Since that time communities have purchased and installed their own signs along the route (with MnDOT permission). The Coalition’s mission is to develop community partnerships, to increase cultural and environmental awareness and to promote attractions and opportunities that are available along Highway 75. The Coalition manages the large geographic area by dividing into three Regions. Each Region has delegates. The overall corridor elects one set of officers. The marketing contact has been designated as the Pipestone Chamber of Commerce. They have agreed to respond to requests for information and are able to send materials to interested inquiries.

The names of the organizations along the Highway 75 corridor that manage functions and /or partner or are proposed to partner with are listed below:

- Minnesota Department of Natural Resources
- U.S. Corps of Engineers
- U.S. Fish & Wildlife Services
- National Park Service
- Minnesota Historical Society
- Minnesota Office of Tourism
- The University of Minnesota’s Northwest & Southwest Sustainable Development Partnerships
- Historical Societies
- Chambers of Commerce and Convention & Visitors Bureaus
- Cities
- Counties
- Minnesota Department of Transportation
- Regional Development Organizations
- Birding Trail Groups
- Higher Education
- Southwest, West Central, and Northwest Initiative Foundations

The Coalition is made up of individuals who are members of or have contact with many of the above-mentioned organizations. Through an annual membership drive and a newsletter sent out several times a year, the Coalition will seek to re-establish these relationships and update organizations of activities planned for the corridor.

The Coalition will continue to discuss the development of byway ambassadors. The ambassadors would be a group of byway volunteers that could travel to the sites along Highway 75 and educate and provide resources to the sites about the rest of Highway 75 so site staff would be more knowledgeable about the corridor. The Coalition will continue to make contacts with managing organizations and establish ongoing relationships to accomplish the goals of the corridor. If visitors have more opportunities to gain knowledge about the corridor and its history, culture, and natural environment, they will have a more memorable and better understanding of the corridor.

Existing partnerships along the proposed route include the Southern Minnesota Tourism Association, Chambers of Commerce, Convention & Visitors Bureaus, trail planning organizations, county fairs, MnDOT, Minnesota Office of Tourism, Department of Natural Resources, historical society boards, and local schools and businesses. Coalition members are also members of these organizations and work to ensure that these organizations are aware of the King of Trails and encourage them to include information about the route in their offices and publications.

The King of Trails Coalition plans to manage funds for daily operations through memberships, grant donations, contributions from local and other interest groups and in-kind donations. Major funding will occur on a project-by-project basis.

Tourism and Marketing.

Table 4 is a list of Chambers of Commerce, Convention and Visitors Bureaus, and tourism associations that operate along the route.

Key Sites: In addition to those tourism groups identified above, key partners in marketing the route are: travel information centers, museums, state parks, the Pipestone National Monument, Big Stone National Wildlife Refuge, hotels, campgrounds, specialty shops and festival planning organizations. The Coalition will need to provide each location with marketing materials and other resource information about the corridor so their staff will be knowledgeable about attractions and events along Highway 75. The King of Trails Coalition may ask that these key sites distribute general information about the byway, provide referrals to the byway website, and track or share names and addresses of those inquiring about the byway. Partners may be asked to incorporate King of Trails information into their own tourism literature.

Table 4: Chambers, CVB, and Tourism Associations along the King of Trails

Chambers of Commerce				
Breckenridge	PO Box 108, 420 Nebraska Ave.	Breckenridge	MN	56520
Canby	101 S. Olaf Street	Canby	MN	56220
Crookston	118 E. Fletcher Street	Crookston	MN	56716
Hallock	PO Box 700	Hallock	MN	56728
Big Stone Area	41 NW 2 nd St	Ortonville	MN	56278
Luverne	102 East Main	Luverne	MN	56156
Madison	PO Box 70	Madison	MN	56256
Moorhead	202 1st Avenue North	Moorhead	MN	56560
Pipestone	PO Box 8, 117 8th Ave. SE	Pipestone	MN	56164
Warren	423 North Main Street	Warren	MN	56762
Wheaton	203 8th Street North	Wheaton	ND	56296
Convention and Visitors Bureaus				
Fargo-Moorhead	PO Box 2164	Fargo	ND	81507
Pipestone	PO Box 8, 117 8th Ave. SE	Pipestone	MN	56164
Lake Benton	Box 204	Lake Benton	MN	56149
Western MN Prairie Waters	323 West Schlieman Ave	Appleton	MN	56208
Tourism Associations				
Travel Southwest MN		www.travelsw.org		
Southern MN Tourism Assn	115 E Hickory Suite 403 PO Box 286	Mankato	MN	56002
Heartland Tourism Assn	1311 N Duluth	Thief River Falls	MN	56701
Visit Northwest MN	115 S Main	Warren	MN	56762

Marketing of the Byway

No single long-range plan has been completed for the route. Many areas of the route, however, have multi-year marketing strategies for their areas. Regional convention and visitors bureaus (Fargo-Moorhead CVB, Western Minnesota Prairie Waters CVB), chambers of commerce (Pipestone Chamber & CVB, Luverne Chamber) and other marketing and promotion organizations (Project Breckenridge, Visit Northwest Minnesota) all have marketing plans.

In 2003 the University of Minnesota's Sustainable Development Partnerships completed a tourism report for Highway 75. It was sent to community leaders within the Highway 75 area including county commissioners, chambers of commerce, city officials, businesses, volunteers, mayors and many other community leaders along and connected to Highway 75. The report

documented the areas that needed to be improved within individual communities along the route. These results continue to serve as the basic marketing goals for the King of Trails Coalition.

During the spring 2014 KOT meeting, it was recognized by the membership that new members were needed to revitalize the Byway coalition and position itself for the future.

During 2015-2016, the Marketing Plan will be further refined. The following items were identified by the Coalition to address the needs identified in the report as well as needs identified during the 2014 Planning process. Appendix 5 is a prioritized Work Program and addresses these needs.

Revitalize Coalition through New Membership: The coalition was formed in 1996 and the original membership is growing older. New members are needed to revitalize, bring innovative ideas, and bring new talents and energy to the coalition.

Tourist Information: Development of a common survey tool to address inconsistencies of how visitor information is collected.¹

Camping Facilities: There is a need for more or improved camping facilities.

Mini-trip Packaging: There is an interest for day and weekend trips that encourage families to visit their local communities and experience the historic events that take place, visit museums, hike the trails, go birding and bring the history alive for their children and adults.

History of Highway 75: Create a living history through a network of volunteers and local students or citizens; trained to visit and write or record the history of local people who have firsthand knowledge. The history needs to be produced in a manner that would save it for future generations.

Golfing. There are many golf courses along the route that could be identified and marketed through the website and specialty brochure development.

Trails (Birding, Biking, Walking, Snowmobile, and OHV): Several types of trails exist within the corridor. The KOT coalition will support the improvement of trails and let visitors know where they are and what features they have. The Agassiz Audubon Society is located in Region 1 of the KOT and has developed a following of persons interested in birding and has a Facebook presence. Pairing with existing birding organizations, local bike trails groups, and snowmobile trail organizations along the corridor will help bring recognition to both the KOT and the birding groups.

Unique Events and Current Events. Continue to creative things that bring attention to the

¹ In 2003, survey respondents said that 50% of the communities that responded have sign-in books. They weren't always at an appropriate place within the community. Survey respondents said that 75% of the information they reported was through observation within the community and the traffic patterns.

Highway 75 King of Trails. Contact local radio, TV and newspapers to advertise and report on these events. Create new interest in events that have been taking place annually like the Fall Marketplace or new events such as the Civil War re-enactment at Pipestone.

Multi-Generational Family Friendly Areas: These market family friendly areas and events would be accessible for parents with strollers, people on crutches, walkers or in wheelchairs.

Shopping: is a main activity of tourists that visit Minnesota. There are many unique shops along Highway 75 that could be marketed together.

King of Trails Magazine: The Highway 75 Coalition created a travel magazine for tourists and visitors that will highlight activities along the Highway 75 route. Originally a paper version with ads and developed and made available through CVBs, chambers, visitor centers, museums and other King of Trails member locations; a second version will be web based with the ability to update on an annual basis.

Activity Book: Creation of an activity book for school children to be used in conjunction with their books when studying Minnesota history. This book would be focused on historic events, sites, community events, and other important activities that have or are taking place along Highway 75.

Informational Media: The Highway 75 Coalition will collect information to create a sharable media (DVD, video streaming, etc). The purpose would be to educate families as they travel.

Website: The Coalition currently maintains a website. The site requires regular updates and more detailed information for the visitor.

Information Distribution: Information about the King of Trails will be available at key sites including the chambers of commerce and CVBs, travel information centers, museums, state parks, Pipestone National Monument, Big Stone National Wildlife Refuge, hotels, campgrounds, specialty shops and festivals. The Coalition will need to provide each location with marketing materials and other resource information about the corridor so their staff will be knowledgeable about attractions and events along Highway 75. The coalition will continue to expand their existing marketing partnerships with these key stakeholders in the corridor to increase the visibility of the King of Trails.

The Coalition already has an established relationship working with the Pipestone Chamber and CVB. The Coalition uses their phone number and address on all publications as the point of contact for information about the King of Trails. The coalition also maintains a website (www.highway75.com) for the purposes of directing travelers along Highway 75.

Research other websites to include intrinsic qualities of the corridor, such as <http://www.roadsideamerica.com/>.

Other Corridors: Other corridors that overlap with the King of Trails include: Prairie Passage,

Pine to Prairie Birding Trail, Minnesota River Valley Birding Trail, Minnesota River Valley National Scenic Byway, Waters of the Dancing Sky Scenic Byway, and Laura Ingalls Wilder Highway. The King of Trails will work to cross promote these corridors and share information, resources and promotions avoiding all possible conflicts with other promotions.

F. LAND USE PLANNING/CORRIDOR MANAGEMENT PLANNING

Regional Planning Tools: Local and regional planning tools used along the corridor are: county and city zoning codes, subdivision ordinances, A-1 zones (limited agriculture to protect the significance of the area), historical preservation ordinances and trunk highway billboard rules. Most cities and counties have land use plans and ordinances.

Federal Billboard Regulations: All MnDOT Districts comply with the federal billboard regulations. Local units of government have been asked if they have outdoor advertising ordinances. Many have indicated that they do have ordinances in place. Units of Government that do not have ordinances in place have been provided the information regarding Outdoor Advertising on Scenic Byways and the Highway Beautification Act.

Predominate Types of Land Use: Land use along the Highway 75 Corridor is primarily agricultural; other land uses along the corridor include grazing, forestry, wind farms, parks, wildlife, industrial, commercial, residential, public, conservation reserve acres and institutional. There are a few potential threats along the highway corridor. The threats include water pollution, increased litter, lack of historical preservation, damage to ecologically or archaeologically sensitive areas and general wear and tear on facilities.

Corridor Management Plan: There is no comprehensive corridor plan for the Highway 75 corridor. Numerous plans exist that apply to portions of Highway 75 including: state and federal area land management plans, county and city comprehensive plans, Minnesota River Basin Comprehensive Recreation Guidance Document, Land of the Dancing Sky Comprehensive Plan, Waters of the Dancing Sky Corridor Plan, River Stories: A comprehensive plans for the MN River Valley Scenic Byway, county and city zoning plans and other local documents will help manage and protect resources along the route. These plans and the increased awareness of the route and it's attractions can help promote good stewardship of the resources that are found along Highway 75.

Scenic Byway Designations:

Special Designation: In 2001 the Minnesota Legislature designated the King of Trails. Portions of the route are contiguous or intersect with the Minnesota River Valley National Scenic Byway and the Waters of the Dancing Sky Byway.

Minnesota Scenic Byway Designation: The King of Trails was designated a Minnesota Scenic Byway in 2004.

National Route Designation: The King of Trails Coalition would like to seek national route designation at a future time.

Potential Enhancements:

The Coalition has discussed improvements they would like to see completed along the highway corridor. They are: updated Scenic Byway signage, additional kiosks, pull-offs at interesting points of interest, a new Highway 75 Museum to give detailed historical information, increased community marketing cooperation, making communities more inviting to visitors by cleaning them up and offering hospitality training to help service businesses to be more pleasant and helpful to visitors.

Existing short and long term plans for improvements include: update brochures and website; new web friendly travel guide; improve fall market place events (one day events where with the same day and hours; hold meetings with communities and educate them on the benefits of byway designation, hospitality and membership; better way finding signage; enhancement of pedestrian / bike trails; designation of canoe trails; and improvements at Big Stone National Wildlife Refuge, Laura Ingalls Wilder Trail, Hole in Mountain County Park, Casey Jones Trail, and the Minnesota River Valley State Trail.

KOT signage - Erecting and Maintaining Signs: MnDOT has the responsibility of erecting and maintaining the signs along the King of Trails. In 2002, MnDOT District 8 coordinated with MnDOT District 7, 4 and 2 and oversaw the placement and installation of the KOT Route Identification signs on the community entrance / population signs. The KOT By-way has identified the need to replace the signage in CY 2015-2016 and is identified in the Planning and Marketing Work Program in Appendix 5.

Kiosks and road pull offs. 2016-2020: Identify locations for additional informational Kiosks and pull off locations at points of Interest.

Highway 75 Museum to give detailed historical information. This is a long term project.

Community Hospitality awareness (company is coming). This is seen as an on-going endeavor and includes several components: marketing coordination, visual attractiveness and appearance of community, offer hospitality training help service businesses to be more pleasant and helpful to visitors

ANALYSIS OF POTENTIAL IMPACTS

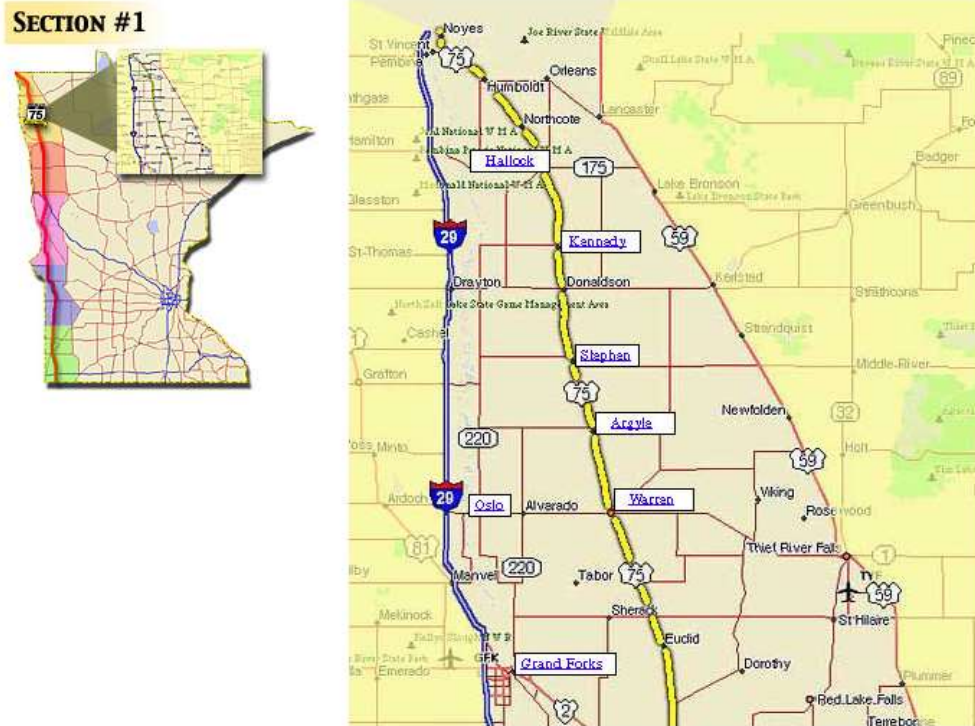
Positive Impacts: Positive impacts of the designation are: more traffic on the corridor, economic benefit for the communities, increased use and knowledge of local attractions, opportunities to expand or start new businesses, additional recognition for attractions and communities, inclusion in state marketing plans, increased community pride, new resident attractiveness, recognition of tourism as an economic generator in the area, creation of a stronger link between communities and provision of a catalyst for improving the social and cultural benefits for local people and visitors.

Adverse Impacts: Adverse impacts of the designation are: more traffic, more trash, more volunteers needed to help with managing sites, damage from visitors to culturally or ecologically sensitive areas, vandalism, trespassing, service businesses could become overwhelmed and would have to change business hours increasing the costs to manage that business, need for more recreation facilities and increased traffic and safety concerns for pedestrians, agricultural traffic and recreational drivers.

Appendix 1: KOT Section Maps and Intrinsic Qualities



Section #1: Maps and Intrinsic Qualities



	Birding	Camping	Fishing	Golf	Hunting	Lakes-Rivers nearby	Nat'l Park/Monument/Refuge	Regional/Provincial Park	State Park	Tourist Information	Trails (bike, horse, hike)	Wildlife	Winter Sports	Snowmobile Trails
Recreation														
Winnipeg, Manitoba Canada	●	●	●	●		●		●		●	●	●	●	●
Emerson, Manitoba Canada	●	●	●	●		●				●	●	●	●	
Hallock, MN		●	●	●	●	●		●		●	●	●	●	
Kennedy, MN	●	●						●	●	●			●	
Stephen, MN	●	●	●	●	●	●		●	●	●	●	●	●	
Argyle, MN	●	●	●		●	●		●	●	●	●	●	●	
Warren, MN	●	●		●	●			●	●	●	●	●	●	
Oslo, MN	●	●	●		●	●				●	●	●	●	
Grand Forks, ND	●	●	●	●	●	●	●		●	●	●	●	●	
Red Lake Falls, MN	●	●	●	●	●	●	●	●		●	●	●	●	

Section #1: Attractions and Points of Interest:

Winnipeg, Manitoba Canada www.destinationwinnipeg.ca Look for...The Forks National Historic Site, Old Saint-Boniface French Quarter, Historic Exchange District, Manitoba Museum, Winnipeg Art Gallery, Assiniboine Park, Imax Theatre, Children's Museum.

Emerson, Manitoba Canada Look for...The birthplace of the Royal Mounted Police, Fort Dufferin, Trans Canada Trail.

Lake Bronson State Park - Lake Bronson From the observation tower in the park, view the prairie and aspen-oak forests or watch for deer, sharp-tailed grouse, moose and sandhill Cranes. The South Branch of the Two Rivers fills Lake Bronson. The lake, which is actually a reservoir, offers visitors swimming, fishing, boating, great camping, and a tranquil backdrop for the picnic grounds. For those who prefer a prairie experience, one of the campground areas allows camping on the prairie. Trails for hiking, biking, cross-country skiing, and snowmobiling provide visitors with great recreation choices.

Hallock, MN Look for...Gilbert Olson Park, nearby Kittson County Museum at Lake Bronson.

- a) **Gilbert Olson Park** - Hallock, is located on the south branch of the Two Rivers, Facilities include canoeing, fishing area" swimming, playground area, basketball court and volleyball. The park is adjacent to Hallock's nine-hole, grass greens golf course and also to the south branch of the Two Rivers for fishing and canoeing. There are 48 campsites, with electrical hookups, showers, flush toilets, and dump station. In the winter snowmobiling and snowshoeing are fun activities'
- b) **Horseshoe Park** - Hallock, the park isolated near downtown Hallock. Facilities include a Picnic shelter, playground area, electrical hookups, flush toilets, dump station.
- c) **Hallock Golf Course** - Hallock, is located on 902 7th Street SE 9 hole glass green course, New clubhouse facilities, close to swimming pool, cart and club rent available.
- d) **Kittson County Fair** - Hallock, Take place the 2nd Week in July. Activities include a carnival, petting zoo, demo auto racing, livestock show, grandstand entertainment and stock car races.
- e) **Hallock City Pool** - Hallock, is located in the city park. It is open from June until August during the summer.
- f) **Kittson County Trail** - Hallock, Groomed trail runs throughout Kittson County and connects with Lake Bronson State Park, Pelan and McTrail System Trails. Trail features Red River flat prairie and wooded wilderness with deer, moose and other wildlife. Access to good un-groomed riding.

Kennedy, MN www.ruralaccess.net/kennedy Look for...Beautiful community flower gardens, and Kennedy baseball field. **Kennedy City Park** - Kennedy, the city park has a picnic shelter, electricity, playground, and water access.

Stephen, MN www.stephenmn.com Look for...Old Home Town Museum, canoeing on Tamarac River.



- a) Old Home Town Museum - Stephen, artifacts, exhibits, harness shop display, antique machinery, equipment and tools.
- b) Marshall County Park of Florian - Stephen, the county park has a boat launch, fishing, sailing, canoeing, paddle boat rental, swimming, biking, skiing, county snowmobiling, snowshoeing, lifeguards, spiral slide, picnicking, playground, golf, basketball, backboards, volleyball, ball fields, ice fishing, snacks and food stands. The park also has camping, electrical & water hook-ups, showers, flush toilets, dump station.
- c) Pioneer Park - Stephen the park has fishing, picnic shelters, playground area, tennis, basketball, and ice skating and hockey. Groceries are close by.
- d) Northwest Acres Campground - Stephen, the campground has playground equipment, pool, picnicking, grills, ball field, river nearby, and golf course a block away. Restaurant and snacks are close by. Trailer/Camper hookups to electrical, water, and sewer are available. Bathrooms, showers, and handicap accessible are available.
- e) Riverside Golf Course - Stephen, public course, 9 holes, grass greens, Par 34, cart & club rental, pro shop and clubhouse. Campground and swimming pool are close by.
- f) Stephen Swimming Pool - Stephen, outdoor pool - Open Swimming 1-5 p.m. 7-9 p.m. Kiddie pool, lessons, private lessons, water aerobics, pool parties, and snacks, Campground and golf course are close by.
- g) Wetlands, Pines and Prairie Audubon Sanctuary - Stephen, sanctuary activities include picnicking, summer & winter nature interpretation by appointment. 40 Acres of Wildlife habitat & fields on the Ancient Lake Agassiz beach ridge. Operated by the Agassiz Audubon Society. A variety of educational programs and field trips are provided by appointment.
- h) Tamarac Mac – Stephen, a carved figure, named in honor of Stephen’s first settler. The figure was carved by a chain saw artist on a spruce tree in Stephen. The statue is currently housed indoors.



Argyle, MN www.ci.argyle.mn.us Look for...Argyle Depot Museum, nearby historic Old Mill State Park (12 mi. E), Kurz Memorial Lions Park with unique railroad car walking bridge.



- a) John Kurz Memorial Park - Argyle, facilities include two picnic

shelters, grills, playground, horseshoes, volleyball, fishing, pioneer house, covered bridge/walkway, Water, electrical, and outdoor restrooms. Groceries, Farmer Dell Restaurant, and Tater's Café are close by.

- b) Island Park - Argyle, is located at the intersection of 5th Street and River Street Picnic shelter, grills, playground, horseshoe and fishing. Groceries, Farmer Dell Restaurant and Tater's Café close by. Campsites with water and electrical hook-ups, and portable toilets are available.

Old Mill State Park - The park is located 17 mi. NW of Warren, and 13 miles east of Argyle. The park features summer nature interpretation, enclosed picnic shelter, swimming, canoeing, fishing, biking trails and playground equipment. Historical sites include a flour-grinding mill, suspension bridges, sliding Hill in the park. The park also has modern camping with showers, flush toilets, 10 electric & water hookups and primitive camping sites.

Warren, MN Look for...Famous UFO car at Settlers Square/Marshall County Museum, Sky Vu Drive-In Theater (May-Oct.).



- a) Settlers Square, Marshall County Museum - Warren Historical Village featuring eight store fronts depicting an 1880 street. Main building houses many pieces of antique farm machinery, On display, the UFO Sheriffs car of Marshall County.
- b) Marshall County Fair - Warren, held in mid-July for five days Wednesday through Sunday with a parade on Wednesday to kick off events. Amateur talent show, carnival, grandstand shows, demolition race, derby, bingo, Settler Square historical activities, 4-H and craft exhibits. The fair is located near campgrounds, park, swimming pool, basketball & tennis courts.
- c) Warren Golf Course - Warren, is located on 8th & E. Johnson Ave. The course is a public course, 9 holes, clubhouse and is located near campgrounds.
- d) Warren City Pool - Warren, is located near the corner of town and is open M-F 2-5 pm and 7-9 pm, Sat & Su 1-5 & 7-9 pm. It is located in the City Park, near campgrounds.
- e) Holiday Park and Campground - Warren, the park and campground have extensive playground equipment, swimming pool, baseball/softball, tennis courts, volleyball, horseshoe, golf, picnicking, snacks, and groceries. It is located near a golf course and fairgrounds; it also has Campground, electrical hookups, sewer and water hookups, flush toilets, showers and a dump station.
- f) Centennial Park- Warren, features a small picnic area and gazebo.
- g) Island Park - Warren, features a picnic area" small playground, and a basketball court.

- h) Sno-Cat Riders, Inc. - Warren, is a local snowmobile organization.
- i) Mc Trail System - Warren, trails connect with Wapiti and Kittson Trails. Groomed trails through the wide open, flat and fast Red River Valley in the parallel snow-filled ditches of McCrea and six other townships.

Oslo, MN Look for...War Relic Museum, Red River boat landing with campground.

Grand Forks, ND www.grandforkscvb.org Look for...Heritage Village at North Dakota Museum of Art, historic Empire Arts Center, Grand Forks Air Force Base, Mura Museum and historic Campbell House, Ralph Engelstad Arena, tours of University of North Dakota Aerospace aviation complex.

Red Lake Falls, MN www.redlakecounty.org Look for...Historic Red Lake County Courthouse, paved trails, Voyageur's View Tubing on the Red River.

East Grand Forks Heritage Village - East Grand Forks, festival is the 2nd weekend in August.

Shelly, MN - Norman County Historical Society historic site features an early school house and many exhibits and articles from Norman County's past.



Section #1 Events

February

- Le Festival du Voyageur Winnipeg, Manitoba, Canada

May

- Winnipeg Wine Festival Winnipeg,

June

- International Film Festival Winnipeg,
- Back Home Days Hallock, Minnesota
- Meet Your Neighbor Day Argyle, MN
- Jazz Festival Winnipeg, Canada
- International Children's Festival Winnipeg,

July

- Taste of Manitoba Winnipeg
- Kittson County Fair Hallock, Minnesota
- Celebrate Kennedy Kennedy, Minnesota
- Marshall County Fair Warren, Minnesota
- Summerfest Stephen, Minnesota
- Folk Festival Winnipeg, Canada

August

- Heritage Days East Grand Forks, Minnesota
- Folklorama Winnipeg, Canada

September

- King of Trails Market Day Kennedy, Stephen, Argyle

Section #2: Maps and Intrinsic Qualities



Recreation	Birding	Camping	Fishing	Golf	Hunting	Lakes-Rivers nearby	Nat'l Park/Monument/Refuge	Regional/Provincial Park	State Park	Tourist Information	Trails (bike, horse, hike)	Wildlife	Winter Sports	Snowmobile Trails
Crookston, NM	●	●	●	●	●	●	●	●		●	●	●	●	●
Climax, MN	●		●	●	●	●					●	●	●	
Nielsville, MN		●			●									
Shelly, NM			●			●								
Halstad, NM			●		●	●						●	●	
Hendrum, MN		●	●			●								
Georgetown, MN	●		●		●	●				●		●	●	
Moorhead, NM	●	●	●	●		●		●		●	●	●	●	
Fargo, ND		●	●	●		●				●	●	●	●	

Section #2: Attractions and Points of Interest:

Crookston, MN www.visitcrookston.com Look for... Polk County Museum, historic downtown walking tour, world's largest oxcart, birding at Glacial Ridge Nature Conservancy & Rydell National Wildlife Refuge, childhood home of movie stars Olivia de Havilland and Joan Fontaine.



- a) Minakwa Golf Club - Crookston, is located on 901 Fisher Ave, PO Box 633. It is a private course, 9 holes, par 36, and has glass greens and is open to "out-of-town" persons for green fees.
- b) Crookston Polk County Museum - Crookston, churches, neighborhoods. Closed in winter months, but will open for tours and appointments. See Crookston's Historic downtown business district.
- c) Hoven Lane Park - Crookston, is located on Hoven Lane & Radisson Rd. Facilities include a picnic area, playground and basketball. Skating rink, warming house and rink lights.
- d) Schuster Park- Crookston, is located on Memorial Dr. & Locken Blvd. Facilities include a picnic area, playground equipment, tennis court, and basketball court.
- e) Wildwood City Park- Crookston, the park features a sheltered picnic, cooking areas, and playground area.
- f) Central Park- Crookston, facilities include a boat landing, fishing area, playground area" swimming pool, and a movie theatre within two blocks. The campground is within easy walking distance of downtown and has 16 units with electrical hookups, separate showers and flush toilets. A dump station is near the arena.
- g) Eugene Field Park - Crookston, is located on Minnesota and Woodland Ave. Facilities include a picnic area, playground area, and basketball court.
- h) Driftbusters Trails - Crookston is located on Medicine Shoppe, 211 N. Main Crookston. The snowmobile trail connects Crookston with the Riverland Trail System. The trail winds along Polk County Road 11 to the Red Lake County Boundary.
- i) Crookston Gun Club - is located 2 miles north of Crookston on Hwy 5 & 1/4 mile west on Twp. gravel. The rifle range is 4 100 yd with benches; 3 Trap Houses; Pistol Range, 12 targets 7.5 25 and 50 yards; Pin Table & Metallic Knock-Downs, Sporting Clays Range with 10 stations.
- j) Crookston Community Pool - Crookston, is located on 320 E. 4th Street. Olympic size indoor pool and diving tank with sun deck. Winter hours-- Open swimming M & TH 6:30-7:30 p.m., W & Fri 6:30-8:00 p.m., Sat & Sun 1:00-3:00 p.m. Closed Tuesdays. Summer hours--M through Sun. 1:00-3:00 p.m., M though Fri. 7:00-8:130 p.m. The pool is closed on Tuesdays.
- k) East Polk County Historical Center - Crookston, Guided tours every afternoon from 1-4 p.m. except Mondays. Restored 100 yr old, ten room house, full of memorabilia from years ago.



Pankratz Memorial Prairie - Located 6 miles E of Crookston on Hwy. 2; 1.5 miles S on County Rd. 46; E on gravel rd. to parking lot. The prairie has two units at 468 & 452 acres.

Pembina Trail Scientific & Natural Area- Located 9 miles west of Mentor on county road 45. The area is 2360 acres.

Tympanuchus Wildlife Management Area -Located 3 miles east of Harold's Station on county rd. 45. The area has reintroduced greatest prairie chickens and is a Prairie Passage site.

Chicog Wildlife Management Area - Located 11 miles SE of Crookston on MN Hwy 102 to Melvin; 1 mile S on township road. The area has 1,624 acres and is a Prairie Passage site.

Climax, MN Look for... Beautiful Brentwood Golf Course, Sandhill Settlement Historical Society, named after popular chewing tobacco, fishing, birding and fertile agricultural region.

Nielsville, MN Look for...Camping, hunting.

Nielsville City Park - is locate by the city water tower and open until 10:00 P.M. Facilities include a playground area and picnic area.

Shelly, MN Look for...Red River History Museum, old church on historic register, nearby historic Zion Church in rural Shelly.

Shelly City Park - has a playground, picnic tables, shelter, tennis court, and ball diamond

Halstad, MN www.halstad.com Look for...Fabulous catfishing on the Red River, birthplace and childhood home of band leader Skitch Henderson.

Halstad Riverside Park - located near the Red River, activities include biking, boat launch, power boating, fishing, hiking, picnicking, ski touring, snowmobiling, and snowshoeing.

Ada Pioneer Village - Ada, the village features ten historic buildings, as well as a new log historical museum, containing exhibits and articles from Norman County's past. Genealogy information is located in the museum.

Hendrum, MN www.rrv.net/hendrum/ Look for...Great fishing and boating on the Red and Wild Rice Rivers, free land available (restrictions).

Hendrum Community Park/Campground - located ~ ½ mile East of Hendrum on Co. Rd, 25. The park has picnic tables, shelter, playground area, ball park, bleachers and

campsites with electrical hookups, flush toilets, water hookups and RV campsites. There is a boat launch on the Red River with groceries, restaurant, gas and fuel stations nearby and is noted for catfish fishing on the Red River of the North just west of the



city, and other species in the Red and Wild Rice rivets north and east of the city.

Perley City Park - Perley, the park has Picnic tables, shelter, tennis court and a playground area.

White House - Kragnes, an area landmark, the White House is on the National and State Historic Registers. The 12-acre estate, with a house, chapel, bridal cottage and party barn, is available for weddings, meetings and parties.

Western Minnesota Steam Threshers Reunion - Hawley, held every Labor Day weekend, this popular event covers more than 200 acres and features rare and operational steam, gas and horse powered equipment, including an authentic steam railroad, Food and craft demonstrations round out the entertainment.

Buffalo Ridge State Park -Moorhead Trails wind through one of Minnesota's finest and largest remnant prairies. Listen for bobolinks, prairie chickens, marbled godwits and upland sandpipers. A picnic area, swimming area and campground are located in the hardwood forest along the Buffalo River.

Georgetown, MN Look for...One-time trading post and transfer point for the Hudson's Bay Company, fishing on the Red River, Frenchman's Bluff.

Moorhead, MN www.fargomoorhead.org Look for...Recreation on the Red River, Hjemkomst (Norwegian) Center with Viking Ship and Hopperstand Stave Church Replica, Berquist Pioneer Cabin, S.S. Ruby pontoon riverboat rides and canoe/kayak/bike rental.

Fargo, ND www.fargomoorhead.org Look for...Recreation on the Red River, Bonanzaville US A historic village, Fargo Air Museum, Red River Zoo, Plains Art Museum, Children's Museum at Yunker Farm, Roger Maris Museum.

Section #2 Events

February

- Ice Buster Days Crookston, Minnesota

March

- Fargo Film Festival Fargo, North Dakota
- Red River Sled Dog Derby Halstad, MN

June

- Small Town Saturday Night Climax, Minnesota
- Catfish Days Halstad & Hendrum, MN
- Norman County Fair Ada, Minnesota
- Scandinavian Hjemkomst Festival Moorhead, Minnesota

July

- Polk Co. Fair Fertile, Minnesota
- Summerfest Hendrum, Minnesota
- Clay County Fair Barnesville, Minnesota

August

- Oxcart Festival and Classic Cruiser Car Show Crookston, Minnesota
- Pioneer Days West Fargo, North Dakota
- Fargo Blues Festival Fargo, North Dakota

September

- Pioneer Days/Harvest Festival Crookston, Minnesota
- Fall Festival Halstad, Minnesota
- King of Trails Marketplace Crookston, MN

October

- United Way Chili Cook-Off Crookston, MN

December

- Winter Wonderland Crookston, Minnesota
- Santa Day Halstad, Minnesota

Section #3: Maps and Intrinsic Qualities

SECTION #3

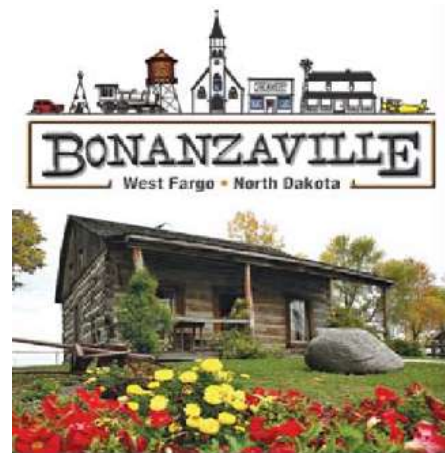


Recreation	Birding	Camping	Fishing	Golf	Hunting	Lakes-Rivers nearby	Nat'l Park/Monument/Refuge	Regional/Provincial Park	State Park	Tourist Information	Trails (bike, horse, hike)	Wildlife	Winter Sports	Snowmobile Trails
Wolverton, MN	●					●		●				●	●	
Breckenridge, MN/ Wahpeton, ND	●	●	●	●	●	●		●		●	●	●	●	
Wheaton, MN		●	●	●	●	●				●	●	●		
Graceville, MN		●	●	●	●	●		●		●		●	●	

Section #3: Attractions and Points of Interest:

Cities of Fargo and Moorhead Attractions

- a) Scandinavian Hjemkomst Festival - Moorhead/Fargo, Celebrate the unique cultures of Denmark Finland, Iceland, Norway, Sweden and Scandinavian America! (Re)Discover Finland and Finnish America during Finn Expo. Experience the finest in Ethnic Entertainment, Scandinavian Arts and Cultural Traditions
- b) The Bergquist cabin - Fargo, built in 1870 by Swedish immigrant John Bergquist, is the oldest house in Moorhead still on its original site. The cabin is open each year during the Scandinavian Hjemkomst Festival in June, and by appointment. Call the Clay County Museum for more information.
- c) Bonanzaville -Fifteen fascinating acres of historic buildings, ranging from a sod house to a church, court house and country store. Specialty museums house antique cars, airplanes, farm equipment and other memorabilia.
- d) Celebrity Walk of Fame - Fargo/Moorhead Walk the Walk with more than 100 celebrity signatures, handprints and footprints in cement at this free attraction. Stars from music, the arts, politics, and sports, including Garth Brooks, Neil Diamond, KISS, Maury Wills, Debbie Reynolds, and Governor Jesse Ventura, have left their mark, with more being added throughout the year.
- e) Clay County Museum and Archives - Moorhead, located in the lower level of the Hjemkomst Center. Exhibit galleries features changing exhibits on a wide variety of local history topics. Professional assistance is available to researchers in the Clay County Archives. Call for current exhibit.
- f) Comstock House - Moorhead, the Comstock House is an 1882 Victorian home with the original furnishings of Moorhead pioneer (1871) Solomon G, Comstock. A state senator, Comstook is considered the founder of Moorhead State University, and with his wife Sarah, was instrumental in establishing the first public library in Moorhead.
- g) Fargo Dome-Fargo, the FARGODOME is the largest contiguous exhibit hall space in North Dakota, hosting top-name concerts, ice shows, festivals, rodeos, trade shows, craft shows, circuses and fairs, football and basketball games, other sporting events and much more. Convention and meeting rooms are available for rent.
- h) Log Cabin Folk Art Center - Moorhead, this cabin was built in 1859 on the Red River, seven blocks northeast of where it now stands and is the oldest building in the Red River valley, Once a settler's home, it later served as a stagecoach stop on the Burbank Stage Company's route between St. Paul and Georgetown, Minnesota. In 1878 Charles Whitcomb bought the cabin and moved it to 10th Street North in Moorhead, where it remained until 1931 when Robert Nuebarth, another owner, took it apart and donated it to the city.
- i) Fargo Air Museum -Fargo, the Fargo Air Museum opened in August 2001 and is committed to educate the public about aviation and its impact on society, preserve local aviation heritage, inspire the public about the freedom, thrill and exhilaration of flight, awaken



patriotism in youth, and commemorate those before who have fought and sacrificed their lives for our country and our freedom. Some of the aircraft that you will see includes F2G-1D - the world's only flying SuperCorsair and one of the only three existing in the world; a Beech Staggerwing - aka "Queen of the Sky" is one of the all-time classic airplanes - uses in WWII on reconnaissance missions and to carry the generals. There is always something new flying into the Fargo Air Museum.



- j) Red River Valley Fair- West Fargo, an annual fair held in June, featuring nationally known entertainers as well as livestock, horticulture, and arts and craft shows. Other activities include a kiddie tractor pull, carnival and petting zoo,
- k) Red River Valley Speedway - West Fargo, The Red River Valley Speedway features stock car, sprint car racing and the World of Outlaws, Open April-August.
- l) Red River Zoo - Fargo, A state-of-the-art zoo with 60 animal species on more than 30 acres of natural habitat. Children will enjoy the animal petting areas and a ride on the restored 1928 Diederich Family Carousel.
- m) Roger Maris Museum - Fargo, The museum traces the career of legendary Fargo athlete Roger Maris. As a New York Yankee, Maris gained fame when he hit 61 home runs during the 1961 season, breaking the longstanding record of the great Babe Ruth. At the exhibit you'll see actual film of Roger's last 12 homers of 1961, along with his uniforms, baseball equipment and other memorabilia.
- n) Santa Village at Rheault Farm - Fargo, A charming village filled with the spirit of the holidays. Meet Santa, feed live deer and enjoy a sleigh ride. Admission is free with a donation of food, cash, or new or used toys, Santa Village opens the Saturday after Thanksgiving until December 23, For exact times and dates contact the Fargo Park Department at (701) 298- 6995.
- o) S.S. Ruby Pontoon Boat Ride Tours - Moorhead, take a relaxing 45 minute pontoon ride on the Red River with friends and family. A knowledgeable captain will tell about the history, geography and wildlife that live in and along the river. S, S, Ruby can be boarded on the Red River under the 1st Avenue North Bridge adjacent to the Hjemkomst Center, 202 1st Avenue North in Moorhead.



source: Dave Wallis/Forum News Service file photo

- p) Skateland Skate Center - Fargo, Skateland provides the finest in roller and in-line skating along with a full service snack bar, fun shop, amusement games and skate store. Specializing birthday parties, private parties, group rates and family discounts on Sundays.
- q) Sports Bubble - Fargo, the Sports Bubble is the area's only indoor driving range. The Sports Bubble hosts indoor sports leagues and welcomes parties, Two golf simulators available year-round. The Sports Bubble offers seasonal specials, call for more information.
- r) Stavkirke Norwegian Church Replica - Moorhead, "Stavkirke" is Norwegian for "Stave Church" a church built using long log columns as central supports. The Stave Church, in Viking Ship Park, is a quintessential labor of love. It was the dream of Guy Paulson of Fargo, who, with his wife, Beva, and sister, DeMaris Mathison of Spearfish, South Dakota, paid for the bulk of the church construction, a gift to the Heritage Ffiemkomst interpretive Center and the City of Moorhead. The church is a replica of the Stavkirke in Vik, Norway, which dates from the late 1100's. The church replica is used for weddings, cultural and educational events, as well as guided tours offered by the heritage Hjemkomst Center.
- s) The Children's Museum at Yunker farm - Fargo, The Children's Museum offers hands-on discovery for the entire family. The museum is home to more than 50 exhibits, including a children's railroad, mini golf and carousel, providing a fun family experience.
- t) The Farm Skate Park Facility - Moorhead, a place built just for skateboarders with ramps and jumps to challenge the youth of the community. Closed during the winter.
- u) Thunder Road Family Park - Fargo, look for the volcano at this outdoor amusement park featuring go 'karts, adventure mini-golf arcade and snack bar.
- v) Trollwood Park Trollwood Performing Art School - Fargo, the Trollwood Performing Arts School presents outdoor theatrical productions during the summer.

Wolverton, MN Look for...Great fishing on the Red River, migratory birding route, Victoria's Restaurant and Old School House on National Historic Register.

- a) Victoria's - Wolverton, N 1st St. The Wolverton School is on the National Register of Historic Places and operates as a restaurant today.

Ft Abercrombie State Historic Site - Abercrombie ND, At Kent (on Hwy. 75), drive through the city and go to MacCauleyville (special monument) and cross bridge to the fort. It was the first fort built in North Dakota, The site has a museum and a boat landing.

Bagg Bonanza Farm Historic Site - Mooretown ND, the farm site is located 5 miles west of Wahpeton and is listed on the State and National Registers of Historic Places. This is North Dakota's last restorable bonanza farm and newest attraction! Take a tour and learn about bonanza farm life and past generations who changed the Red River Valley from the country's furthest outpost to a settled, prosperous farming community.

Breckenridge, MN/ Wahpeton, ND

www.wahpetonbreckenridgechamber.com

Look for...Chahinkapa Zoo (over 200 animals), Prairie Rose Carousel and Chapel (Restored



1926 Antique Caroiisel), Railroad Park with Great Northern caboose, Richland Co. Historical Museum(Rosemeade Pottery), Wilkin Drink & Eatery, world’s largest catfish at Kidder Recreation Area (Wahpper), Red River of the North Historic Canoe Trail, Oxcart Trail Park, Welles Memorial Park, Headwaters of the Red River Park monument, Wilkin County Historical Museum, Bois De Sioux Golf course (9 Holes in North Dakota and 9 Holes in Minnesota), Bagg Bonanza Farm (America’s Only Restored Bonanza Farm), Fort Abercombie (State Historical Site, Museum and Fort Guard House), Six Hotels, Historical Walking Trail, canoeing and boating on the Otter Tail River.

a) Chahinkpa Park & Zoo & Carousel -

Wahpeton, swimming pool and zoo hosts more than 60 species of birds and animals. 1926 restored carousel features hand-crafted wooden horses you can ride!



b) Kidder Viewing Recreation Area - Wahpeton

Park & Rec in control on banks of Red River. The recreation area is approximately 26 acres and features boating, fishing, etc.

c) Richland County Historical, Museum -

Wahpeton, ND, the museum was built in 1965 and provides more than 12,500 square feet of display space which makes it possible to house a great variety of historical items.

d) Breckenridge Wastewater Treatment Ponds

Birding Site - the facility site has municipal treatment ponds and fields. The best time to visit is April through May and September through October. The different types of birds to look for are waterfowl, shorebirds, gulls, terns, and migrant sparrows. Viewing the site from township roads is permitted. Permission is needed to access inside the pond area.



e) Headwaters Park & Boat Landing - Concrete

plank boat ramp with parking lot, Headwaters Monument, Friendship sculpture, interpretive kiosk, fishing pier, picnic shelter. Confluence of Bois de Sioux and Otter Tail Rivers which is navigable by canoe for about 160 miles. Connected to Welles Memorial Park by walking bridge.

f) Jefferson Park- located on 10th Street South & Dacotah Avenue. Facilities include playground equipment, shelter, restrooms and softball fields.

g) Ox Cart Trail Park - Located on Wilkin Avenue & Vine Street, facilities include playground equipment, basketball, family softball area, shelter, restrooms and a large grassy area.

h) Skating Rink Area - located on Highway 75 at North 6th Street & Beede Avenue. Facilities include lighted hockey and open Skating areas, warming house and teen center.

i) Rotary Park - Breckenridge, is located on Main Street near Park Manor on the Otter tail River. Facilities include a picnic shelter.

- j) Gewalt Park- a passive park located on Andrews Avenue and North 15th Street. It contains a gazebo dedicated to former Mayor Calvin Michels and picnic table and benches.
- k) Senior High School Athletic Complex- Breckenridge - is located at the east end of North 14th Street. Facilities include softball, baseball, and football fields, track for running, restrooms, storage buildings and a press box.
- l) Kid's Corner- Breckenridge, is located at south 7th Street & Chicago Avenue. Facilities include playground equipment, basketball courts and a shelter.
- m) Headwaters of the Red River to the North - Breckenridge, a main attraction to Breckenridge, is located on Minnesota Avenue. It is the source of the Red River of the North. At this historic point the mighty Red River of the North begins its unique northward flow almost 600 miles to Lake Winnipeg. It is the longest north flowing river in America.
- n) Wilkin Drink & Eatery -Breckenridge, is located at Highway 75 & Minnesota Avenue is the only business in Minnesota in continuous operation, on the same location, since King of Trails Log Book of 1918. The business has been in operation since 1896.
- o) Bois de Sioux Golf Course - Breckenridge and Wahpeton, is an 18-hole golf course that ties in two states and joined by a bridge spanning the Red River of the North. The Bois de Sioux & Wahpeton Park & Rec manage the golf course.
- p) Angelique's Arbor - a mini rest area located on the historic King of Trails in downtown Breckenridge, Minnesota. The rest area was the vision of Project Breckenridge, a local non-profit corporation. The name "arbor" was chosen because it means a place of trees, shrubs and in particular, vines growing on a latticework.
- q) Wahpeton-Breckenridge Street Railway Company - the shortest interstate streetcar line in the United States that ran from Brackenridge Minnesota to Wahpeton, North Dakota (1.14 mile) from 1910 to 1925.
- r) Breckenridge Historic Walking Trail - Breckenridge, a brochure that explains the historical sites for the city of Breckenridge.
- s) Boom for Holding Logs, Mill Seat & Lumber Yard - Breckenridge, in 1857 this was the site of the Boom for Holding Logs, Mill Seat & Lumber Yard. Timber was logged north of Otter Tail Lake and logs were floated down the Otter Tail River and into a canal and then into the Boom where they were held until sawed into lumber.
- t) Breckenridge Historical Marker - Brackenridge, this historical marker tells about the destruction of Breckenridge by the Sioux Indians in 1862.
- u) Wilkin County Historical Museum - Breckenridge, this museum is very interesting and well-planned small city museum. Exhibits are changed frequently. The main floor of the museum has eight rooms furnished with antiques. The lower level of the museum you will find a bedroom, bathroom, pioneer kitchen and a laundry room.
- v) Hyser Hotel - the hotel was established in 1871 and was a hotel and eatery for railroad crews. St. Paul & Pacific Railroad reached Breckenridge on October 25, 1871. Upon arriving, the Hysers set up a tent hotel to house and board the railroad construction crews.



- w) Snyder & Anderson General Store- Breckenridge, This site was located on Wisconsin Avenue between the AMACO Station and the alley, where the white house sits. The site was established in 1871 and sold general merchandise.
- x) Wilkin County Courthouse - Breckenridge, is a beautiful and unique structure and is listed on the National Register of Historic Places in the United States. Construction began in the fall of 1827 after debris from the old courthouse fire was cleared away.
- y) Northern Pacific Fergus & Black Hills Railroad Depot - Breckenridge, the Northern Pacific, Fergus & Black Hills Railroad Co, reached Breckenridge on October 11, 1882. On this site stood the depot. This was the second railroad to be built into the county. The old railway line was abandoned in 1980-1981 and the tracks removed.
- z) Gazebo Railroad Park - the park is located on Minnesota Avenue between 4th and 5th streets. The gazebo is dedicated to the memory of long time Breckenridge Clerk Michael Caspers,.
- aa) Welles Memorial Park-Breckenridge, Picnic shelter, 5 primitive campsites, 2 campsites with electricity, parking, fire ring wood, tables, flush toilets, historic cabin and school house.
- bb) Three Rivers Performing Stage - Breckenridge, is an outdoor stage that is located four blocks west on Nebraska Avenue in Welles Memorial Park.
- cc) Cabin of the First Expedition - Breckenridge, the cabin is located in Welles Memorial Park. This site marks the approximate location of the first expedition of 10 men to arrive in Breckenridge on January 29, 1857, The cabin was constructed in February 1857.
- dd) Lion's Park - Breckenridge, Is located on Highway 75 North on Otter Tail River. Facilities include playground equipment, picnic shelter, restrooms, public access to river, parking and historical monument, telling about the burning of Breckenridge in 1862.
- ee) Breckenridge Family Aquatic Center - Breckenridge, is located eight blocks east on Beede Avenue. The family recreation center aquatic center was built in 2004.

Wheaton, MN Look for...Fabulous walleye fishing, good hunting land, historic Chicago/Milwaukee/ St. Paul Depot, Crandell's Restaurant for homemade pies, restored country school 14 miles north on Trail.

Graceville, MN Look for...Toqua Lake, Historic Shannon Hotel, Holy Rosary Catholic Church, Hitterite Farm-sells to the public, nearby Sisseton

- a) Shannon Hotel - Graceville, Studdart Ave and 2nd St. Listed on the National Register of Historic Places.
- b) Graceville Golf Course - south of Graceville off Hwy. 75, ½ mile west on County Road 18. Graceville's course is a 9 –hole course, par 36. Course slope rating: men's MGA - 34.3/112; ladies rating, 35.0/ 110. Cart rental available. Course is open 7a.m. to dark. Wednesday and Thursday are league days



Section #3 Events

June

- Blue Goose Days Wahpeton, North Dakota
- Blue Goose Days Breckenridge, Minnesota

July

- Crazy Day Breckenridge, Minnesota/
Wahpeton, North Dakota

August

- Wilkin County Fair Breckenridge, Minnesota

- Traverse County Fair Wheaton, Minnesota

September

- Breckenridge Headwaters Day
Breckenridge, Minnesota

December

- Christmas in Welles Memorial Park
Breckenridge, Minnesota Red River
Wahpeton Wheaton

Section #4: Maps and Intrinsic Qualities

SECTION #4



Recreation	Birding	Camping	Fishing	Golf	Hunting	Lakes-Rivers nearby	Nat'l Park/Monument/Refuge	Regional/Provincial Park	State Park	Tourist information	Trails (bike, horse, hike)	Wildlife	Winter Sports	Snowmobile Trails
Clinton, MN					●	●				●	●	●	●	
Ortonville, MN	●	●	●	●	●	●	●	●	●	●	●	●	●	●
Madison, MN	●	●	●	●	●	●			●	●		●	●	
Dawson, MN	●	●	●	●	●	●				●		●	●	
Canby, MN	●	●	●	●	●	●		●		●	●	●	●	●
Gary, SD	●	●	●	●	●	●	●		●	●	●	●	●	●
Porter, MN		●									●	●	●	

Section #4 Attractions:

Clinton, MN Look for...Old Depot, Nearby Continental Divide in Brown's Valley where water flow splits by flowing north to Hudson Bay and south to the Gulf of Mexico.

- a) Chicago, Milwaukee, St Paul & Pacific Railroad Depot - Clinton, Main and Center St. This building is on the National Register of Historic Places.
- b) Big Stone County Fair- Clinton Held every July this is a popular event for local residents,
- c) Continental Divide-Clinton - The continental divide marks the location of the Mississippi River Watershed that flows south toward the Gulf of Mexico, and the Hudson Watershed where water flows north to the Red River toward Hudson Bay.



Big Stone State Park - Big Stone County, is one park but located in two areas, both on Big Stone Lake and accessed by Highway 7. The Meadowbrook Area has a public lake access, electrical hookups and water, modern showers and bathrooms, and group facilities. The Bonanza Areas set-aside for naturalist interests and provides primitive camping for groups only. This area features rare virgin prairie and is home to the Bonanza Environmental Center, staffed and maintained by a core of area school districts.

Ortonville, MN www.bigstonelake.com Look for...Historic downtown with old courthouse, Big Stone County Museum with enormous granite anchor, possible Viking stone, pioneer village, 500+ mounted water birds and fossils & prehistoric shark tooth, Big Stone State Park & National Wildlife Refuge with auto drive, operating granite quarry, Pioneer Locker for sausages, wonderful walleye fishing, deer/pheasant/duck hunting.

- a) Big Stone County Courthouse - Ortonville, 20 SE 2nd St. This operating courthouse is on the National Register of Historic Places.
- b) Ortonville Public Golf Course - Ortonville, from the intersection of Hwys 7 & 12: go north on Hwy. 7 for 1 ½ miles and take a right on Golf Club Road. This is an 18-hole course, par 72.6, 182 yards for men 5,419 yards for women; slope rating of 105. Clubs and cart rental available. Wednesday and Thursday are league days.
- c) Columbian Hotel - Ortonville, 305 NW 2nd Street. This building is on the National Register of Historic Places.
- d) Ortonville Commercial Historic District -in the vicinity of 2nd St, Madison and Monroe Aves.
- e) Ortonville Free Library - Ortonville. 412 NW 2nd Street. This functioning library is on the National Register of Historic Places.
- f) Big Stone County Museum & Wildlife Exhibit - Ortonville, * located at the junctions of State Highway 72 and 75. The museum is the home of many historical treasures of the past. A granite anchor, a symbol of glacial River Warren, which is now Big Stone Lake, and the

headwaters of the Minnesota River. The Muskegon - Golden Bantam boat, which once traveled the waters of Big Stone Lake, is also on display at the museum.

Bellingham, MN Look for...Deer, pheasant, duck hunting, Lac qui Parle Refuge, memorial park.

Big Stone National Wildlife Refuge - Odessa. The 10,000 acre Big Stone National Wildlife Refuge located south of Ortonville on Hwys 75 & 7 features 9.3 mile hard surfaced auto tour and bike route; groomed hiking trails beginning at edge of parking lot; and a public canoe access is also available. Hiking the granite outcroppings provides ventures into stone, wildlife and plants (plants as rare as ball cactus can be readily found in this area).

Odessa Jail- Odessa, Main and 2nd St. building is on the National Register of Historic Places.

Marsh Lake -Appleton" a man-made reservoir on the Minnesota River west of Appleton has one of the only two nesting colonies of white pelican in Minnesota.

Lac qui Parle Wild Life Management Area - Lies in Big Stone Chippewa, Lac qui Parle and Swift Counties. It is about 25 miles long, 1 to 3 miles wide, and encompasses more than 31,000 acres or over 48 square miles of land and water - wetlands, brush lands, woodlands, native prairie, and other grasslands and cropland. Lac qui Parle Lake (6,400 acres) and Marsh lake (5,100 acres) are the most prominent features.

Lac qui Parle State Park -Lac qui Parle County, the state park has 65 semi modern campsites (22 with electricity), showers and flush toilets, primitive group camps (50 capacity), horseback riders group camp (100 capacity) with an open shelter, 33 picnic sites, swimming beach, drive-in boat launch to Lac qui Parle Lake, 6 miles of hiking trail,6 miles of horseback riding trails, 5 miles of ski trail, trailer sanitation dump station, canoe access to Lac qui Parle River, and public telephone. Fishing is a popular year-round activity on Lac qui Parle Lake.

Camp Release - Located on the edge of Montevideo, just off Highway 212, the Camp Release Monument stands as a reminder of Minnesota's early state history. The Minnesota River Valley and Montevideo played an integral part in the United States - Dakota Conflict of 1862.

The Lac qui Parle Mission and Fort Renville Site- Lac qui Parle County, historic site is northwest of Montevideo, Minn. From Montevideo, go north on U.S. Highway 59 for 6 miles, then go west on Chippewa County Highway 13 for 2.2 miles and turn right at the corner; the mission is on the right. The chapel is open 8 a.m. to 8 p.m. daily from the last Sunday in April through Labor Day. Visitors may tour the site at any time year-round, Overlooking the Lac qui Parle Lake, offered the first intensive contact for many Dakota Indians and European- Americans, It is where the Bible was first translated into the Dakota language. Other notable Native American historic sites include: Upper Sioux Agency, Ambush Park, Pejuhutazizi Church, Woodlake Monument, Camp Release, Williamson Mission and Hazelwood Mission.

Madison, MN www.madisonmn.info/ Look for...Lutifisk Capital US A, Lac qui Parle Historical Museum including studio of author Robert Bly, historic Carnegie Library, NASC AR race track.

a) **Madison City Hall** - Madison, located at 404 6th Ave. This facility is on the National Register of Historic Places and is still used as the city office.

- b) Madison Carnegie Library- Madison, located at 401 6th Ave, This facility is on the National Register of Historic Places and is still used as the city library.
- c) Madison Country Club - located on the west edge of town on Hwy. 40, an old course with many mature trees and some hills. It is a 9-hole, par 35, 2,802 yards for men and women; slope rating of 119. The course itself, originally railroad land, is located on a 40-acre tract purchased in 1926 for \$5,0000, lies along the SW edge of the incorporated City of Madison.



- d) Lac qui Parle County Fair- Madison, one block east of Hwy 75 at the county museum. The fair is held every September draws a crowd from the area; the fairgrounds are also home to weekly NASACR races during summer months.
- e) Lac qui Parle County Courthouse- Madison, 600 6th St. The courthouse is on the National Register of Historic Places.
- f) Robert Bly Studio @the Lac qui Parle County History Center - Madison, the building was originally built in 1898 and used as a country schoolhouse until rural schools consolidated with city schools in the 1950's. Robert Bly moved the building from its original location a couple of miles away, to his own farmsite in the early 1960's. Here Bly used it as his writing studio and edited his famous literary magazines The "Sixties" and "Seventies". The studio and farm was much more than a writer's home and workplace. Here, he and his former wife, Carol, developed plays that featured local actors in humorous portrayals of their own lives. The studio was also where Bly held his "tea parties". The busy writer took time for separate one-on-one visits with each of his four children.

Lac qui Parle History Center- Madison, a modern building completed in 1972. Within are artifacts from the Indian Period; a War Memorials Display; An Early Church; A Reference Library; Pioneer Life depicted by period, kitchen, parlor, bedroom, hand tools, grocery and clothing stores; and other appropriate displays.

Dawson, MN Look for..."Gnometown US A"-reflecting Scandanavian Heritage with gnome statues throughout town, Lac qui Parle River, Lac qui Parle State Park, Dawson Historical Armory Building, historic Carnegie Library, old gas station.

Salt Lake Wildlife Management – in Yellow Medicine County is a divisional saline lake between Minnesota and South Dakota. In the spring, the lake attracts many species of birds, especially waterfowl and shorebirds. The lake has become a popular place for nature enthusiasts, especially birdwatchers. An unusual variety of plants, adapted to a saline environment are

found along the lake 's shores. From Madison go west on Hwy. 40, 11 ½ miles, turn south at Salt Lake sign, go 3 miles south, and west one mile.

Dawson Golf Course - located on Hwy. 212, NW edge of town. The course is a 9-hole, par 35, 2,900 yards for men, par 34, 21900 yards for women; slope rating of 89. Tee times are required. Pull cart, cart and club rentals available. Tuesday and Thursday are league days.

Canby, MN Look for...1870's railroad center, Canby Depot Museum, 1891 Lund-Hoel House Museum, historic Lundryng Service Station, Del Clark Lake.

- a) Canby Depot information center & Museum -the depot hosts many events including Santa /Christmas Open House). It has registered almost 2000 visitors. Restoration (new windows) for the depot is ongoing by volunteers. An annual membership drive occurs in May.
- b) Yellow Medicine County Fair - Established in Canby in 1900, was preceded by a Canby local fair from 1880-1887. The Yellow Medicine County Fair Association purchased 22 ½ acres of land from M.S. and Bernt Nelson on the north edge of Canby for a fairgrounds at a cost of \$840. Since 1900 the fair has been held each year. Horse racing was very popular and the Nelson brothers laid out a half mile race track for July 4, 1886 races, and later became the County fairgrounds. In 2004, the fairgrounds became home to car races.
- c) Stone Hill Regional Park & Del Clark Lake - Stone Hill Regional Park sits on 700 acres of rolling Northern Tallgrass Prairie. Forty years ago the Lac qui Parle Yellow Bank Watershed District conceived plans to control flooding on the Canby Creek, which flows through Canby, Minnesota. Planners hoped to build an earthen dam to stop the creek floodwaters. Later, in an effort to increase the benefits of the dam to people in the surrounding area, they added recreational facilities to the project. The dam was completed in 1985 and in 1987 the recreational facility was opened to the public.
- d) Canby Commercial Historic District -shows the old bank building; the lone survivor of the 1893 fire that destroyed the business district of Canby on the left. Across the street is the brick replacement building dated 1894. You can look up and see this date in the center of the building. After the fire, Canby rebuilt with brick in the downtown business area.
- e) John Lund House- Canby, the Lund House was built by John Lund in the 1890's and in 1903 purchased by Rev. Olaf Hoel and his wife, who was John Lunds sister. It was lived in by this family for a long time and was the site of many weddings as Rev. Hoel was pastor of St. Stephen's Lutheran Church for many years. It was used as the Richter Home for some time and in the late 1970's was purchased for use of a museum. It is operated by MECCA (Museum Encompassing Canby Community Area) and interesting displays in the home and carriage house
- f) Canby Golf Course -located 2 miles north of town on County Road 13. The course is a 9-hole, par 36. Cart rentals and clubhouse available. Tuesday and Wednesday are league days

Gary, SD Look for...Birding, hunting, golf, fishing, groomed snowmobile trails, rodeo, cattle drive. www.garysd.com

Porter, MN Look for...Camping, trails, large manufacturing plant.

Section #4 Events

January

- Polar Bear Plunge Canby, Minnesota

March

- Annual Sports & Leisure Show Ortonville

April

- Salt Lake Birding Near Marietta, Minnesota

June

- Canby Hat Daze Canby, Minnesota

July

- Yellow Medicine County Fair Canby, MN
- Big Stone County Fair Clinton, Minnesota
- Fur Trade Encampment Gary, SD
- Four Moons Rizing Rendezvous Gary, SD
- Summerfest Madison, Minnesota
- Lund-Hoel House Ice Cream Social, Canby

August

- Crazy Days Canby, Minnesota
- Oktoberfest Madison, Minnesota
- Annual Corn Festival Ortonville, Minnesota

September

- Lac qui Parle County Fair “Little Minnesota State Fair” Madison, Minnesota
- King of Trails Market Day Ortonville, Canby Minnesota, Big Stone Lake, South Dakota

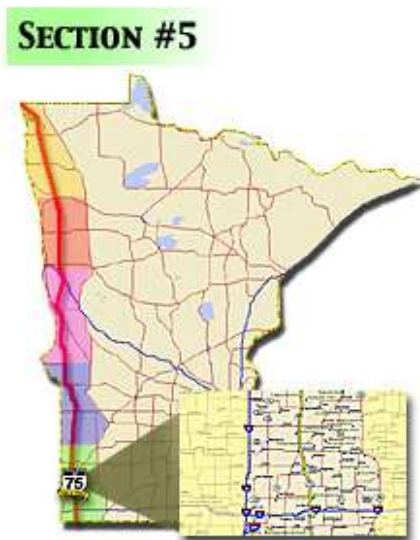
October

- Upper Minnesota Meander Art Crawl Ortonville, Dawson, Canby, Madison, MN
- Cattle Drive Gary, South Dakota
- Oktoberfest Madison, Minnesota

November

- Norsefest Madison, Minnesota

Section #5: Maps and Intrinsic Qualities



Recreation	Birding	Camping	Fishing	Golf	Hunting	Lakes-Rivers nearby	Nat'l Park/Monument/Refuge	Regional/Provincial Park	State Park	Tourist Information	Trails (bike, horse, hike)	Wildlife	Winter Sports	Snowmobile Trails
Ivanhoe, MN	●	●	●		●	●				●	●	●	●	
Hendricks, MN	●	●	●	●	●	●			●	●	●	●	●	
Lake Benton, MN	●	●	●		●	●		●		●	●	●	●	
Pipestone, MN	●	●		●	●	●	●	●	●	●	●	●	●	●
Luverne, MN	●	●		●	●	●	●	●	●	●	●	●	●	●

Section #5 Attractions and Points of Interest

Ivanhoe, MN Look for..."Little Europe" with ethnic village, 450 wind turbines, Laura Ingalls Wilder Historic Highway 14.

Hendricks, MN Look for...Lake Hendricks, Norwegian ethnic heritage, Lincoln County Pioneer Museum, Midwest Center for Wind Energy.

Lake Benton, MN Look for...Original Wind Power Capital, Buffalo Ridge with more than 1,000 250-ft. windturbines, The Heritage & Windpower Learning Center,

recreation on Lake Benton, historic Opera House (still in operation), Indian burial mound in local cemetery.



a) Hole in the Mountain Park – Lake Benton, Hole in the Prairie is part of a 4,300 acre native prairie area. This Prairie is a large remnant, situated on a steep valley along the outer edge of the glacial escarpment known as the Prairie Coteau. The preserve is good habitat for rare prairie-dependent insects including 25 species of butterflies: Dakota skipper, Ottoo skipper, Uncas skipper and Pawnee skipper. The inconspicuous Dakota skipper has a wing span of 1 to 1.5 inches, is yellow or straw colored and has an erratic daring flight. The Dakota skipper survives on only a few scattered virgin prairie habitats. There are over 60 species of grasses, sedges and rushes, 10 species of trees and shrubs and 200 species of wildflowers found here.

b) Heritage & Windpower Learning Center - Lake Benton, a newly built museum with interactive computers to help explore and learn about the benefits of wind power. The Heritage Center also houses the history of Lake Benton and compares its relationship to the State of Minnesota. The museum is set in a unique timeline display, Displays and exhibits are changed often to keep the museum fresh and interesting.

c) 1896 Historic Opera House - Lake Benton, in 1895 the original wood structure was burned down by an accidental fire, Two weeks after the fire, the citizens of Lake Benton banded together to build the "fine brick building." On March 25,1977, the Opera House continues to provide a full and varied program of plays, musicals and sponsored talent.

d) Wind Power/ Buffalo Ridge - Lake Benton, over 450, 208 feet high' 57 ton wind towers grace the Buffalo Ridge.



The Buffalo Ridge is a moraine, which is a range of hills formed by sediment (salt, gravel, and boulder) that was left as a result of glaciers. There is a 1.6-kilometer wide break in the moraine in Lake Benton. Highway 75 travels the Buffalo Ridge. From the road many turbines can be seen, creating clean, renewable electricity. Electrical energy produced from wind is pollution free and it is also economical, competitive and plentiful along the Buffalo Ridge.

Pipestone, MN Look for...Famous 132-ft. historic water tower, Pipestone National Monument with sacred Native American sites & scenic Winnewissa Falls, Pipestone County Museum, Pipestone Historic District with old Calumet Inn, Moore Block Building with stone gargoyles, Rock Island Depot with large peacepipe on grounds, Fort Pipestone, Little Feather Interpretive Center, Casey Jones Recreational Trail.

- Pipestone Commercial Historic District² - Pipestone, the downtown Pipestone Commercial Historic District is comprised of approximately 30 commercial buildings located in a two-block area of Pipestone. Pipestone was first platted from 1873 to 1874, and a boom from 1883 to 1884--the result of the establishment of railroad service to the area and successful land promotional efforts by the South Minnesota Land Company. The character of the district is derived from the exclusive use of Sioux quartzite as a building material in 17 of the buildings, making it the largest concentration of Sioux quartzite buildings in the state. The majority of these buildings were built in the 1890s and visually relate to each other in height, scale and vernacular style, sharing a common texture and color of building materials. Although most of the pivotal buildings are vernacular, there are examples of the Richardsonian Romanesque, Neoclassical and Italianate styles as well.
- Syndicate Block - Pipestone, the Syndicate Block occupies a prominent corner in downtown Pipestone and has the distinction of being the largest and the oldest Sioux quartzite building in the Pipestone Commercial Historic District. In addition, this building also acts as an anchor for the West End Business District. There were originally three different stores with three different owners when the building was constructed in 1884.
- Cheverton Block – Pipestone, William Frost constructed the eastern portion of this two-story quartzite building in c.1889. Frost sold the building in 1896 at a cost of \$6,000 to the International Order of Odd Fellows (I.O.O.F.) which had been renting the second floor. Upon purchasing the building, the I.O.O.F. removed the Cheverton Block stone atop of the building and replaced it with the I.O.O.F. initials, which still grace the building today. The I.O.O.F. was a fraternal organization that began as a convivial society and mutual benefit organization. The I.O.O.F. used elaborate rituals to form a network of kinship ties through which the organization practiced its mutual aid, and also acted as a form of social club.
- First National Bank Building - Pipestone, as one of the more prolific architects of Pipestone, Wallace Dow designed the 1898 First National Bank building. Leon Moore and A. J. Martín constructed the two-story, 25 by 80- foot Sioux quartzite building, decorated with molded gray granite columns and a Richardsonian inspired Sioux quartzite arch with a light colored keystone, The most distinctive features which still mark this neoclassical building are the fluted pilasters with Corinthian capitals that support an entablature and triangular

² Website to historic district: <http://www.nps.gov/nr/travel/pipestone/phd.htm>

dentilated pediment, the lunette date stone and the words "First National Bank," done in relief on a light colored stone,

- Ober-Hubbarred Blocks - Pipestone, Wallace Dow, an architect from Sioux Falls, South Dakota, designed this building, constructed by Leon Moore in 1899. The Ober-Hubbarred Block's outstanding architectural features include Sioux quartzite dentils, rounded window arches with light colored quartzite keystones, and a frieze with a stylized blind arcade bordered on both the top and the bottom with jasper stone. The lower facade does not resemble the original anymore due to the installation of a later aluminum storefront.
- The Colonial - Originally housing an ice cream parlor, this ivory terra cotta front building was designed by Joseph Schwartz in 1919 for H. Thompson and Gus Bussis, The facade of the building displays its most distinguishing features. The building is unusual as it incorporates different architectural styles into one building.
- Old First National Bank Building - Pipestone, the old First National Bank Building is another building that dominates the downtown of Pipestone. Designed in 1916 by P. J. Lindhoff, the bank relocated to this building from its earlier location at 113 W. Main Street. The Neoclassical building is constructed of buff colored Bedford limestone and has the name "FIRST NATIONAL BANK" carved over the large fluted Doric columns.
- Mackay Block - Pipestone, built in 1898 by Leon Moore for Fraser Mackay, the focal point of this two-story Romanesque building is the second floor oriel window. The building's facade is embellished with a checkerboard patterned frieze of pink and red Sioux quartzite and pink belt coursing. In earlier years, the building was a dry goods store and grocery followed by the Gem Theatre for 20 years,
- Ferris Grand Block - Pipestone, the Ferris Grand Block was designed by Leon Moore, responsible for many of the town's buildings, for A. D. Ferris in 1898. Originally the building contained two stores on the first floor, the Ferris Grand Opera House on the second floor and a balcony on the third. At its grand opening on March 10, 1899, the opera house boasted seating for 800 on the main floor and balcony, and was said to be the largest and finest facility of its kind in this part of the state.
- Moore Block - Pipestone, in 1897, Leon Moore, who also constructed the Moore Block at 102 E. Main St., built a Sioux quartzite building at 104 E. Main St. and 107 S. Hiawatha Ave. in the shape of an "L" around Moore's corner store. The 1966 fire that completely destroyed the west building heavily damaged the north store, but the damage was repaired. In 1993 the building was converted into the lobby for the new Pipestone Performing Arts, Center, which occupies this building and the one to the east.
- Pipestone City Hall - Pipestone, among one of the more imposing buildings in town, C. C. Smith and Mr. Leeds constructed Pipestone City Hall in 1896 following the architectural designs of Wallace Dow. This building stands out in the streetscape of the city with its stepped parapet, finials and round arch window. The City Hall Building originally housed the fire department, the local government offices and the city water system. Over the next 64 years, the building also housed the city lock up, public library, gymnasium, meeting hall and teen center.

- The Calumet Hotel - Pipestone, the Calumet Hotel was built by Close Brothers and Co., an English land speculating company which helped Pipestone prosper in the late 19th century. Its outstanding features are the large quartzite arch over the northwest door, the northeast corner door, the north crenelated cornice, the restored oriel window on the second floor northeast corner and the two engraved name plates near the top of the north facade.
- Walker Block and Cook Drug - Pipestone, the pressed metal cornice and polished stone with the engravings "Walker Block" and "1896" are distinctive features of the building. The second floor bay window constructed in the early 1980s is a replica of the original one. Assorted saloons were located here for 78 years. At different times during the late 1890s and early 1900s the second floor was annexed to the Calumet Hotel by an arch. Since that time, the second floor has been used for professional offices and apartments.
- Clymer Block- Pipestone, contractor William Frost and builder J. M. Poorbaugh built the building for O. Clymer in 1890. The most distinctive features of this building include the corbelled cornice interspersed with jasper, arched windows with Sioux quartzite voussoirs and jasper keystones imposts. The first floor facade has been modified from the original design. A photography studio occupied the second floor from 1893 to 1955. Since the early 1950s, the second floor has been occupied as an apartment.
- Masonic Temple - Pipestone, this three-story, random coursed Sioux quartzite building was completed in 1893 for \$20,000 to house the Masonic Bodies Meeting Rooms. The rounded spheres located on the top corners represent the terrestrial and celestial globes of the universe--one of the many lessons of Masonry. The building also has a corbelled cornice with corner finials, jasper belt courses and jasper segmental arches and imposts accenting the third-story window openings.
- The Austin Block - Pipestone, the historic building is notable for its checkerboard-patterned frieze made from alternating pieces of Jasper and Sioux quartzite, and for its Jasper quartzite belt course. Over the years, the building became home to a number of different businesses including a hospital run by Dr. Richards in the 1920s, and a grocery store, which inhabited the space for 26 years. Apartments and other professional offices once occupied the second floor, but now are vacant. Several barbershops and ice cream and candy factories have also occupied the basement level.
- Brown Hospital - Pipestone's first hospital was located in this one and a half story 25 by 50-foot Sioux quartzite building. Constructed in 1912, the Brown Hospital is the only historic property related to the community's medical history. The building also has the distinction of being the only example in the historic district of a Sioux quartzite building that incorporates in its principle gable wooden overlays, clapboard, and scalloped shingle siding.
- The Pipestone Indian School - The Pipestone Indian School Superintendent's residence, built in 1907, is significant in Minnesota history for its association with federal policies towards American Indians, particularly the role the United States' government played in attempting to assimilate Indians through policies in education. This building is a rare remnant from

what was once a sprawling farm campus that had over 60 buildings and a capacity for about 400 students.

- The Rock Island Railroad Depot - Pipestone, built in 1890, is Pipestone's only remaining depot. In Pipestone's heyday, there were four rail lines going into the city. As one of the major reasons for Pipestone's prosperity, the railroad is central to the history of this small Minnesota town. The 26-foot by 80-foot depot is constructed of cream colored bricks, trimmed in Sioux quartzite.
- Pipestone Water Tower - Since its completion in 1921, Pipestone's concrete water tower has been a visible landmark of the city, rising high above the countryside and marking the city to travelers from several miles in the distance. Designed by L. P. Wolff of St. Paul, the structure is one of only two known water towers designed by Wolff in the United States and is significant for its poured concrete construction.



Pipestone National Monument - Pipestone, created by an act of Congress in 1937, and is an area of ethnological, archeological and historical significance that preserves the pipestone quarries in a natural prairie setting. For centuries American Indians have come to this site to quarry the red stone called pipestone. Through the years pipes carved from pipestone have been used for many purposes: to show intention for war or peace, to seal agreements and treaties, for trade, and for religious ceremonies.



Source: NPS, with photo courtesy of Lorraine Draper

Pipestone National Monument

- The Carnegie Building - in Pipestone is one such library that impacted this small midwestern town. Constructed between 1903 and 1904, this 26 foot by 51 foot Sioux quartzite building was designed by Joseph Swartz and built by George Redmon. With its prominent raised Gothic arch entry and rounded northeast corner, the design is typical of other Carnegie libraries.
- The County Courthouse - Pipestone is the most elaborately designed building in Pipestone County and is among the most outstanding examples of local use of quartzite stone. The building is noted for its architectural merit consisting of a rectangular plan with two slightly projecting bays at either end of the front facade and projecting entrances on both sides. A highly decorated square tower in the center of the front facade rises 110 feet above the ground and is topped by a dome and a figure of Lady Justice.
- The Ihlen Mercantile - Pipestone, constructed in 1885 by John Olson, was the first business establishment in Ihlen and remained in operation as a general store and post office until 1985.
- Split Rock Bridge - Pipestone, built as a Works Progress Administration (WPA) project, the Split Rock Bridge is an outstanding example of an ornamental park bridge, achieving its aesthetic effect through the purity of its form and the beauty of its random ashlar masonry.
- The John Rowe House (or Farrar House) - Pipestone, is a simple bungalow, like many found across the country; however the house is unusual because it is sheathed in locally quarried stone, The one and a half story house has an irregular, but basically rectangular plan. Midway down each side of the building are projecting bays. The east bay is rectangular, while the west bay is rounded with a conical roof.
- Civil War re-enactment is held every two years (even numbers years). 1500-1600 visitors from North Dakota, South Dakota, Wisconsin, Iowa, Nebraska, Kansas and Minnesota attend this event.

Split Rock Creek State Park- Jasper Swim, fish, or boat the waters of Split Rock Lake, the largest body of water in Pipestone County. The lake is the predominant feature of this park. Stop by the Beach Side Trail Center for an excellent vista and to discover more about the area. Seven miles north of the park is the famous Pipestone National Monument.

City of Jasper

- a) The Gerber Hospital - Jasper, the small town of Jasper's first and only hospital, was constructed around 1914 for Dr. Louise M. Gerber. Modeled after a chalet in Gerber's homeland of Switzerland, the hospital was constructed of the stone from a building across the street that had collapsed because of a poor foundation.
- b) Bauman Hall - Jasper, was constructed in 1881 as a hotel for quarry workers in the town of North Sioux Falls, where the building was originally located. There was no longer a need for a hotel in North Sioux Falls, Henry Holvig had the hotel building disassembled stone by stone and brought to Jasper where it was reassembled in 1908.
- c) Jasper Stone Company - Jasper, in its early days, the quarry furnished immense quantities of building blocks that were shipped to cities by rail. The stone was greatly sought after because of its hardness, elegance and permanent color.

Sioux Quartzite Outcrops - North of Hardwick along Highway 75 to the Pipestone County border, travelers will note the large amount of Sioux Quartzite rock outcroppings on both sides of the road. This remains from the glacial age and includes rocks that show the glacial scarring.

City of Hardwick- Hardwick, this community is located ½ mile east of Hwy 75. This small community is home to the recently updated Milford Remme Park that includes playground equipment and ball field. The community club sponsors their annual Jubilee Days the last Saturday

Luverne, MN www.luvernechamber.org Look for...Blue Mounds State Park with herd of 45 bison, historic Rock County Courthouse, Hinkly House, Rock County Historical Museum, Verne Drive-In Theater (seasonal), Touch the Sky Prairie, Historic Palace Theatre, Omaha Depot. in June.

- a) Schoeneman Park- Luverne, this county park is located on Highway 75, 1 mile south of Luverne. There is fishing, picnic areas and wildlife watching year around,
- b) Verne Drive In Theater - Luverne, located on Hwy 75 just ½ mile south of Interstate 90, this totally renovated drive-in movie theater is one of the only remaining theaters in a large area. For that nostalgic look back enjoy movies that are available nightly throughout the summer. For information call: 507- 283-0007.
- c) Rock County Courthouse - Luverne, built in 1898 and restored in 1998, this Sioux Quartzite structure was remodeled, but kept the original flavor of the building, A great source of pride in the community.
- d) Hinkly House -Luverne, built in 1905 this is the home of former banker and businessman, RB Hinkly. The home has been restored to its former elegance. Of special interest are the tunnels under the home. Tours are available from Memorial Day to Labor Day. For information contact: Luverne Chamber 507-283-4061.
- e) Holy Trinity Church -Luverne, also built in the early 1900's this church is constructed with the Sioux Quartzite that was quarried north of Luverne at what is now, Blue Mounds State Park, On the National Register of Historic Places, tours are available by appointment. Call the Chamber:507'7.83'4061.
- f) Carnegie Cultural Center - Luverne, the former Carnegie Library has been converted into an arts center that has rotating monthly shows, Admission is free but fee will offerings are accepted. For a schedule of what is available call 507-283-8294,



- g) Rock County Historical Museum - Luverne, the former Masonic Temple is now home to the county museum with artifacts and collectible items covering several generations of Rock County citizens. The museum will help families with genealogy projects and is also available for tours. For more information: Call 507 -449-2115 ,
- h) Palace Theater - Luverne, the Palace was built in 1915 and was a former vaudeville theater, It has been restored and is currently used for regular movies as well as concerts, plays, and other community events. Tours of the theater are also available by contact the Chamber of Commerce at 507-293-4061.
- i) Fitzer Barn - Luverne, this barn, built in the early 1900's was moved to the Rock County Fairgrounds and is home to a great display of early farm machinery. It is owned and operated by the Historical Society and they may be contacted at 507-449-2115.
- j) Rock County Indoor Pool & Fitness - Luverne, this joint venture project between the city and the county is open daily for swimming classes, lap swimming, fitness, and can be rented for private parties. For information, call 507449-5036.
- k) Luverne Indoor Ice Arena - Luverne, located just 2 blocks west of Hwy 75, this center is one of the finest ice arenas in the area. It hosts hockey and figure skating and during the off season is available for a variety of events.
- l) Luverne City Park- Luverne, located at the east end of Main Street, ½ mile from Hwy 75 the park is a beautiful setting of shade trees, shelters, and a large amount of playground equipment. Within the park are two softball fields, a baseball diamond, tennis courts, basketball courts, and a skate park. The park is also home to the annual Arts in the Park arts and craft show that draws 1,000's to the community.
- m) Brandenburg Gallery - Luverne, the home of world famous wildlife photographer, Jim Brandenburg, is also home to a gallery of his works. Located on Main Street, just three blocks east of Hwy 75, the gallery has over 100 of his photos on display. Hours are 8:00 – 5:00 Monday - Friday and 10:00 - 5:00 on Saturday. Also open on Thursday evenings until 8:00 PM. Photos, videos, and books of Brandenburg's work are available.
- n) Blue Mounds Bike Trail - Luverne, this 6 mile trail begins at Main Street in Luverne and travels six miles along the bluffs of Blue Mounds State Park where it enters the park at the lower lake location. One mile east of Highway 75. Luverne recently completed a trail plan that incorporates this trail with three phases of loop trail. Phase 1 and 2 have been identified for funding through Legacy and TAP.
- o) Luverne Public Schools - Luverne, located directly on Hwy 75, the entire campus is in one location. A wide variety of events are held at the school including the very popular Tri-State Band Festival. For information: call 507-283-4091.



- p) Minnesota Veterans Home - Luverne, located on the north edge of town, directly on Hwy75, this is one of eight veteran's homes in the state of Minnesota. With its beautiful grounds and small lake, it is a quiet and peaceful for residents and family alike.
- q) Historical Walking Tour - Luverne, many of the historic buildings are located in the center of town, the tours begin at the Luverne Area Chamber of Commerce office located on Main Street in Luverne. Tour guide books are available at the Chamber office. This short historical tour will give you a brief glimpse of Luverne, "Gateway to Minnesota".
- r) Maplewood Chapel – Luverne, built in 1905, the Maplewood Chapel is on the National Register of Historic Places. The chapel was built to serve two functions. The upper room offered a place to perform funerals while the basement was a locked vault where bodies could be kept in the winter. Beautiful stained glass windows adorn the chapel. Although no longer used for funerals, the chapel has remained the same over these many years. Tours are available.

Touch The Sky Prairie - Luverne, this 800 acre site is a prairie reconstruction in progress. The land was purchased over the last two years and US Fish & Wildlife are currently restoring it back to native prairie. It has been designated as part of the Northern Tallgrass National Wildlife Refuge, The prairie is open to the public. It is located three miles west of Hwy 75 on County Rd 20 and then 1 mile north.

Blue Mounds State Park- Luverne, located one mile east of Hwy 75 at County Road 20, 4 ½ miles north of Luverne. Home of over 1500 acres of native prairie and the only state park in the system that is home to herd of 40 bison. There is a large campground with 70 sites featuring semi-modern sites, hiking trails, interpretive center, swimming beach, snowmobile trails, and much more.



Prairie Heights Bison - Luverne, Located along Highway 75, this working bison ranch has over 200 head of bison that are raised for breeding and meat. Tours of the herd are available along with bison meals, Bison meat is also available at the location. John & Jeanne Bowron are owners, phone 507-283-5136.

Rock River - Rock County, the river runs adjacent (within ½ mile) to Highway 75 for several miles through Rock County. Hunting areas have been developed and in the spring the river is used for canoeing and rafting down the river.

Section #5 Events

June

- Buffalo Days Luverne, Minnesota
- Watertower Festival Pipestone
- Outdoor Buffalo Dinner Pipestone, Minnesota

July

- Hot Dog Night Luverne, Minnesota
- Border to Border Triathlon Luverne
- Love of the Land Rendezvous Pipestone
- Chuck Wagon Cook-off Pipestone
- Red Hat Ladies Extravaganza Pipestone
- Dutch Festival Edgerton, Minnesota

August

- Civil War Days (2010) Pipestone
- Rock County Fair Luverne, Minnesota
- Weiner Dog Races Pipestone
- Tetonka Ha Rendezvous Lake Benton
- Pipestone County Fair Pipestone
- Lincoln County Fair Tyler

September

- Tri-State Band Festival Luverne
- Highway 75 King of Trails Market Day Luverne/Pipestone/ Lake Benton, and Ivanhoe

December

- Festival of Trees Pipestone,
- Winterfest Luverne, Minnesota

Appendix 2: Birding opportunities in the King of Trails Corridor.

The **Pine to Prairie Birding Trail** (www.mnbirdtrail.com) is Minnesota's first birding trail consisting of 45 sites, spanning more than 200 miles from Pine to Prairie. Over 275 species can be seen along the way. Birding trail logo signs are in place at a number of birding locations; however, complete signage is not currently in place. Interpretive signs are in place at featured sites; the future will bring additional signage and informational improvements. Currently, check with [Tourism Officials](#) at Detroit Lakes, Fergus Falls, Pelican Rapids, Roseau, Thief River Falls and Warroad for information on bird sightings and assistance with trip planning.

The International Pine to Prairie Birding Trail is a unique partnership between the NW Minnesota communities of Detroit Lakes, Fergus Falls, Pelican Rapids, Roseau, Thief River Falls and Warroad; Manitoba, participating agencies U.S. Fish & Wildlife Service, Minnesota Department of Natural Resources Non-game Wildlife Program, Explore Minnesota Tourism; the birding entities of the Minnesota Ornithologist's Union, Audubon Minnesota, Lakes Area Birding Club and the Agassiz Chapter of the National Audubon Society.



Minnesota River Valley Birding Trail

Spanning the Minnesota River watershed from its headwaters near the South Dakota border to its confluence with the Mississippi River in the Twin Cities, the MN River Valley Birding Trail promotes the beauty, wildlife, natural habitats, and recreational opportunities of this unique region. The trail serves to make birding more accessible, convenient and educational. www.birdingtrail.org



Source: <http://www.trails.com/stateactivity.aspx?area=14224>

Prairie Waters Region The area from Montevideo to Ortonville and north into Big Stone County and south into Lac Qui Parle County is one of Minnesota's premier birding regions. This area has two state parks and one national wildlife refuge plus numerous wildlife management and waterfowl production areas covering hundreds of acres, all of them accessible to birders.

North Loop: www.birdingtrail.org/PrairieWatersRegionNorth.html

South Loop: www.birdingtrail.org/PrairieWatersRegionSouth.html

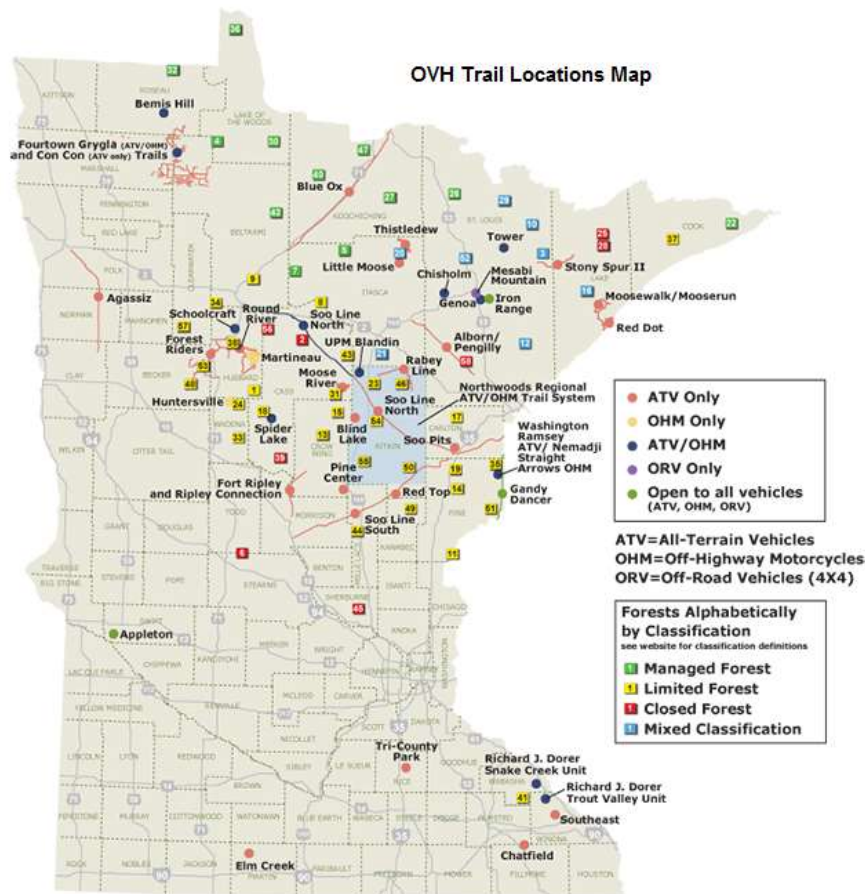
Prairie Coteau Region Grassy rolling hills, marshes, lakes and wetlands make Lyon and Lincoln Counties fascinating places to bird. Over 170 species of birds have been recorded in Camden State Park, located in the beautiful wooded Redwood River valley. This park is another island of green in a sea of intensely farmed land. Migrants and summer residents include many species of woodpecker, warbler, flycatcher, swallow, thrush and sparrow.

www.birdingtrail.org/PrairieCoteauRegionOverview.html

Salt Lake near Marietta is a great birding location.

http://www.dnr.state.mn.us/wmas/detail_report.html?map=COMPASS_MAPFILE&mode=item_query&qlayer=bdry_adwma2py3_query&qitem=uniqueid&qstring=WMA0091101

Appendix 3: Off Highway Vehicle (OHV) Trails in Minnesota



Source: <http://www.dnr.state.mn.us/>

Appleton Area Recreational Park (Swift County). From Appleton, go 1 mile east on Hwy 59. Once an old gravel mine, the Appleton Area Recreational Park covers 330 acres, including 20 miles of trails. The park is ideal for OHV enthusiasts of all skill levels, containing many miles of narrow technical trails, plus a motocross practice track. Past gravel mining activity created rolling terrain and excellent riding for the entire family. The City of Appleton is ATV-friendly, allowing travel on posted roads within city limits. The park is provided by Swift County.

Agassiz Recreational Trail (Norman County). In Fertile, along city streets. In Ulen, off Hwy. 32, north of Co. Rd. 34/Co. Rd. 16 Located near the North Dakota border, the 52-mile Agassiz Recreational Trail offers scenic views of the Sand Hill and Wild Rice rivers. The trail, running along an abandoned railroad grade, alternates through sparsely wooded stretches and iconic Minnesota farmland. This natural-surface trail is a multi-use trail. Please watch for hikers, bicyclists and horseback riders. Also keep an eye for abundant wildlife, such as deer, coyotes and squirrels. The trail is provided by Clay, Norman and Polk counties through the Agassiz Recreational Trail Board.

Appendix 4: Funded Transportation Projects in the MnDOT Work Program, the State Transportation Improvement Work Program for state and local projects in the corridor, and other known projects.

KOT Region 1 and MnDOT District 2:

- FY 2014: Arglye in Marshall county Safe Routes to School construction of sidewalk and improvements on 2nd Street, 3rd Street, and 4th Garfield Ave.
- FY 2015: US 75, from north end of C&G in Halstad to north end of C&G in Shelly, plus in slope repair from RP 285.2 TO 292.0, and on MN 200 from east end BR #54004 to west limits of Halstad, bituminous mill and inlay.
- FY2015: In Warren, from the Holiday Campground at the NE corner of Warren to island in the SE corner of Warren Ped/Bike Trail – Phase 1 (STIP)
- FY2016: US 75, from 12.2 miles north of US 2 to 0.2 MI south of MN 1 in Warren, bituminous resurfacing & replace 6 bridges and on MN 1, from east end of BR 9100 to east limits of Oslo, bituminous mill and overlay.
- FY2016: from US 2 to MN 1 in Warren, Bituminous resurfacing and replace 7 bridges.
- FY 2016: in Nielsville and in Climax – reconstruct urban streets.
- FY 2016: North of Hombolt, raise highway grade and replace bridge and approaches
- FY 2017: In Hendrum, reconstruct urban street.
- FY2018: US 75, from US 2 to Polk CSAH 19, mill & overlay and ped ramps & replace 2 bridges and approaches
- FY2018 US 75, in Hendrum, from south city limits to north city liits, reconstruct urban street and grade raise.
- FY2019 US 75, 3.1 miles south of Donaldson, 3.4 miles south of Donaldson, 5.5 miles south of Donaldson, replace bridges 8397, 6257, AND 6256
- FY2019 US 75 from 0.6 miles south of TH 200 to 0.4 miles north of TH 200, in Halstad, reconstruction.
- FY2019 US 75 from Railroad to Pleasant Avenue, In Warren, bituminous mill & overlay.
- FY2019 US 75 from 10th Street south to 4th Street north, in Hallock, bituminous mill & overlay.
- FY2020 US 75 from north limits of Hallock to Canadian border, bituminous mill and overlay, replace bridges 1208 AND 1707
- FY2021 US 75, in Kennedy, reconstruct.
- FY2021 US 75, 2.8 miles north of Warren, 3.4 miles south of Stephen and north of Donaldson, replace bridges 2238, 6254, 4102 AND 4103.
- FY2121 US 75, 2.2 miles south of TH 2, in Crookston, rehab bridge 60523

KOT Region 2 and MnDOT District 4:

- FY 2014: Lake Breckenridge Trail on Wilkin CSAH 10 from Breckenridge to Lake Breckenridge, multi-use bituminous trail.
- FY2014: Moorhead – from Oakway to I-94 o SE Main, bituminous mill ad surfacing of road and shared use path.
- FY 2015: Geometric Improvements at Intersection of 11th Street and Main Ave; mill and overlay,

reconstruction and signal work on 11th Street from Center Ave to Main Ave; accessibility improvements in Moorhead.

- FY 2015 – road realignment, bridge replacement and construction railroad overpass near Kent
- FY 2016: Reconstruct Highway 75 Interchange over I-90.
- FY 2016: replace Bridge over Doran Slough.
- FY 2018 (tentative): Milling and bituminous surfacing from Wilkin CR 20 to Wilkin CR 184

KOT Region 3 and MnDOT Districts 7 and 8

- FY2015: 8.4 miles, M & O in the Pipestone area, CSAH 9 to US 30
- FY 2015: Overlay and box culvert, the City of Luverne is leading the project.
- FY2016: 11 miles, 4" M & O, Canby to Yellow Medicine CSAH 3
- FY 2016: 5.4, M & O, Pipestone to Pipestone Creek
- FY 2015: Luverne Loop Trail Phase I (Legacy)
- FY2017: Luverne Loop Trail Phase II (STIP).
- FY 2018: Mill to concrete & replace bridge, S. jct. MN 23
- FY 2019: 3.7 miles, Twp 127 to S. limits of Madison, 3" M & O
- FY 2022: 17 miles, MN 19 to Canby, 3" M & O

Appendix 5. KOT Work Program 2015 - 2024

The KOT Coalition revisited the Vision, Mission, Values, Supports & Challenges, and Goals for the King of Trails Scenic Byway in the Spring of 2014. Figure 3 represents this planning process results. The goals with a timeline are the Byway priorities.

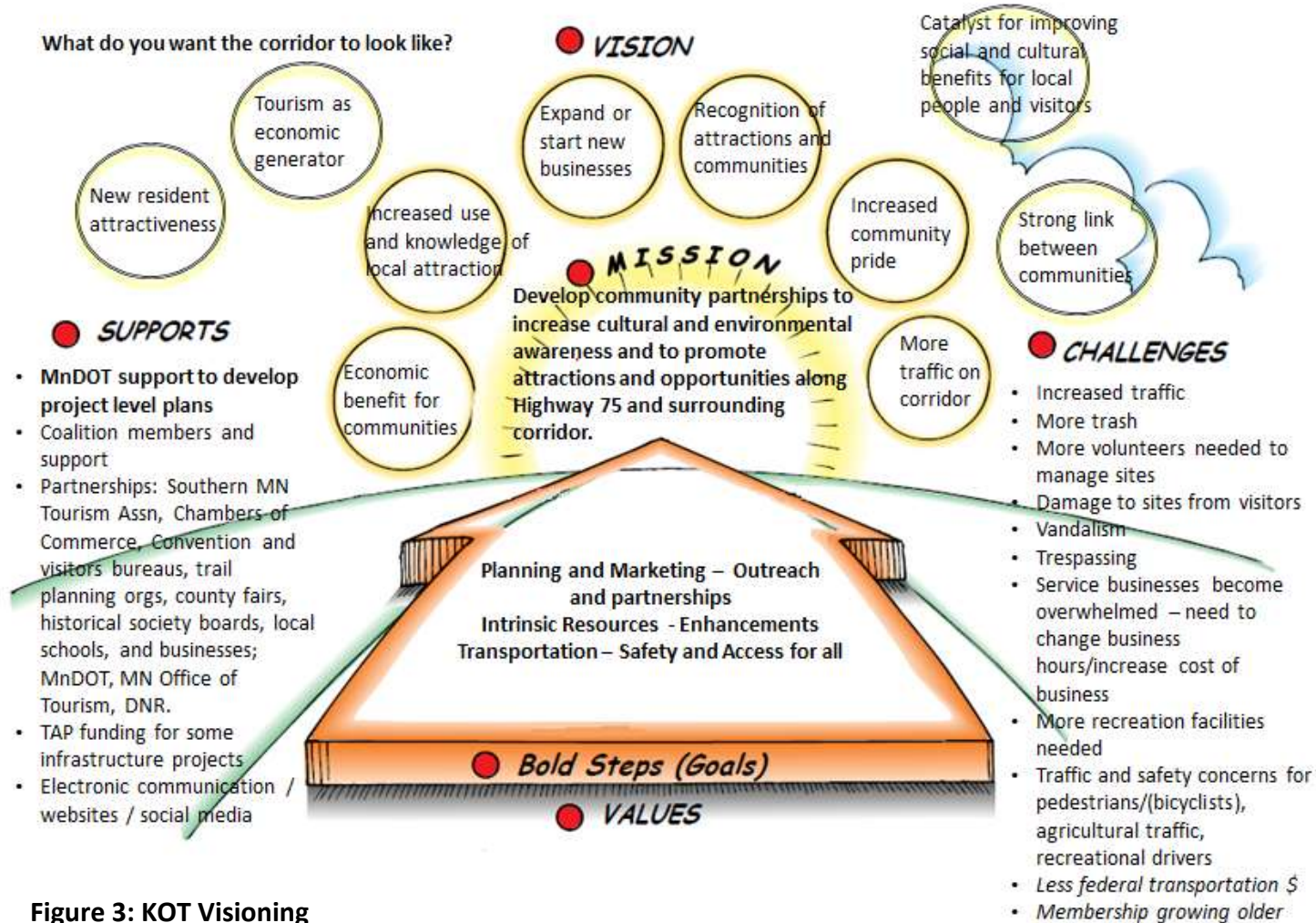


Figure 3: KOT Visioning

©1996 The Grove Consultants International

Planning and Marketing – Outreach and Partnerships. Marketing is the key to all activities within the King of Trails Corridor, from membership development to support of infrastructure activities to the enhancement of a visitors experience in the corridor. Priority Planning and Marketing projects are as follows: Revitalize KOT Coalition thought New Membership; Marketing Plan Update and Maintenance; Marketing Tools. Resources (funding) for implementation of planning and marketing is anticipated to come from various sources including, but limited to members, grants such as Transportation Alternatives Program when eligible, DEED, and partnerships.

Revitalize KOT Coalition through New Membership

The King of Trails Coalition was formed in 1996 and the original membership is growing older. New members are needed to bring revitalization, innovative ideas, new talents and energy to the KOT Coalition.

2015-2016 - Develop a marketing strategy to recruit new KOT Coalition members, increase Coalition membership, and increase knowledge of the King of Trails. The KOT Coalition acknowledges that this endeavor will require from outside the coalition; and development of an updated membership brochure that will include benefits of being part of the coalition and a template for members to use when speaking with groups to encourage membership and partners of the Coalition.

Actions:

- 1) To develop organizational structure and marketing tools to revitalize the membership, *connect with*:
 - The University of Minnesota Sustainable Development Partnership for resource assistance (student / funding).
 - Higher education schools in the corridor. Classes / Students could provide materials needed to market and expand membership; provide technical expertise with web-meeting facilities; and social media.
 - The Initiative Foundations

2) *Membership Tool development:*

- Membership Brochure updates to include the benefits of becoming a coalition member.
- Develop speaking points for Members to use for speaking to groups, organizations, businesses about membership.

3) *Recruitment of Members and Partners.* KOT Members and Partners actively recruit new members and partners using tools above.

- 2014-2015 work with higher education schools and foundations to provide focus to the Coalition on Membership recruitment strategies and resource assistance.
- 2015- and on-going - continue recruitment of new members to the coalition and encourage younger members to take leadership roles.
- 2015 and on-going. Survey membership to determine changing needs, update byway information, visitor information, and contacts.
- 2014 and on-going. Report to membership and Partners at annual meeting on status of KOT Revitalization.
- 2014 and on-going. Increase communication to keep membership active and knowledgeable of activities on the corridor.

- 2015 and on-going as membership increases, encourage Section communication / meetings to share activities, events, and development of activities and events.
- Initiative leader and team: Responsibility will be assigned by the KOT Coalition.
- Key activities: Development of a new membership brochure to identify the benefits of being a KOT Coalition Member as well as KOT expectations as a member; outreach by Byway members for speaking engagements to civic organizations and units of government and other partners on the benefits of byway membership; connect with new partners to assist in membership revitalization.
- Resource requirements: Time to develop the updated membership brochure, printing costs, distribution (postage); time investments in presenting to civic organizations and units of government and other partners. Funding sources: membership dues, grants, and volunteer time.
- Interdependencies: Membership is strength of an organization. The greater number of members, the greater number of voices to share responsibilities of the membership, its outreach, and interaction with partners. Partnering with Schools and foundations will allow for new ideas for the revitalization of the membership. An example of interdependencies of the membership would be interaction with a transportation initiative to be involved with the Minnesota Department of Transportation project planning process and be able to provide input in to the process.
- Milestones: Assistance for connecting to partners; new updated membership brochure, develop key points for

presentations to groups, partners, and units of government. The initiative will be on track when the Coalition increases its membership base.

- Performance metrics: Number of members and new members each year and number of presentations.

KOT Coalition Membership Meetings & Internal Communication.

To maintain communication of the Membership, the Corridor was divided into 3 Regions. The three Regions will have members who serve as an Executive Committee.

2015 and ongoing. Hold at least two Corridor meetings meeting per year, with a goal of four meetings per year. Draft minutes sent out to all members. The annual meeting will include:

- Review visitor survey data to help determine changes needed in the work program to stay current with technology and customer needs.
- Review membership and outreach and provide direction.
- Byway activity reports
- Receive input to help organize and connect events and activities and overall marketing endeavors such as website, Magazine, brochures.
- Future. As membership grows and is more active, modify Executive committee to Section leaders and hold Section meetings rather than Region meetings.

During 2000-2012, KOT marketing included packets of Black-eyed Susan seeds

Marketing Plan Update and Plan

Maintenance. The Marketing Plan is the primary guidance document for marketing events, activities and places with a goal to increase the awareness of the King of Trails Scenic Byway; which will result in enhancing a visitors experience in the Corridor. The Plan itself should be reviewed at a minimum of every 3 years to incorporate new marketing strategies and retire strategies that are not working.

The Marketing Plan will enable the KOT coalition to:

- Act as a catalyst for improving social and cultural benefits for local people and visitors through recognition and increased knowledge of attractions and events;
- Build strong links between communities, Community Relationships, and Partnerships; and
- Use tourism as an economic generator resulting in increased visitors, more traffic in the corridor, and being an economic benefit for communities.

Deliverables: A Marketing Plan with strategies and tools to market intrinsic resources in the corridor; a process to review the effectiveness of Marketing and Visitor desires. A report to the KOT Coalition will be provided at the Annual meeting and shared with the members and partners.



- Initiative leader and team: The Marketing Plan update will be led by 3 members representing the 3 Regions of the Byway and Partners.

- Key activities: Review current marketing outreach (website, brochures, King of Trails Magazine / Guide); connect with partners with the expertise and talent to assist with updated techniques, including new technology (social media); develop protocol for Marketing Plan Review and updates to maintain its effectiveness.

- Resource requirements: Connect with resources within the corridor to assist the Marketing Team in development of the Marketing Plan and promotional materials. This will include: Technical Schools and

colleges, the Initiative Foundations, Office of Tourism, and other talents in the Corridor.

- Interdependencies: This initiative will have the impact on all other initiatives of the Scenic Byway.

- Milestones:

- Complete update of the Marketing Plan 2015-2016

- Provide annual report to the KOT Coalition on achievements from the Marketing Plan.

- Update a minimum of every three years.

- Performance metrics: Metrics will be identified for each of the subarea in the marketing plan.

King of Trails Signage – Erecting and Maintaining³. MnDOT has the responsibility of erecting and maintaining the signs along the King of Trails. The KOT By-way has identified the need to replace the signage in CY 2015-2016. In order to complete this task, the following process is to be followed:



- The KOT will communicate with MnDOT to coordinate the sign maintenance or replacement along the route.
- MnDOT's Sign Shop maintains the graphics for the King of Trails Signs. A 2014 approximate price quote is \$63 per sign with a clear UV protectant. MnDOT uses proper sign specifications.
- The coalition will work through the Districts for sign installation – either at no charge or up to \$125 per sign (2014 \$) to install.
- MnDOT will identify where the placement of the signs.
- Resources: special funding request to communities, volunteers, MnDOT personal, city public works staff, and grant requests.
- Consideration on what to do with the old signs, such as use as membership plaques, sell for fund raising, etc.

Sign replacement guidance is on page 77 of this document.

³ In 2002, 70 signs in 22 communities were installed at each Hwy 75 entrance in each community. Installation was by city public works from each community on the community name/population entrance sign.

King of Trails Magazine: The Hwy 75 Coalition created a travel magazine for tourists and visitors that highlight activities along the route. Originally a paper version with ads was developed and made available through CVBs, chambers, visitor centers, museums and other King of Trails member locations; a second version will be web-based with the ability to update on an annual basis.

- Deliverables: 2015 and annually thereafter, a King of Trails magazine that will be web based accessible through the internet and printable.
- Initiative leader and team: Appointment by KOT.
- Key activities: Update information in the magazine; obtain electronic copy of last version; work with a local company to provide service at low cost to update the document; post on website; update on an annual basis.
- Resource requirements: Identify and partner with local companies that have the software program to assist in updating the magazine; coalition members will provide information for the magazine update in a timely basis. Funding from dues, and Office of Tourism.
- Interdependencies: As a major marketing piece by the entire byway by providing information about activities along the entire route, this marketing piece affects all areas of the byway.
- Milestones: Obtain the original file; find company with software; format document so little additional information is needed for the annual updates; timely member updates.
- Performance metrics: Achievement of the key activities; on-going success of the project would be to monitor the hit or downloads from the website.

Website: The Coalition currently maintains a website. The site requires regular updates and more detailed information for the visitor.

- Deliverables: Annual update of the website.
- Initiative leader and team: Pipestone Chamber and CVB.
- Key activities: Updating the website site quarterly.
- Resource requirements: All Coalition members need to review the website information on a quarterly basis and provide updates to the Pipestone Chamber and CVB to maintain current information. Time to update the website will be required by the Pipestone Chamber CVB. Website fees will also be required. Funding from dues.
- Interdependencies: The ability of the Pipestone Chamber and CVB to update the information will be dependent on the timely submittal of information for the website.
- Milestones: An annual update of the website is the minimal acceptable milestone; a goal of quarterly updates is what the Coalition will strive towards.
- Performance metrics: Annual report to the KOT coalition on the status of the website and how often updates are made.

Information Distribution: King of Trails information will be available at key sites including the chambers of commerce and CVBs, travel information centers, museums, state parks, Pipestone National Monument, Big Stone National Wildlife Refuge, hotels, campgrounds, specialty shops and festivals, and website. The Coalition will provide each location with marketing materials and other resource information about the corridor to enable their staff will be knowledgeable about attractions and

events along Hwy 75. Existing marketing partnerships will be expanded with key stakeholders in the corridor to increase the visibility of the King of Trails.

The Coalition already has an established relationship working with the Pipestone Chamber and CVB. The Coalition uses their phone number and address on all publications as the point of contact for information about the King of Trails. The coalition also maintains a website (www.highway75.com) for the purposes of directing travelers along Highway 75.

Measurement of the numbers of brochures, and hits on the website will provide data to the Coalition on the effectiveness of information distribution.

Additional areas for information distribution are other websites such as: <http://www.roadsideamerica.com/> and <http://www.roadsideamerica.com/map/mn>

Other corridors that overlap with the King of Trails include: Prairie Passage, Pine to Prairie Birding Trail, Minnesota River Valley Birding Trail, Minnesota River Valley National Scenic Byway, Waters of the Dancing Sky Scenic Byway, and Laura Ingalls Wilder Highway. The King of Trails will work to cross promote these corridors and share information, resources and promotions avoiding all possible conflicts with other promotions.

Tourist Information Template to provide consistent reporting of visitor data. Following the update of the Marketing Plan, the Coalition will develop a template to create a more efficient / consistent system for gathering information on visitors tourism along the route; to include: numbers of visitors, economic effects and other information beneficial for the entire route as well as

the local area; and be located in appropriate places in the community. The information will be reported to membership at their annual meeting and used for adjusting the work program priorities.

- Deliverables: Development of a visitor survey template that will gather a common set of information for statistics of visitors in the Byway.
- Initiative leader and team: Led by the KOT Coalition.
- Key activities: Members will be asked what questions they currently ask and information needed; template development to serve multiple purposes.
- Resource requirements: funding from dues, grants, volunteers; partnerships with talent to assist in this endeavor such as Office of Tourism.
- Interdependencies: the impact of this action will provide a common basis for reporting visitor information along the byway; information used to influence development of additional initiatives (ie mini tours, and camping facilities).
- Milestones: Development of a survey / data collection tool; number of partners utilizing the tool; test period to determine if the tool collect data that is meaningful. These can be addressed by the /coalition at their annual meetings.
- Performance metrics: Measurement of the success will be use of the template and annual reporting of the statistics.

Unique Events and Current Events. On-going: Continue to create things that bring attention to the Highway 75 King of Trails. Contact local radio, TV and newspapers to advertise and report on these events. Create new interest in events that have been taking place annually like the Fall Marketplace and the

Pipestone Civil War Days.

Planning and Marketing activities for future consideration follow and will be developed with the following framework or another similar to provide marketing guidance.

- Deliverables: What will be the results of the initiative? How will "success" be measured?
- Initiative leader and team: Who is responsible and involved in the work?
- Key activities: What action steps need to be undertaken to achieve the deliverable?
- Resource requirements: What investments (people, equipment, time, and finances) will be needed to carry out the initiative?
- Interdependencies: How will the initiative impact other functions or areas of the organization? How will it affect other initiatives?
- Milestones: What are the major events, accomplishments, or key decision points that are anticipated? How will you know when and if your initiative is on or off track?
- Performance metrics: What will you measure to gauge progress on your initiative? How will you utilize these performance metrics to tell if your initiative is on or off track?

Mini-trip Packaging. There is an interest for day and weekend trips that encourage families to visit their local communities and experience the historic events that take place, visit museums, hike the trails, go birding and bring the history alive for their

children and adults. The Coalition will research and consider packaging and marketing these events and activities as mini-vacations as the demand is identified.

Focus area marketing. A focus on marketing specific attractions and events would require the identification of the facilities, events and partners; and developing methods for marketing and implementation. This work activity may require talent from an outside source, such as higher education. Focus areas identified for future consideration include:

Informational Media: The Highway 75 Coalition will collect information to create a sharable media (DVD, video streaming, etc). The purpose would be to educate families as they travel. It would contain local information about the history, museums, events, places of interest, birding trails, fishing, hunting, camping, snowmobile trails, and other information pertinent to the area. The media can be listened to while people are traveling or prior to planning their trip.

Activity Book: Creation of an activity book for school children to be used in conjunction with their books when studying Minnesota history. This book would be focused on historic events, sites, community events, and other important activities

that have or are taking place along Highway 75.

Highway 75 Kiosk location.

Way-finding signage. Locations to be determined and prioritized at a later date.

Increase Community Marketing

Include KOT in annual State Marketing Plans

Development of By-way Ambassador volunteer group to assist with site education.

Work with communities:

- to offer hospitality training to help businesses be pleasant and helpful to visitors.
- to find ways to increase visual attractiveness.

Intrinsic Resources – Events and the Enhancements of resources (not transportation related)

Priority Intrinsic Resource projects are as follows: continued event development and marketing; connecting attractions within sections and regions. Resources (funding) for implementation enhancing intrinsic resources is anticipated to come from various sources including, but limited to members, grants such as Transportation Alternatives Program when eligible, historical societies, partnership, and others.



Highway 75 Market Day. This is an annual coordinated event held the 2nd Saturday in September and is hosted by communities along Highway 75. Community vendors openly market their goods at select locations. Shoppers are invited to move from town to town taking in all the market has to offer as well as experiencing the communities and the sights of Highway 75. 2014 and On-going Continue to assist in the promote Market Day as an annual event along the corridor.



- Deliverables: What will be the results of the initiative? How will "success" be measured?
- Initiative leader and team: Who is responsible and involved in the work?
- Key activities: What action steps need to be undertaken to achieve the deliverable?
- Resource requirements: What investments (people, equipment, time, and finances) will be needed to carry out the initiative?
- Interdependencies: How will the initiative impact other functions or areas of the organization? How will it affect other initiatives?
- Milestones: What are the major events, accomplishments, or key decision points that are anticipated? How will you know when and if your initiative is on or off track?
- Performance metrics: What will you measure to gauge progress on your initiative? How will you utilize these performance metrics to tell if your initiative is on or off track?

Camping Facilities. Increase or enhance camping facilities.

The Highway 75 Coalition will inventory the facilities currently available, facility improvements planned, and identify needs for additional facilities or facility improvements to provide the camper with more opportunity to enhance their visiting experience

- Deliverables: Survey to determine inventory and needs; support development of improved camping facilities.
- Initiative leader and team: To be assigned by the KOT Coalition in 2016.
- Key activities: Review the inventory of camping facilities within the KOT Corridor in 2016; use the survey tool results to determine where a need to expand or enhance camping facilities; work with camping facility owners to secure resources needed to expand / enhance facilities.
- Resource requirements: Volunteer tie to conduct the survey to determine need, working with facility owners; identification of engineering and funding resources; support funding requests.
- Interdependencies: The Survey tool will play a large part of assisting in determining need for additional camping facilities.
- Milestones: Survey tool, identification of improvements needed, improvements completed.
- Performance metrics: progress will be gauged in the planning process (inventory and use of the tool), and through working with partners to assisting in finding resources for enhancement or additional facilities.

The following activities have been identified, however at this

time are not within a 1-3 year priority to begin implementing.

Living History of Highway 75. Create a living history. A network of volunteers and local students or citizens would be developed and trained to visit and write or record the history of which the local people have firsthand knowledge. The history needs to be produced in a manner that would save it for future generations. Work Program. Communities in the KOT Sections will work together to have more historic related events to create an awareness of all the history in the corridor. This will be initiated at a future date.

Multi-Generational Family Friendly Areas. Identify and market family friendly areas and events. These would be accessible for parents with strollers, people on crutches, walkers or in wheelchairs. Implementation at a future date.

Golfing. There are many golf courses along the route that could be identified and marketed through the website and specialty brochure development. The need for this will be identified at a future date.

Historic Sights and Events are an important element of the visitors experience in the byway. Information of these will be maintained on the website in the Highway 75 Magazine.

Walking tours are available as one of the attractions in several communities within the corridor and are identified in the Highway 75 Magazine.

War memorials. There are many war memorials within the KOT Byway Corridor; identification of the local and information about the memorials is a future activity of the coalition.

Historical Museums maintain a record of the rich history of the scenic byway corridor. Partnerships with the Museums are a future activity.

Shopping. Shopping is a main activity of tourists that visit

Minnesota. There are many unique shops along Highway 75 that could be marketed together.

Trails – see transportation for more specific projects.

Birding – potential watershed partnerships.

.

Transportation – Safety and Access for All.

Transportation Infrastructure Projects involve a variety of projects: road and bridge improvements, bicycle and pedestrian facilities (safe routes to school, trails, walking facilities, ADA compliance), as well as projects that are intended to keep the traveling public safe. Resources (funding) for implementation of Transportation projects is anticipated to come from various sources including, but limited to members, grants such as Transportation Alternatives Program when eligible, MnDOT, County and city Highway Departments, Railroads, and other partnerships.

Participation / input into the MnDOT project planning process.

- Beginning in 2015. The King of Trails Coalition will communicate with MnDOT Districts to receive notice of the Minnesota Department of Transportation Projects along Highway 75 and within the King of Trails Corridor.

The purpose of this notification is to enable KOT members to identify issues that affect visitors (i.e. safety concerns, access to attractions, pull offs, etc.) and / or indicate support of highway projects.

Regional Development Organizations as Transportation Partners

- Beginning in 2015 and on-going. The King of Trails Coalition will initiate and maintain contact with the Transportation Planner at Regional Development Organization in Regions 2, 4, 6W and 8 who may be able to assist in communication of transportation infrastructure project issues, assist with comment on projects to the respective road authorities, and be a technical assistance resource.

Transportation Infrastructure Projects.

- On-going. Bicycle and pedestrian facilities provide an

enhancement to not only local and regional residents, but enhance a visitors experience along the corridor. There are many local bike and pedestrian facilities within the corridor. *The KOT supports development and rehabilitation of the facilities that provide a higher level of visiting experience.* Specific projects include:

- Planning of the Casey Jones Trail from Luverne to Split Rock Creek State Park and development of the Casey Jones Trail from Luverne to Pipestone to Slayton.
- Provision of safe access to the Casey Jones Trail Trailhead at Pipestone.
- Pedestrian / Bicycle connection from Hole in the Mountain Park at Lake Benton to Lake Benton lake.
- 2014-2015 Review condition of existing Scenic By-way Signs; 2015-2016 Work with MnDOT to replace By-way signs.
- Canby - Trail rehab Del Clark Lake at Stonehill Regional Park.
- Development and Implementation of ADA Access Plans.
- ADA Access to Attractions
- Construction of turnouts, overlooks, and view areas.

- Wildlife management:
- Vegetation management:
- Historic Preservation / rehabilitation of Transportation Facilities as identified in the corridor.
- Support of Safe Route to School initiatives within the corridor.
- Development of local and regional trails to increase outdoor recreation opportunities.
- Development of walking tours that highlight attractions and events.
- Safety on the Corridor. The Coalition members are concerned that for visitor safety. *Example of recent safety enhancement: Recently Polk County Road 21 and Highway 75 North of Euclid had T-Bone crashes every year. MnDOT installed flashing signs when traffic from opposite direction was approaching. The Crashes have been significantly reduced since installation about one year ago. Road has an angle that blocks vision for 7 seconds when aligned with the windshield A-ARM bracket.* Other locations for road authorities to consider are:

KOT Region 1

- Hallock, MN about 2.5 miles south on TH 75 - The Canola plant needs work done to construct a left hand turn lane and to lengthen the right hand turn lane. Trucks are now longer than the previous maximum of 48' (53'now or if double trailers even more). A possible source of funds would be through the State TED program.
- Hallock, MN –the large volume of heavy commercial traffic (generated by the canola plant operations located

at 2100 Hwy 75) has affected the condition of TH 75 in the City of Hallock. Dips over water and sewer lines in Hallock are becoming more obvious.

- Humbolt, MN about ½ mile north of the community at TH 75 and 210th Street experiences regular flooding over the road (normally in spring).

KOT Region 2

Big Stone Co – no safety projects identified at this time..

Swift county concerns:

- Curve at the intersection of Swift CSAH 33,
- Intersection of Swift CSAH 12 and TH 75.
- A need to widen the shoulder and improve the in-slope on TH 59 south of CSAH 3 in Yellow Medicine County.

Lac qui Parle County:

- Deer crossing are hazards at areas that have Big Stone National Wildlife Refuge and Wildlife Production & Management Areas.
- Other safety concerns along Hwy 75 would be people fishing on the bridge by the Hwy 75 dam by the Big Stone National Refuge. Local suggestion on correction is to lower the speed limit because the cost of adding a walking / fishing deck onto the bridge would be very prohibitive.

KOT Region 3

- Luverne, MN. TH 75 and Dodge, Adams, and Barck Streets adjacent to the Luverne School District campus, when the students are going and leaving the school with the assistance of crossing guards.

- Lake Benton, MN area. TH 75 Post and cable guard rail just south of Lake Benton to just south of Lincoln Co. CSAH 9 west, multiple locations – upgrade guard rail or fill inslope of TH 75 to eliminate need of guard rail.
- Pipestone, MN area. No guard rail but high fill and steep inslope south of Pipestone Co CSAH 11 (east side of road) – add guard rail or fill inslope of TH 75.
- TH 75 and TH 14. Turning movements at both intersections to improve crossings. Suggested is a bigger radius on the south intersection for trucks coming from the west turning south and safety improvement for turning traffic on the north intersection.
- Lake Benton, MN area. Speed of traffic coming into Lake Benton, due to the drop in grade coming into town; suggested improvement is enhanced speed warning signs.
- TH 75 and Lincoln CSAH 9 intersection going west. Steep grade approach coming to TH 75 and blind intersection. Need to improve the approach grade of CSAH 9 and cut back sight corners. (Note: Lincoln County is planning an improvement for this next year if everything works out)

Off Highway Vehicle Parks (OHV)

- 2015 and on-going. Monitor interest / requests for the development of Off Highway Vehicle (OHV) Parks. The KOT Coalition recognizes that Off Road Vehicle Parks are gaining popularity as a visitor activity. One source to gauge interest for this activity in through the visitor surveys.

Trails – support marketing and development of trails

Several types of trails exist within the corridor. The KOT coalition will support the improvement of trails and let visitors know where they are and what features they have.

- Birding - The Agassiz Audubon Society is located in Region 1 of the KOT and has developed a following of persons interested in birding and has a Facebook presence. Pairing with existing birding organizations, local bike trails groups, and snowmobile trail organizations along the corridor will help bring recognition to both the KOT and the birding groups. Appendix 2 identifies known birding trails within the KOT corridor.

Work Program. On-going. The coalition will identify the existing birding groups (Appendix 2) and initiate contact to determine if they would be interested in pairing with the KOT for marketing their activities. The Byway coalition will also support access to birding locations (ie ADA access). The Coalition will work with the birding groups to determine how marketing would occur – how often updated, with roles and responsibilities identified.

- Biking and hiking – The coalition supports outdoor activities such as hiking and biking, as both vital for healthy active living but also as activities visitors seek when traveling.
- Snowmobile - The coalition supports snowmobiling as one of the outdoor winter activities. Snowmobile organizations in Minnesota are well developed pairing with the groups to aid in marketing would be beneficial for both outdoor recreation and the KOT.

Work Program On-going. The KOT coalition will continue to maintain communication with the snowmobile clubs to promote tourism.

- Off Highway Vehicle (OHV) Parks– the coalition recognizes that Off Road Vehicle Parks are gaining popularity as a visitor activity.

Work Program – on-going. Monitor requests for this type of activity.

Transportation Alternatives Projects (TAP)

Scenic By-ways are eligible to apply for TAP program funding for eligible projects. These include:

- Pedestrian and Bicycle facilities
- Conversion of abandoned railroad corridors

- Construction of turnouts, overlooks and view areas
- Outdoor advertising management
- Historic preservation and rehab of historic transportation facilities
- Vegetation management and vegetation management to provide erosion control
- Storm water Mitigation management
- Archeological Activities
- Reduce vehicle cause wildlife mortality / maintain habitat connectivity

Projects may be identified for TAP funding throughout the year and brought to Coalition Meetings for support.

KOT Trail signage replacement Guidance details

Heather Lott, PE Minnesota DOT State Signing Engineer 651-234-7371 (Oct 2014) spoke with representatives from each of the MnDOT Districts which the KOT passes through. They all agreed that the KOT signs can remain beneath the Population signs. We ask that the communities follow the guidelines we have in place for community recognition signs (DARE, Tree City, etc) mounted beneath population signs. These guidelines are as follows:

Each KOT sign is to be mounted below the city population sign in accordance with the following guidelines:

1. If there are no in-place Community Recognition signs, the KOT sign should be attached to the sign post furthest from the roadway directly below the population sign panel.
2. If there is one in-place Community Recognition sign on one sign post, the KOT sign should be attached to the other sign post directly below the population sign panel.
3. If there are two in place Community Recognition signs (one on each sign post) and the community wants to retain both in-place signs, the city has to pay an up-front cost of \$200 for MnDOT to modify each population sign structure (to raise the population sign panel to nine feet and add a horizontal stringer to attach all three signs [the two in-place signs and the KOT sign]). The total square footage of all three signs cannot exceed 12 square feet.
4. If there are two in-place Community Recognition signs (one on each sign post) and the community decides to remove one in-place sign from one sign post to accommodate the KOT sign, the KOT sign is to be attached to that sign post.
5. If there are three in-place Community Recognition signs attached to a horizontal stringer below the population sign, one of the in-place Community Recognition signs must be removed and replaced with the KOT sign.
6. Cities are responsible for installing the KOT signs, unless other arrangements are made separately with the specific District Traffic Office contact (see #7) or his/her designee.
7. Each city should contact the District Traffic Offices before installing KOT signs since installation and maintenance of the signs by the city requires a MnDOT permit: <http://www.dot.state.mn.us/trafficeng/contacts.html>

Holly Slagle, State Scenic Byway Coordinator, Office of Environmental Stewardship, 651-366-3623 (Oct 2014)

Ordering and fabricating signs by state sign shop ensures signs are made to specifications. MnDOT's Sign Shop has the graphics for King of Trails signs. Dave Finkelson provided a price quote of approximately \$63 per sign with a clear UV protectant. If you go through our Mn/DOT Sign Shop the proper State Signage Specs are used. Dave's number is 651-366-4413.

Appendix 6. Potential Scenic Byway Funding Sources

Funding Source	Responsible Entity	Infrastructure	Non-Infrastructure	Notes
Scenic Byway Solicitation	MnDOT	X		Final solicitation occurring in CY 2015
Transportation Alternatives Program (TAP)	ATPs / MnDOT	X		http://www.dot.state.mn.us/map-21/tap.html
Regional Sustainable Development Partnership	U of M		X	http://www.extension.umn.edu/rsdp/
Community Development Funding	DEED	X		http://mn.gov/deed/government/financial-assistance/community-funding/
Greater Minnesota Public Infrastructure Program	DEED	X		http://mn.gov/deed/government/financial-assistance/business-funding/infrastructure-grants.jsp
Explore Minnesota Grant Program	Explore MN		X	http://www.exploreminnesota.com/industry-minnesota/ways-to-get-involved/grants/
Parks and Trails Legacy Grant Program	DNR	X		http://www.dnr.state.mn.us/grants/recreation/pt_legacy.html
Outdoor Recreation Grant Program	DNR	X		http://www.dnr.state.mn.us/grants/recreation/outdoor_rec.html
Highway Safety Improvement Program (HSIP) Rail-Crossings	MnDOT	X		
General transportation programming	MnDOT; Counties; Cities	X		Share Byway needs with responsible roadway entities; some may be able to be accommodated through standard transportation programming processes.
Minnesota Geospatial Information Office	MnGeo		X	Not a funding source but may be used as an infor resource http://www.mngeo.state.mn.us/
Minnesota State Demographic Center	Admin Minnesota		X	Not a funding source but may be used as an infor resource http://mn.gov/admin/demography/
State Health Improvement Program (SHIP)	MDH	X	X	http://www.health.state.mn.us/healthreform/ship/

County Fair Arts Access and Cultural Heritage Grants	MDA		X	http://www.mda.state.mn.us/en/grants/grants/countyfair.aspx
Recreational Trails Program	DNR	X		http://www.dnr.state.mn.us/grants/recreation/trails_federal.html
Local Trail Connections Program	DNR			http://www.dnr.state.mn.us/grants/recreation/trails_local.html
Regional Trail Grant Program	DNR	X		http://www.dnr.state.mn.us/grants/recreation/trails_regional.html
Other DNR Grants	DNR	X		Depending on the project, other DNR grants may be appropriate http://www.dnr.state.mn.us/grants/index.html
Minnesota Historical and Cultural Heritage Grants	MHS		X	http://legacy.mnhs.org/grants
RDC Transportation Planning Grants	MnDOT / RDCs		X	
Private Foundation Grant Opportunities	Varies			http://www.lmc.org/page/1/private-grant-sources.jsp
Chambers of Commerce	Varies		X	Local chambers may have funding available to assist with byway activities related to economic development
Byway Membership Fees	Byway groups		X	Consider charging a byway membership fee to accomplish small projects and/or provide match to other grant opportunities
Advertising Revenue	Byway groups		X	Sell advertising in byway publications to cover costs
Regional Arts Councils			X	http://www.arts.state.mn.us/racs/
Hazard Mitigation Assistance	FEMA	X		https://www.fema.gov/hazard-mitigation-assistance
Federal Land Access Program (FLAP)	FHWA	X		http://flh.fhwa.dot.gov/programs/flap/
Minnesota Design Team	AIA Minnesota		X	http://www.aia-mn.org/get-

SHPO Grants	MHS		X	involved/committees/minnesota-design-team/ http://www.mnhs.org/shpo/grants/
Greater Minnesota Parks and Trails (Legacy funds)	GMPTC		X	http://www.legacy.leg.mn/gmrptc
