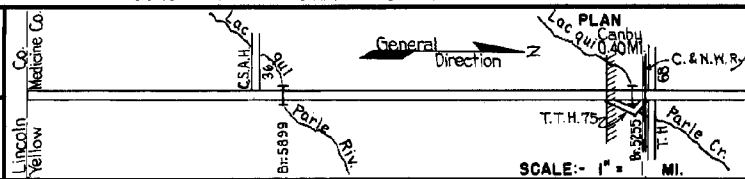


PREPARED BY
HIGHWAY PLANNING SURVEY
IN COOPERATION WITH
U. S. PUBLIC ROADS ADMINISTRATION

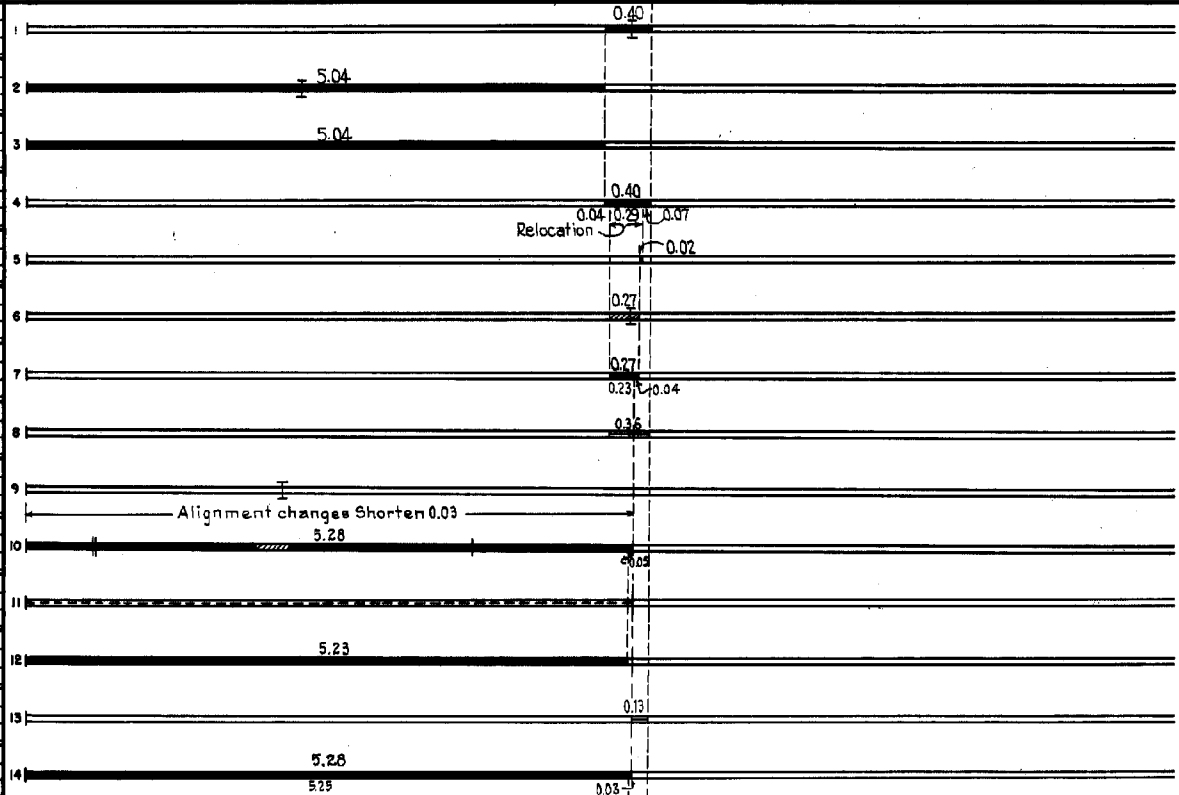
STATE OF MINNESOTA
DEPARTMENT OF HIGHWAYS
ROAD LIFE STUDIES
CONSTRUCTION PROJECT LOG RECORD

CONTROL SECTION 8710
TRUNK HIGHWAY 75
COUNTY Yellow Medicine
DISTRICT 8E

LIMITS: S. Co. Line - Jct. T.H. 68 in Canby



YEAR BUILT	PROJECT N°	DESCRIPTION				CODE N°
		TYPE	WIDTH	THICKNESS	REMARKS	
		Gravel			No Record of Constr.	
		Br. 537	20'		60' L.T.	
1920	75-6-20J & K	Grading	24'		Co. Job 903, 2005 & 2012	
		Gravel	24'	2 1/2"	1200 C.Y./Mile.	
		Br. 2237	18'		40' C.D.G.	
	(1)					
1931	75-6-20K	Tar Tr. Gravel	22'	1"	10000 Gal./Mile.	
					Maint. Dept.	
1931		Tar Tr. Gravel	23 1/2'		10000 Gal./Mile.	
					Maint. Dept.	
		Tar Tr. Gravel	20'		No Record of Constr.	
					Taken over from City in 1935.	
		Grading	40'			
		Gravel	32'	4"	2000 C.Y./Mile.	
		Br. 5255	30'		90' C.D.G.	
	(1)					
1934	75-6-51-4	Oil Tr. Gravel	20'			
					Maint. Dept.	
M					MC-3 5555 Gal./Mi.	
1940	A.F.E. 40	Bit. Retreat			Grav. 233 C.Y./Mi.	
					Maint. Dept.	
C						
1941	8710-02	Br. 5899	30'		40' C.D.G. Replaces Br. 2237	
C						
1941	8710-07	Ext. Mono. Culverts				
1941	8710-03	Grading	36'		Var. Width in Canby.	
		Gravel			830 C.Y./Mile.	
C						
1941	A.F.E. 56	Seeding			Seed supplied by R.S.D. (S.P. 8710-09)	
					Maint. Dept.	
C						
1942	8710-08	Stab. Grav. Base	32'	6 1/2"	Var. Width in Canby.	
M						
1945	A.F.E. 5	Bit. Seal Coat			RC 3 7692 Gal./Mi.	
					Grav. 215 C.Y./Mi.	
					Maint. Div.	
C						
1947	8710-10	Stab. Grav. Base	Var.	6 1/2"	Accum. Thickness	
		Plant Mix. Bit.	24'	1 1/2"	Width Var. 26'-52' in Canby	



YEARS FROM	TO	TOTAL MILES	UNINCORPORATED		INCORPORATED		RURAL		URBAN	
			RDWY. MI.	BR. MI.	RDWY. MI.	BR. MI.	RDWY. MI.	BR. MI.	RDWY. MI.	BR. MI.
1921	1932	5.44	5.03	0.01	0.39	0.01	5.03	0.01	0.39	0.01
1933	1940	5.44	5.03	0.01	0.38	0.02	5.03	0.01	0.38	0.02
1941		5.41	5.00	0.01	0.38	0.02	5.00	0.01	0.38	0.02

REMARKS: Layout is to scale as of 1935.

(1) This work not done under these project numbers but lies within the limits of these projects.

PREPARED BY
HIGHWAY PLANNING SURVEY
IN COOPERATION WITH
U.S. PUBLIC ROADS ADMINISTRATION

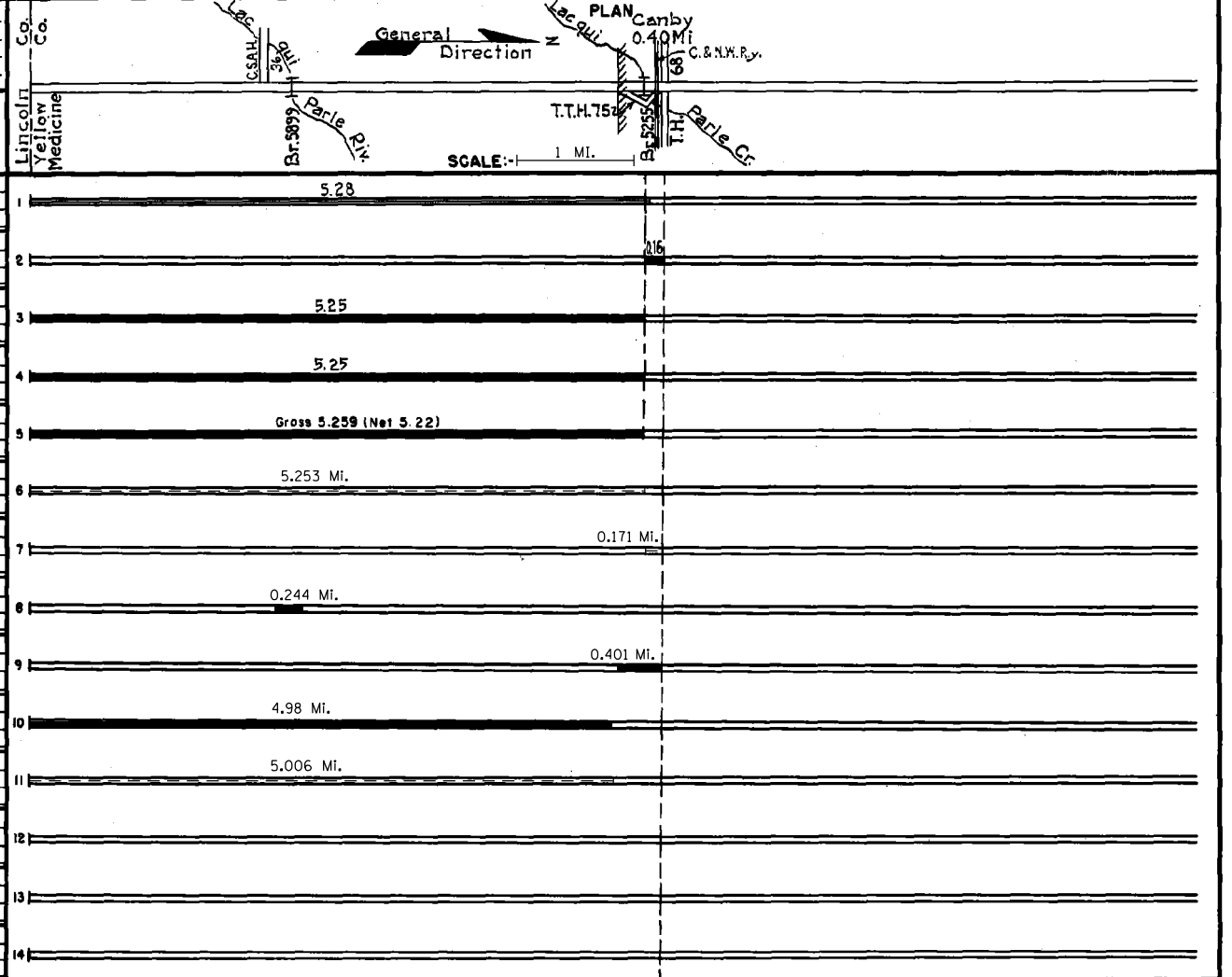
STATE OF MINNESOTA
DEPARTMENT OF HIGHWAYS
ROAD LIFE STUDIES
CONSTRUCTION PROJECT LOG RECORD

CONTROL SECTION 8710
TRUNK HIGHWAY 75
COUNTY Yellow Medicine
DISTRICT 85

LIMITS: S. Co. Line - Jct. T.H. 68 in Canby

Ref. Pt. 080+00.974 - 086+00.381

YEAR BUILT	PROJECT N°	DESCRIPTION			CODE N°
		TYPE	WIDTH	THICKNESS	
M 1948	A.F.E. 5	Bit. Seal Coat	24'		1
				RC-3, 12102 Gal. Agg. 409 C.Y.	
C 1951 (?)	8710-11	Concrete	30'	8"	2
C 1953	8710-12	Bit. Stab. Base Plant Mix Bit.	32' 24'	6" 2"	3
				added thickness	
C 1967	8710-16	Plant Mix Bit. Gravel Shoulders	24'	2"	4
				over surf. in place	
C 1983	8710-19, 21	Bit. Surfacing Turn Lanes	28' 12'	3" 20"	5
				Gross 5.259 (Net 5.22)	
M 1988	SF	Bit. Sealing			6
				5.253 Mi.	
D 1991	SF	Joint Repair			7
				0.171 Mi.	
C 1997	8710-26	Grading Agg. Base Bit. Surfacing	51' 28' 28'	3' 3' 3'	8
				Class 5, Class 3 Spec. 2331, 2341	
C 1997	8710-28	Grading Agg. Base Bit. Surfacing	56' 54' 48'	3' 3' 4'	9
				Class 5 Spec. 2331	
S 2005	8710-29	Bit. Overlay Culvert Repair	24'	1.5"	10
				Spec. 2360	
	2012	8828-143			11
		Agg. Seal Fog Seal			
				FA-2	
					12
					13
					14



YEARS		TOTAL MILES	UNINCORPORATED		INCORPORATED		RURAL		URBAN	
FROM	TO		RDWY. MI.	BR. MI.	RDWY. MI.	BR. MI.	RDWY. MI.	BR. MI.	RDWY. MI.	BR. MI.

REMARKS: See Sheet N° 1
(2) Contract not final but work substantially complete.