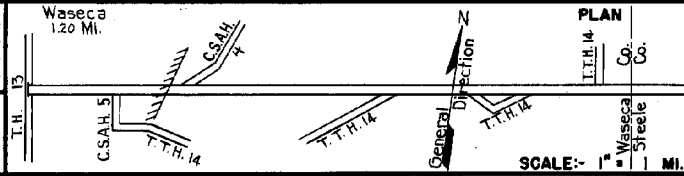


PREPARED BY  
HIGHWAY PLANNING SURVEY  
IN COOPERATION WITH  
U.S. PUBLIC ROADS ADMINISTRATION

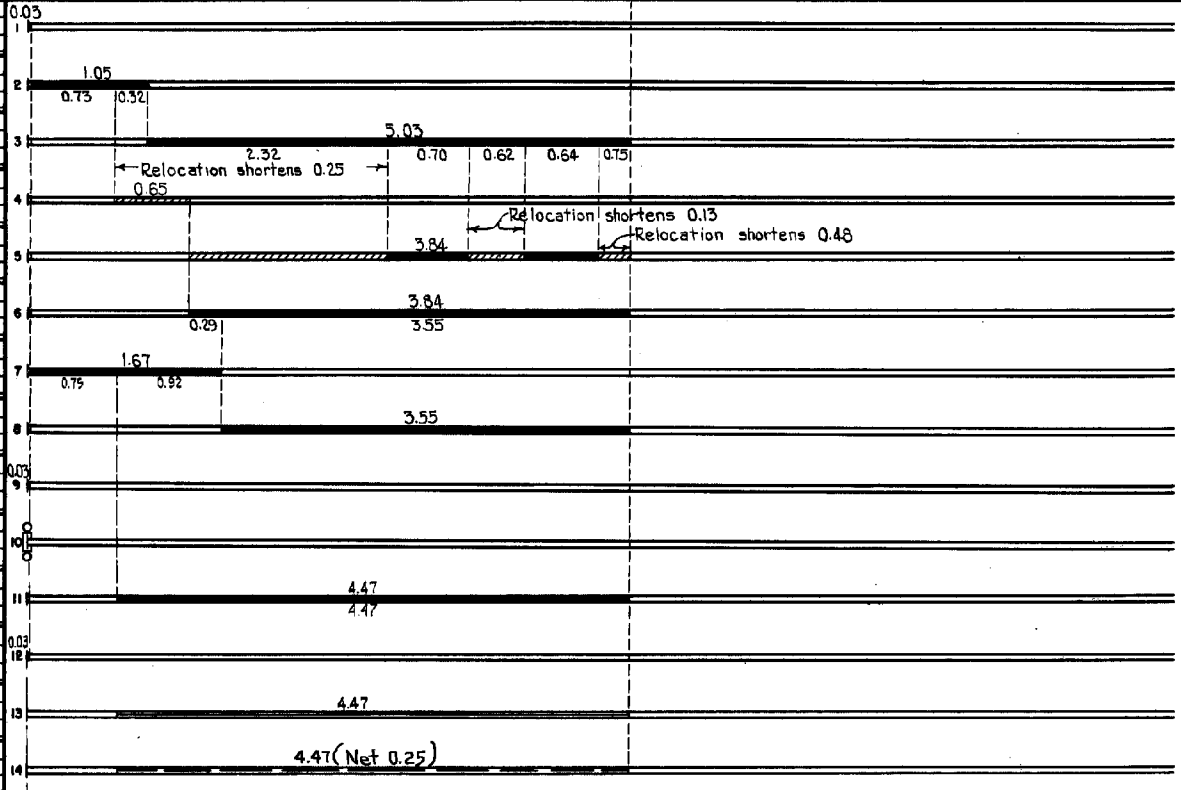
STATE OF MINNESOTA  
DEPARTMENT OF HIGHWAYS  
ROAD LIFE STUDIES  
CONSTRUCTION PROJECT LOG RECORD

CONTROL SECTION B104  
TRUNK HIGHWAY 14  
COUNTY Waseca  
DISTRICT (6)(A)

LIMITS: Jct. T.H. 13 in Waseca - E. Co. Line.



YEAR BUILT	PROJECT NO	DESCRIPTION			CODE NO
		TYPE	WIDTH	THICKNESS	
		Brick	14'	2 1/2"	No Record of Constr Concrete Base.
		Gravel			No Record of Constr
1919	14-7-7	Gravel	24'	2 1/2"	1200 C.Y./Mile.
		Gravel	22'	2"	No Record of Constr Taken over from City & County in 1925
1925	14-7-37A&B	Grading	30'		
1926	14-7-37A&B	Gravel	24'	3 1/2"	1600 C.Y./Mile.
1928	14-7-37A&B	Concrete	24'	9-7-9	Part widened by City.
1930	14-7-37C	Concrete	20'	9-7-9	
1935	14-7-48	Concrete	20'		20' Center paved. 14' Rt. & Lt. old Brick left in place.
C	8104-01	Traffic Signale			
C	8104-03	Base (2) Plant Mix Bit.	24'	3-4"	
C	8104-05	Plant Mix Bit.	47'	3"	On coner. & brick imp.
M	1956 A.F.E. 605	Bit Seal Coat	22'		RAC&RC-5, 14030 Gal. Agg. 590 C.Y.
M	1963 SF	Spot Treat Bit. Surf. Repair	24'		Plant Mix 164 tons MC-3 tack 100 Gal.



YEARS FROM	TO	TOTAL MILES	UNINCORPORATED		INCORPORATED		RURAL		URBAN	
			RDWY. MI.	BR. MI.	RDWY. MI.	BR. MI.	RDWY. MI.	BR. MI.	RDWY. MI.	BR. MI.
1921	1924	6.11	5.07	0.00	1.08	0.00	5.03	0.00	1.08	0.00
1925	1970	5.25	4.21	0.00	1.04	0.00	4.21	0.00	1.04	0.00
1971		5.25	4.05	0.00	1.20	0.00	4.05	0.00	1.20	0.00

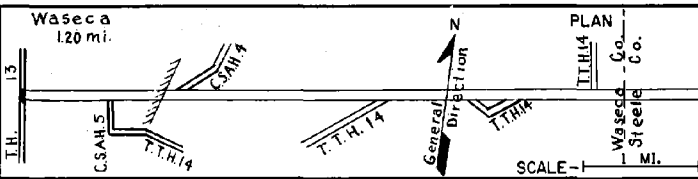
REMARKS: Layout is to scale as of 1925.  
(1) Contract not final but work substantially complete. (2) 20' Concr. imp. widened to 44' with 6" Conc. from Mi. Pt. 0.78-0.93 & to 23' with 6' Bit. Base on balance.

PREPARED BY  
TRAFFIC AND PLANNING DIVISION  
IN COOPERATION WITH  
U.S. DEPARTMENT OF COMMERCE  
BUREAU OF PUBLIC ROADS

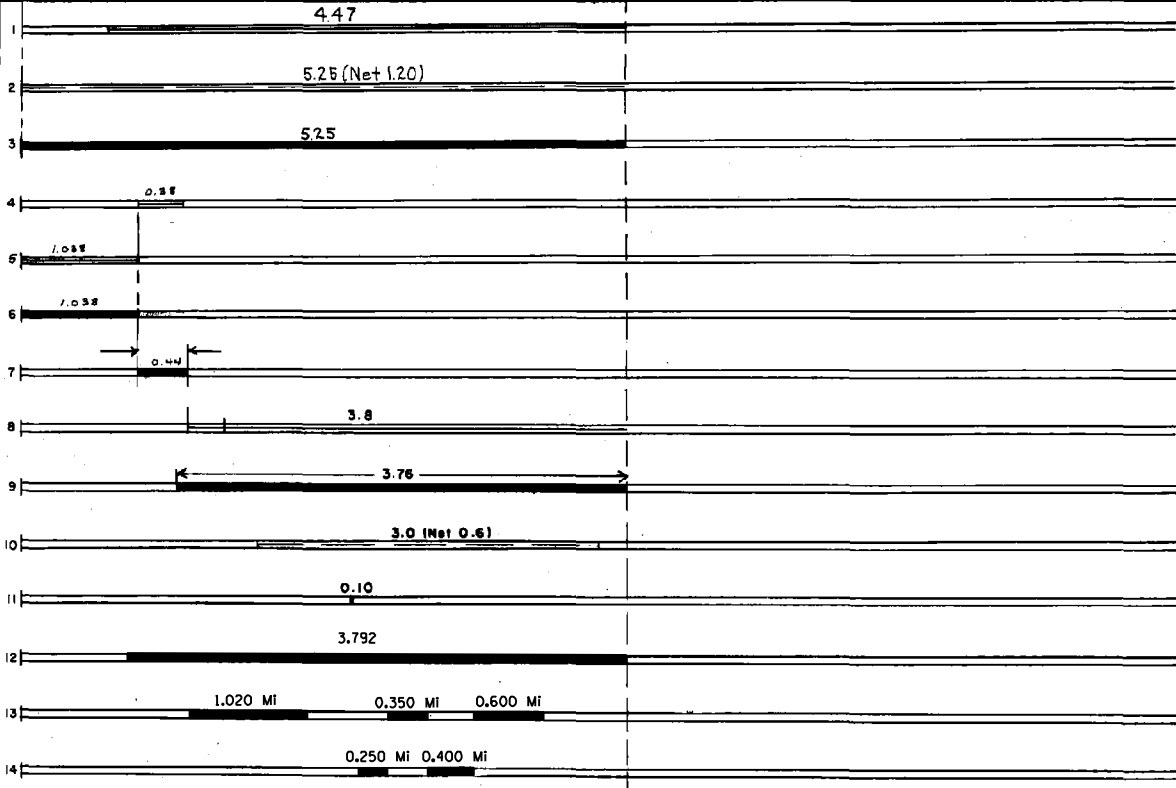
STATE OF MINNESOTA  
DEPARTMENT OF HIGHWAYS  
ROAD LIFE STUDIES  
CONSTRUCTION PROJECT LOG RECORD

CONTROL SECTION B104  
TRUNK HIGHWAY 14  
COUNTY Waseca  
DISTRICT 7A16

LIMITS: Jct. T.H. 13 in Waseca - E. Co. Line  
Ref. Pt. 159+00.285 - 163+00.094



YEAR BUILT	PROJECT NO.	DESCRIPTION				REMARKS
		TYPE	WIDTH	THICKNESS		
M 1964	C	Light Bit. Seal	23'		RS-2, 7117 Gals. Agg. 263 C.Y.	
M 1967	SF	Bit. Surf. Repair	24'	3/4"	MC-250 Tack 700 Gal. Pl. Mix Bit. Surf. 707 Ton	
C 1969	8104-08	Pl. Mix. Bit. Surf. Gravel Shoulders	24' 16'	2 1/4" 2 1/4"	over old 20' Conc. in place 8 min. Rt. & Lt.	
M 1978	SF	Asph. Conc. Overlay	24'	3/4"		
M 1978	SF	Asph. Conc. Overlay	36'	3/4"		
C 1976	8104-14	Bit. Surfacing & Turn Lanes	Var.	2 1/2"		
C 1976	8104-15	Bit. Surfacing & Turn Lanes	20'	2 1/2"		
M 1960	SF	Creek Filling	24'		AC-3 Creek Filler	
C 1980	8104-16	Misc. Grading Bit. Surfacing Bit. Shoulders	24' 8'	3/4" 1 3/4"	Over Imp. Concrete	
M 1980	SF	Backslope	Var.	Var.	Backslope Snow Areas 3,400 Ft.	
M 1984	SF	Spot Bit. Overlay	40'	1"	Sp. 2341 49 Tons	
C 1988	8104-22	Bit. Overlay	26'	1 1/2"	Spec. 2341	
M 1995	8404-95197	Milling Bit. Overlay	24' 24'	1 1/2" 1 1/2"	Spec. 2341	
M 1996	8104-96221	Milling Bit. Overlay	24' 24'	1 1/2" 1 1/2"	Spec. 2341	



YEARS		TOTAL MILES	UNINCORPORATED		INCORPORATED		RURAL		URBAN	
FROM	TO		RDWY. MI.	BR. MI.	RDWY. MI.	BR. MI.	RDWY. MI.	BR. MI.	RDWY. MI.	BR. MI.

REMARKS: See Sheet No. 1

