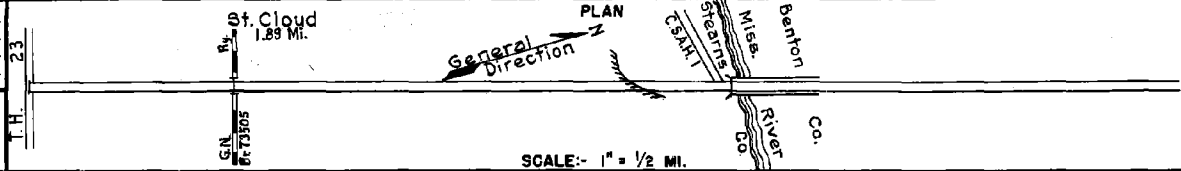


PREPARED BY
HIGHWAY PLANNING SURVEY
IN COOPERATION WITH
U. S. PUBLIC ROADS ADMINISTRATION

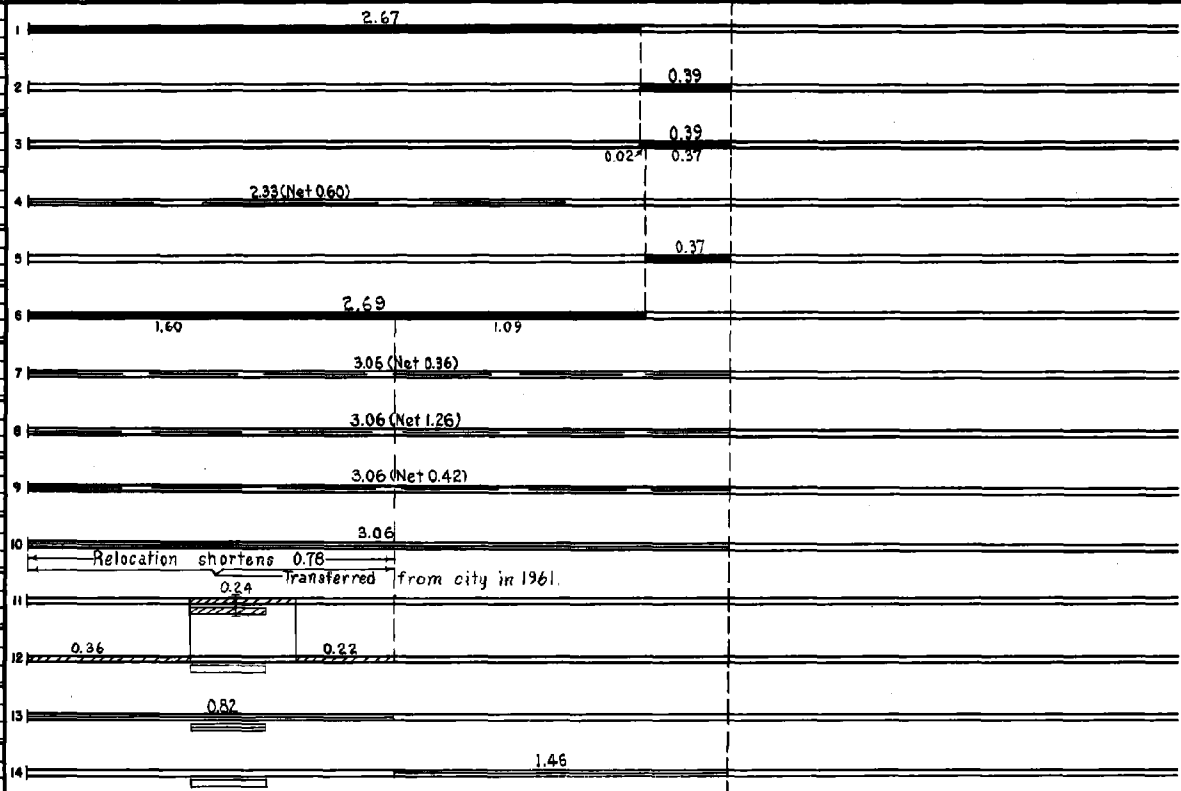
STATE OF MINNESOTA
DEPARTMENT OF HIGHWAYS
ROAD LIFE STUDIES
CONSTRUCTION PROJECT LOG RECORD

CONTROL SECTION 7321
TRUNK HIGHWAY 152
COUNTY Stearns
DISTRICT 35

LIMITS: Jct. T.H. 23 in St. Cloud - W. end of Miss. River Br. (E. Co. Line)



YEAR BUILT	PROJECT N ^o	DESCRIPTION			CODE N ^o
		TYPE	WIDTH	THICKNESS	
		Mixed Bit.	20'		
1949	73-503-03	Grading Stab Gravel	36' 28'	2"	1200 C.Y./mi.
		Mixed Bit.	30'		No Record of Const. Added in 1949
M	A.F.E. 4	Spot Treat. Bit. Surf. Repair	24'		RT-4, 8115 Gal. Agg. 412 C.Y.
C	1952 (1)	Plant Mix Bit.	24'	1 1/2" Added	
C	A.F.E. 21	Bit Resurfacing Mixed Bit.	24'	1" Added	MG-3, 23792 Gal. Agg. 1484 C.Y.
M	A.F.E. 604	Spot Treat. Bit. Surf. Repair	24'		Bit. 2254 Gal. Agg. 246 Tons
M	A.F.E. 604	Spot Treat. Bit. Surf. Repair	24'		SC-4, 9720 Gal. Agg. 862 Tons
M	A.F.E. 604	Spot Treat. Bit. Surf. Repair	24'		SC-4, 2915 Gal. Agg. 308 Tons
M	A.F.E. 605	Light Bit. Seal Coat	25'		RC-2, 5248 Gal. Agg. 200 C.Y.
1961		Plant Mix Bit Base Plant Mix Bit Br. 73305	36' 36'	1/2" 3"	on 8 1/2 Gray Base 0.17 Mi. Divided G.N. Ry. U.P.
		Mixed Bit.	48'		No Record of Const.
M	1962	Light Bit. Seal			RS-2, 3242 Gal. Agg. 125 C.Y.
M	1963	Light Bit. Seal	25'		RS-2K, 1897 Gal. Agg. 115 C.Y.



YEARS FROM TO	TOTAL MILES	UNINCORPORATED		INCORPORATED		RURAL		URBAN	
		RDWY. MI.	BR. MI.	RDWY. MI.	BR. MI.	RDWY. MI.	BR. MI.	RDWY. MI.	BR. MI.
1949 1960	3.06	0.39	0.00	2.67	0.00	0.39	0.00	2.67	0.00
1961	2.28	0.39	0.00	1.89	0.00	0.39	0.00	1.89	0.00

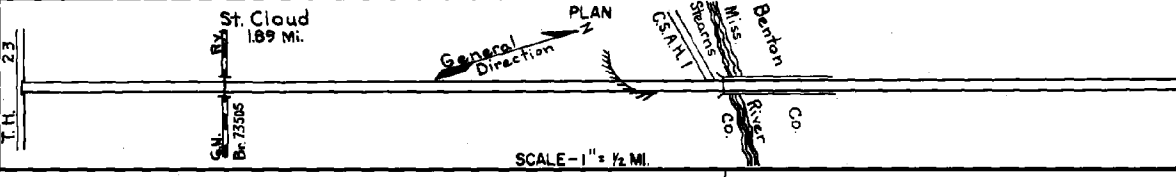
REMARKS: Layout is to scale as of 1949
(1) Contract not final but work substantially complete.

PREPARED BY
 TRANSPORTATION & TRANSIT PLANNING & PROGRAMMING DIVISION
 IN COOPERATION WITH
 U.S. DEPARTMENT OF TRANSPORTATION-BUREAU OF PUBLIC ROADS

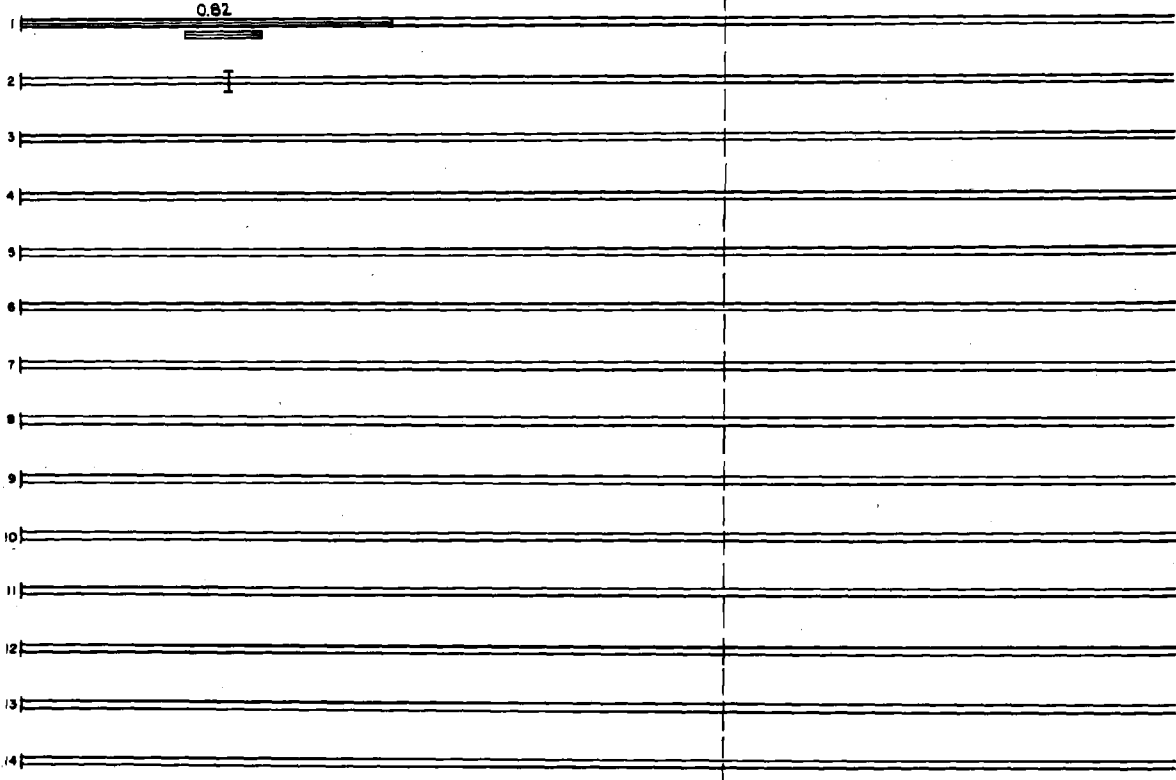
STATE OF MINNESOTA
 DEPARTMENT OF HIGHWAYS
 ROAD LIFE STUDIES
 CONSTRUCTION PROJECT LOG RECORD

CONTROL SECTION 7321
 TRUNK HIGHWAY 152
 COUNTY Stearns
 DISTRICT 3E

LIMITS: Jct. T.H. 23 in St. Cloud - W. end of Mississippi River Bridge (E. Co. line)



YEAR BUILT	PROJECT NO.	DESCRIPTION			REMARKS
		TYPE	WIDTH	THICKNESS	
C 1969	7321-17	P. Mix Bit. Surf.	48'-60"	1/2"	
M 1980	SF	Bridge Pointing			Br. No. 73504



YEARS		TOTAL MILES	UNINCORPORATED		INCORPORATED		RURAL		URBAN	
FROM	TO		RDWY. MI.	BR. MI.	RDWY. MI.	BR. MI.	RDWY. MI.	BR. MI.	RDWY. MI.	BR. MI.

REMARKS: See Sheet No. 1

