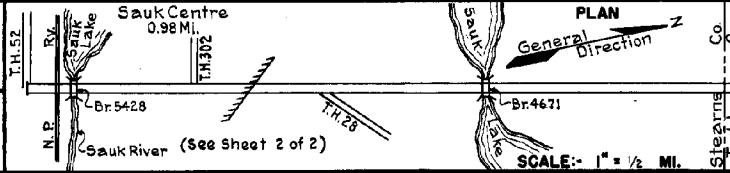


PREPARED BY
HIGHWAY PLANNING SURVEY
IN COOPERATION WITH
U.S. PUBLIC ROADS ADMINISTRATION

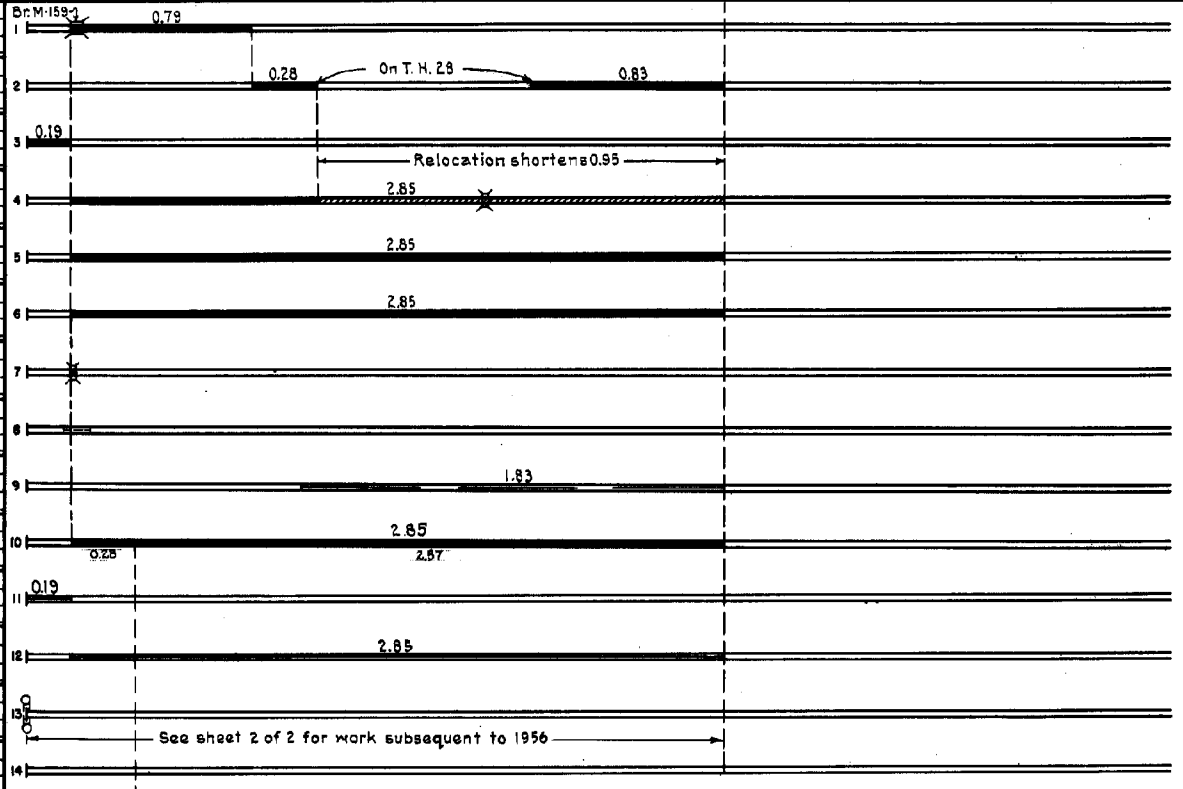
STATE OF MINNESOTA
DEPARTMENT OF HIGHWAYS
ROAD LIFE STUDIES
CONSTRUCTION PROJECT LOG RECORD

CONTROL SECTION 7319
TRUNK HIGHWAY 71
COUNTY Stearns
DISTRICT 3A-3B

LIMITS: N. Jct. T.H. 52 in Sauk Centre - N. Co. Line
(See Sheet 2 of 2)



YEAR BUILT	PROJECT N ^o	DESCRIPTION			CODE N ^o
		TYPE	WIDTH	THICKNESS	
		Gravel			No Record of Constr.
		Br. M-159	18'		260' L.T. & H.T.
1919	71-28-1	Grading Gravel	60'	2"	Co. Job 1908. 800 C.Y./Mile.
1924	71-28-9	Bit. Concrete Concrete Base	40' 40'	2" 6"	Warrenite Bitulithic.
1928	71-4-31-A	Grading Gravel	32' 24'	1 3/4"	800 C.Y./Mile. 114' B.S.
	(1)				
1928	71-4-31A	Oil Tr. Gravel	24'	1 1/2"	2475 Gal./Mile. Maint. Dept.
				(2)	
1932	71-4-31A	Bit. Plant Mix.	24'	3"	1500 Tons/Mile.
1936	71-4-31A	Br. 5428	40'		164' C.D.G.
1937	71-4-31A	Roadside Develop.			
M	1944 A.F.E. 4	Spot Treat. Bit. Surf. Repair	24'		MG-2 & RG-6 1733G./Mi. Agg. 92 C.Y./Mi. Maint. Div.
C	1947 A.F.E. 19 A.F.E. 22	Bit. Resurfacing Mixed Bit. & Spot Grade Lifts	24 1/2'	1" Added	5C-4, 26315 Gal. Agg. 2122 Tons
M	1948 A.F.E. 5	Bit. Seal Coat			Sealed by City under Spec. Agree M-358-P
M	1951 A.F.E. 4	Bit. Fog Seal	24 1/2'		RCS-1, 4580 Gal. Agg. 125 C.Y.
C	1953 7319-04	Traffic Signals			



YEARS		TOTAL MILES	UNINCORPORATED		INCORPORATED		RURAL		URBAN	
FROM	TO		RDWY. MI.	BR. MI.	RDWY. MI.	BR. MI.	RDWY. MI.	BR. MI.	RDWY. MI.	BR. MI.
1924	1927	2.09	1.11	0.00	0.93	0.05	1.11	0.00	0.93	0.05
1928	1935	3.04	2.04	0.02	0.93	0.05	2.04	0.02	0.93	0.05
1936	1955	3.04	2.04	0.02	0.96	0.02	2.04	0.02	0.96	0.02
See Sheet No. 2										

REMARKS: Layout to scale as of 1928

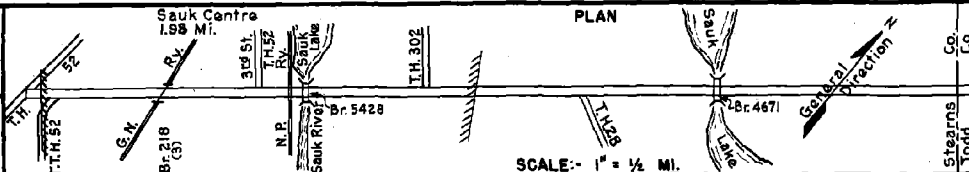
(1) This work not done under this project number but lies within the limits of this project. (2) Accumulated thickness.

PREPARED BY
HIGHWAY PLANNING SURVEY
IN COOPERATION WITH
U. S. PUBLIC ROADS ADMINISTRATION

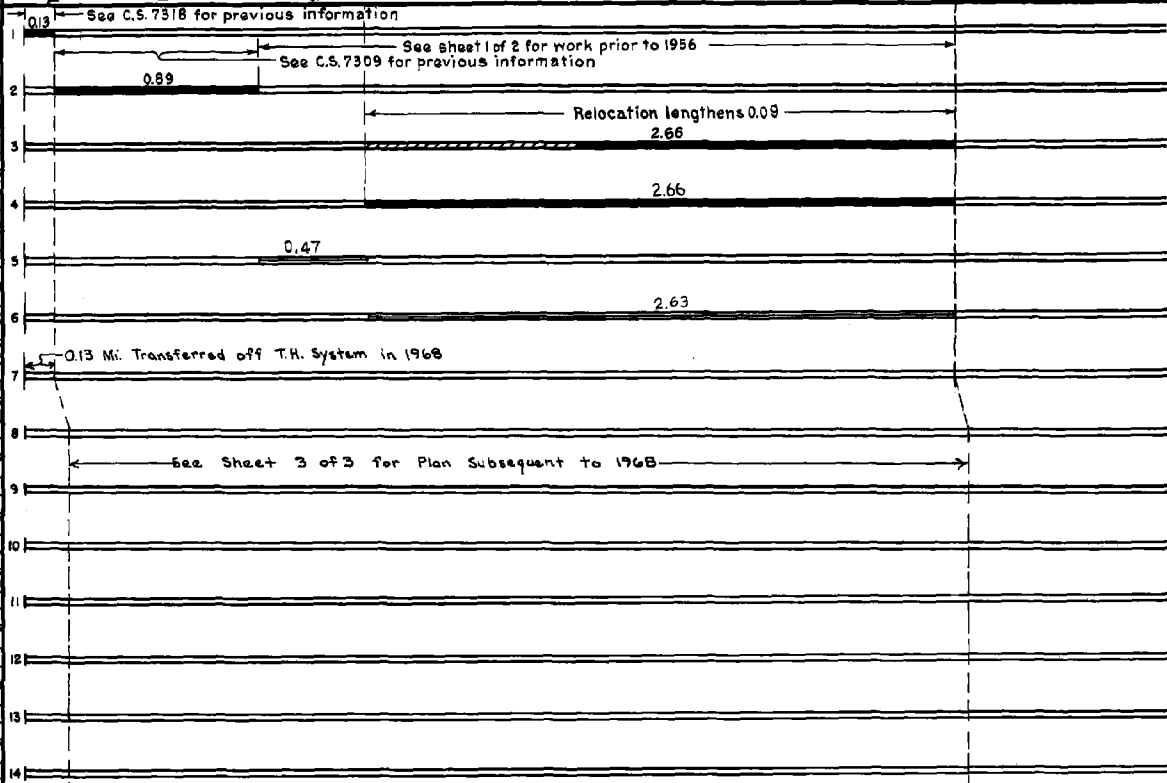
STATE OF MINNESOTA
DEPARTMENT OF HIGHWAYS
ROAD LIFE STUDIES
CONSTRUCTION PROJECT LOG RECORD

CONTROL SECTION 7319
TRUNK HIGHWAY 71
COUNTY Stearns
DISTRICT 3A-3B

LIMITS: Jct. T.H. 52 - N. Co. Line



YEAR BUILT	PROJECT NO.	DESCRIPTION		CODE NO.
		TYPE	WIDTH THICKNESS	
C 1953	7318-17	Gravel Base Mixed Bit.	32' 6"-15' 26' 1"	Transferred from C.S. 7318 (T.H. 71) in 1956
C 1956	7319-06	Base (4) Plant Mix Bit.	5064' 2'-4"	
C 1957	7319-08	Grading Gravel Base Mixed Bit. (Base)	2448' 2448' 5" 2648' 1 1/2"	on 0'-15" Stab. Sand-Grav. Sub-base
C 1962	7319-11	Plant Mix Bit.	2448' 3'	
M 1963		Bit. Surf. Repair	448'	Bit. Mix. 868 Tons MC-2, Tack 516 Gal.
M 1967	C	Bit. Seal Coat	25'	CRS-2 Bit. 8,590 Gal. FA-3 Agg. 321 C.Y.



YEARS		TOTAL MILES	UNINCORPORATED		INCORPORATED		RURAL		URBAN	
FROM	TO		RDWY. MI.	BR. MI.	RDWY. MI.	BR. MI.	RDWY. MI.	BR. MI.	RDWY. MI.	BR. MI.
1956	1956	4.06	2.10	0.02	1.91	0.03	2.10	0.02	1.91	0.03
1957	1967	4.15	2.15	0.02	1.95	0.03	2.15	0.02	1.95	0.03

REMARKS: Layout is to scale as of 1956 (3) Br 218 (B.S.-U.P) built in 1920, center pier removed (27' rdwy) in 1931 under E.P. 52:2-45-1A (4) 18' conc. imp. from Mi. Pt. 0.13-0.60 widened 16' Rt. & Lt. with 10' bit. stab. base, balance of base is old concr.

