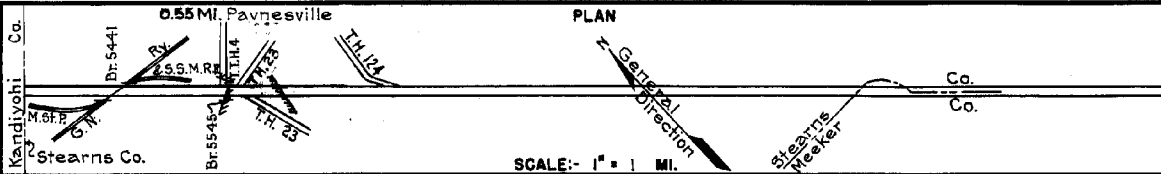


PREPARED BY  
HIGHWAY PLANNING SURVEY  
IN COOPERATION WITH  
U. S. PUBLIC ROADS ADMINISTRATION

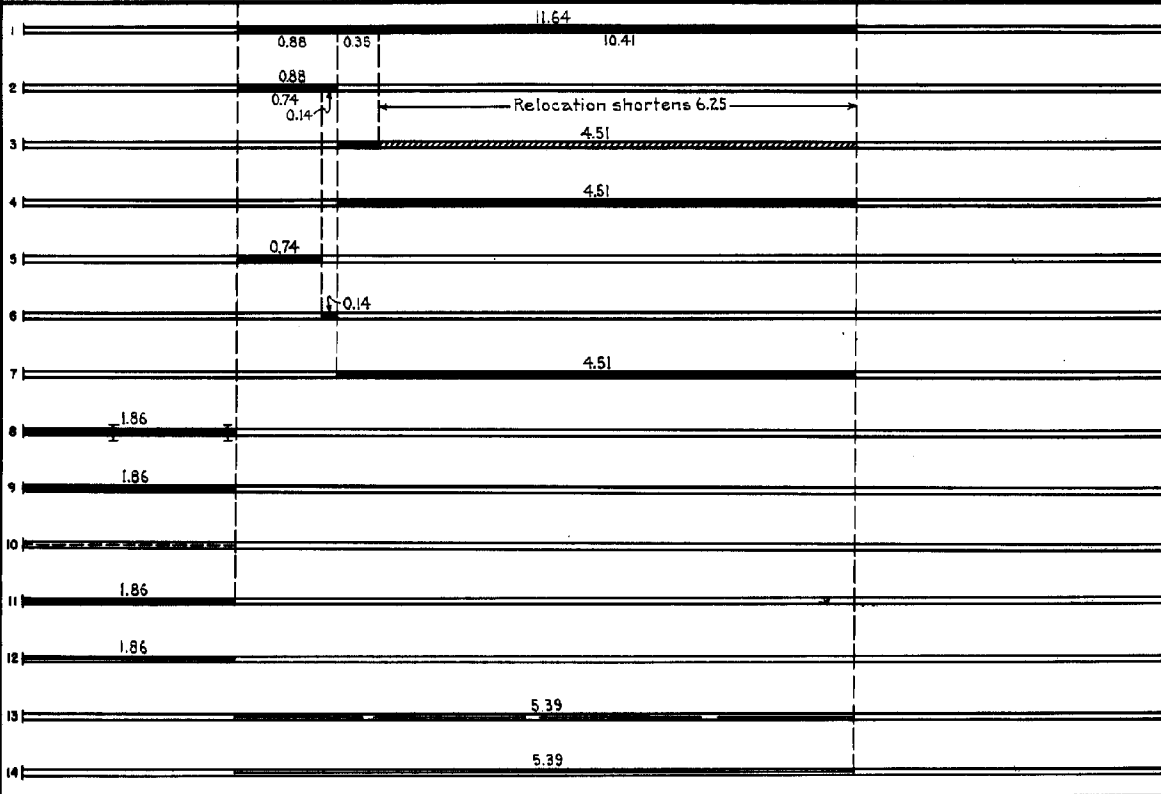
STATE OF MINNESOTA  
DEPARTMENT OF HIGHWAYS  
ROAD LIFE STUDIES  
CONSTRUCTION PROJECT LOG RECORD

CONTROL SECTION 7314  
TRUNK HIGHWAY 55  
COUNTY Stearns  
DISTRICT 3B

LIMITS: W. Co. Line - S. Co. Line



YEAR BUILT	PROJECT N#	DESCRIPTION				CODE N#
		TYPE	WIDTH	THICKNESS	REMARKS	
		Earth	24'		No Record of Constr.	
1926		Gravel			1100 C.Y./Mile. Maint. Dept.	
1927	55-22-25A	Grading	32'			
1928	55-22-25A	Gravel	24'	3/4"	1500 C.Y./Mile.	
1931		(1) Oil Tr. Gravel	25'		No Record of Constr.	
1931		Tar Tr. Gravel	25'	1"	4556 Gal./Mile. Maint. Dept.	
1931	55-22-25A	(2) Tar Tr. Gravel	25'	1"	4556 Gal./Mile. Maint. Dept.	
1936	55-142-24-1B,C,D	Grading	32'			
		Br. 5441	30'		192 C.D.G.-O.H.	
		Br. 5545	30'		110 C.D.G.	
1937	55-142-24-1B,C,D	Gravel	30'	1"		
1937	55-142-24-1B,C,D	Seeding				
1938	55-142-24-1B,C,D	Mixed Bitum.	24'	1 1/4"		
M	1940 A.F.E. 13	Bit. Seal Coat			Tar 4185 Gal./Mi. Grav. 109 C.Y./Mi. Maint. Dept.	
M	1941 A.F.E. 14	Bit. Seal Coat (Spots)	26'		RT-3 334 Gal./Mi. Agg. 53 C.Y./Mi. Maint. Dept.	
M	1942 A.F.E. 5	Bit. Seal Coat			AE-1 4143 Gal./Mi. Grav. 150 C.Y./Mi. Maint. Dept.	



YEARS FROM	TOTAL TO	UNINCORPORATED		INCORPORATED		RURAL		URBAN	
		ROWY. MI.	BR. MI.	ROWY. MI.	BR. MI.	ROWY. MI.	BR. MI.	ROWY. MI.	BR. MI.
1921	1926	11.64	3.91	0.00	1.23	0.00	10.41	0.00	1.23
1927	1932	5.39	4.14	0.00	1.23	0.00	4.14	0.00	1.23
1933	1952	7.25	5.89	0.04	3.0	0.02	5.89	0.04	1.30
1953	1957	6.70	6.38	0.04	0.26	0.02	6.38	0.04	0.26
1958	1962	6.70	6.26	0.04	0.38	0.02	6.26	0.04	0.38
1963	1963	6.70	6.34	0.04	0.30	0.02	6.34	0.04	0.30
1964	1973	6.70	6.24	0.04	0.40	0.02	6.24	0.04	0.40

REMARKS: Layout is to scale as of 1936

(1) Status map indicates Tarrred Gravel in 1931. (2) This work not done under this project number but lies within the limits of this project.

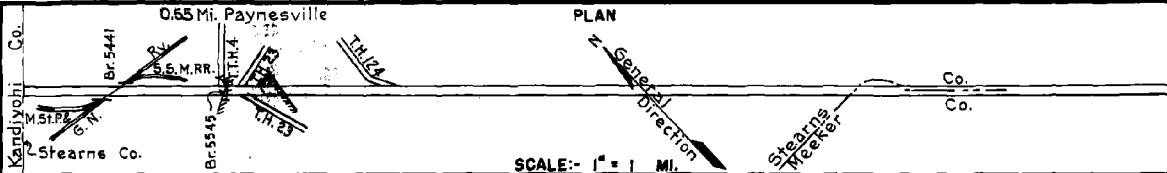
4-16

PREPARED BY  
HIGHWAY PLANNING SURVEY  
IN COOPERATION WITH  
U. S. PUBLIC ROADS ADMINISTRATION

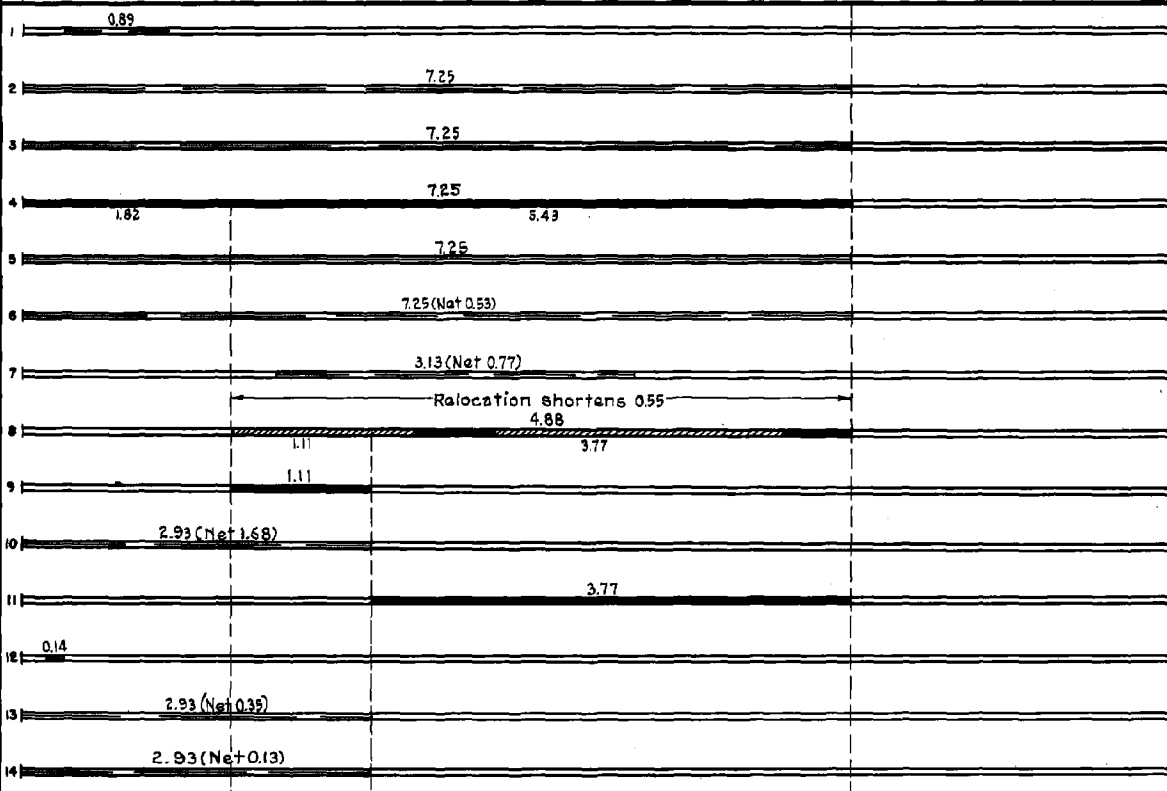
STATE OF MINNESOTA  
DEPARTMENT OF HIGHWAYS  
ROAD LIFE STUDIES  
CONSTRUCTION PROJECT LOG RECORD

CONTROL SECTION 7314  
TRUNK HIGHWAY 55  
COUNTY Stearns  
DISTRICT 3B

LIMITS: W. Co. Line - S. Co. Line



YEAR BUILT	PROJECT N°	DESCRIPTION			CODE N°
		TYPE	WIDTH	THICKNESS	
M 1944	7314-06	Base Repair (Spots) Mixed Bit. (Spots)	26'	1"	
M 1944	A.F.E. 4	Spot Treat. Bit. Surf. Repair	24'		RT-6, 5378 Gal./Mi. Grav. 216 C.Y./Mi. Maint. Div.
M 1945	A.F.E. 4	Spot Treat. Bit. Surf. Repair	26'		RT-6, 326 Gal./Mi. Grav. 12 C.Y./Mi. Maint. Div.
C 1947	A.F.E. 20	Bit. Resurfacing Mixed Bit.	24'	1" Added	MC-3, 60454 Gal. Agg. 5005 tons
M 1949	A.F.E. 5	Bit. Seal Coat	24'		RC-3, 15568 Gal. Agg. 604 C.Y.
M 1952	A.F.E. 4	Spot Treat. Bit. Surf. Repair	24'		SC-3, 4180 Gal. Agg. 268 C.Y.
M 1953	A.F.E. 604	Spot Treat. Bit. Surf. Repair	24'		MC-1&SC-3, 6893 Gal. Agg. 543 Tons
C 1953	7314-09	Grading Gravel	43' 28'	1/4"	16 Sand or Sand-Grav. 700 C.Y./Mi.
C 1953	A.F.E. 841	Bit. Surfacing Mixed Bit.	24'	1/2"	SC-2 & MC-2, 10991 Gal.
M 1954	A.F.E. 604 A.F.E. 836	Spot Treat. Bit. Surf. Repair Entrance Culvert	24'		SC-4, 13002 Gal. Agg. 1176 Tons
C 1954	7314-10 A.F.E. 843	Concrete Guard Rail	22'	9.79	Guide Posts
M 1955	A.F.E. 604	Bit. Surf. Repair	24'		MC-3, 1118 Gal. Agg. 101 Tons
M 1957	A.F.E. 604	Spot Treat. Bit. Surf. Repair	24'		MC-3, 3971 Gal. Agg. 245 Tons
M 1958	A.F.E. 604	Spot Treat. Bit. Surf. Repair	24'		SC-4, 1987 Gal. Agg. 77 Tons



YEARS FROM	TOTAL MILES TO	UNINCORPORATED		INCORPORATED		RURAL		URBAN	
		RDWY. MI.	BR. MI.	RDWY. MI.	BR. MI.	RDWY. MI.	BR. MI.	RDWY. MI.	BR. MI.
1944	6.70	6.11	0.04	0.55	0.00	6.11	0.04	0.55	0.00

REMARKS: See Sheet No 1

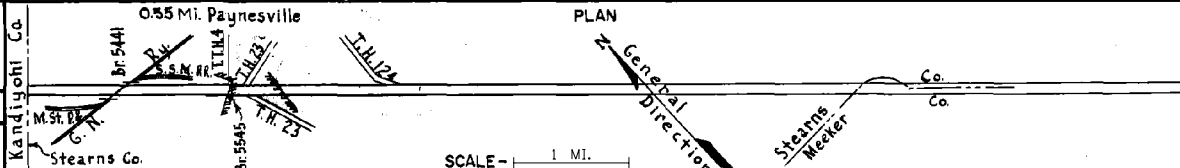
PREPARED BY  
TRAFFIC AND PLANNING DIVISION  
IN COOPERATION WITH  
U.S. DEPARTMENT OF COMMERCE  
BUREAU OF PUBLIC ROADS

STATE OF MINNESOTA  
DEPARTMENT OF HIGHWAYS  
ROAD LIFE STUDIES  
CONSTRUCTION PROJECT LOG RECORD

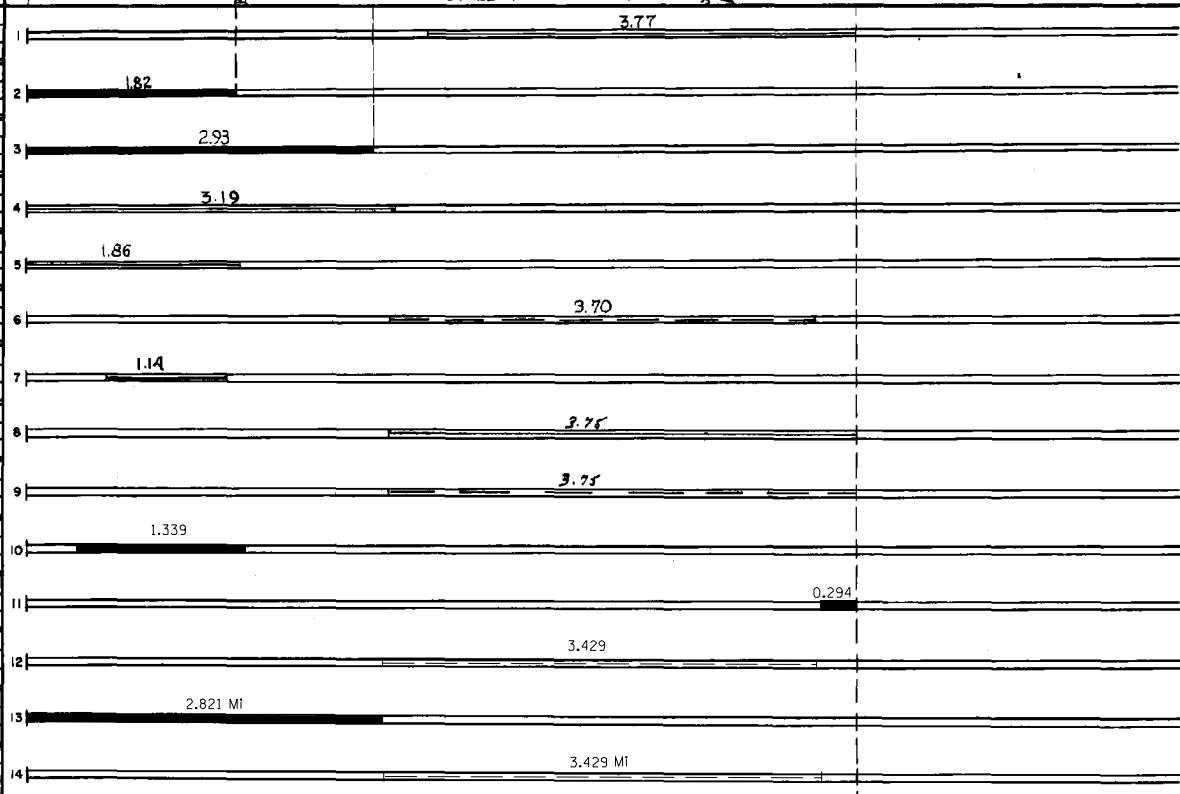
CONTROL SECTION 7314  
TRUNK HIGHWAY 55  
COUNTY Stearns  
DISTRICT 3B

LIMITS: W. Co. Line - S. Co. Line

Ref. Pt. 106+00.831 - 113+00.417



YEAR BUILT	PROJECT NO	DESCRIPTION			
		TYPE	WIDTH	THICKNESS	REMARKS
M 1959	A.F.F. 819	Prime & Bit Seal on Shoulders			MC-1 & RC-2, 14405 Gal. Agg. 285 Tons
C 1960	7314-13	Grading Gravel Base Road Mix Bit	26'	1 1/2"	
C 1962	7314-14	Bit Base Plant Mix Bit. Bit Shoulders	26' 24'	1 1/2" 3'-3 1/2"	M.I.P. 1.82 to 2.93 only 8' right & left
M 1965	C	Light Bit. Seal	24'		RS-1C 6852 Gal. FA-1 Seal Coat Agg. 233 C.Y.
M 1972	7314-16	Pl. Mix Bit Overlay	24'	5/8"	
M 1972	SF	Joint Seal			6300 lbs.
C 1973	7314-19	Bit. Seal Coat		5/8"	
M 1970	SF	Bituminous slides	2'	1 1/4"	
M 1981	7314	Placing Concrete & Joint Sealing			
C 1988	7314-22	Bit. Overlay	24'	1 1/2" 1"	Spec. 2331 Spec. 2341
C 1989	7314-24	Grading Bit. Surfacing	24'	1 1/2" 1"	Spec. 2331 Spec. 2341
M 1991	M4453	Conc. Repair			
C 1997	7314-29	Milling Bit. Overlay	24' 24'	2" 1 1/2"	
C 2001	7314-30	Concrete Repair			



YEARS		TOTAL MILES	UNINCORPORATED		INCORPORATED		RURAL		URBAN	
FROM	TO		RDWY. MI.	BR. MI.	RDWY. MI.	BR. MI.	RDWY. MI.	BR. MI.	RDWY. MI.	BR. MI.

REMARKS: See Sheet No 1

