

PREPARED BY
HIGHWAY PLANNING SURVEY
IN COOPERATION WITH
U.S. PUBLIC ROADS ADMINISTRATION

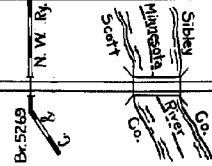
STATE OF MINNESOTA
DEPARTMENT OF HIGHWAYS
ROAD LIFE STUDIES
CONSTRUCTION PROJECT LOG RECORD

CONTROL SECTION 7003
TRUNK HIGHWAY 25
COUNTY Scott
DISTRICT 7A

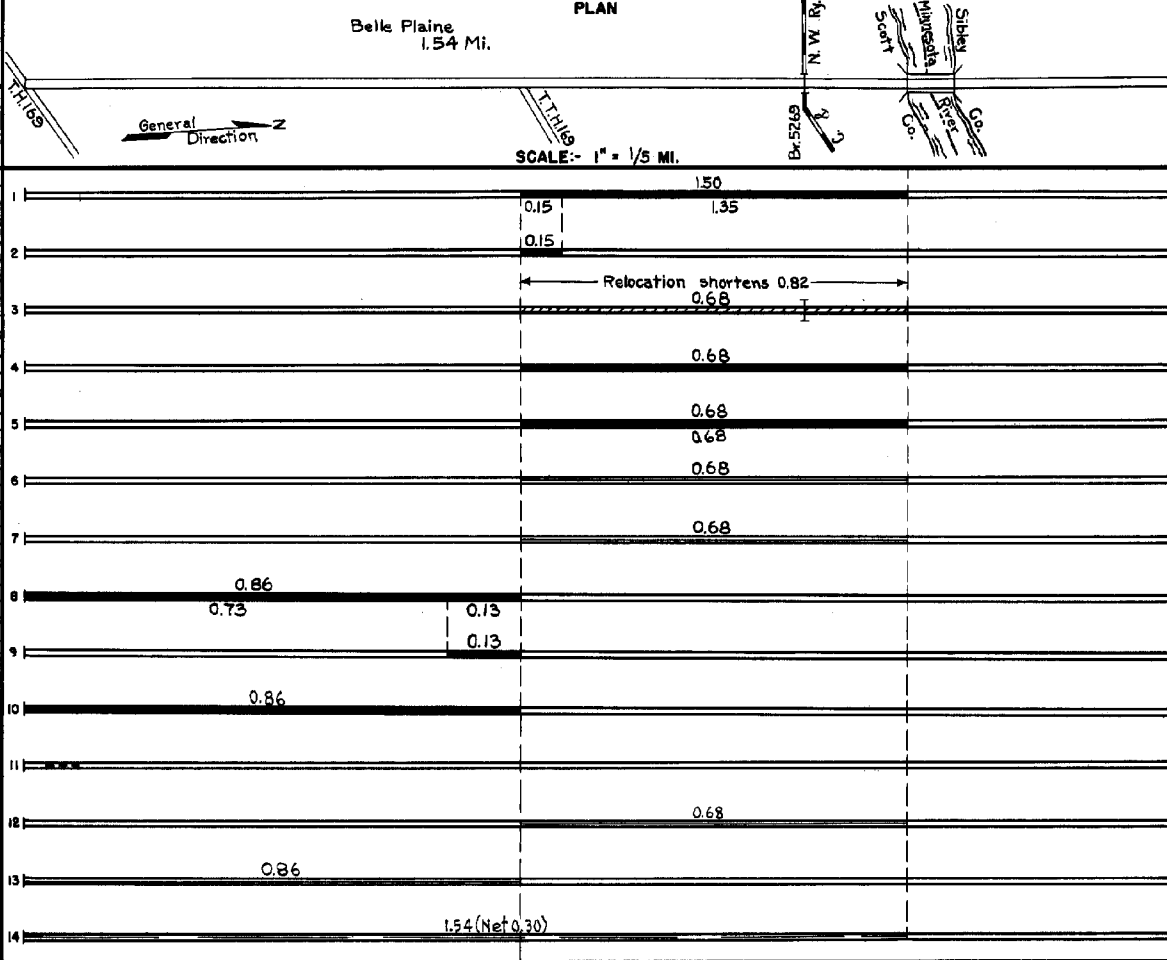
LIMITS: In Belle Plaine
Jct. T.H. 169 - S. End of Bridge (Minn. River)

Belle Plaine
1.54 Mi.

PLAN



YEAR BUILT	PROJECT N ^o	DESCRIPTION			CODE N ^o
		TYPE	WIDTH	THICKNESS	
		Gravel			No Record of Const.
1926	25-25-24	Concrete	18'		
1935	25-25-29-1A	Grading Gravel Br. 5269	40' 26' 27'	3'	1500 C.Y./MI. DPG. 4 Tower Spans 0.4
1937	A.F.E. 37	Mixed Bit.	26'	1 1/2"	Maint. Dept.
1946	A.F.E. 19	Bit Resurfacing Mixed Bit. & Fog Seal	24'	1" added	MC-143, 8279 Gal. Agg. 115 C.Y.
1947	A.F.E. 5	Bit Seal Coat			RC-3, 2207 Gal. Agg. 95 C.Y.
1952	A.F.E. 5	Light Bit Seal			MC-0, 1119 Gal. RC-2, 1850 Gal. Agg. 66 C.Y.
1926	169-5-30-2A	Concrete	18'	8-7-8	Transferred from C.S. 7007 (T.H. 169) in 1935
1955	A.F.E. 828	Gravel Base Mixed Bit.	* 6' 24'	3'-4" 1 1/2-3"	Bit. Mix (approx) 177 Tons * 18' Conc base widened
1957	7003-01	Grav. Base Widening Bit. Base Widening Pl. Mix Bit.	8'-4" 8'-4" 8'-7"	10" 2" 3"	
1958	A.F.E. 820	Erosion Control			
1959	A.F.E. 605	Light Bit. Seal	27'		RC-2, 1298 Gal. Agg. 50 C.Y.
1960		Bit Seal Coat	25'		RT-10, 6866 Gal. Agg. 259 C.Y.
1961		Spot Treat Bit. Surf. Repair	24'		Plant Mix 130 Tons MC 3, 190 Gal. Tack



YEARS		TOTAL MILES	UNINCORPORATED		INCORPORATED		RURAL		URBAN	
FROM	TO		RDWY. MI.	BR. MI.	RDWY. MI.	BR. MI.	RDWY. MI.	BR. MI.	RDWY. MI.	BR. MI.
1921	1934	1.50	0.00	0.00	1.50	0.00	0.00	0.00	1.50	0.00
1935	1954	0.68	0.00	0.00	0.68	0.00	0.00	0.00	0.68	0.00
1955		1.54	0.00	0.00	1.54	0.00	0.00	0.00	1.54	0.00

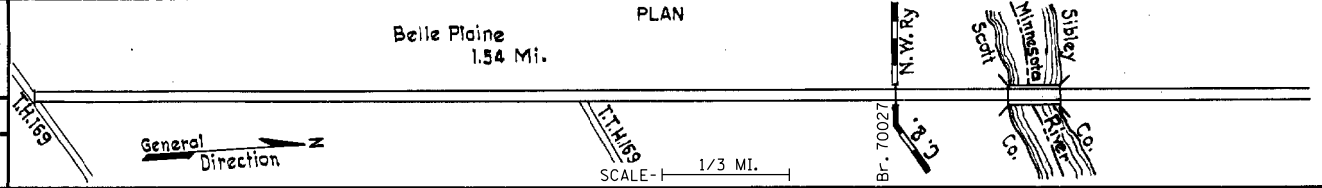
REMARKS: Layout is to scale as of 1935

PREPARED BY
TRAFFIC AND PLANNING DIVISION
IN COOPERATION WITH
U.S. DEPARTMENT OF COMMERCE
BUREAU OF PUBLIC ROADS

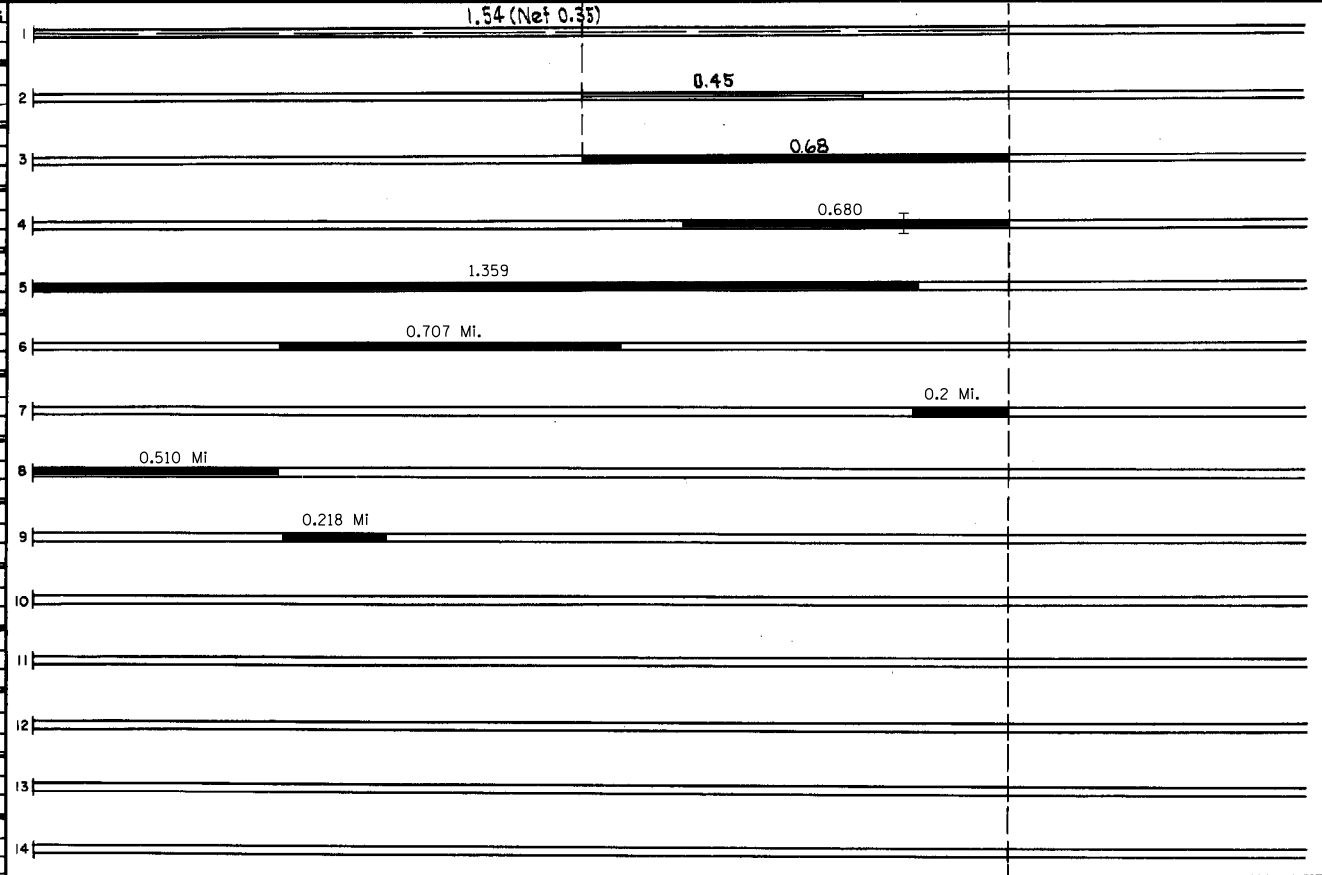
STATE OF MINNESOTA
DEPARTMENT OF HIGHWAYS
ROAD LIFE STUDIES
CONSTRUCTION PROJECT LOG RECORD

CONTROL SECTION 7003
TRUNK HIGHWAY 25
COUNTY Scott
DISTRICT Metro

LIMITS: in Belle Plaine
Jct. T.H. 169 - S. End of Bridge (Minn. River)
Ref. Pt. 000+00.000 - 002+00.020



YEAR BUILT	PROJECT NO	DESCRIPTION			
		TYPE	WIDTH	THICKNESS	REMARKS
M 1963	SF	Spot treat Bit. Surf. Repair	24'		Plant Mix Bit. 145 Tons MC-3 Tack 225 Gal.
M 1964	SF	Bit. Surf. Repair	24'		Road Mix 322 Tons MC-3 Tack 300 Gal.
C 1970	7003-03	Grade Base Pl Mix Bit Surf. Gray Shldr. B624C&G	24'-44"	16" 3"	
C 1987	7003-06	Grading Bit. Surfacing Br. 70027	24'	Var.	Spec 2331, 2341 Replaces Br. 5269
C 1990	M4405	Bit. Overlay	24'-76'	2"	Spec. 2341
S 2005	7003-10	Bit. Mill & Overlay	24'	7"	Spec. 2360
S 2006	7209-08	Grading Bit. Surfacing Br. 72012	24'	var.	Spec. 2360
S 2007	7008-45	Grading Bit. Surfacing Aggregate	24'	26' 7' 24' 9"	Bit Shldr 8", 4" Spec. 2360 Class 5
S 2010	7003-112	Grading Bit. Surfacing Aggregate	4' 16'-18'	4' 7' 9"	Edge drain Bit. Shldr & TL Class 5 Spec. 2360



YEARS		TOTAL MILES	UNINCORPORATED		INCORPORATED		RURAL		URBAN	
FROM	TO		RDWY. MI.	BR. MI.	RDWY. MI.	BR. MI.	RDWY. MI.	BR. MI.	RDWY. MI.	BR. MI.

REMARKS: Layout is to scale as of 1935