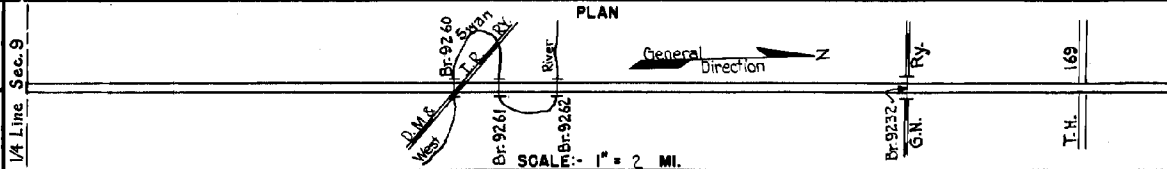


PREPARED BY  
HIGHWAY PLANNING SURVEY  
IN COOPERATION WITH  
U. S. PUBLIC ROADS ADMINISTRATION

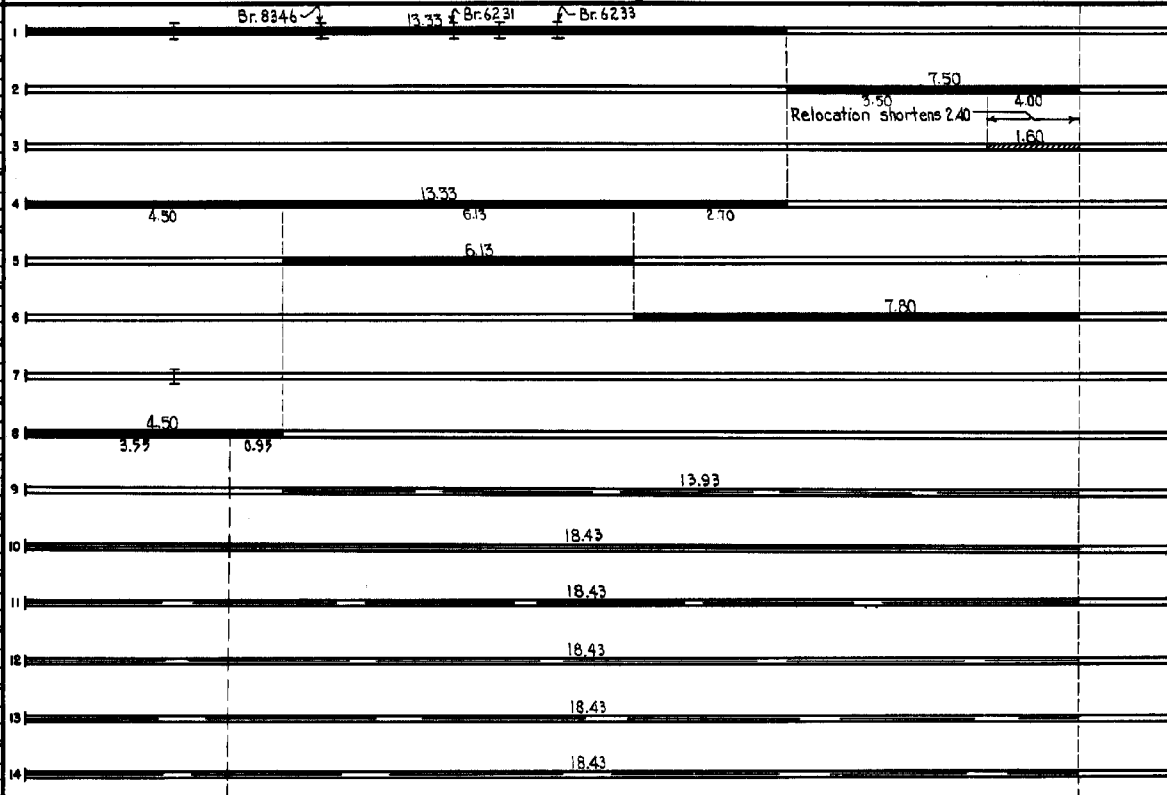
STATE OF MINNESOTA  
DEPARTMENT OF HIGHWAYS  
ROAD LIFE STUDIES  
CONSTRUCTION PROJECT LOG RECORD

CONTROL SECTION 6979  
TRUNK HIGHWAY 73  
COUNTY St. Louis  
DISTRICT 18

LIMITS: E.W. 1/4 Line Sec. 9, T.54 N., R.21 W. - S. Jct. T.H. 169.



YEAR BUILT	PROJECT N <sup>o</sup>	DESCRIPTION			CODE N <sup>o</sup>
		TYPE	WIDTH	THICKNESS	
		Earth	20'		No Record of Constr. Added in 1934.
		5-Bridges (1)	16'2"		
		Gravel	20'	2"	No Record of Constr. Added in 1934.
		Gravel	20'	2"	No Record of Constr. Added in 1936.
1936		Gravel	18'	3"	Maint. Dept.
1937	A.F.E. 19	Bit Surf. Treat	24'	3/4"	Maint. Dept.
1938	A.F.E. 16	Bit Surf. Treat	24'	5/8"	Maint. Dept.
1939		Br. 8345	23'		18 B.S. Maint. Dept.
C					
1940	A.F.E. 12	Bit Surf. Treat	22'	3/4"	Maint. Dept.
M		Spot Treat.			SC3, 3162 Gal./Mi.
1940	A.F.E. 20	Bit Surf. Repair			Sand 34 C.Y./Mi. Maint. Dept.
M		Spot Treat.			SC3 & RC3, 23916/Mi.
1941	A.F.E. 22	Bit Surf. Repair & Fog Seal.	24'		Sand 15 C.Y./Mi. Maint. Dept.
M		Spot Treat.			RC3 & MG2, 8296/Mi.
1942	A.F.E. 4	Bit Surf. Repair	24'		Grav. 9 C.Y./Mi. Maint. Dept.
M		Spot Treat.			MC2, 224 Gal./Mi.
1943	A.F.E. 4	Bit Surf. Repair	24'		Agg. 11 C.Y./Mi. Maint. Dept.
M		Spot Treat.			MC2, 1148 Gal./Mi.
1944	A.F.E. 4	Bit Surf. Repair	24'		Agg. 19 C.Y./Mi. Maint. Div.
M		Spot Treat.			MG2, 1735 Gal./Mi.
1945	A.F.E. 4	Bit Surf. Repair	24'		Agg. 97 C.Y./Mi. Maint. Div.



YEARS		TOTAL MILES	UNINCORPORATED		INCORPORATED		RURAL		URBAN	
FROM	TO		RDWY. MI.	BR. MI.	RDWY. MI.	BR. MI.	RDWY. MI.	BR. MI.	RDWY. MI.	BR. MI.
1934	1935	20.83	20.55	0.03	0.25	0.00	20.55	0.03	0.25	0.00
1936	1936	15.43	16.40	0.03	0.00	0.00	18.40	0.03	0.00	0.00
1937	1938	7.80	17.43	0.07	0.00	0.00	17.43	0.07	0.00	0.00
1939		16.80	16.73	0.07	0.00	0.00	16.73	0.07	0.00	0.00

REMARKS: Layout is to scale as of 1936.  
(1) Br. 8345, 18 Log Span; Br. 8346, 18 B.S.; Br. 6231, 50 B.S.; Br. 6232, 35 B.S.; Br. 6233, 20 C.S.

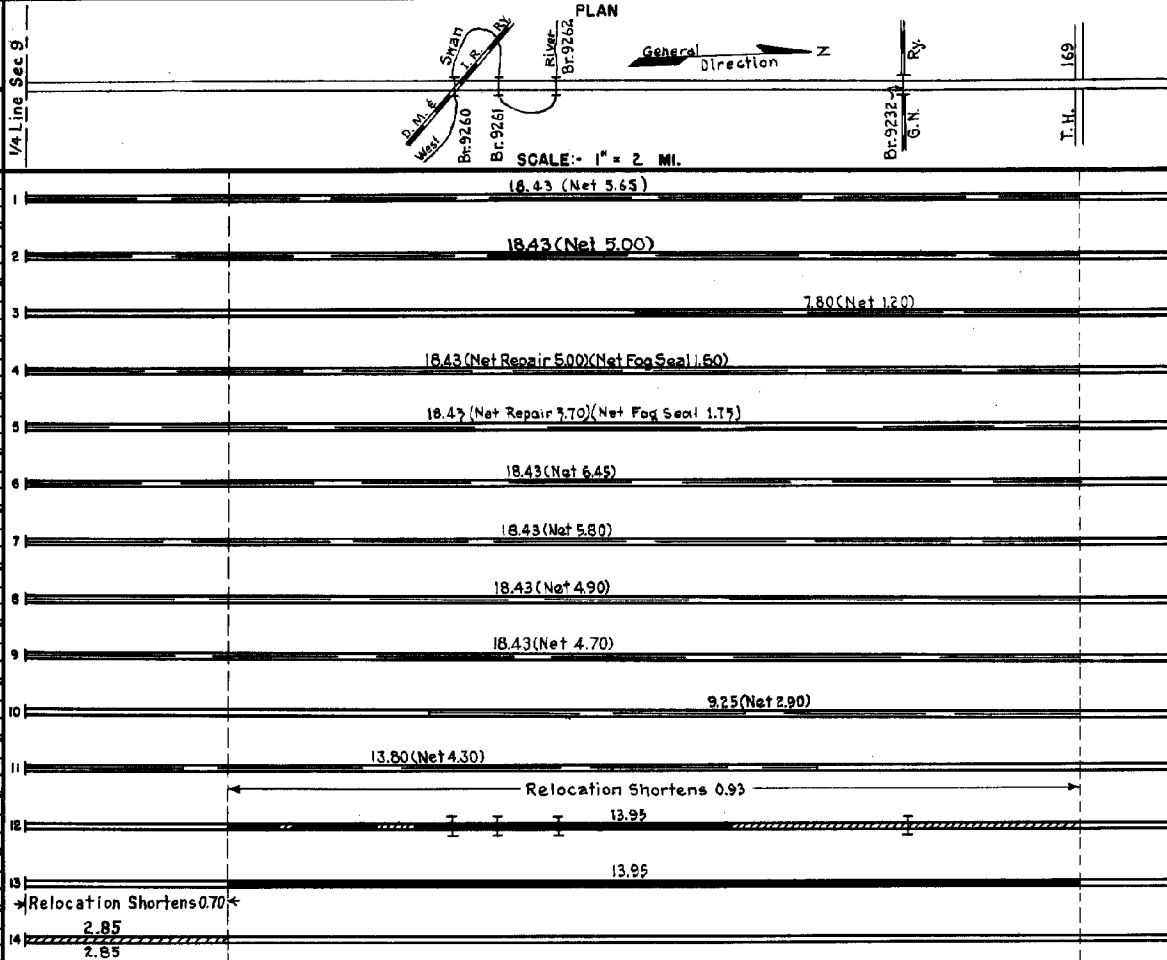
PREPARED BY  
HIGHWAY PLANNING SURVEY  
IN COOPERATION WITH  
U.S. PUBLIC ROADS ADMINISTRATION

STATE OF MINNESOTA  
DEPARTMENT OF HIGHWAYS  
ROAD LIFE STUDIES  
CONSTRUCTION PROJECT LOG RECORD

CONTROL SECTION 6929  
TRUNK HIGHWAY 73  
COUNTY St. Louis  
DISTRICT 18

LIMITS: E.W. 1/4 Line Sec. 9, T54 N., R.21 W. - S. Jct. T.H. 169

YEAR BUILT	PROJECT NO	DESCRIPTION			CODE NO
		TYPE	WIDTH	THICKNESS	
M 1945	A.F.E. 4	Spot Treat. Bit. Surf. Repair	22'		SC3, 37544 Gal. Agg. 2025 C.Y.
M 1947	A.F.E. 4	Spot Treat. Bit. Surf. Repair	24'		MC-3, 40313 Gal. Agg. 2588 Tons
M 1948	A.F.E. 4	Spot Treat. Bit. Surf. Repair	24'		MC-2&SC3, 7761 Gal. Agg. 447 C.Y.
M 1949	A.F.E. 4	Spot Treat. Bit. Surf. Repair & Fog Seal (Spot)	24'		SC-3, 39471 Gal. Agg. 2202 C.Y.
M 1950	A.F.E. 4	Spot Treat. Bit. Surface Repair Fog Seal (Spot)	24'		SC-3, 27762 Gal. Agg. 1970 C.Y.
M 1951	A.F.E. 4	Spot Treat. Bit. Surf. Repair	24'		SC3, 48291 Gal. Agg. 2988 C.Y.
M 1952	A.F.E. 4	Spot Treat. Bit. Surf. Repair	24'		SC3&MC2, 35563 Gal. Agg. 2020 C.Y.
M 1953	A.F.E. 604 A.F.E. 821	Spot Treat. Bit. Surf. Repair Sag & Base Repairs	24'		SC3, 26231 Gal. Agg. 2606 Tons 145 Tons Bit. Mixture
M 1954	A.F.F. 604	Spot Treat. Bit. Surf. Repair	24'		MC-2, 26202 Gal. Agg. 2184 Tons
M 1955	A.F.E. 604	Spot Treat. Bit. Surf. Repair	24'		MC-2, 17440 Gal. Agg. 1912 Tons
M 1956	A.F.E. 604	Spot Treat. Bit. Surf. Repair	24'		MC-2, 9587 Gal. Agg. 765 Tons
C 1957	6929-04 6929-02 6929-03	Grading Gravel Base Mixed Bit. (Base)	40' 48' 26'	3" 1 1/2"	Bridges (2) on 11" Sand-Grav. Sub-base
C 1958	6929-05	Plant Mix Bit	24'	1 1/2"	
C 1959	6929-07	Grading Gravel Base Mixed Bit. (Base)	48' 40' 26'	4" 1 1/2"	on 8" Sand-Grav Sub- base. 36,229 Gal.



YEARS FROM	TO	TOTAL MILES	UNINCORPORATED		INCORPORATED		RURAL		URBAN	
			RDWY. MI.	BR. MI.	RDWY. MI.	BR. MI.	RDWY. MI.	BR. MI.	RDWY. MI.	BR. MI.

REMARKS: See Sheet No. 1.  
(2) 3' Precast channels with 32 1/2' rdwys. (Br. 9260, 93) (Br. 9261, 75) & (Br. 9262, 75) & Concrete Girder 0.8M. with 30' rdwy. (Br. 9232, 126)

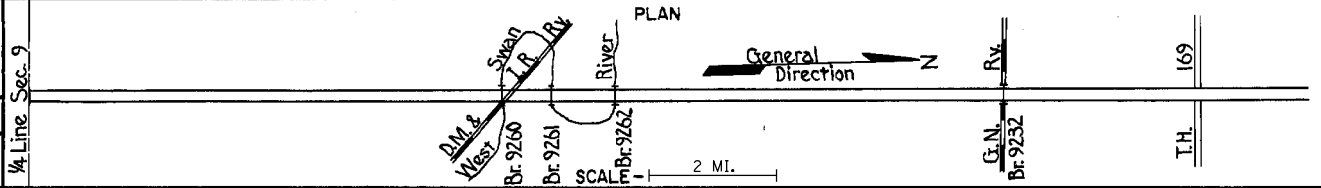
PREPARED BY  
TRAFFIC AND PLANNING DIVISION  
IN COOPERATION WITH  
U.S. DEPARTMENT OF COMMERCE  
BUREAU OF PUBLIC ROADS

STATE OF MINNESOTA  
DEPARTMENT OF HIGHWAYS  
ROAD LIFE STUDIES  
CONSTRUCTION PROJECT LOG RECORD

CONTROL SECTION 6929  
TRUNK HIGHWAY 73  
COUNTY St. Louis  
DISTRICT 1b

LIMITS: E.W. 1/4 Line Sec. 9, T 54 N, R 21 W. - S. Jct. T.H. 169

Ref. Pt. 062+00.103 - 078+00.846



YEAR BUILT	PROJECT NO.	DESCRIPTION	WIDTH	THICKNESS	REMARKS
M 1962		Light Bit. Seal	25'		RS-2, 5410 Gal. Agg. 200 C.Y.
C 1971	6929-08	Pl. Mix Bit. Surf. Gravel Shoulders	24'	3"	
M 1979	6929-9260, 1, 2	DECK RESTORATION & OVERLAY ON BRIDGES #9260, 9261, 9262			OVER SWAN R. S. OF HIBBING
M 1987	SF	Spot Overlay	24'	3/4"	Spec. 2331
C 2000	6929-18	Bit. Overlay Bit. Shldrs	24' 6'	3" 2.56"	Spec. 2350
2013	6928-29	Microsurfacing	24'		Type 2

1	2.85				
2	2.85				
3					
4					10.866 Mi.
5					16.791 Mi.
6					16.623 Mi. net
7					
8					
9					
10					
11					
12					
13					
14					

YEARS		TOTAL MILES	UNINCORPORATED		INCORPORATED		RURAL		URBAN	
FROM	TO		RDWY. MI.	BR. MI.	RDWY. MI.	BR. MI.	RDWY. MI.	BR. MI.	RDWY. MI.	BR. MI.

REMARKS: See Sheet No. 1