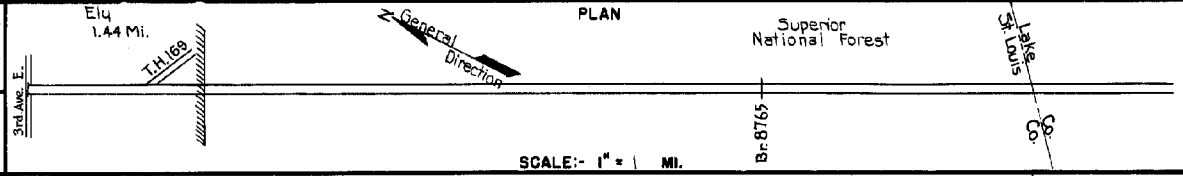


PREPARED BY
HIGHWAY PLANNING SURVEY
IN COOPERATION WITH
U.S. PUBLIC ROADS ADMINISTRATION

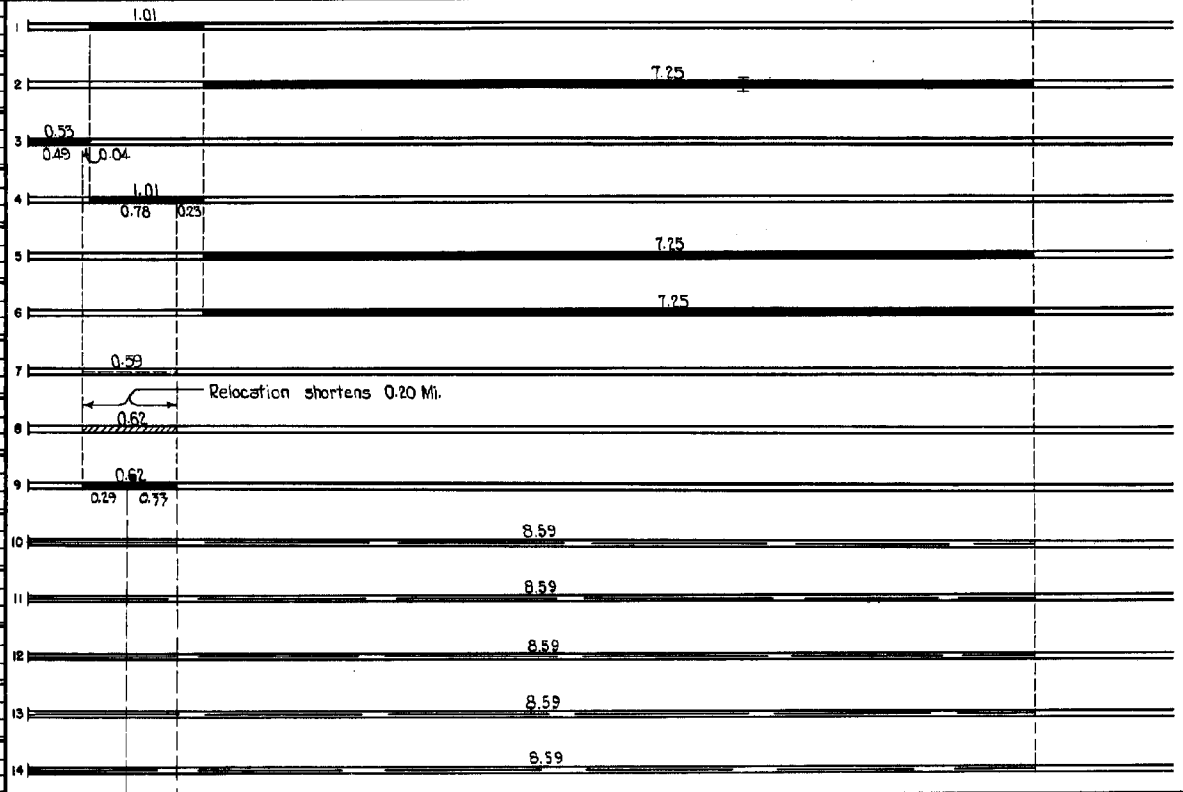
STATE OF MINNESOTA
DEPARTMENT OF HIGHWAYS
ROAD LIFE STUDIES
CONSTRUCTION PROJECT LOG RECORD

CONTROL SECTION 6905
TRUNK HIGHWAY St. Louis
COUNTY St. Louis
DISTRICT 1B

LIMITS: Intersection of Sheridan and 3rd Ave. E. to Fly-E Co. Line.



YEAR BUILT	PROJECT N ^o	DESCRIPTION			CODE N ^o
		TYPE	WIDTH	THICKNESS	
		Gravel	28'	3"	No Record of Constr. Added in 1934.
		Earth	28'		No Record of Constr. Added in 1934.
		Br. 6349	16'		90' H.T.
		Tar Tr. Gravel	42'	1"	No Record of Constr. Added in 1934.
1935		Tar Tr. Gravel	30'	1"	Maint. Dept.
1935		Gravel	18'	3"	Maint. Dept.
	1936 A.F.E. 44	Clay Stab. Gravel	16'	9"	
1937	1937 A.F.E. 9&11	Mixed Bit.	16'	1 1/2"	Maint. Dept.
1938	A.F.E. 78	Grading	40'		Not used as T. Hunt II 1940. Not completed. Maint. Dept.
C	1940 6905-02	Grading	40'		Completion of grading begun as 1938 A.F.E. 78.
		Stab. Gravel Base	40'	4"	
C	1940 A.F.E. 11	Mixed Bit.	24'	1"	
					Maint. Dept.
M	1940 A.F.E. 19	Spot Treat.			SC 3,349 Gal./Mi.
		Bit. Surf. Repair			Grav. 64 C.Y./Mi.
					Maint. Dept.
M	1941 A.F.E. 24	Spot Treat.			SC 3,1249 Gal./Mi.
		Bit. Surf. Repair	20'		
					Maint. Dept.
M	1942 A.F.E. 4	Spot Treat.			SC 3,1038 Gal./Mi.
		Bit. Surf. Repair	21'		Grav. 14 C.Y./Mi.
					Maint. Dept.
M	1943 A.F.E. 4	Spot Treat.			F.O. 2 & MG 2, 8136 /Mi.
		Bit. Surf. Repair	20'		
					Maint. Dept.
M	1944 A.F.E. 4(A&B)	Spot Treat.			MG 2, 973 Gal./Mi.
		Bit. Surf. Repair	20 1/2'		App. 25 C.Y./Mi.
					Maint. Div.



YEARS		TOTAL MILES	UNINCORPORATED		INCORPORATED		RURAL		URBAN	
FROM	TO		RDWY. MI.	BR. MI.	RDWY. MI.	BR. MI.	RDWY. MI.	BR. MI.	RDWY. MI.	BR. MI.
1934	1939	8.79	7.23	0.02	1.54	0.00	7.23	0.02	1.54	0.00
1940	1948	8.59	7.23	0.02	1.34	0.00	7.23	0.02	1.34	0.00
1949	1955	8.33	6.99	0.00	1.34	0.00	6.99	0.00	1.34	0.00
1956		8.43	6.99	0.00	1.44	0.00	6.99	0.00	1.44	0.00

REMARKS: Layout is to scale as of 1934.

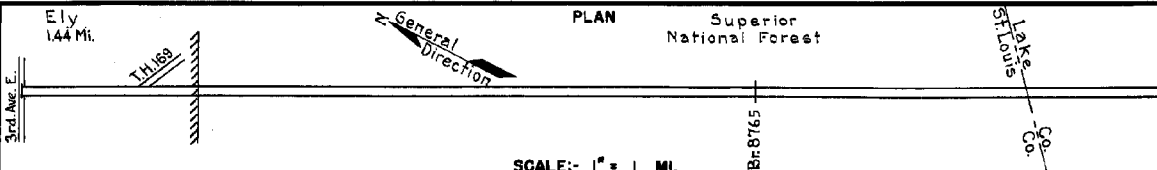
4-75

PREPARED BY
HIGHWAY PLANNING SURVEY
IN COOPERATION WITH
U.S. PUBLIC ROADS ADMINISTRATION

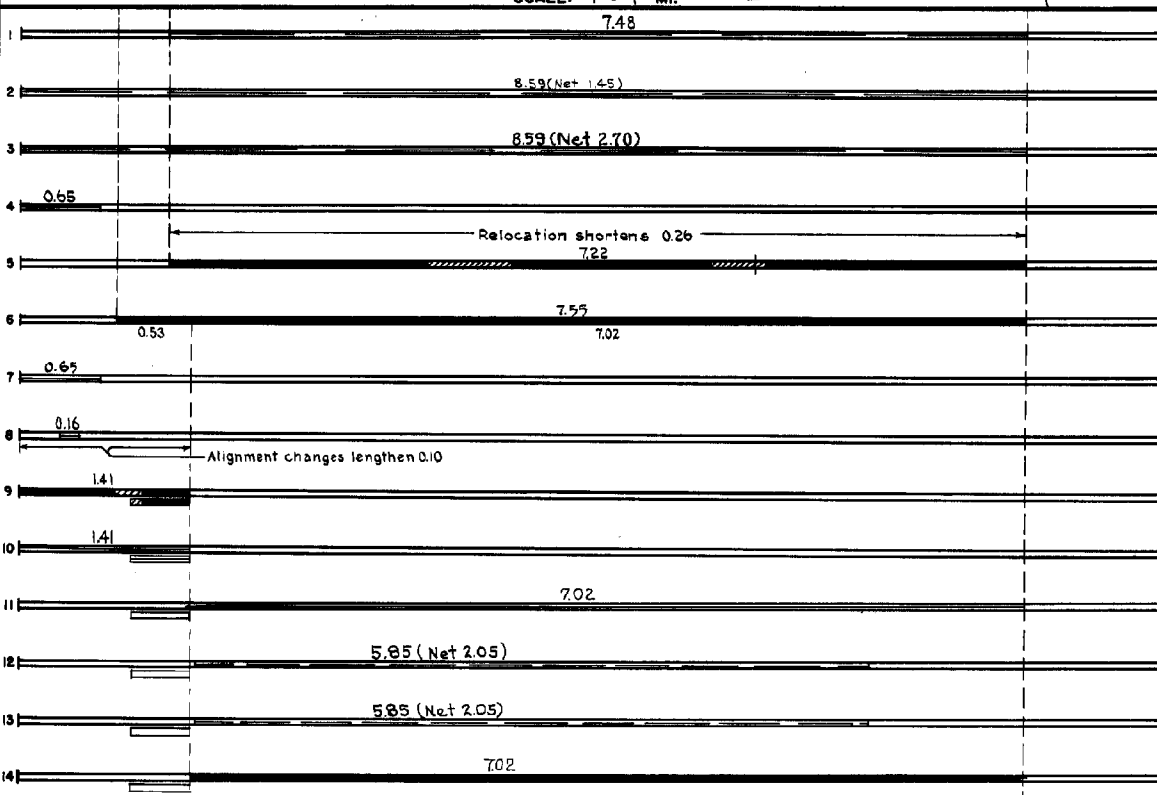
STATE OF MINNESOTA
DEPARTMENT OF HIGHWAYS
ROAD LIFE STUDIES
CONSTRUCTION PROJECT LOG RECORD

CONTROL SECTION 6905
TRUNK HIGHWAY St. Louis
COUNTY St. Louis
DISTRICT 18

LIMITS: Intersection of Sheridan and 3rd Ave. E. in Ely - E. Co. Line



YEAR BUILT	PROJECT N°	DESCRIPTION			CODE N°
		TYPE	WIDTH	THICKNESS	
M 1945	A.F.E. 4	Spot Treat. Bit. Surf. Repair	20'±		1
M 1946	A.F.E. 4	Spot Treat. Bit. Surf. Repair	20'		2
M 1947	A.F.E. 4	Spot Treat. Bit. Surf. Repair	21'		3
M 1949	A.F.E. 4	Bit. Surf. Repair	20'±		4
C 1949	6905-07	Grading Gravel Br. 8765	24' 24'	3"	5
C 1950	6905-10	Plant Mix Bit.	22'±	1 1/2"	6
M 1950	A.F.E. 4	Bit. Seal Coat	22'±		7
M 1952	A.F.E. 19 A.F.E. 25	Frost Boil Excavation & Backfill Restore Bit. Surf.	32'		8
C 1956	6905-11	Sand-Grav. Sub-base Bit. Stab. Base Plant Mix Bit.	12" 6" 3"		9
M 1957	A.F.E. 605	Bit. Seal Coat			10
M 1960		Light Bit. Seal	25'		11
M 1968	SF	Gravel Lift	24'	Var.	12
M 1969	SF	Bit. Pen. Prime	24'		13
C 1970	6905-14	Pl. Mix Bit. Surf. Gravel Shoulders	22'	1 1/2"	14



YEARS		TOTAL MILES	UNINCORPORATED		INCORPORATED		RURAL		URBAN		REMARKS: See Sheet N°1
FROM	TO		RDWY. MI.	BR. MI.	RDWY. MI.	BR. MI.	RDWY. MI.	BR. MI.	RDWY. MI.	BR. MI.	

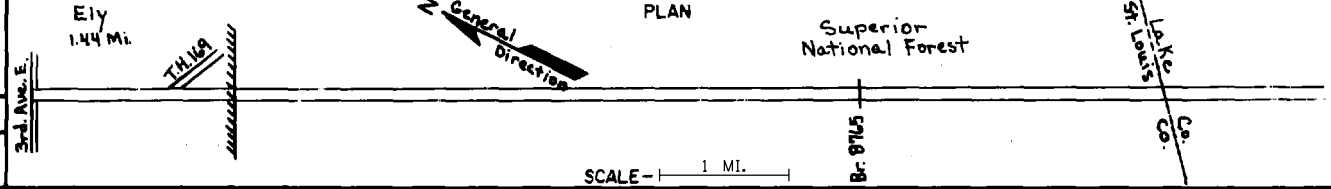
4-75

PREPARED BY
TRANSPORTATION PLANNING AND PROGRAMMING DIVISION
IN COOPERATION WITH
U.S. DEPARTMENT OF TRANSPORTATION - FEDERAL HIGHWAY ADMINISTRATION

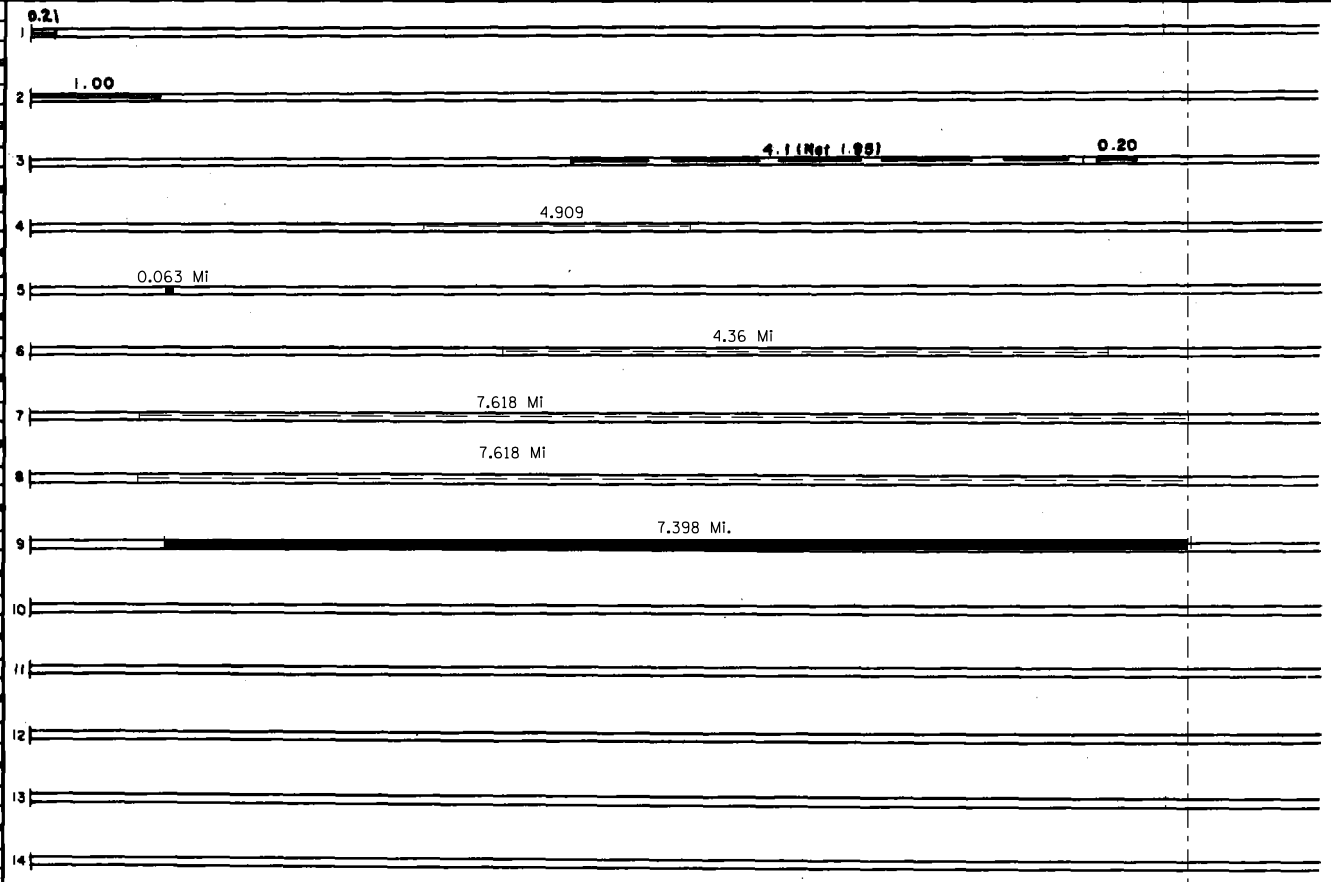
STATE OF MINNESOTA
DEPARTMENT OF HIGHWAYS
ROAD LIFE STUDIES
CONSTRUCTION PROJECT LOG RECORD

CONTROL SECTION 6905
TRUNK HIGHWAY 1
COUNTY St. Louis
DISTRICT 1A

LIMITS: Intersection of Sheridan and 3rd Ave. E. in Ely - E. Co. Line
Ref. Pt. 285+00.247 - 293+00.606



YEAR BUILT	PROJECT NO	DESCRIPTION				REMARKS
		TYPE	WIDTH	THICKNESS		
M 1973	SF	Bit. Skin Coat				
C 1981	6905-16	Bit. Surfacing	Var.	3/4"	Sp. 2361	
M 1984	SF	Spot Bit. Overlay Crack Repair Rut Repair			Sp. 2331 1160 Tons	
M 1984	SF	Rut Repair				
C 1997	6905-18	Bit. Overlay	24'	1 1/2"	Spec. 2331	
C 2000	6905-19	Gravel Shoulder	4'	1"	Class 1	
M 2001	8821-58	Major Bituminous Crack Sealing				
M 2000	8821-31	Crack Sealing				
		Milling	34'	3"		
	6905-20	Bit. Overlay	34'	3"	Spec. 2360	



YEARS		TOTAL MILES	UNINCORPORATED		INCORPORATED		RURAL		URBAN	
FROM	TO		RDWY. MI.	BR. MI.	RDWY. MI.	BR. MI.	RDWY. MI.	BR. MI.	RDWY. MI.	BR. MI.

REMARKS: Layout is to scale as of 1934