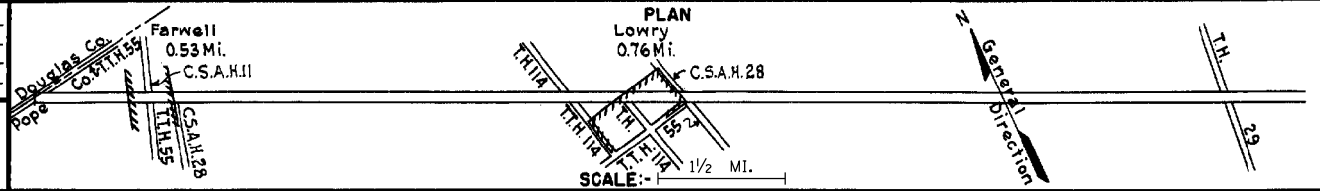


PREPARED BY
HIGHWAY PLANNING SURVEY
IN COOPERATION WITH
U.S. PUBLIC ROADS ADMINISTRATION

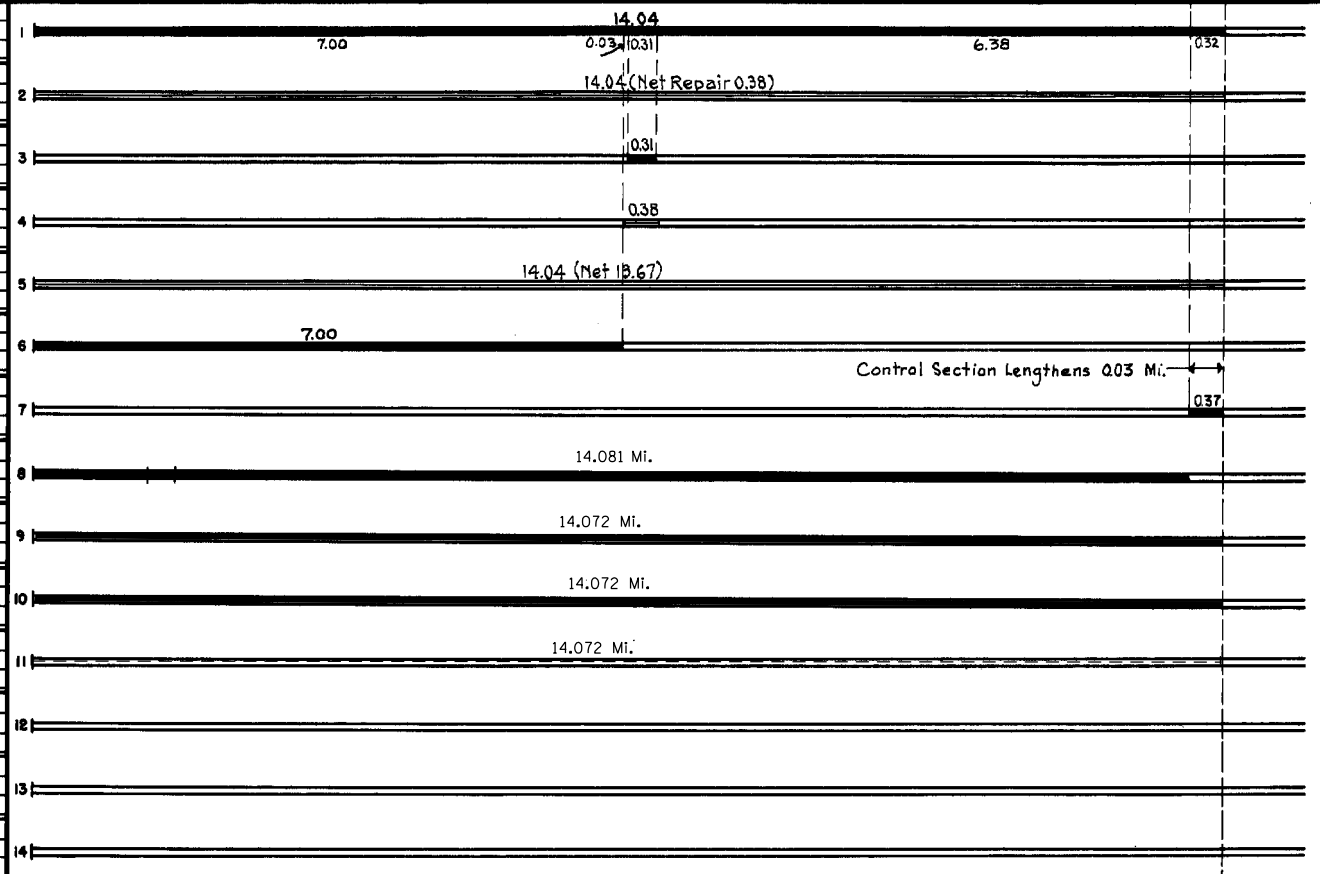
STATE OF MINNESOTA
DEPARTMENT OF HIGHWAYS
ROAD LIFE STUDIES
CONSTRUCTION PROJECT LOG RECORD

CONTROL SECTION 6107
TRUNK HIGHWAY 55
COUNTY Pope
DISTRICT 4B

LIMITS: No. Co. Line - Jct. T.H. 29
Ref. Pt. 054+00.738 - 068+00.810



YEAR BUILT	PROJECT N ^o	DESCRIPTION			CODE N ^o
		TYPE	WIDTH	THICKNESS	
C	1950 6107-03	Spot Grav. Base Plant Mix Bit.	24'	1 1/2" added	
M	1952 A.F.E. 24 A.F.E. 5	Spot Base Repair Restore Bit. Surf. Light Bit. Seal (14.04 Mi)			
C	1956 6107-04	Gravel Sub-base Bit. Stab. Base Plant Mix Bit.	26' 26' 50'	12" 4" 1 1/2"-3"	13' Rt. & Lt. 13' Rt. & Lt.
M	1957 A.F.E. 605	Bit. Seal Coat			RT-10, 2119 Gal. Agg. 91 C.Y.
M	1959 A.F.E. 605	Light Bit. Seal	25'		RC-2, 25025 Gal. Agg. 869 C.Y.
C	1968 6107-07	Pl. Mix. Bit. Surf. Gravel Shldr.	24'	1 1/2"	Bit. Mat'l. 456 Ton
C	1971 6107-05	Grade, Gr. Sub-base Pl. Mix Bit. Base Pl. Mix Bit. Surf.		12" 1 1/2" 24' 3"	Gravel Shoulders 8' Rt. & Lt.
C	1982 6107-09	Bit. Surfacing Culvert Extension Rt. Turn Lanes	28'	2 1/2"	
	2000 8824-19	Bit. Overlay	28'	1.5"	Spec. 2350
	2010 6107-11	Reclamation Bit. Overlay	24'	5"	Spec. 2360
	2014 8824-116	Aggregate Shouldering RT & LT	2'	2"	Class 1



YEARS FROM TO		TOTAL MILES	UNINCORPORATED		INCORPORATED		RURAL		URBAN	
RDWY. MI.	BR. MI.	RDWY. MI.	BR. MI.	RDWY. MI.	BR. MI.	RDWY. MI.	BR. MI.	RDWY. MI.	BR. MI.	

REMARKS: See Sheet No. 1