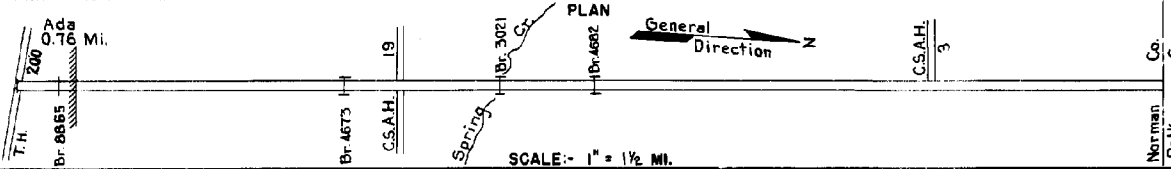


PREPARED BY
HIGHWAY PLANNING SURVEY
IN COOPERATION WITH
U.S. PUBLIC ROADS ADMINISTRATION

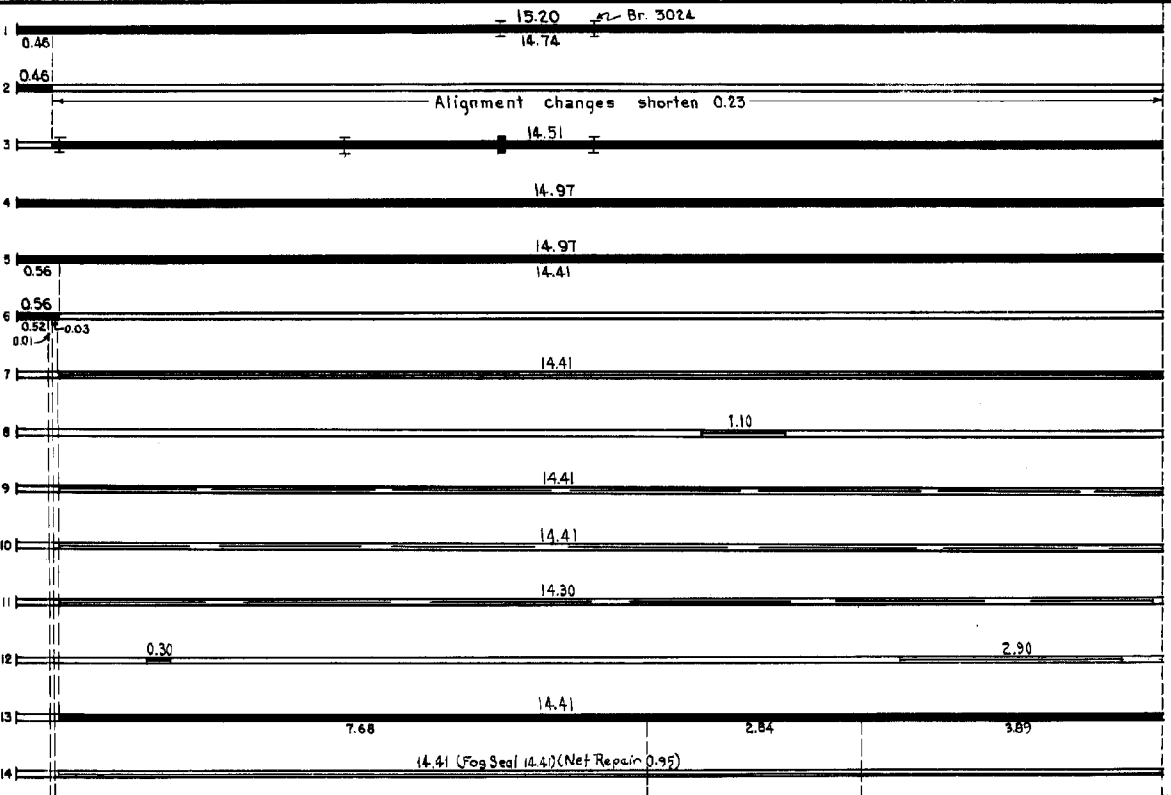
STATE OF MINNESOTA
DEPARTMENT OF HIGHWAYS
ROAD LIFE STUDIES
CONSTRUCTION PROJECT LOG RECORD

CONTROL SECTION 5408
TRUNK HIGHWAY 9
COUNTY Norman
DISTRICT 28

LIMITS: Jct. T.H.200 in Ada - N. Co. Line



YEAR BUILT	PROJECT NO.	DESCRIPTION			CODE NO. DIST.
		TYPE	WIDTH	THICKNESS	
		Earth	22'		No Record of Const. 23 C.D.G. & 20 C.S.
1926	75-6-40-2A	Grading	30'		
1926	75-6-40-2A&B	Grading	30'		60 T.P.G., 60' L.T. 23 C.D.G. (wid) 20 C.S.
1927	75-6-40-2A&B	Gravel	24'	1"	500 C.Y./Mile.
1928	75-6-40-2	Oil Tr Gravel	24'	2"	5266 Gal./Mile. Maint. Dept.
1935	75-6-40-2A&B	Concrete	24'	9"-9"	223.5
M 1940	A.F.E. 17	Bit. Retreat Grav. Lifts (Spots) Frost Boil Corr.			SC3&4, 5845 Gal./Mi. Grav. 109 C.Y./Mi. Maint. Dept.
M 1941	A.F.E. 25 A.F.E. 41	Bit. Retreat Grade Lift Frost Boil Corr.	28'	6"	SC4, 11157 Gal./Mi. Grav. 527 C.Y./Mi. Maint. Dept.
M 1942	A.F.E. 4 A.F.E. 5 A.F.E. 16	Spot Treat. Bit. Surf. Repair Frost Boil Treat.	24'		RT, SC&RC3, 16046/Mi. Agg. 64 C.Y./Mi. Maint. Dept.
M 1943	A.F.E. 4	Spot Treat. Bit. Surf. Repair	24'		RT, 4672 Gal./Mi. Maint. Dept.
M 1944	A.F.E. 4	Spot Treat. Bit. Surf. Repair & Spot Seal Coat	24'		RT6, 3144 Gal./Mi. Grav. 112 C.Y./Mi. Maint. Div.
M 1945	A.F.E. 4	Bit. Surf. Repair	24'		Bit. 8417 Gal./Mi. Grav. 410 C.Y./Mi. Maint. Div.
C 1946	A.F.E. 24 A.F.E. 18	Sand-Gravel Lift Bit. Surfacing Mixed Bit.	30'	9"	Bit. 164,106 Gal. Agg. 5168 C.Y.
M 1950	A.F.E. 4	Spot Treat. Bit. Surface Repair Bit. Fog Seal	24'		SC-3 & RCS-1, 28289 Gal. Agg. 870 C.Y.



YEARS FROM	TO	TOTAL MILES	UNINCORPORATED		INCORPORATED		RURAL		URBAN	
			RDWY. MI.	BR. MI.	RDWY. MI.	BR. MI.	RDWY. MI.	BR. MI.	RDWY. MI.	BR. MI.
1927	1925	15.20	14.41	0.01	0.78	0.00	14.41	0.01	0.78	0.00
1926	1953	14.97	14.19	0.02	0.75	0.01	14.19	0.02	0.75	0.01
1954	1954	14.46	13.68	0.02	0.75	0.01	13.68	0.02	0.75	0.01
1955		14.46	13.68	0.02	0.76	0.00	13.68	0.02	0.76	0.00

REMARKS: Layout is to scale as of 1926

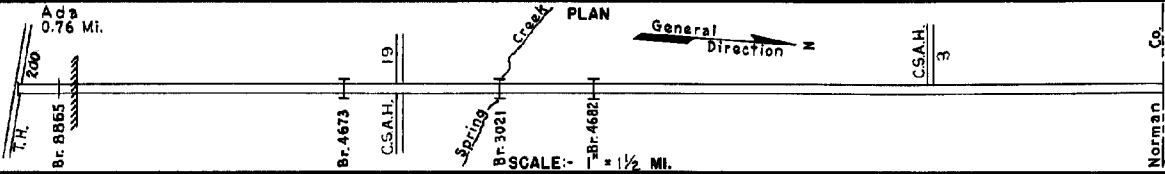
(1) This work not done under this project number but lies within the limits of this project.

PREPARED BY
HIGHWAY PLANNING SURVEY
IN COOPERATION WITH
U.S. PUBLIC ROADS ADMINISTRATION

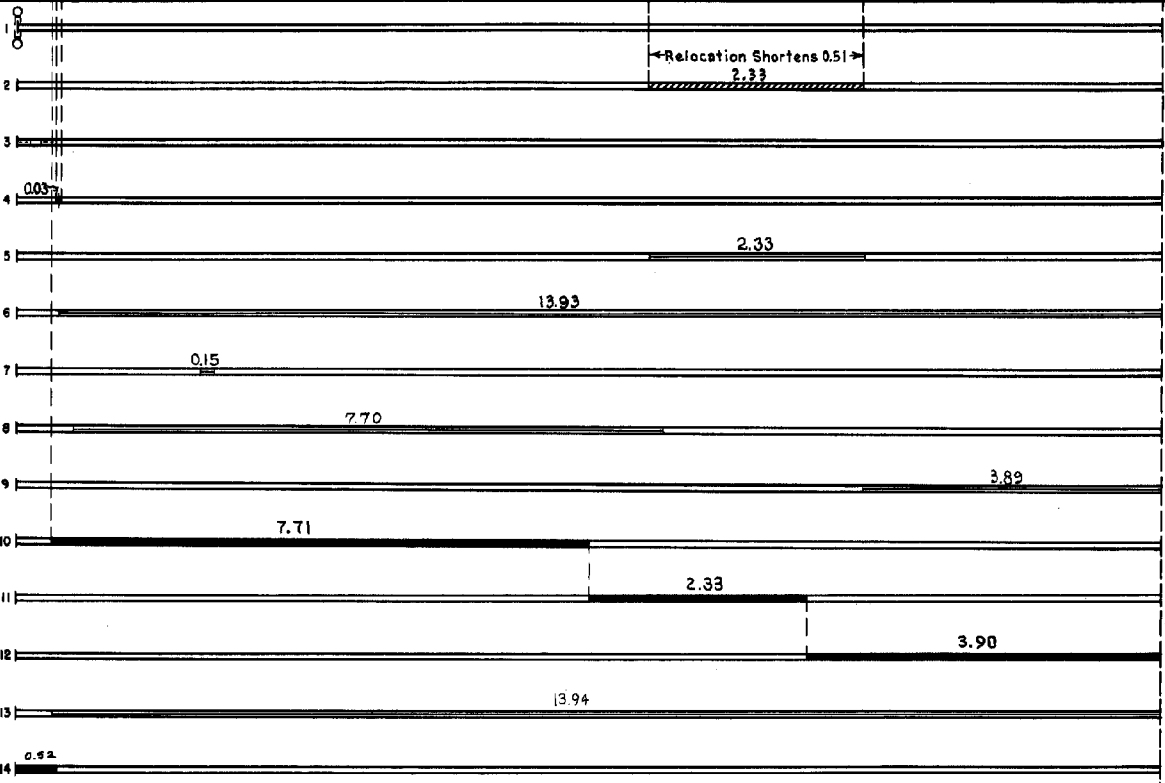
STATE OF MINNESOTA
DEPARTMENT OF HIGHWAYS
ROAD LIFE STUDIES
CONSTRUCTION PROJECT LOG RECORD

CONTROL SECTION 5408
TRUNK HIGHWAY 9
COUNTY Norman
DISTRICT 2B

LIMITS: Jct. T.H. 200 in Ada - N. Co. Line



YEAR BUILT	PROJECT NO.	DESCRIPTION			CODE NO. DIST.
		TYPE	WIDTH	THICKNESS	
C	1954 5408-03	Traffic Signals			953
C	1954 5408-06	Grading Gravel Base Mixed Bit. (Base)	32' 32' 15" 26'	1 1/2" 1 1/2" 1 1/2"	1754
C	1955 5408-02	Widening Concrete	30'	8"	1255
C	1955 5408-08	Gravel Base Mixed Bit. Br. 8865	40' 24'	9" min 3" min	1655
M	1955 A.F.E. 605	Light Bit. Seal	26'		
M	1957 A.F.E. 605	Light Bit. Seal	25'		
M	1957 A.F.E. 817	Base Repair Restore Bit. Surf.	24'		
M	1960	Bit. Surf. Repair	24'		
M	1962	Bit. Surf. Repair	24'		
C	1964 5408-11	Grading, Sub-Base* Gravel Base Plant mix Bit. (Base)	37' 37' 25'	4 1/2" 4 1/2" 2"	763
C	1964 5408-13	Plant mix Bit. (Base)	25'	1 1/2"	763
C	1964 5408-10	Grading, Sub-base* Gravel Base Plant mix Bit. (Base)	37' 37' 25'	7 1/2" 4 1/2" 2"	763
M	1966 C	Light Bit. Seal	26'		
C	1976 5408-16	APP. CONC. OVERLAY	50'	3/4"	1974



YEARS FROM	TO	TOTAL MILES	UNINCORPORATED		INCORPORATED		RURAL		URBAN	
			RDWY. MI.	BR. MI.	RDWY. MI.	BR. MI.	RDWY. MI.	BR. MI.	RDWY. MI.	BR. MI.

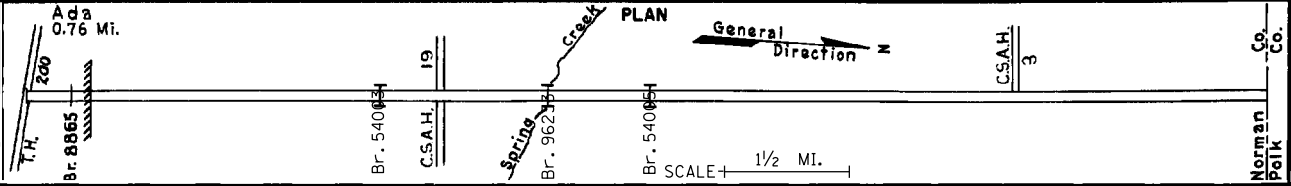
REMARKS: See Sheet No. 1

PREPARED BY
 TRANSPORTATION & TRANSIT PLANNING & PROGRAMMING DIVISION
 IN COOPERATION WITH
 U.S. DEPARTMENT OF TRANSPORTATION - FEDERAL HIGHWAY ADMINISTRATION

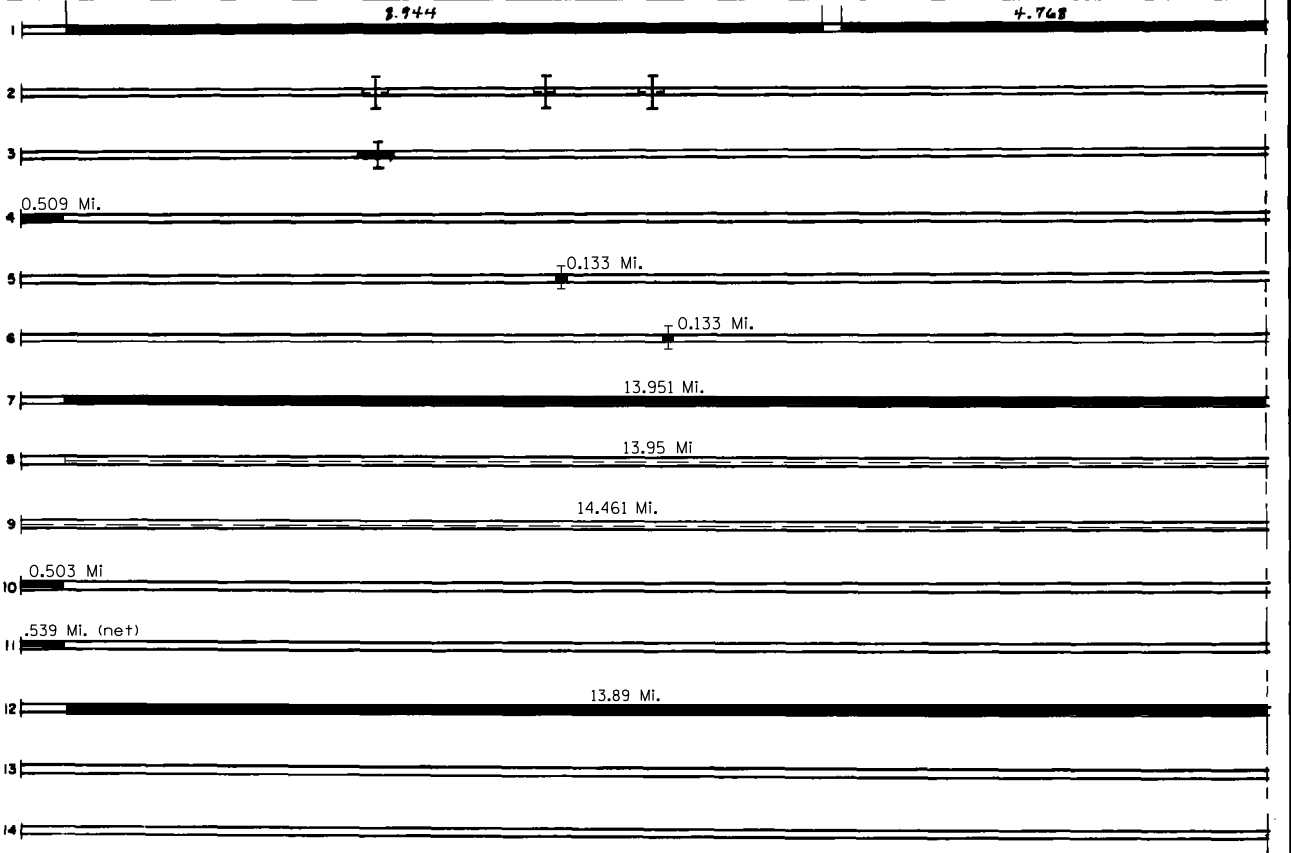
STATE OF MINNESOTA
 DEPARTMENT OF HIGHWAYS
 ROAD LIFE STUDIES
 CONSTRUCTION PROJECT LOG RECORD

CONTROL SECTION 5408
 TRUNK HIGHWAY 9
 COUNTY NORMAN
 DISTRICT 2B

LIMITS: Jct. MNTH-200 - Norman/Polk Co. Line
 Ref. Pt. 192+00.995 - 207+00.460



Dist. No.	YEAR BUILT	PROJECT NO.	DESCRIPTION			REMARKS
			TYPE	WIDTH	THICKNESS	
1974	C	5408-15	Pt. Mix Bit. Resurf Gravy. Shoulders Turn Lanes	24'	1 1/2" - 2"	
1774	C	1974 5400-03	PLATE BEAM GUARD RAIL AT BR. 4478, 3021, 4682			765 LIN. FT.
2079	C	1979 5408-11	Grading, Surfacing & Ac. Cuts	18' - 24'		0.252 MI.
1986	C	5408-19	Joint Repair Bit. Overlay	46'	1 1/2"	Spec. 2341
1989	C	5408-24	Grading, Surfacing Br. 96233	24'	3-6"	Spec. 2331 Repl. Br. 3021
1990	C	5408-22	Grading, Surfacing Br. 54005	24'	3-6"	Spec. 2331 Repl. Br. 4682
1991	C	5408-27	Bit. Overlay	24'	Var. 1 1/2"	Spec. 2331 Spec. 2341
1993	M	5408-93214	Major Crack Repair			
2002	S	8822-25	Bit. Seal Coat			
2005	C	5408-29	Milling & Bituminous Overlay	24'	3"	Spec 2360
2012	C	5408-28	Grading Concrete Paving	46'	7"	Spans -15 Ft.
2013	C	5408-30	Milling Reclamation Bit. Surfacing	28'	3" 28' 9" 28' 5"	Spec. 2360



YEARS		TOTAL MILES	UNINCORPORATED		INCORPORATED		RURAL		URBAN	
FROM	TO		RDWY. MI.	BR. MI.	RDWY. MI.	BR. MI.	RDWY. MI.	BR. MI.	RDWY. MI.	BR. MI.

REMARKS: See Other Projects See Dist. No. 1821