

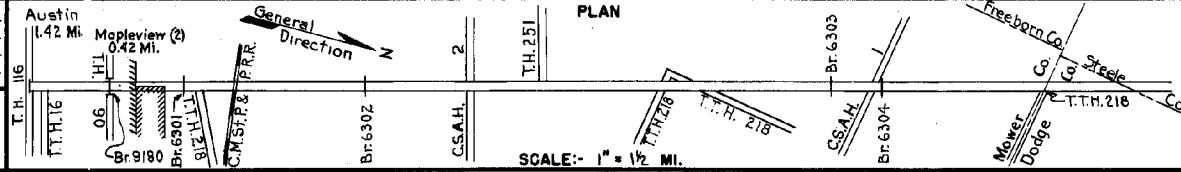
PREPARED BY
HIGHWAY PLANNING SURVEY
IN COOPERATION WITH
U.S. PUBLIC ROADS ADMINISTRATION

SEE SHEET
2 of 2

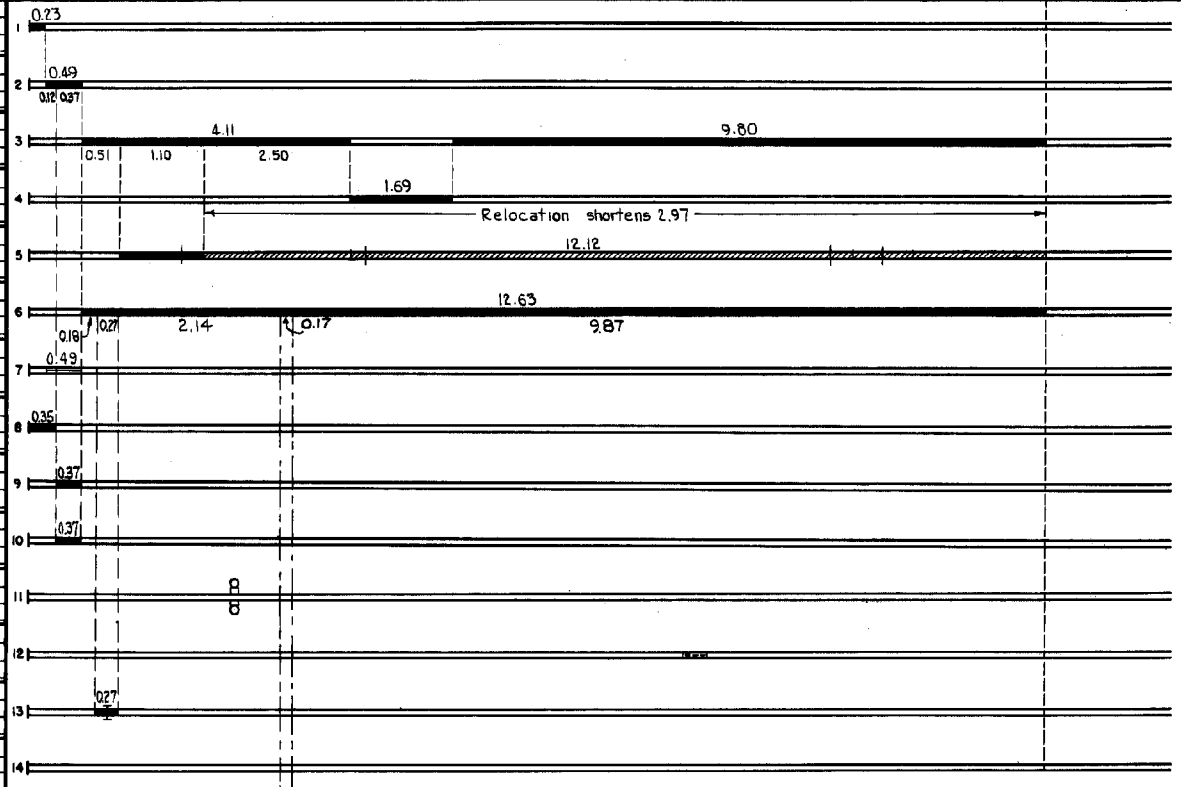
STATE OF MINNESOTA
DEPARTMENT OF HIGHWAYS
ROAD LIFE STUDIES
CONSTRUCTION PROJECT LOG RECORD

CONTROL SECTION 5009
TRUNK HIGHWAY 218
COUNTY Mower
DISTRICT 6B

LIMITS: W. Jct. T.H. 90 - N. Co. Line



YEAR BUILT	PROJECT N°	DESCRIPTION			CODE N°
		TYPE	WIDTH	THICKNESS	
		Brick Pavement	NW		On Concrete Base No Record of Const.
		Block Pavement (Wood & Brick)	NW		On Concrete Base No Record of Const.
		Gravel	22'	2"	No Record of Const.
1919	218-40-1	Gravel	24'	2 1/2"	Co. Job 1902. 1200 C.Y./Mile.
1927	218-40-21-2	Grading Gravel 4 Bridges (1)	40'	30"	1" 600 C.Y./Mile.
1926	218-40-21-2A	Concrete	20'	9" 9"	
M	1944 A.F.E.4	Bit.Seal Coat			MC-3.73A7Gal./Mi. Grav.457C.Y./Mi. Maint.Div.
C	1948 5009-03	Concrete Resurf.	46'	4"	On old Conc. Base
C	1950 5009-04	Plant Mix Bit.	34'	4"	On old Conc. Base
C	1952 5009-06	Plant Mix Bit.	34'	1 1/2" Added	
C	1953 5009-07	Grade King Signals			
M	1953 A.F.E. B24	Remove old Culvert install C.M. Arch Culv. improve Drain. Ditch			65" x 92'
C	1960 5080-31	Grading & Base	52'		
	5080-08	P.C. Concrete Br 9180	52'		14' GS.-O.H.



YEARS FROM	TOTAL TO	UNINCORPORATED		INCORPORATED		RURAL		URBAN	
		RDWY. MI.	BR. MI.	RDWY. MI.	BR. MI.	RDWY. MI.	BR. MI.	RDWY. MI.	BR. MI.
1927	1926	15.37	0.00	0.83	0.00	15.49	0.00	0.83	0.00
1927	1926	13.35	0.00	0.83	0.00	12.52	0.00	0.83	0.00
1947	1948	13.35	0.00	1.21	0.00	12.52	0.00	0.83	0.00
1949	1953	13.35	0.00	1.25	0.00	12.46	0.00	0.87	0.00
1954	1958	13.35	0.00	1.47	0.00	12.46	0.00	1.09	0.00
1959	1959	13.35	0.00	1.72	0.00	12.66	0.00	1.34	0.00
1960	1961	13.35	0.00	1.72	0.00	12.01	0.00	1.31	0.03

REMARKS: Layout is to scale as of 1927

(1) Br. 6301, W108D, Br. 6302, W108D, Br. 6303, W106D & Br. 6304, W104D. (2) Mapleview incorporated 5-21-46.

See Sheet No 2

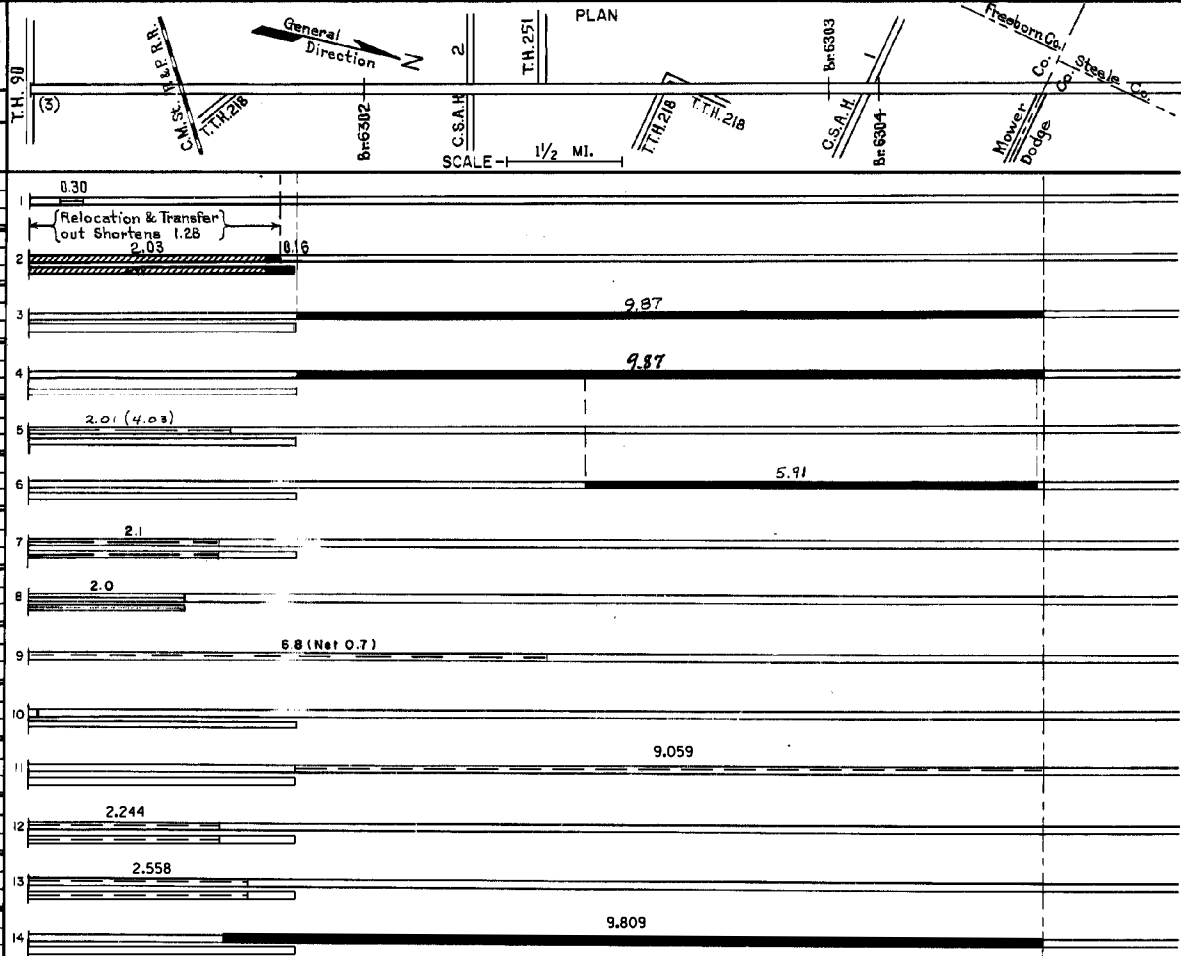
PREPARED BY
TRAFFIC AND PLANNING DIVISION
IN COOPERATION WITH
U.S. DEPARTMENT OF COMMERCE
BUREAU OF PUBLIC ROADS

STATE OF MINNESOTA
DEPARTMENT OF HIGHWAYS
ROAD LIFE STUDIES
CONSTRUCTION PROJECT LOG RECORD

CONTROL SECTION 5009
TRUNK HIGHWAY 218
COUNTY Mower
DISTRICT 6B

LIMITS: W. Jct. T.H. 90 - N. Co. Line
Ref. Pt. 014+00.922 - 027+00.085

YEAR BUILT	PROJECT NO.	DESCRIPTION			
		TYPE	WIDTH	THICKNESS	REMARKS
M 1964	C	Light Bit Seal	34'		RS-2K, 700 Gal. Agg. 26 C.Y.
C 1967	5009-11	Grading Sub-base* Cr. rock Base P.C. Concrete	23' 2 1/4' 2@24'	8"	Divided Highway Const. on N.B. Rdwy. only for 0.16 mi.
C 1968	5009-14	Pl. Mix. Bit Surf. Gravel Shldrs.	20'	2 1/2"	Bit. Mat'l. 1056 Ton 10' Rt. & Lt.
C 1977	5009-18	ASPHALTIC CONG. SURF. Pl. Mix Bit. Shldrs.	24'	1 3/4"	
M 1975	SF	SHOULDER SURFACING Pl. Mix Bit.	2'	1"	AC-1233I WEAR. 280 Ton CS-1H TACK. 350 Gal.
M 1976	SF	WIDEN ROADWAY Bit. WEARING COURSE	2'	6 1/2"	AC-1233I WEAR. 956 Ton MC 250 TACK. 20 GAL.
M 1980	SF	Clean, Saw & Reseal Joints in Concrete Pavement			
M 1980	SF	Remove, Cut & Pour Rubber Material on Transverse Joints NB & SB Lanes	2@24'	1/4"	
M 1981	SF	Spot Bit. Shldr. Overlay	8'-10'	Var.	166 Ton 250 Gal. CS8H Tack Pl. Mix 2331 Fines
M 1984	SF	Mudlock at Br. 50803 SB at M.P. 15+00.012-N. Abut.			4 Yds. Lima 16 Bags Cement
M 1985	SF	Spot Overlay	8'	1 1/2"	Spec. 2331 Shoulders
M 1987	SF	Wedge Paving			
M 1988	SF	Fog Seal			
C 1989	5009-24	Grading Bit. Overlay	26'	1 1/2" 3"	Spec. 2331 Spec. 2341



YEARS FROM	YEARS TO	TOTAL MILES	UNINCORPORATED		INCORPORATED		RURAL		URBAN	
			RDWY. MI.	BR. MI.	RDWY. MI.	BR. MI.	RDWY. MI.	BR. MI.	RDWY. MI.	BR. MI.
1962	1962	13.35	11.55	0.00	1.77	0.03	11.93	0.00	1.39	0.03
1963	1963	13.35	11.51	0.00	1.81	0.03	11.93	0.00	1.39	0.03
1967		12.07	0.00	0.00	0.00	0.00	12.07	0.00	0.00	0.00

REMARKS: Layout is to scale as of 1927.
(3) See C.S. 5080 for bridges at Jct. T.H. 90.

