

PREPARED BY  
HIGHWAY PLANNING SURVEY  
IN COOPERATION WITH  
U.S. PUBLIC ROADS ADMINISTRATION

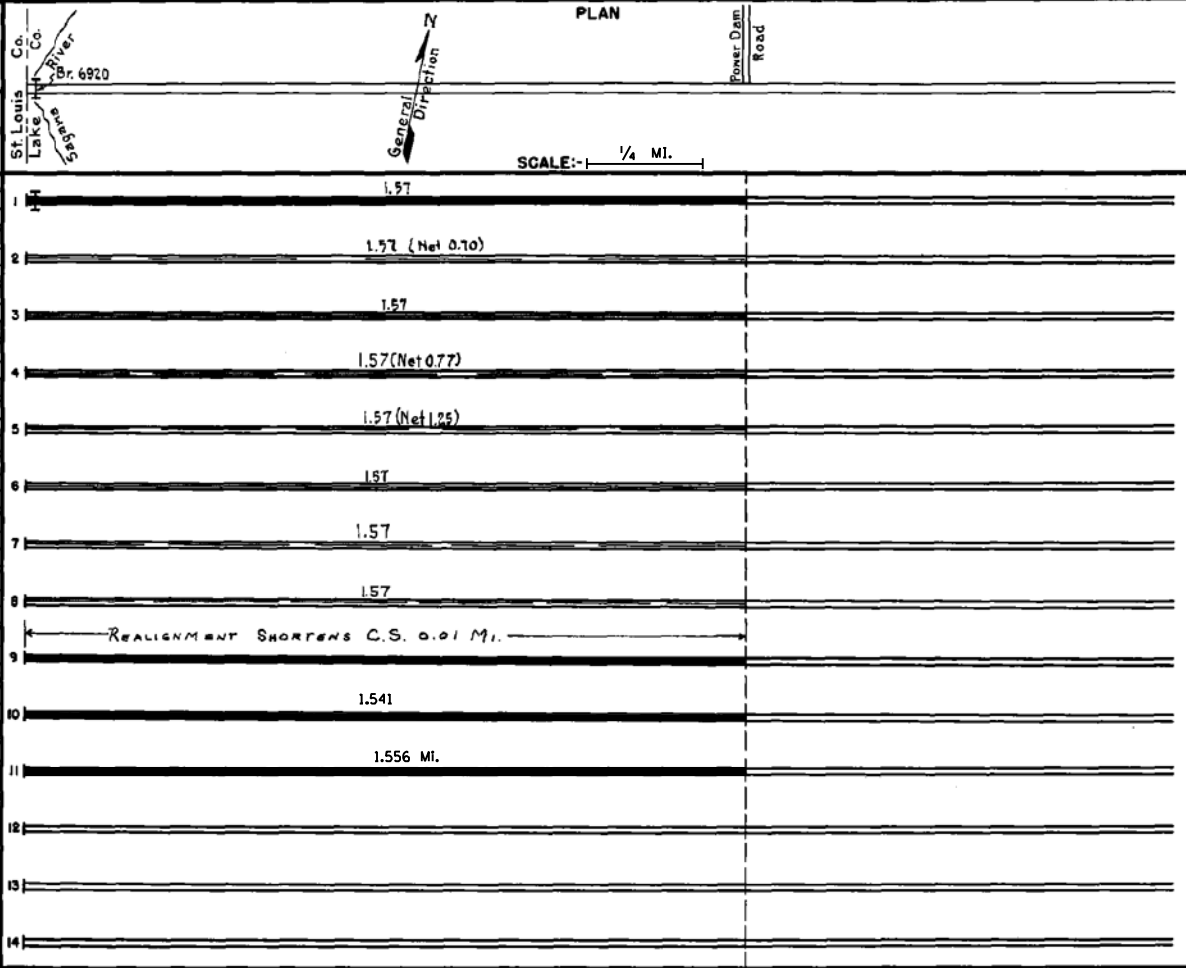
STATE OF MINNESOTA  
DEPARTMENT OF HIGHWAYS  
ROAD LIFE STUDIES  
CONSTRUCTION PROJECT LOG RECORD

CONTROL SECTION 3809  
TRUNK HIGHWAY 169  
COUNTY LAKE  
DISTRICT 18

LIMITS: W. Co. Line - Jct. Power Dam Road

Ref. Pt. 415+00.333 - 416+00.889

YEAR BUILT	PROJECT N°	DESCRIPTION			CODE N°
		TYPE	WIDTH	THICKNESS	
		Mixed Bit. Bridge # 6920	18' 15'		
M 1970	A.F.E. 4	Spot Treat. Bit. Surface Repair	18'		
M 1951	A.F.E. 4	Bit. Surf. Repair	18'		
M 1954	A.F.E. 821 A.F.E. 604	Spot Base & Subgr. Corr. Spot Treat. Bit. Surf. Repair	Var. 20'		
M 1956	A.F.E. 604	Spot Treat. Bit. Surf. Repair	18'		
M 1959	A.F.E. 605	Light Bit. Seal	19'		
M 1964	S.F.	Spot Treat. Bit. Surf. Repair	Var.		
M 1967	S.F.	Bit. Surf. Repair	Var.		
C 1977	3809-06 RS 4/32 (2)	Grading & Base Pl. Mix Bit. Surface GRAVEL SUBLAS	24' 8'	3" 3"	
C 1992	3809-07	Grading Bit. Surfacing	24'	3'	
S 2004	8821-108 (6903-13)	Mill & Bit. Overlay	24'	2'	



YEARS		TOTAL MILES	UNINCORPORATED		INCORPORATED		RURAL		URBAN	
FROM	TO		RDWY. MI.	BR. MI.	RDWY. MI.	BR. MI.	RDWY. MI.	BR. MI.	RDWY. MI.	BR. MI.
1949		1.57	1.55	0.02	0.00	0.00	1.55	0.02	0.00	0.00

REMARKS: Layout is to scale as of 1949