

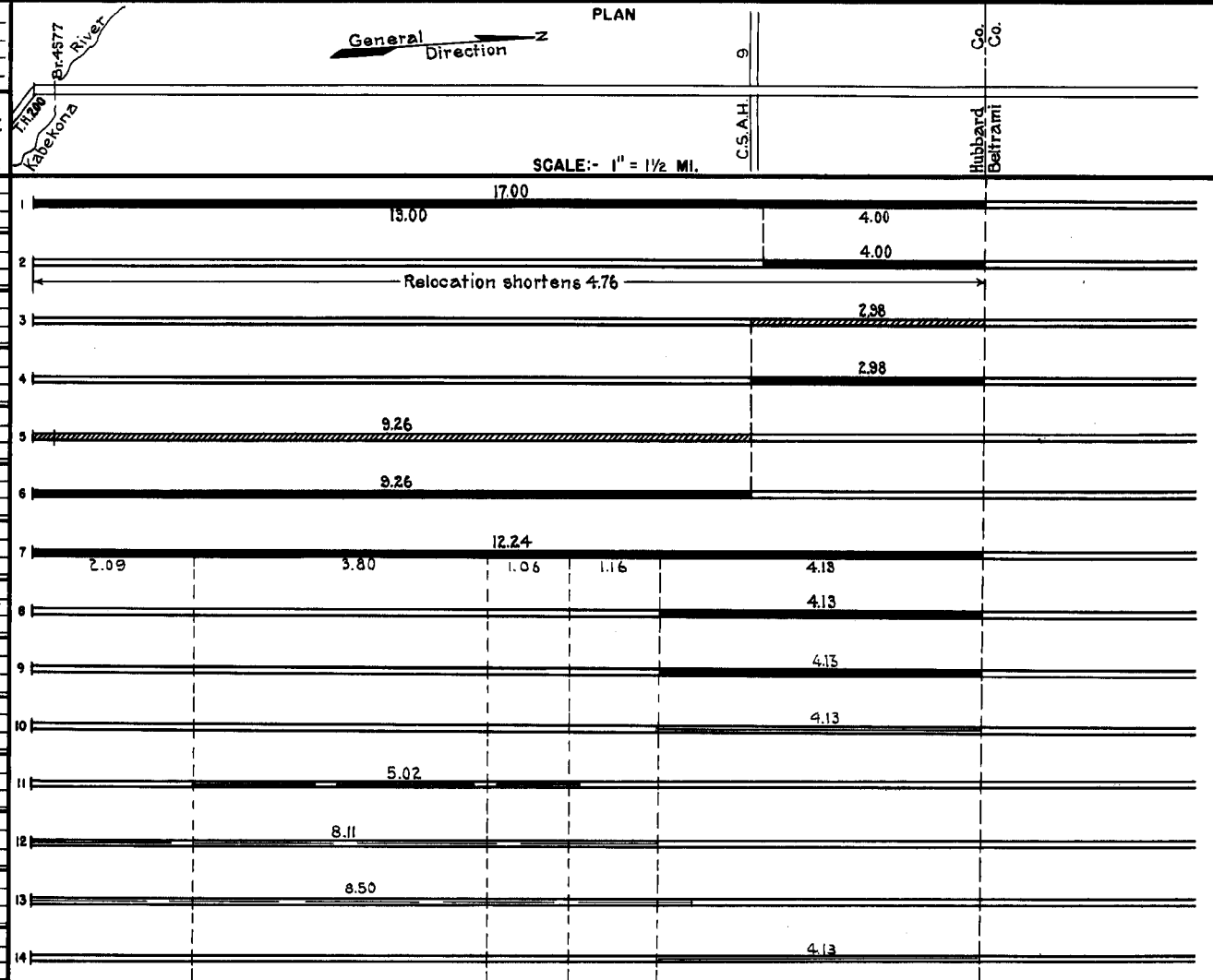
PREPARED BY
HIGHWAY PLANNING SURVEY
IN COOPERATION WITH
U.S. PUBLIC ROADS ADMINISTRATION

STATE OF MINNESOTA
DEPARTMENT OF HIGHWAYS
ROAD LIFE STUDIES
CONSTRUCTION PROJECT LOG RECORD

CONTROL SECTION 2907
TRUNK HIGHWAY 71
COUNTY Hubbard
DISTRICT 2A

LIMITS E. Jct. T.H. 200 - N. Co. Line

YEAR BUILT	PROJECT N ^o	DESCRIPTION			CODE N ^o DIST.
		TYPE	WIDTH	THICKNESS	
		Earth	24'		No Record of Constr.
1921		Gravel	24'	2"	Maint. Dept.
1924	71-4-24-1B	Grading	32'		Not in service until 1929.
1925	71-4-24-1B	Gravel	24'	3 1/4"	1500 C.Y./Mile. Not in service until 1929.
1927	71-4-24-2	Grading Br. 4577	32'		Not in service until 1929. W108D.
1929	71-4-24-2	Gravel	24'	3 1/4"	1500 C.Y./Mile.
1930	71-4-24-2 (I) 71-4-24-1B (I)	Oil Tr. Gravel	24'	1 1/2"	11880 Gal./Mile. Maint. Dept.
1935	71-4-24-2A 71-4-24-1B	Gravel Sand Lift	24'	3 3/4" 10"	1700 C.Y./Mile. Stab. with Clay. / 835
1937	71-4-24-2A(I) 71-4-24-2B(II)	C.B. Asph. Plant Mix Road Mix Level Course	24'	1 1/2" 1"	236
M	1940	A.F.E. 7			Fm. I, 3823 Gal./Mi. Bit. Seal Coat
M	1941	A.F.E. 6			SC3, 5781 Gal./Mi. Grav. 659 C.Y./Mi. Bit. Surf. Repair
M	1944	A.F.E. 5			RC3, 1203 Gal./Mi. Grav. 18 C.Y./Mi. (spots) Bit. Surf. Repair
M	1945	A.F.E. 4			RT-5, 1335 Gal./Mi. Grav. 74 C.Y./Mi. Bit. Surf. Repair
M	1946	A.F.E. 5			AE1, 16743 Gal. Agg. 471 C.Y. Bit. Seal Coat



YEARS FROM	TO	TOTAL MILES	UNINCORPORATED		INCORPORATED		RURAL		URBAN	
			RDWY. MI.	BR. MI.	RDWY. MI.	BR. MI.	RDWY. MI.	BR. MI.	RDWY. MI.	BR. MI.
1921	1928	17.00	17.00	0.00	0.00	0.00	17.00	0.00	0.00	0.00
1929	1960	12.24	12.24	0.00	0.00	0.00	12.24	0.00	0.00	0.00
1961		12.20	12.20	0.00	0.00	0.00	12.20	0.00	0.00	0.00

REMARKS: Layout is to scale as of 1929

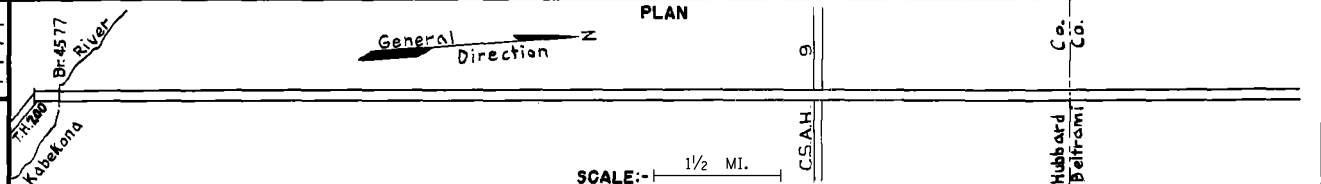
(I) This work not done under these project numbers but lies within the limits of these projects

PREPARED BY
HIGHWAY PLANNING SURVEY
IN COOPERATION WITH
U. S. PUBLIC ROADS ADMINISTRATION

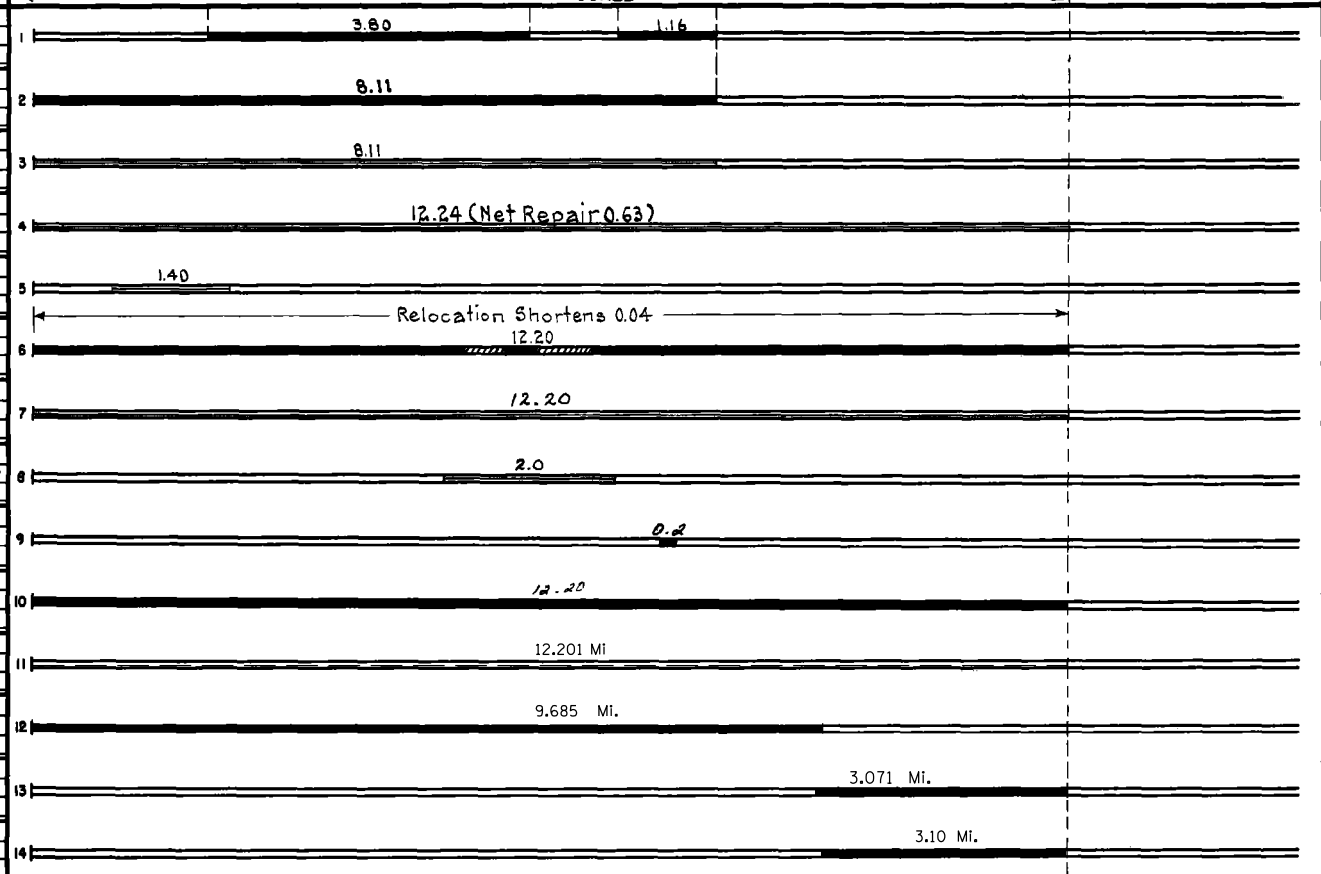
STATE OF MINNESOTA
DEPARTMENT OF HIGHWAYS
ROAD LIFE STUDIES
CONSTRUCTION PROJECT LOG RECORD

CONTROL SECTION 2907
TRUNK HIGHWAY 71
COUNTY Hubbard
DISTRICT 2A

LIMITS: E. Jct. T.H. 100 - N. Co. Line
Ref. Pt. 294+00.185 - 306+00.865



YEAR BUILT	PROJECT N°	DESCRIPTION			CODE N°
		TYPE	WIDTH	THICKNESS	
C	1946 A.F.E. 19	Gravel Lift Bit. Surf. Treated (Mixed Prime)	27'	6"-12"	SCI 2, 79343 Gal.
C	1947 A.F.E. 19	Bit. Surfacing Mixed Bit.	24'	1 1/4"	MC-3, 77601 Gal. Agg. 6097 Tons
M	1950 A.F.E. 4	Bit. Fog Seal	24'		RCS-1, 10801 Gal. Agg. 352 C.Y.
M	1953 A.F.E. 604	Spot Treat Bit. Surf. Repair	24'		MC-3, RCS-2, 25036 Gal. Agg. 532 Tons
M	1957 A.F.E. 604	Light Bit. Seal	24'		
M	1957 A.F.E. 604	Bit. Surf. Repair	22'		MC-2, 10969 Gal. Agg. 840 Tons
C	1961 2907-03	Grading Sub-base & Base Plant Mix Bit. (Base)	40'	4 1/2" 26' 1 1/2"	460
M	1968 SF	LIGHT BIT. SEAL			RC-250 SEAL 23280 GAL. Agg. 830 C.Y.
M	1978	SHOULDER REPAIR			CL-5 Agg. 1911 Ton
M	1980	Bit. Surfacing		1 1/2"	228.8 Tons Agg. 2280
C	1981 2907-07	Bit. Surf. Bit. Shldr.	24'	1 1/2" 1' 1 1/2"	1421
M	1995 M95326	Aggregate Seal			Fine Agg. 3
S	2005 S05042	Bit. Mill & Overlay, Cold Recycle Turn & Culvert Replacement	24'	2" 4'	Spec. 2360 Reclaim
S	2006 S06059	Bit. Overlay	24'	1"	Spec. 2360
S	2011 2907-09	Bit. Reclamation Bit. Surfacing	var	7' var	



YEARS FROM	TOTAL MILES TO	UNINCORPORATED		INCORPORATED		RURAL		URBAN	
		RDWY. MI.	BR. MI.	RDWY. MI.	BR. MI.	RDWY. MI.	BR. MI.	RDWY. MI.	BR. MI.

REMARKS: See Sheet No. 1.

