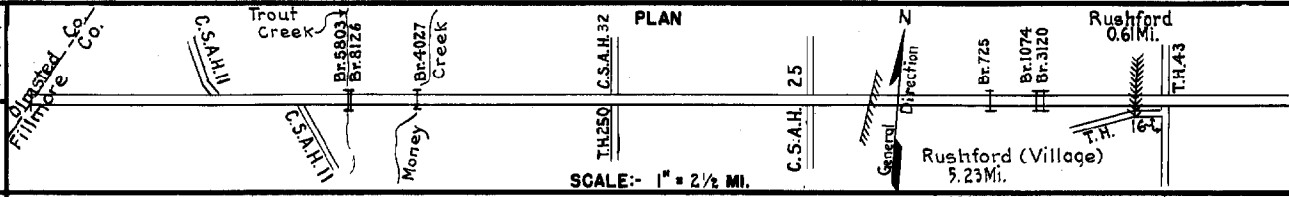


PREPARED BY
HIGHWAY PLANNING SURVEY
IN COOPERATION WITH
U.S. PUBLIC ROADS ADMINISTRATION

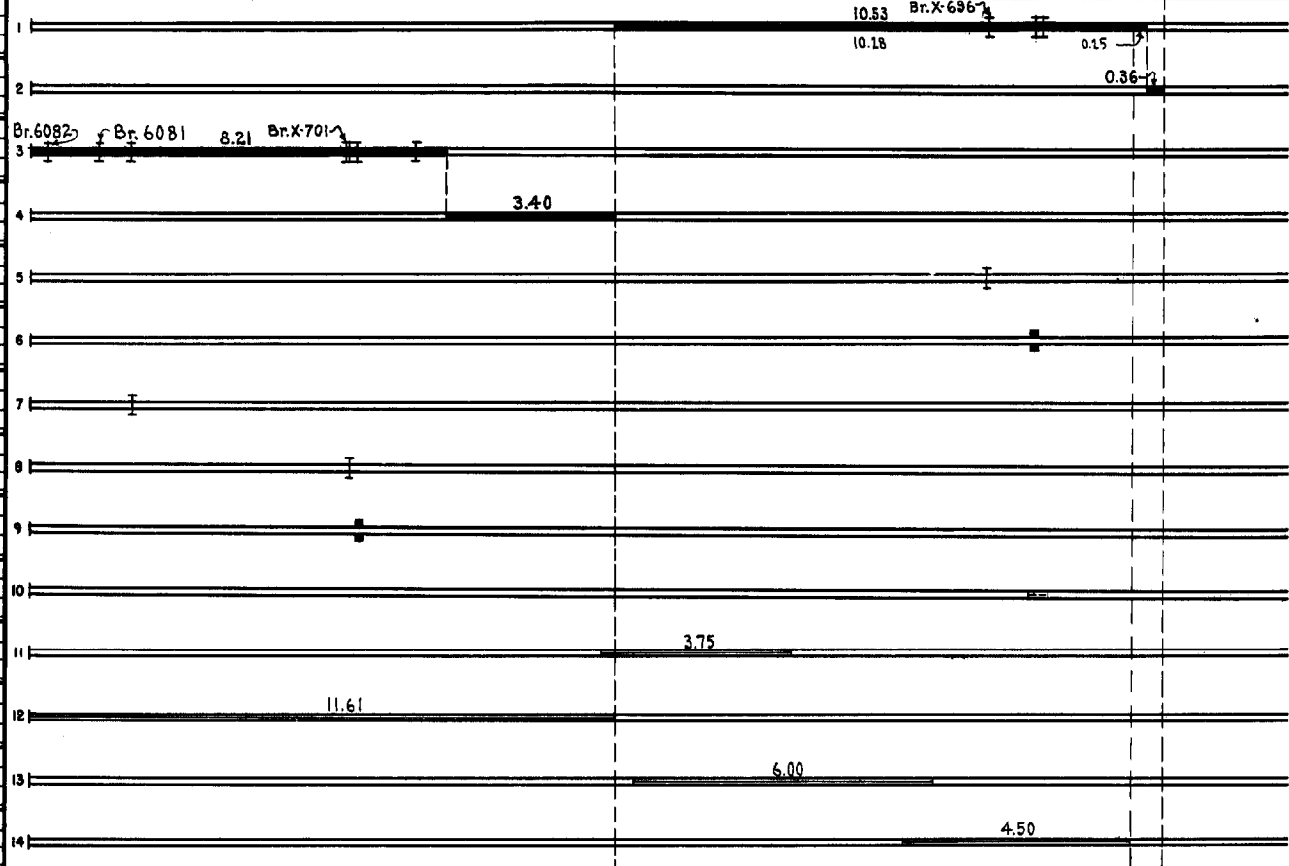
STATE OF MINNESOTA
DEPARTMENT OF HIGHWAYS
ROAD LIFE STUDIES
CONSTRUCTION PROJECT LOG RECORD

CONTROL SECTION 2305
TRUNK HIGHWAY 30
COUNTY Fillmore
DISTRICT 6A

LIMITS: N.Co.Line - Jct.T.H.43 in Rushford



YEAR BUILT	PROJECT N ^o	DESCRIPTION			CODE N ^o
		TYPE	WIDTH	THICKNESS	
		Gravel	26'	1"	No Record of Constr. Added in 1934.
		Br.X-696, 1074 & 3120	152'		7 B.S., 20' B.S. & 14' C.S.
		Oil Tr. Gravel			No Record of Constr. Added in 1934.
1926		Gravel	26'	2"	Part Gravelled as Co. Job 2602. Added in 1934.
		7 Bridges (I)	1623'		
1926		Gravel	24'	2 1/4"	Co. Job 2602. 1200 C.Y./Mile. Added in 1934.
1934		Br. 725	23'		20' B.S. Maint. Dept.
1934		Br. 1074	24'		Br. Widening. 20' B.S. Maint. Dept.
1937		Br. 539	23'		Br. Reconstruction 23' B.S. Maint. Dept.
1938		Br. 5803	27'		90' B.S. Maint. Dept.
1939		Br. 8125	28'		Br. Widening 5' B.S. Maint. Dept.
C	1940 2305-01	Channel Change			
M	1940 A.F.E. 36	Crushed Rock			327 C.Y./Mi. Maint. Dept.
M	1941 A.F.E. 36	Crushed Rock	28'		1015 C.Y./Mi. Maint. Dept.
M	1943 A.F.E. 6	Crushed Rock Resurfacing			612 C.Y./Mi. Maint. Div.
M	1945 A.F.E. 6	Crushed Rock Resurfacing			797 C.Y./Mi. Maint. Div.



YEARS FROM TO	TOTAL MILES	UNINCORPORATED		INCORPORATED		RURAL		URBAN	
		RDWY. MI.	BR. MI.	RDWY. MI.	BR. MI.	RDWY. MI.	BR. MI.	RDWY. MI.	BR. MI.
1934 1937	22.50	21.84	0.05	0.61	0.00	21.84	0.05	0.61	0.00
1938 1950	22.50	21.83	0.06	0.61	0.00	21.83	0.06	0.61	0.00
1921 1954	22.50	16.61	0.05	5.83	0.01	21.83	0.06	0.61	0.00
1955	20.33	14.46	0.03	5.83	0.01	19.68	0.04	0.61	0.00

REMARKS: Layout is to scale as of 1934
(I) Br. 6082, 23' B.S., Br. 6081, 30' B.S., Br. 539, 23' B.S., Br. X-701, 79' L.T. & B.S. Approx Br. 8126, 10' B.S., Br. 8125, 5' B.S. & Br. 4027, 40' B.S.

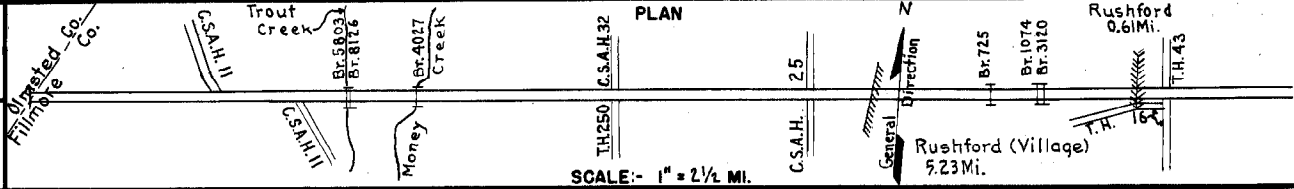
4-75

PREPARED BY
HIGHWAY PLANNING SURVEY
IN COOPERATION WITH
U.S. PUBLIC ROADS ADMINISTRATION

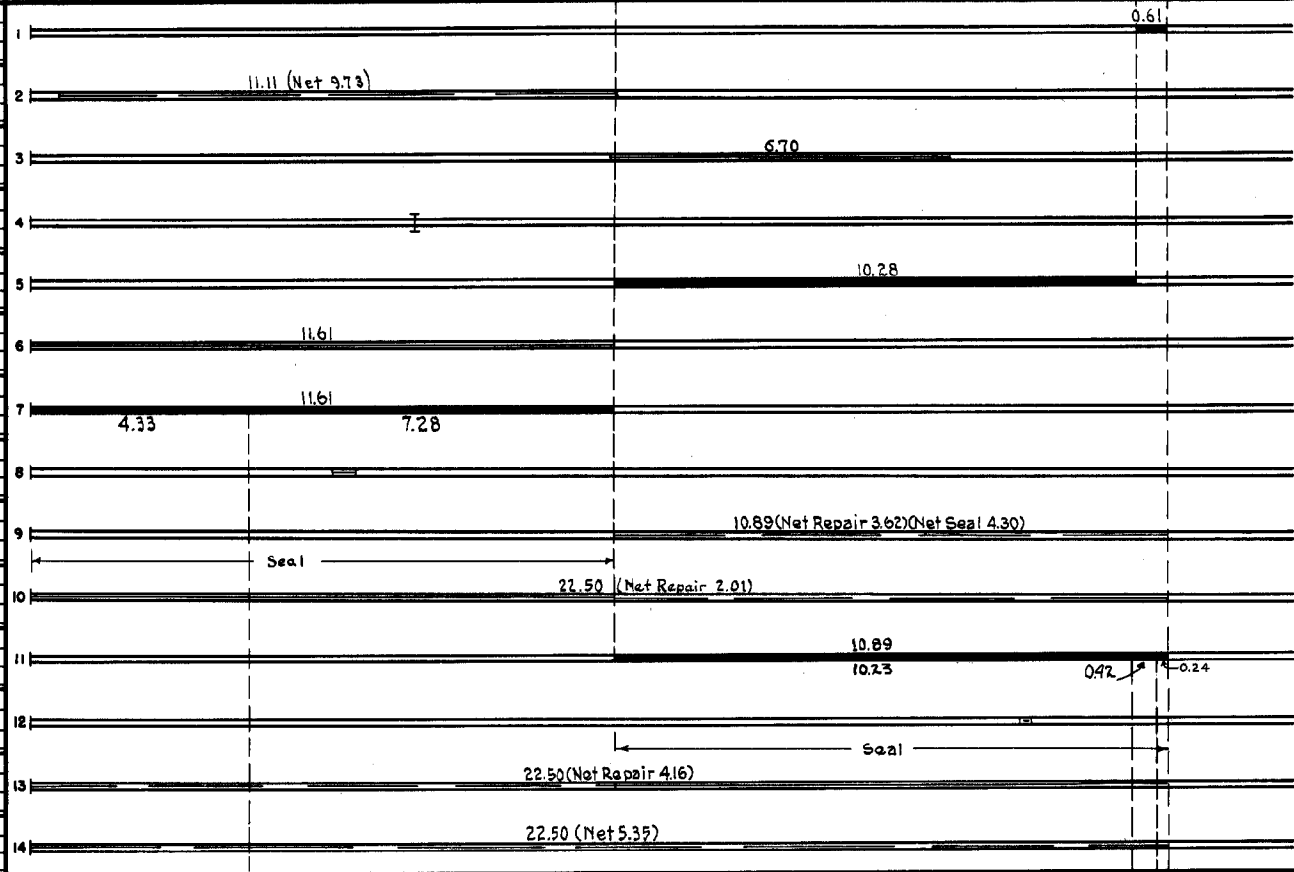
STATE OF MINNESOTA
DEPARTMENT OF HIGHWAYS
ROAD LIFE STUDIES
CONSTRUCTION PROJECT LOG RECORD

CONTROL SECTION 2305
TRUNK HIGHWAY 30
COUNTY Fillmore
DISTRICT 6A

LIMITS: N. Co. Line - Jct. T.H. 43 in Rushford



YEAR BUILT	PROJECT N°	DESCRIPTION			CODE N°
		TYPE	WIDTH	THICKNESS	
1946	A.F.E. 16	Bit. Surfacing (0.25 mi) Bit. Resurf. (0.36 mi) Mixed Bit.	24'	1" 1" added	MC-3, 8168 Gal. Agg. 372 C.Y.
1946	A.F.E. 6	Crushed Rock Resurfacing (Spots)			4961 C.Y.
1947	A.F.E. 6	Traffic Bound Crushed Rock Resurfacing			5650 Tons
1948	2305-02 A.F.E. 38(1)	Br. 4027	23'		50' L.T.
1948	A.F.E. 2b	Bit. Surfacing Bit. Surf. Treated	24'	3/4"	MC3&5C3 103442 Gal. Agg. 5769 Tons
1948	A.F.E. 6	Crushed Rock Resurfacing			6510 Tons
1949	A.F.E. 17	Bit. Surfacing Mixed Bit.	24'	1"	MC-0&5C4, 115101 Gal. Agg. 8126 Tons
1949	A.F.E. 57	Erosion Control			
1949	A.F.E. 4	Spot Treat. Bit. Surf. Repair Spot Fog Seal	24' 18'		MC3, 56384, 26354 Gal. Agg. 1192 C.Y.
1950	A.F.E. 4	Spot Treat. Bit. Surf. Repair Light Seal Coat (1.61 mi)	24' 24'		RCS-1 & MC3, 26529 Gal. Agg. 942 C.Y.
1950	A.F.E. 26	Bit. Resurfacing Mixed Bit.	24' (2) added	1"	MC-3, 91330 Gal. Agg. 7102 Tons
1951	A.F.E. 63	Channel Change			
1951	A.F.E. 4	Spot Treat. Bit. Surf. Repair Light Seal Coat (0.89 mi)	24' 24'		RCS-1 & MC3, 47897 Gal. Agg. 1999 C.Y.
1952	A.F.E. 4	Spot Treat. Bit. Surf. Repair	24'		MC-3, 36867 Gal. Agg. 1925 C.Y.



YEARS FROM	TOTAL MILES TO	UNINCORPORATED		INCORPORATED		RURAL		URBAN	
		RDWY. MI.	BR. MI.	RDWY. MI.	BR. MI.	RDWY. MI.	BR. MI.	RDWY. MI.	BR. MI.

REMARKS: See Sheet No. 1
(1) A.F.E. 38 covers construction & Cr. Rock Surfacing of approaches to Br. 4027
(2) Only center 24' of widened section resurfaced.

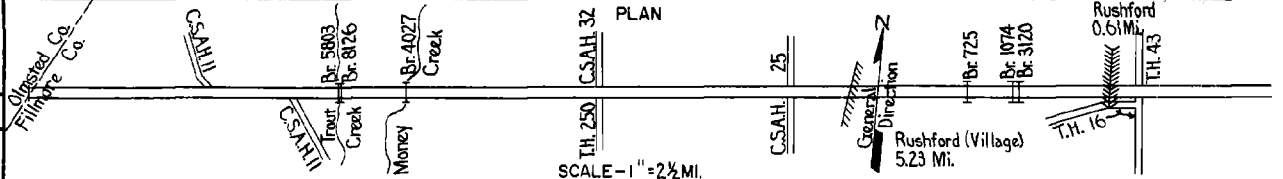
4-75

PREPARED BY
TRAFFIC AND PLANNING DIVISION
IN COOPERATION WITH
U.S. DEPARTMENT OF COMMERCE
BUREAU OF PUBLIC ROADS

STATE OF MINNESOTA
DEPARTMENT OF HIGHWAYS
ROAD LIFE STUDIES
CONSTRUCTION PROJECT LOG RECORD

CONTROL SECTION 2305
TRUNK HIGHWAY 30
COUNTY Fillmore
DISTRICT 6A

LIMITS: N. Co. Line - Jct. T.H. 43 in Rushford



YEAR BUILT	PROJECT NO.	DESCRIPTION				REMARKS
		TYPE	WIDTH	THICKNESS		
M 1962		Spot Treat Bit. Surf. Repair	24'		Bit. Mix 342 Tons Tack MC-2, 1288 Gal.	
M 1963		Spot Treat Bit. Surf. Repair Light Bit. Seal	24' 24' 25'		Bit. Mix 2598 Tons MC-2, Tack 2984 Gal. RC-2, 35564 Gal.	
M 1964	C	Spot Treat Bit. Surf. Repair	24'		Bit. Mix 2123 Tons Tack 1568 Gal.	
M 1965	SF	Spot Light Bit. Seal	24'		Seal Bit. 25993 Gal.	
	C & SF	Spot Treat Bit. Surf. Repair	24'		Seal Agg. 986 C.Y. Rd. MIX 1507 Tons	
M 1966	SF	Bit. Surface Repair	24'	1 1/2"	MC-250 Prime 1284 Gal. Bit. Mat'l 1833 Gal.	
M 1967	SF	Light Reshaping Grade Lifts Bit. Seal Coat	Var.		(SF) CRS-2, 7904 Gal. Agg. 216 C.Y. (C) CRS-2	
	C	Bit. Spot Treat	24'	3/4"	9308 Gal. Agg. 358 C.Y.	
M 1968	SF	Spot Bit. Surf. Repair	24'	3/4"	MC-250, 7267 Gal. Agg. 366 Ton	
C 1969	2305-11	Grade, Base Pl. Mix. Bit. Surf. Gravel Shldr. C & G	24'-40'	2"		
M 1969	SF	Spot Bit. Repair	24'	1/2"	MC-250 Tack 900 Gal. Agg. 366 Tons	
M 1970	SF	Spot Bit. Repair	24'		Tack 2783 Gal. Agg. 1392 Tons	
M 1972	SF	Spot Bit. Repair	22'	1/2"	RC-800 17898 Gal. Agg. 12,152 Tons	
M 1972	SF	Spot Bit. Repair	22'	1/2"	4345 Gal. Agg. 245 Tons	
M 1973	SF	Spot Bit. Repair	22'	1/2"	1399 Tons	
M 1973	SF	Bit Seal Coat	22'		676 Tons	

1	20.33 (Net 2.17)
2	18.58 (Net 4.90) (Net Seal 12.60)
3	20.33 (Net 4.04)
4	20.33 (Net 2.87) (Net Seal 15.35)
5	20.33 (Net 2.88)
6	20.33 (Net Light Seal 3.67) (Net Heavy Seal 2.10) (Net repair 0.70) (Net reshaping 0.20)
7	944 (Net Repair 0.81)
8	
9	19.70 (Net Repair 2.34)
10	18.00 (Net Repair 4.0)
11	20.33 (Net Repair 15.40)
12	12.56 (Net Repair 3.02)
13	1.61 (Net Repair 5.5)
14	145 (Net Repair 4.95)

YEARS		TOTAL MILES	UNINCORPORATED		INCORPORATED		RURAL		URBAN	
FROM	TO		RDWY. MI.	BR. MI.	RDWY. MI.	BR. MI.	RDWY. MI.	BR. MI.	RDWY. MI.	BR. MI.

REMARKS: See Sheet No. 1

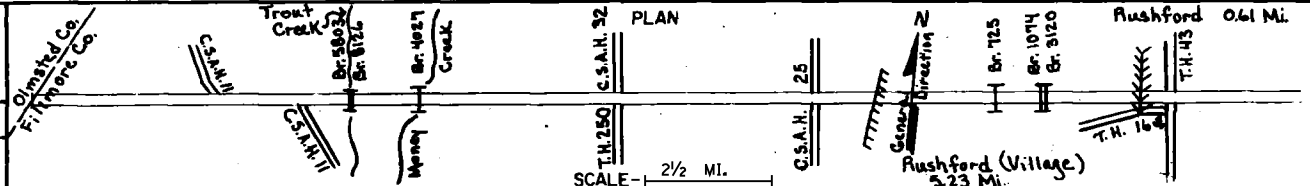
4.74

PREPARED BY
 TRANSPORTATION PLANNING AND PROGRAMMING DIVISION
 IN COOPERATION WITH
 U.S. DEPARTMENT OF TRANSPORTATION - FEDERAL HIGHWAY ADMINISTRATION

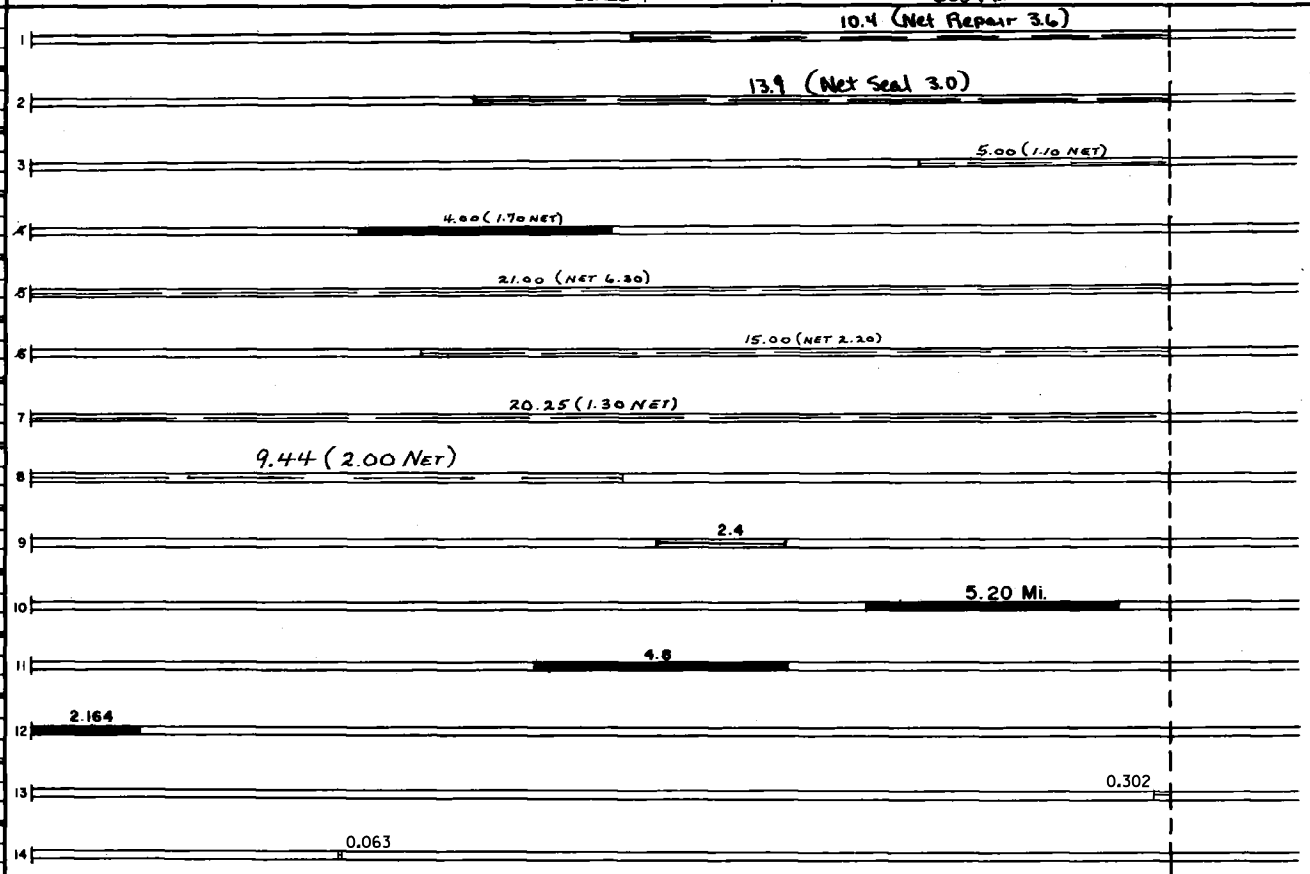
STATE OF MINNESOTA
 DEPARTMENT OF HIGHWAYS
 ROAD LIFE STUDIES
 CONSTRUCTION PROJECT LOG RECORD

CONTROL SECTION 2305
 TRUNK HIGHWAY 30
 COUNTY Fillmore
 DISTRICT 6A

LIMITS: N. Co. Line - Jct 43 in Rushford
 Ref. Pt. 244+00.965 - 265+00.503



YEAR BUILT	PROJECT NO	DESCRIPTION			
		TYPE	WIDTH	THICKNESS	REMARKS
M 1974	SF	Bit. Surface Repair	24'	1"	1,748 Tons
M 1974	SF	Seal Coat	24'		405 Tons
M 1975	SF	RANDOM BIT OVERLAY	24'	1"	AC 2341 Bit.
M 1976	SF	RANDOM BIT OVERLAY	22'	3/4"	AC 2341 184 Ton RC 900 Tack
M 1976	SF	RANDOM SEAL COAT	22'		CRS-1 10536 Ton SAND 550 Cu. Yd.
M 1977	SF	BIT. SURFACE REPAIR	24'	1"	AC-1 Pl. Mix 1575 Ton RC 900 Tack
M 1978	SF	Bit. Spot Overlay	20'	1"	Pl. Mix AC 2341 936.9 Ton
M 1979	SF	Bit. Overlay - Random	24'	1 1/2"	Pl. Mix 2132 Ton Tack 200 GAL
M 1980	SF	Bit. Overlay	24'	1 1/4"	2390.67 Ton Tack .03
M 1982	SF	Bituminous Surfacing Ago. Shoulders	24' Var.	2 1/2" Var.	Contract No. 3929
M 1983	SF	Bit. Surfacing	22'	1 1/2"	Contract # 4010
M 1983	SF	Bit. Surfacing	24'	2 1/2"	Contract # 3972
M 1984	SF	Spot Overlay		1"	Spec. 2341
C 1991	2305-15	Gravel Shoulders	6'	4"	



YEARS		TOTAL MILES	UNINCORPORATED		INCORPORATED		RURAL		URBAN	
FROM	TO		RDWY. MI.	BR. MI.	RDWY. MI.	BR. MI.	RDWY. MI.	BR. MI.	RDWY. MI.	BR. MI.

REMARKS: See Sheet No. 1

