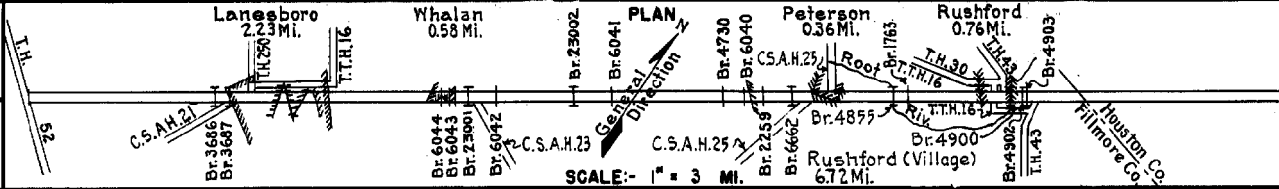


PREPARED BY
HIGHWAY PLANNING SURVEY
IN COOPERATION WITH
U.S. PUBLIC ROADS ADMINISTRATION

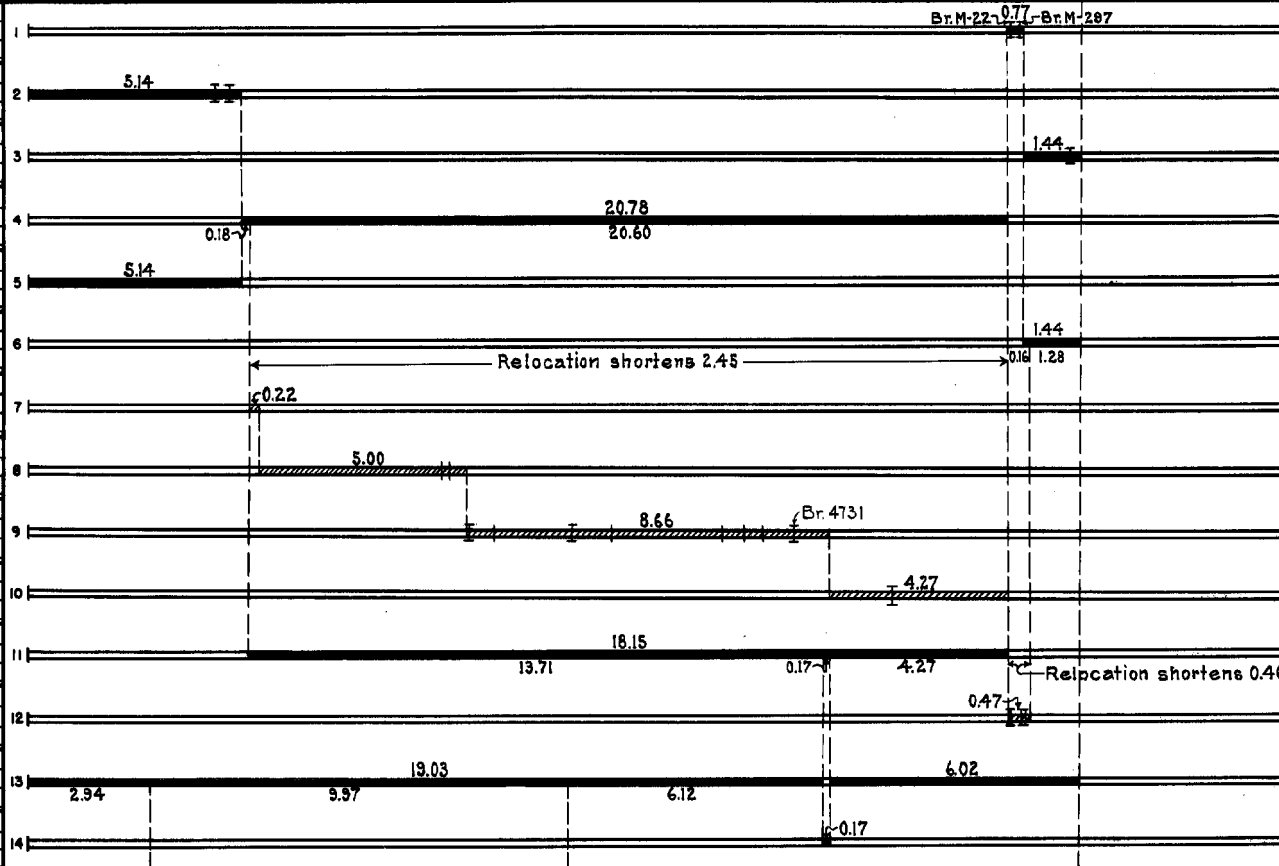
STATE OF MINNESOTA
DEPARTMENT OF HIGHWAYS
ROAD LIFE STUDIES
CONSTRUCTION PROJECT LOG RECORD

CONTROL SECTION 2304
TRUNK HIGHWAY 16
COUNTY Fillmore
DISTRICT 6A

LIMITS: E. Jct. T.H. 52 E. of Preston - E. Co. Line



YEAR BUILT	PROJECT N°	DESCRIPTION				CODE N°
		TYPE	WIDTH	THICKNESS	REMARKS	
		Concrete	16'	7 1/2"	No Record of Constr.	
		Br. M-22	16'		200' H.T.	
		Br. M-297	18'		53' L.T.	
1922	16-9-25	Grading	30'			
		Br. 3686	20'		50' C.D.G.	
		Br. 3687	20'		30' C.D.G.	
1923	16-9-29A	Grading	32'			
		Br. 3827	21'		30' B.S.	
1924		Grading (1)	24'			
		Gravel	24'	2"	Maint. Dept.	
1924	16-9-25	Gravel	24'	2 1/2"	1200 C.Y./Mile.	
1925	16-9-29A	Gravel	26'	1 3/4"	900 C.Y./Mile.	
		Earth			No Record of Constr.	
					Not used until 1929.	
1927	16-9-21-1	Grading	32'		Not used until 1929.	
		Br. 6044 & 6043			W106D & W108D.	
1928	16-9-21-2	Grading	32'		Not used until 1929.	
		8 Bridges (2)	23'			
1929	16-9-21-3	Grading	32'			
		Br. 4855	23'		640' H.T.	
1929	16-9-21-1,2 & 3	Gravel	26'	1 1/2"	700-1100 C.Y./Mile.	
		Grading	32'			
1930	16-9-21-4	Br. 4900, 4902 & 4903	23'		1-480' H.T., 1-255' L.T.	
			30'		1-60' L.T.	
	16-9-25 (3)					
1930	16-9-21-1,2 & 3 (3)	Oil Tr. Gravel	24'	1 1/2"	12044-15065 Gal./Mile	
	16-9-29A (3)				Maint. Dept.	
1932	16-9-21-2 (3)	Oil Tr. Gravel	24'	1 1/2"	12865 Gal./Mile	
					Maint. Dept.	



YEARS		TOTAL MILES	UNINCORPORATED		INCORPORATED		RURAL		URBAN	
FROM	TO		RDWY. MI.	BR. MI.	RDWY. MI.	BR. MI.	RDWY. MI.	BR. MI.	RDWY. MI.	BR. MI.
1923	1928	28.18	24.97	0.03	3.05	0.04	24.97	0.03	3.05	0.04
1929	1929	25.68	21.04	0.19	4.41	0.04	22.05	0.19	3.40	0.04
1930	1930	25.32	21.03	0.24	3.85	0.10	21.57	0.24	2.91	0.10
1931	1934	25.22	14.41	0.04	10.47	0.30	21.97	0.24	2.91	0.10
1935	1934	25.12	14.41	0.04	10.38	0.29	21.86	0.23	2.91	0.10
1965	1913	25.09	14.36	0.04	10.38	0.29	21.85	0.23	2.91	0.10
1914		25.10	14.41	0.04	10.36	0.29	21.88	0.23	2.89	0.10

REMARKS: Layout is to scale as of 1930.

(1) No record of construction of grading.

(2) Br. 4728, 120' H.T., Br. 6042, W104D, Br. 4729, 50' L.T., Br. 6041, 6040 & 2259 W106D; Br. 4730, W108T, & Br. 4731, 50' L.T.

(3) This work not done under these project numbers but lies within the limits of these projects.

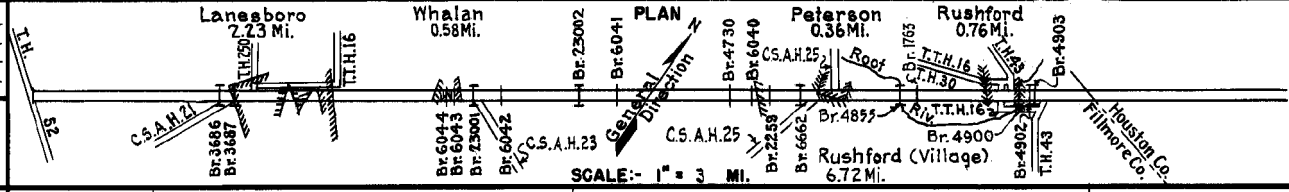
(4) W106x37 added to W106x37 in place, making W106D x 37.

PREPARED BY
HIGHWAY PLANNING SURVEY
IN COOPERATION WITH
U. S. PUBLIC ROADS ADMINISTRATION

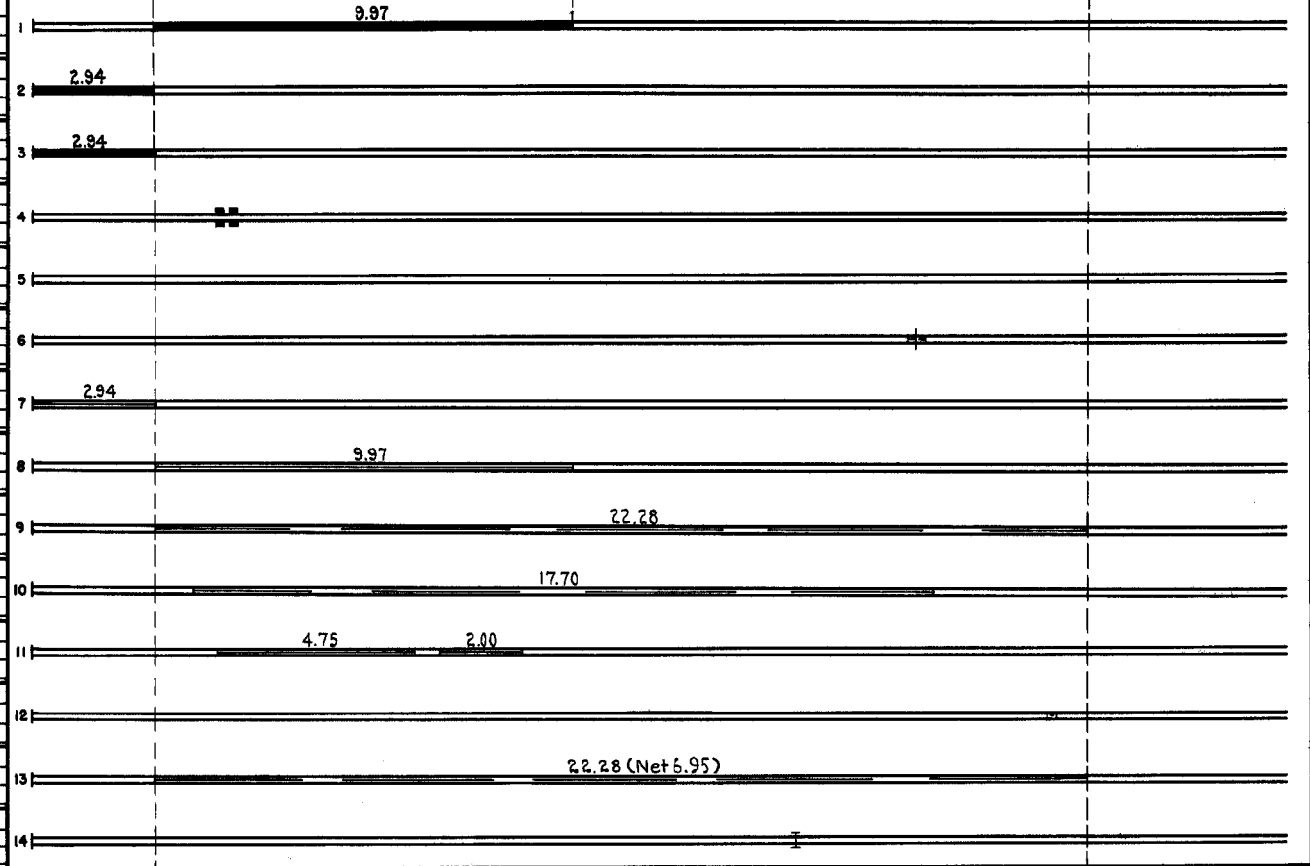
STATE OF MINNESOTA
DEPARTMENT OF HIGHWAYS
ROAD LIFE STUDIES
CONSTRUCTION PROJECT LOG RECORD

CONTROL SECTION 2304
TRUNK HIGHWAY 16
COUNTY Fillmore
DISTRICT 6A

LIMITS: E. Jct. T.H. 52 E. of Preston - E. Co. Line



YEAR BUILT	PROJECT N°	DESCRIPTION			CODE N°
		TYPE	WIDTH	THICKNESS	
1932	16-9-25B 16-9-21-1&2	Ram Coat Type "A"	25'	5 1/2"	2" Wearing Course. 3 1/2" Base course.
1933	16-9-25A	Grading	32'		
1935	16-9-25A	Bit. Plant Mix (C. Agg. Type)	22'	2 1/8"	7 1/2" Waterbound Macadam Base Placed in 1934 by Direct Labor.
1936	16-9-25	Br. 3686 Br. 3687	30'		(Br Widening) 50' C. D. G. 30' C. D. G.
1936	16-9-21-1&2(3) 1936 A.F.E. 41 1937 A.F.E. 41	Pile & Timber Retaining Wall			(Exact location not known)
1940	2304-05 Br. 1783	Channel Change			W106D x 37
1940	A.F.E. 16	Bit. Seal Coat			AE-1, 3400 Gal./Mi. Sand, 106 C.Y./Mi. Maint. Dept.
1941	A.F.E. 17	Bit. Retreat	24'		AE-1, 4147 Gal./Mi. Agg. 119 C.Y./Mi. Maint. Dept.
1944	A.F.E. 4 A.F.E. 5	Spot Treat. Bit. Surf. Repair & Spot Seal Coat	24'		RT-5, 2456 Gal./Mi. Agg. 88 C.Y./Mi. Maint. Div.
1945	A.F.E. 4	Spot Treat. Bit. Surf. Repair			RT-5, 378 Gal./Mi. Agg. 23 C.Y./Mi. Maint. Div.
1945	A.F.E. 5	Bit. Seal Coat	25'		AE-1, 4000 Gal./Mi. Agg. 94 C.Y./Mi. Maint. Div.
1946	A.F.E. 26	Const. Dike & Masonry Dams Install C.M. Pipe			
1947	A.F.E. 4	Spot Treat. Bit. Surf. Repair	24'		MC-3, 52794 Gal. Agg. 2820 C.Y.
1948	2304-07 A.F.E. 44	Br. 6662 Br. Approaches	30'		80' B.S.



YEARS FROM	TOTAL MILES TO	UNINCORPORATED		INCORPORATED		RURAL		URBAN	
		RDWY. MI.	BR. MI.	RDWY. MI.	BR. MI.	RDWY. MI.	BR. MI.	RDWY. MI.	BR. MI.

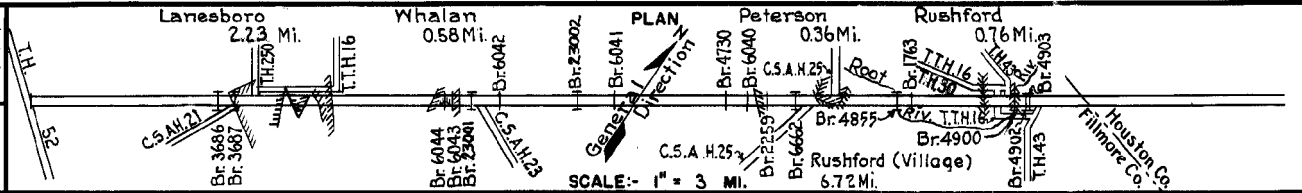
REMARKS: See Sheet N°1

PREPARED BY
HIGHWAY PLANNING SURVEY
IN COOPERATION WITH
U.S. PUBLIC ROADS ADMINISTRATION

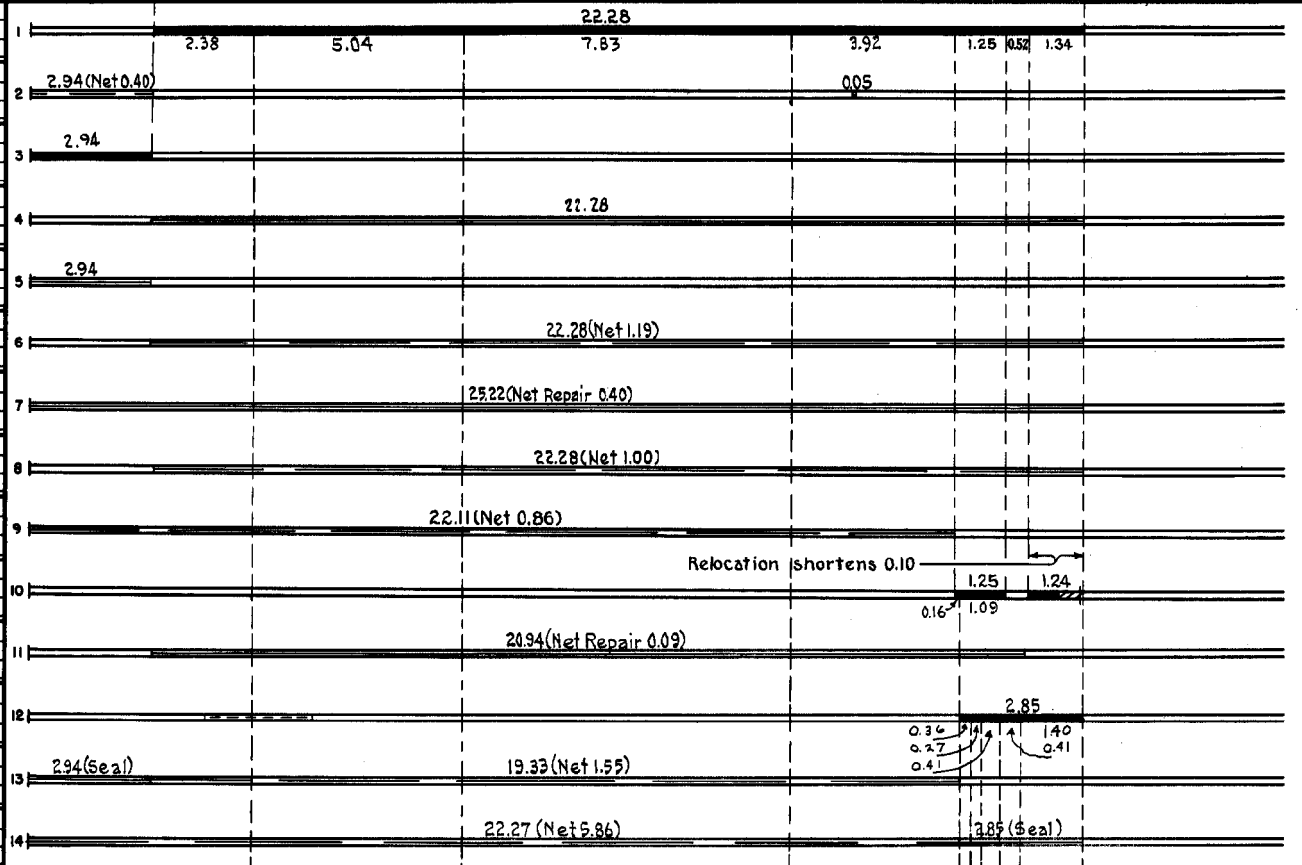
STATE OF MINNESOTA
DEPARTMENT OF HIGHWAYS
ROAD LIFE STUDIES
CONSTRUCTION PROJECT LOG RECORD

CONTROL SECTION 2304
TRUNK HIGHWAY 16
COUNTY Fillmore
DISTRICT 6A

LIMITS: E. Jct. T.H. 52 E. of Preston - E. Co. Line



YEAR BUILT	PROJECT N°	DESCRIPTION				CODE N°
		TYPE	WIDTH	THICKNESS	REMARKS	
1948	A.F.E. 22	Bit. Resurfacing Mixed Bit.	24'	1" added	MC-3, 169646 Gal. Agg. 15465 Tons	1
1949	A.F.E. 4	Spot Treat. Bit. Surf. Repair	24'		MC-3, 4215 Gal. Agg. 189 C.Y.	2
1950	A.F.E. 16	Bit. Resurfacing Mixed Bit.	24'	1" added	SC-3, MC-3, 22326 Gal. Agg. 1998 Tons	3
1950	A.F.E. 4	Light Bit. Seal	24'		RCS-1, 26424 Gal. Agg. 991 C.Y.	4
1951	A.F.E. 4	Light Bit. Seal	24'		RCS-1, 4001 Gal. Agg. 131 C.Y.	5
1952	A.F.E. 4	Spot Treat Bit. Surf. Repair	24'		MC-3, 5133 Gal. Agg. 275 C.Y.	6
1953	A.F.E. 604, 108*, 605	Spot Treat. Bit. Surf. Repair Light Bit. Seal (2722 M)	24'		RCS-2, MC-2&3, 45033 Gal. Agg. 1757 C.Y. *Bit. Repair on Park Area	7
1954	A.F.E. 604, 866	Spot Seal Coat Erosion Control *	24'		MC-2&3, 3611 Gal. Agg. 119 C.Y. * @ Mi. Pt. 16.50 & 24.00	8
1955	A.F.E. 604	Spot Treat. Bit. Surf. Repair	24'		SC-3, 3750 Gal. Agg. 285 Tons	9
1955	2304-08, 2304-10	Grading Crushed Rock Base Mixed Bit.	44', 26'	5'-6", 1 1/2"	1.24 Mi. on 12" Sand Const. C1212 Culv.	10
1956	A.F.E. 604, 605	Spot Treat. Bit. Surf. Repair Light Bit. Seal (20.94 Mi.)	24'		RCS-1, 52489 Gal. Agg. 43 Tons & 1850 C.Y.	11
1957	2304-12, A.F.E. 822	Plant Mix Bit Guard Rail (2293')	24'	3" added		12
1957	A.F.E. 604, 605	Spot Treat. Bit. Surf. Repair Bit Seal Coat	24'		MC-2, SC-3 & RS-2, 17334 Gal. Agg. 613 Tons & 333 C.Y.	13
1958	A.F.E. 604, 605	Spot Treat. Bit. Surf. Repair Light Bit. Seal	24'		SC-3, MC-2 & RS-2, 36031 Gal. Agg. 2522 Tons & 169 C.Y.	14



YEARS FROM	TOTAL MILES TO	UNINCORPORATED		INCORPORATED		RURAL		URBAN	
		RDWY. MI.	BR. MI.	RDWY. MI.	BR. MI.	RDWY. MI.	BR. MI.	RDWY. MI.	BR. MI.

REMARKS: See Sheet No. 1

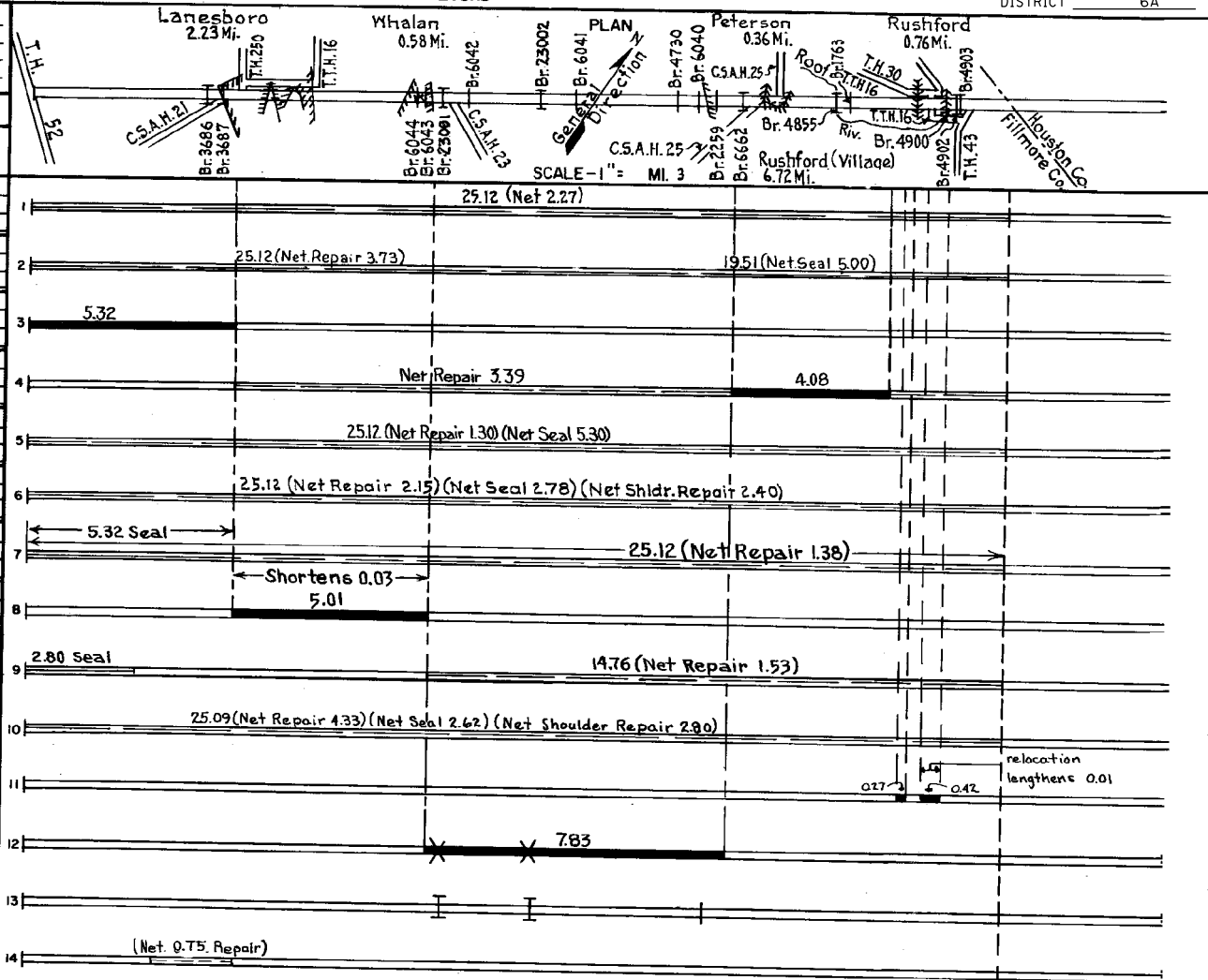
PREPARED BY
TRAFFIC AND PLANNING DIVISION
IN COOPERATION WITH
U.S. DEPARTMENT OF COMMERCE
BUREAU OF PUBLIC ROADS

STATE OF MINNESOTA
DEPARTMENT OF HIGHWAYS
ROAD LIFE STUDIES
CONSTRUCTION PROJECT LOG RECORD

CONTROL SECTION 2304
TRUNK HIGHWAY 16
COUNTY Fillmore
DISTRICT 6A

LIMITS: E. Jct. T.H. 52 E. of Preston - E. Co. Line

YEAR BUILT	PROJECT NO	DESCRIPTION			
		TYPE	WIDTH	THICKNESS	REMARKS
M 1959	A.F.E. 604	Spot Treat Bit. Surf. Repair	24'	3/4"	SC3, MC2, 13435 Gal. Agg. 1192 Tons
M 1960		Spot Treat Bit. Surf. Repair	24'		SC-3, MC2, 21793 Gal. Agg. 1901 Tons
		Spot Light Bit. Seal			RC5-1, 14592 Gal.
C 1961	2304-13	Grading Sub-base & Base Plant Mix Bit.	24'-30'	Vari. 3"	
C&M 1961	2304-15	Grading, Sub-base & Base Plant Mix Bit.	24'	3"	Variable depth base
		Spot Bit Surf. Repair	24'		SC-3, 20774 Gal.
C&M 1962		Bit Repair (Spot) Light Bit. Seal Rip Rap	24'	24'	Bit. Mix - 703 Tons; RC-2 13358 Gal. Agg. 406 C.Y. Rip Rap 1672 C.Y.
M 1963		Spot Light Seal and Bit. Surf. Repair	24'	24'	Bit. Mix 1086 Tons RC-2, 6219 Gal.
		Spot Shldr. Repair			MC2, Tack 1058 Gal.
M 1964	C	Light Bit. Seal	25'		RS-2K, 9162 Gal.
	C & SF	Spot Treat Bit. Surf. Repair	24'		Agg. 318 C.Y. Bit Mix 590 Tons
C 1965	2304-17 (5)	Grading Cr. rock Base Plant mix Bit.	24'	3"	Selected Granular Mat'l. under Base Widened in Lanesboro
M 1965	C	Light Bit. Seal	25'		Bit. Mix 918 Tons
	SF	Spot Treat Bit. Surf. Repair	24'		RS (Seal) 5778 Gal. Agg. 228 C.Y.
M 1967	SF	Spot Surf. Repair Light Bit. Seal	24'	3/4"	MC-250, 9765 Gal. 7 1/2 Tons; RC-250, 10264 Gal. Agg. 110 C.Y.
C 1968	2304-24	Grade, Base, Pl. Mix. Bit. Surf. & Br. Revision	24'	1 1/2-3"	Bit. Mat'l. 96 Ton Raise Br. 4900-6' & add 2-21' P.C. Spans
C 1969	2304-19	Grade, Base Pl. Mix. Bit. Surf. Crushed Rock Shldrs	24'	3"	Remove Brs. 4728 & 4729
C 1969	2304-19	Br. 23001 Br. 23002 Extend Br. 2259			122' B.S. 106' B.S. W/2-98" Span SPR
M 1970	SF	Spot Bit. Repair	24'	1/2"	RC-250 735 Gal. Agg. 199 Ton



YEARS		TOTAL MILES	UNINCORPORATED		INCORPORATED		RURAL		URBAN	
FROM	TO		RDWY. MI.	BR. MI.	RDWY. MI.	BR. MI.	RDWY. MI.	BR. MI.	RDWY. MI.	BR. MI.

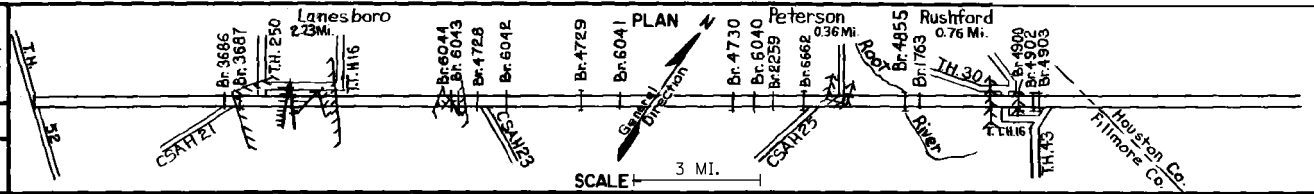
REMARKS: See Sheet No. 1
(5) S.P. 2304-6043 for extending Br. 6043 a W108 D, S.P. 2304-6044 for extending Br. 6044 a W 106 D.

PREPARED BY
 TRANSPORTATION & TRANSIT PLANNING & PROGRAMMING DIVISION
 IN COOPERATION WITH
 U.S. DEPARTMENT OF TRANSPORTATION-BUREAU OF PUBLIC ROADS

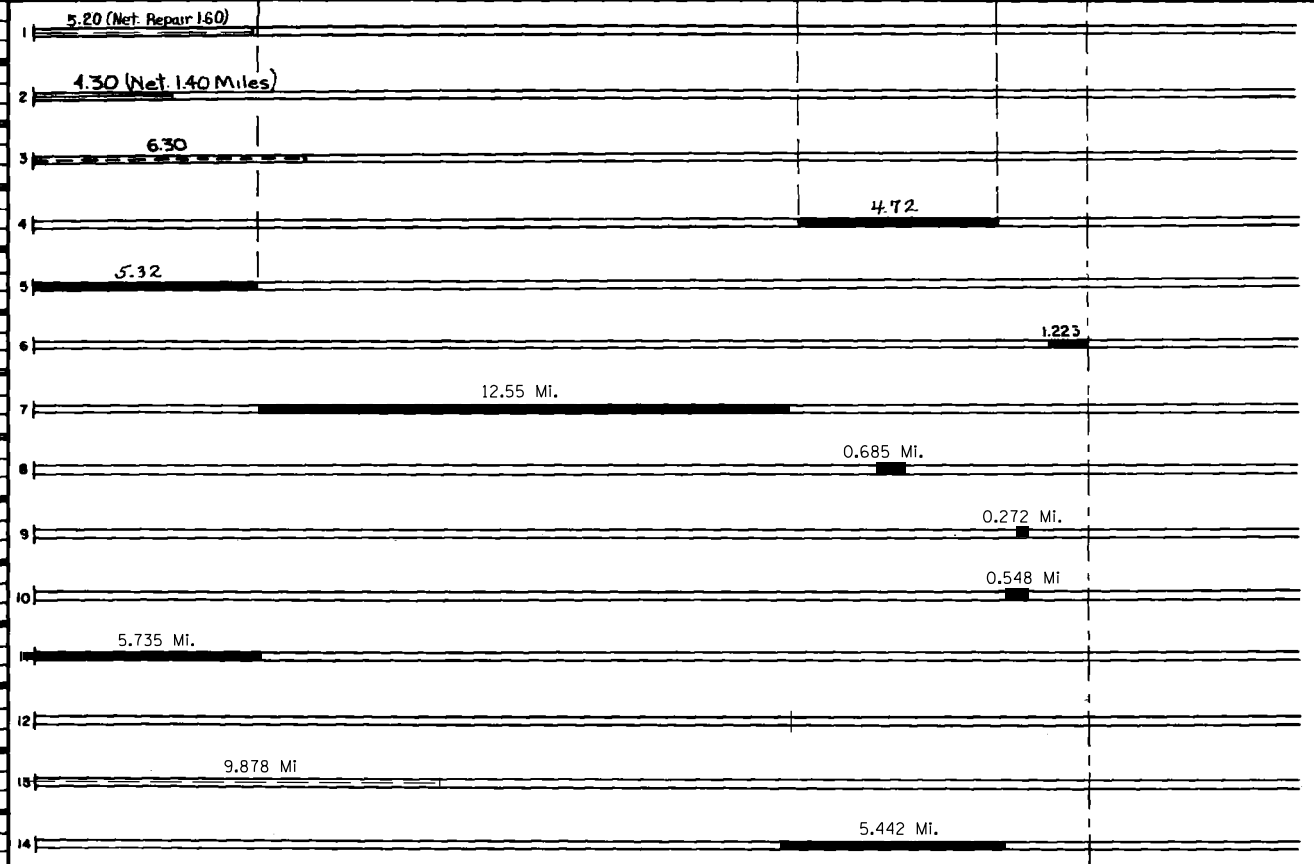
STATE OF MINNESOTA
 DEPARTMENT OF HIGHWAYS
 ROAD LIFE STUDIES
 CONSTRUCTION PROJECT LOG RECORD

CONTROL SECTION 2304
 TRUNK HIGHWAY 16
 COUNTY Fillmore
 DISTRICT 6A

LIMITS: E. Jct. TH 52 E of Preston - E. Co. Line
 Ref. Pt. 234+00.226 - 259+00.636



YEAR BUILT	PROJECT NO.	DESCRIPTION			
		TYPE	WIDTH	THICKNESS	REMARKS
M 1972	SF	Spot Bit. Repair	11'-22"	1"	Bit. Matl. 400 Gal. Agg 1129 Tons
M 1973	SF	Seal Coat			276 Tons
M 1972	SF	Bit. Surface Repair	24'	1/2"	600 Gals. Bit. 113 Tons.
C 1976	2304-29	Bit. Resurfacing & Turn Lanes	24'	1 1/2"	FROM STA. 690+00 TO STA. 959+60
C 1976	2304-30	Bit. Resurfacing	24'	2"	
M 1984	2304-35	Bit. Surfacing & Bit. Shoulders	24' 8'	1 1/2"-4" 1 1/2"	
C 1989	2304-37	Bit. Overlay	24'	3 1/2"	Spec. 2331
C 1990	2304-33	Grading Bit. Surfacing	24'	4 1/2"	Spec. 2331
C 1991	2304-34	Grading Bit. Overlay	24'	2 1/2" 2"	Spec. 2331 Spec. 2341
C 1992	2304-39	Mill & Bit. Overlay	24'	2" 2 1/2"	Spec. 2341 Spec. 2331
C 1995	2304-40	Bit. Overlay Guardrail	30'	2"-3"	Spec. 2341
M 1996	SF	Deck & Approach			6662 Stream
M 2001	2304-43	Bit. Seal Coat	24'		FA 3
M 2002	2304-44	Mill & Bit. Overlay	Var.	Var.	Spec. 2350



YEARS		TOTAL MILES	UNINCORPORATED		INCORPORATED		RURAL		URBAN	
FROM	TO		RDWY. MI.	BR. MI.	RDWY. MI.	BR. MI.	RDWY. MI.	BR. MI.	RDWY. MI.	BR. MI.

REMARKS: See Sheet No. 1

