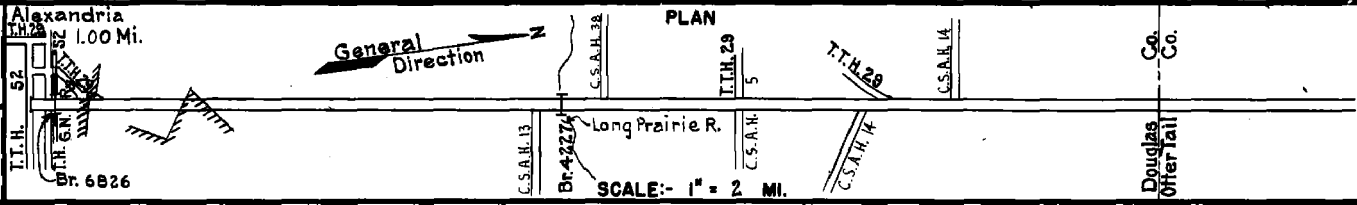


PREPARED BY
HIGHWAY PLANNING SURVEY
IN COOPERATION WITH
U. S. PUBLIC ROADS ADMINISTRATION

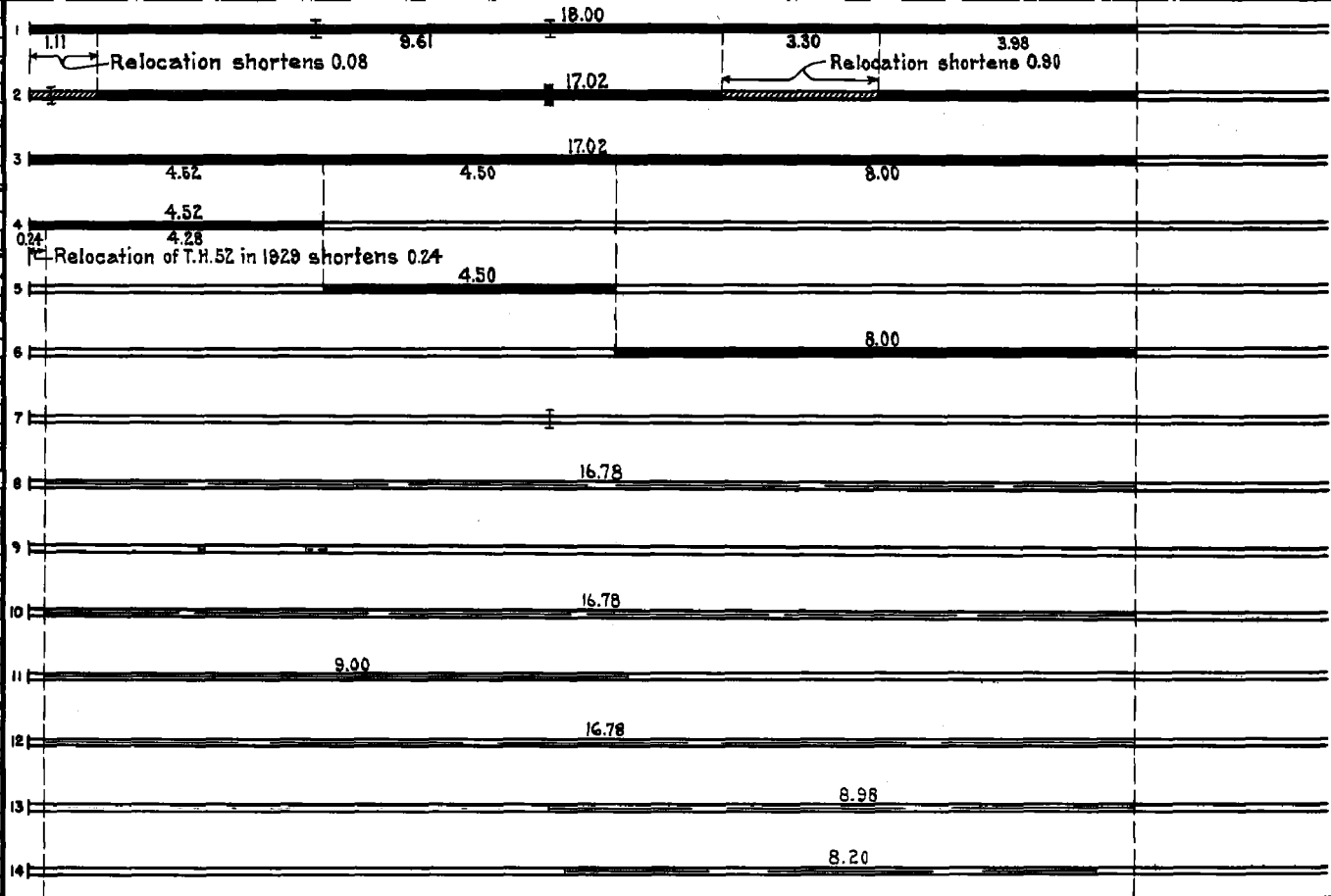
STATE OF MINNESOTA
DEPARTMENT OF HIGHWAYS
ROAD LIFE STUDIES
CONSTRUCTION PROJECT LOG RECORD

CONTROL SECTION 2103
TRUNK HIGHWAY 29
COUNTY Douglas
DISTRICT 48

LIMITS: E. Jct. T.H. 52 in Alexandria - N. Co. Line



YEAR BUILT	PROJECT N°	DESCRIPTION			CODE N°
		TYPE	WIDTH	THICKNESS	
		Earth (1)	20'		
		Br. 1047 & 4227	15-20'		
		Grading	30'		
1924	29-29-23A&B	Br. 5735	24'		
		Br. 4227	24'		
1925	29-29-23A&B	Gravel	24'	1 1/2"	
		(2)			
1926	29-29-23A	Tar Tr. Gravel	20'	1 1/2"	
		(2)			
1930	29-29-23A&B	Tar Tr. Gravel	20'	1 1/2"	
		(2)			
1931	29-29-23B	Tar Tr. Gravel	20'	1 1/2"	
		(2)			
1936	29-29-23A&B	Br. 4227	29'		
M		Spot Treat.			
1941	A.F.E. 37	Bit. Surf. Repair			
C		Oversize Gravel			
1942	A.F.E. 24	Revetment			
M		Spot Treat.			
1942	A.F.E. 4	Bit. Surf. Repair			
M		Spot Treat.			
1942	A.F.E. 5	Bit. Seal Coat			
M		Spot Treat.			
1943	A.F.E. 4	Bit. Surf. Repair			
M		Spot Treat.			
1944	A.F.E. 4	Bit. Surf. Repair			
M		Spot Treat.			
1945	A.F.E. 4	Bit. Surf. Repair	20'		



YEARS		TOTAL MILES	UNINCORPORATED		INCORPORATED		RURAL		URBAN	
FROM	TO		RDWY. MI.	BR. MI.	RDWY. MI.	BR. MI.	RDWY. MI.	BR. MI.	RDWY. MI.	BR. MI.
1921	1923	18.00	17.17	0.02	0.77	0.04	17.17	0.02	0.77	0.04
1924	1928	17.02	16.27	0.02	0.69	0.04	16.27	0.02	0.69	0.04
1929	1935	16.75	16.27	0.02	0.45	0.04	16.27	0.02	0.45	0.04
1936	1949	16.78	16.28	0.01	0.45	0.04	16.28	0.01	0.45	0.04
1950	1953	16.81	16.30	0.01	0.46	0.04	16.30	0.01	0.46	0.04
1954	1956	16.81	15.30	0.01	0.46	0.02	15.30	0.01	0.46	0.02
1957	1958	16.46	15.58	0.01	0.85	0.02	15.58	0.01	0.85	0.02

REMARKS: Layout is to scale as of 1929

(1) Br. 1047 built by County in 1916

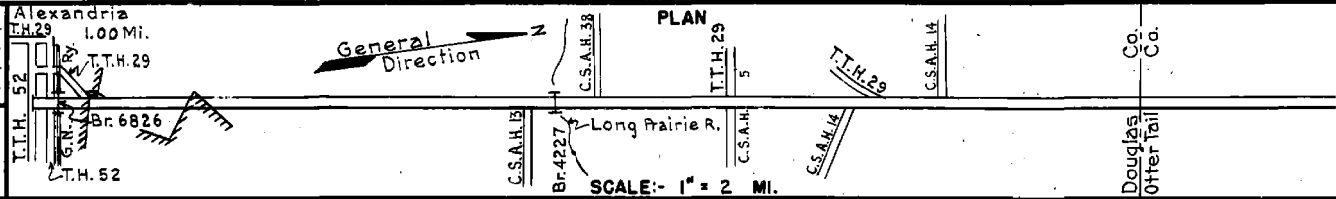
(2) This work not done under these project numbers but lies within the limits of these projects

PREPARED BY
HIGHWAY PLANNING SURVEY
IN COOPERATION WITH
U.S. PUBLIC ROADS ADMINISTRATION

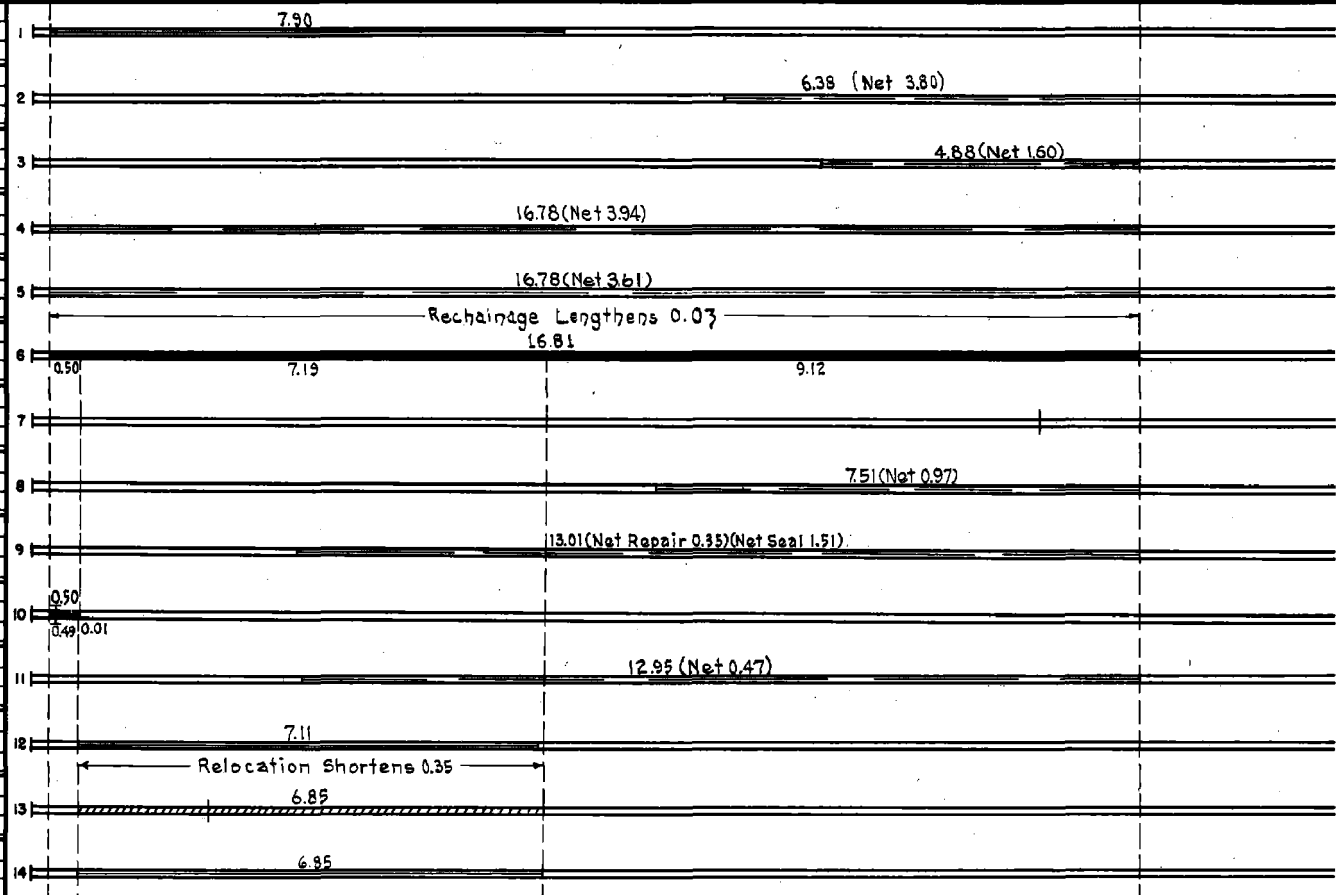
STATE OF MINNESOTA
DEPARTMENT OF HIGHWAYS
ROAD LIFE STUDIES
CONSTRUCTION PROJECT LOG RECORD

CONTROL SECTION 2103
TRUNK HIGHWAY 29
COUNTY Douglas
DISTRICT 48

LIMITS: E. Jct. T.H. 52 in Alexandria - No. Co. Line



YEAR BUILT	PROJECT N°	DESCRIPTION			CODE N°
		TYPE	WIDTH	THICKNESS	
M	1945 A.F.E. 5	Bit. Seal Coat	22'		
M	1946 A.F.E. 4	Spot Treat. Bit. Surf. Repair	24'		
M	1947 A.F.E. 4	Spot Treat. Bit. Surf. Repair	24'		
M	1948 A.F.E. 4	Spot Treat. Bit. Surf. Repair	24'		
M	1949 A.F.E. 4	Spot Treat. Bit. Surf. Repair	24'		
C	1950 2103-04 A.F.E. 28	Plant Mix Bit Shoulders	24'	1 1/2"	
C	1952 AFE 32	Install Culvert			24' x 52' C.M.
M	1953 A.F.E. 604	Spot Treat. Bit. Surf. Repair	24'		
M	1954 A.F.E. 604	Spot Treat. Bit. Surf. Repair Spot Bit. Seal	24'		
C	1954 2103-07 2103-06	Bit. Stab. Base Plant Mix Bit. Br. 6826	50'	13'-19" 2"	
M	1955 A.F.E. 604	Spot Treat. Bit. Surf. Repair	24'		
M	1956 A.F.E. 605	Light Bit. Seal	24'		
C	1957 2103-10	Grading Gravel Base Mixed Bit. (Base)	40'	3'-5" 1 1/2"	
M	1959 A.F.E. 605	Light Bit. Seal	25'		



YEARS		TOTAL MILES	UNINCORPORATED		INCORPORATED		RURAL		URBAN		REMARKS: See Sheet N°1
FROM	TO		RDWY. MI.	BR. MI.	RDWY. MI.	BR. MI.	RDWY. MI.	BR. MI.	RDWY. MI.	BR. MI.	
1959	1960	16.46	15.45	0.01	0.98	0.02	15.45	0.01	0.98	0.02	
1961		16.72	15.41	0.01	0.98	0.02	15.41	0.01	0.98	0.02	

