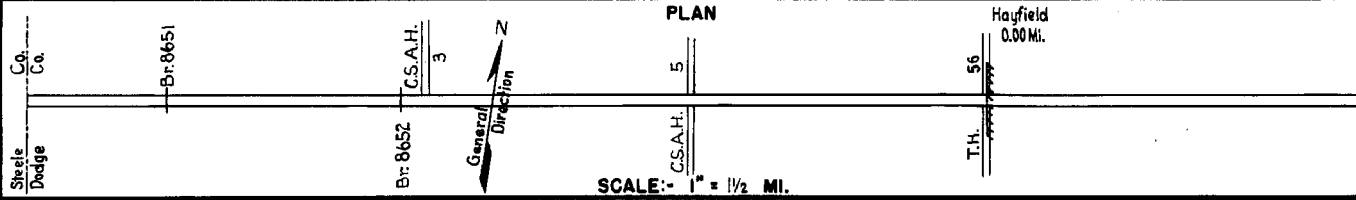


PREPARED BY  
HIGHWAY PLANNING SURVEY  
IN COOPERATION WITH  
U. S. PUBLIC ROADS ADMINISTRATION

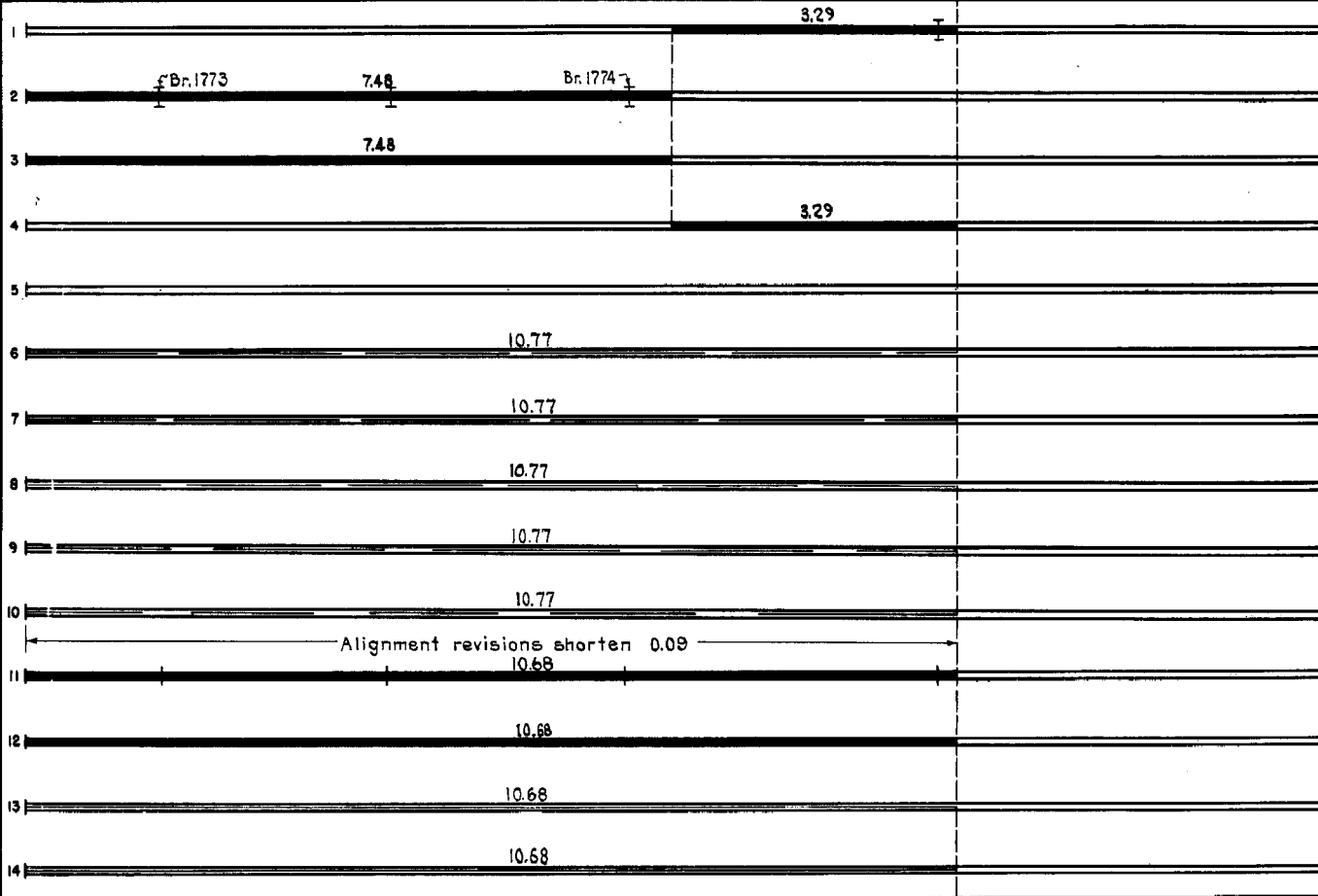
STATE OF MINNESOTA  
DEPARTMENT OF HIGHWAYS  
ROAD LIFE STUDIES  
CONSTRUCTION PROJECT LOG RECORD

CONTROL SECTION 2003  
TRUNK HIGHWAY 30  
COUNTY Dodge  
DISTRICT 6B

LIMITS: W.Co. Line - Jct. T.H. 56 at W. Corp. Limits of Hayfield



YEAR BUILT	PROJECT N°	DESCRIPTION				CODE N°
		TYPE	WIDTH	THICKNESS	REMARKS	
1920	30-41-1	Grading Br. 2873	24'		14' C.S.	
1921	30-41-2	Grading Br. 1773, 1775 & 1774	24'		40' C.T.G., 40' C.T.G. & 24' C.S.	
1921	30-41-22 A & B	Gravel	24'	3 1/2"	1600 C.Y./Mile.	
1921	30-41-21	Gravel	24'	3 1/2"	1600 C.Y./Mile.	
1937	30-41-21	Roadside Develop.			Location unknown	
M	1940	A.F.E. 28	Spot Graveling		185 C.Y./Mi. Maint. Dept.	
M	1942	A.F.E. 6	Spot Graveling		301 C.Y./Mi. Maint. Dept.	
M	1943	A.F.E. 6	Grav. Resurface (Spots)		209 C.Y./Mi. Maint. Dept.	
M	1944	A.F.E. 6	Grav. Resurface (Spots)		387 C.Y./Mi. Maint. Div.	
M	1945	A.F.E. 6	Grav. Resurfacing (Spots)	24'	60 C.Y./Mi. Maint. Div.	
C	1948	2003-03	Grading Stab. Gravel Mono. Culverts (1)	38'	1.5' Select Mat'l. 1200 C.Y./Mi.	
C	1950	2003-04	Sand-Gavel Sub-base Crushed Rock Base (2) Plant Mix Bit.	7' 22' 24'	3" 3" 1 1/2"	
M	1953	A.F.E. 605	Light Bit. Seal	24'	RG-2, 18630 Gal. Agg. 464 C.Y.	
M	1956	A.F.E. 605	Light Bit. Seal	24'	RS-2, 17735 Gal. Agg. 625 C.Y.	



YEARS		TOTAL MILES	UNINCORPORATED		INCORPORATED		RURAL		URBAN	
FROM	TO		RDWY. MI.	BR. MI.	RDWY. MI.	BR. MI.	RDWY. MI.	BR. MI.	RDWY. MI.	BR. MI.
1921	1947	10.77	10.75	0.02	0.00	0.00	10.75	0.02	0.00	0.00
1948		10.68	10.68	0.00	0.00	0.00	10.68	0.00	0.00	0.00

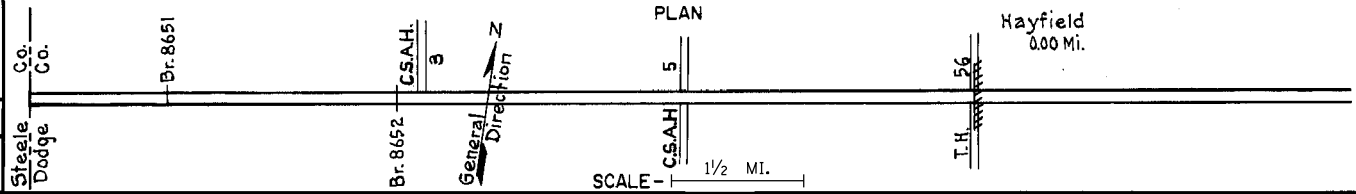
REMARKS: Layout is to scale as of 1921  
(1) Br. 8651, C (11-14-11) 10x46'; Br. 8652, C (11-14-11) 10x50'; C 106x46' & C 128x54'.  
(2) Contract not final but work substantially complete in 1970

PREPARED BY  
TRAFFIC AND PLANNING DIVISION  
IN COOPERATION WITH  
U.S. DEPARTMENT OF COMMERCE  
BUREAU OF PUBLIC ROADS

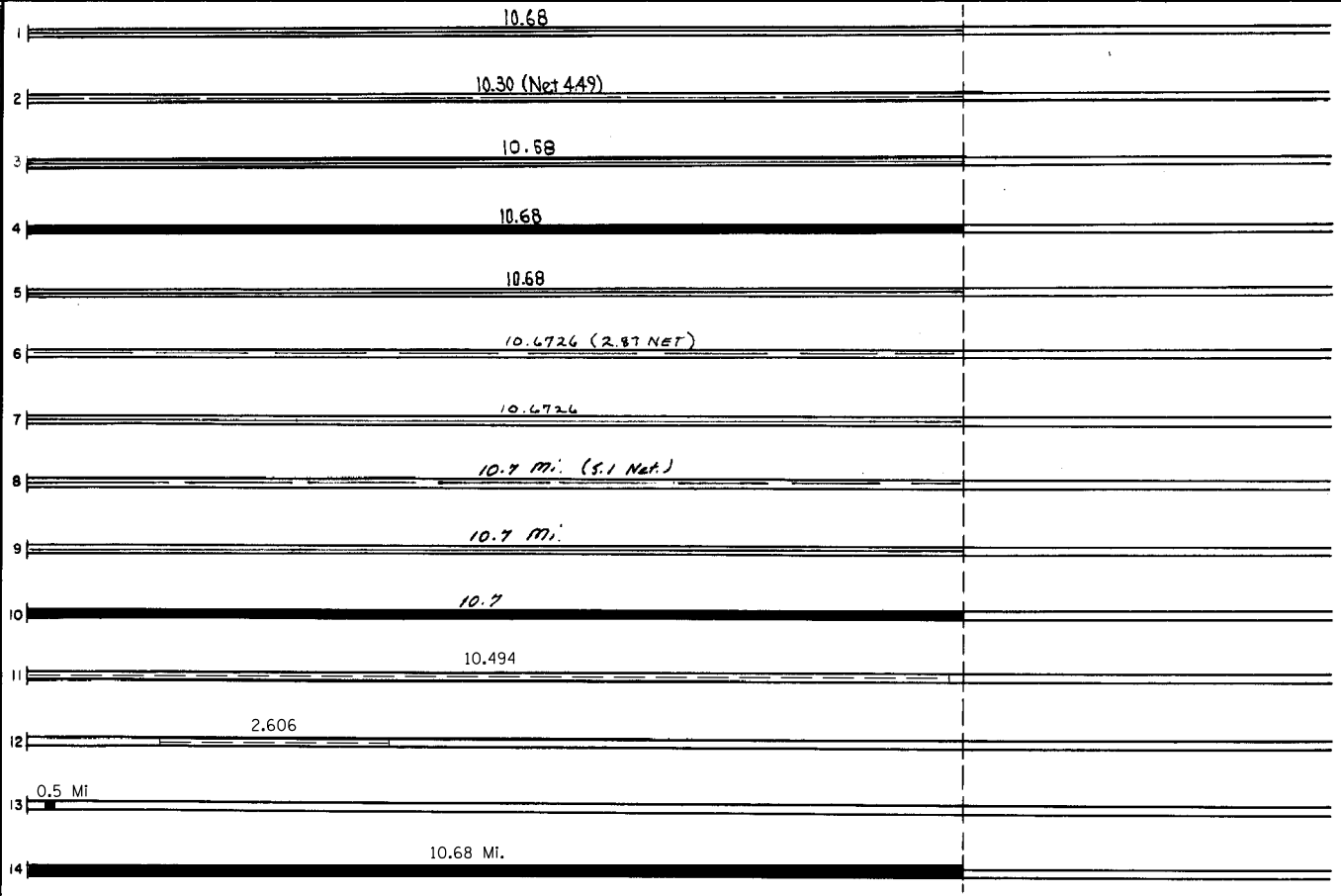
STATE OF MINNESOTA  
DEPARTMENT OF HIGHWAYS  
ROAD LIFE STUDIES  
CONSTRUCTION PROJECT LOG RECORD

CONTROL SECTION 2003  
TRUNK HIGHWAY 30  
COUNTY Dodge  
DISTRICT 6B

LIMITS: W. Co. Line - Jct. T.H. 56 at W. Corp. Limits of Hayfield  
Ref. Pt. 191+00.772 - 202+00.561



YEAR BUILT	PROJECT NO	DESCRIPTION			
		TYPE	WIDTH	THICKNESS	REMARKS
M	1958 A.F.F. 60B	Light Bit Seal	25'		RS-2, 1891.4 Gal. Agg. 602 C.Y.
M	1962	Spot Treat Bit. Surf. Repair			MC-2, 17430 Gal. Agg. 1428 tons MC-2, 1ack 1896 Gal.
M	1964 c	Light Bit Seal	25'		RS-2k, 17270 Gal. Agg. 630 C.Y.
C	1966 Maint. Proj.	Plant Mix Bit Gravel Shoulders	24'	2 1/2"	
C	1972 2003-06	Light Bit Seal			CRS 36,500 Gal. Agg. 1825 tons
M	1976 SF	Bit OVERLAY	24'	1"	AC-1 2331 RD 250 TACK
M	1976 SF	SHOULDER REPAIR	4'	2"	SHOULDER AGG.
M	1978 SF	Bit Surface Repair	24'	1 1/2"	4,816 Ton 1,625 Gal Tack CSAH AC-1, 2331 Wharfing
M	1978 SF	Gravel Shoulder Repair	2'	2"-2"	2,024 Ton
C	1981 2003-08 FO17-2(U)	Bit Resurfacing Tack Layers	24'	2 1/2"	
M	1987 SF	Gravel Shoulders	4'	2"	
M	1990 SF	Wedge Paving			
M	2002 2003-11	Mill Bit. Overlay	24'	1.5"	Spec. 2350
S	2009 2003-12	Mill & Bit. Overlay	var.	var.	Spec. 2360



YEARS FROM	YEARS TO	TOTAL MILES	UNINCORPORATED		INCORPORATED		RURAL		URBAN	
			RDWY. MI.	BR. MI.	RDWY. MI.	BR. MI.	RDWY. MI.	BR. MI.	RDWY. MI.	BR. MI.

REMARKS: See Sheet No. 1

