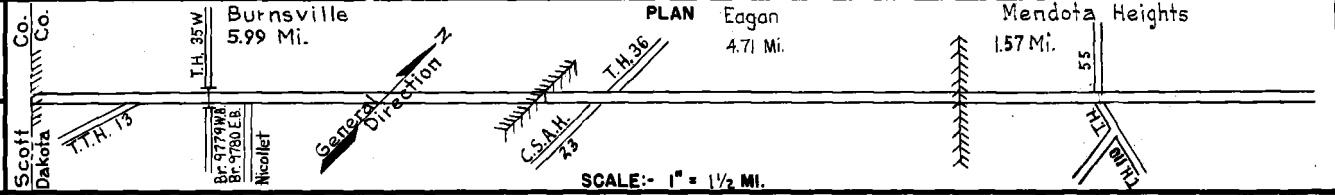


PREPARED BY  
HIGHWAY PLANNING SURVEY  
IN COOPERATION WITH  
U.S. PUBLIC ROADS ADMINISTRATION

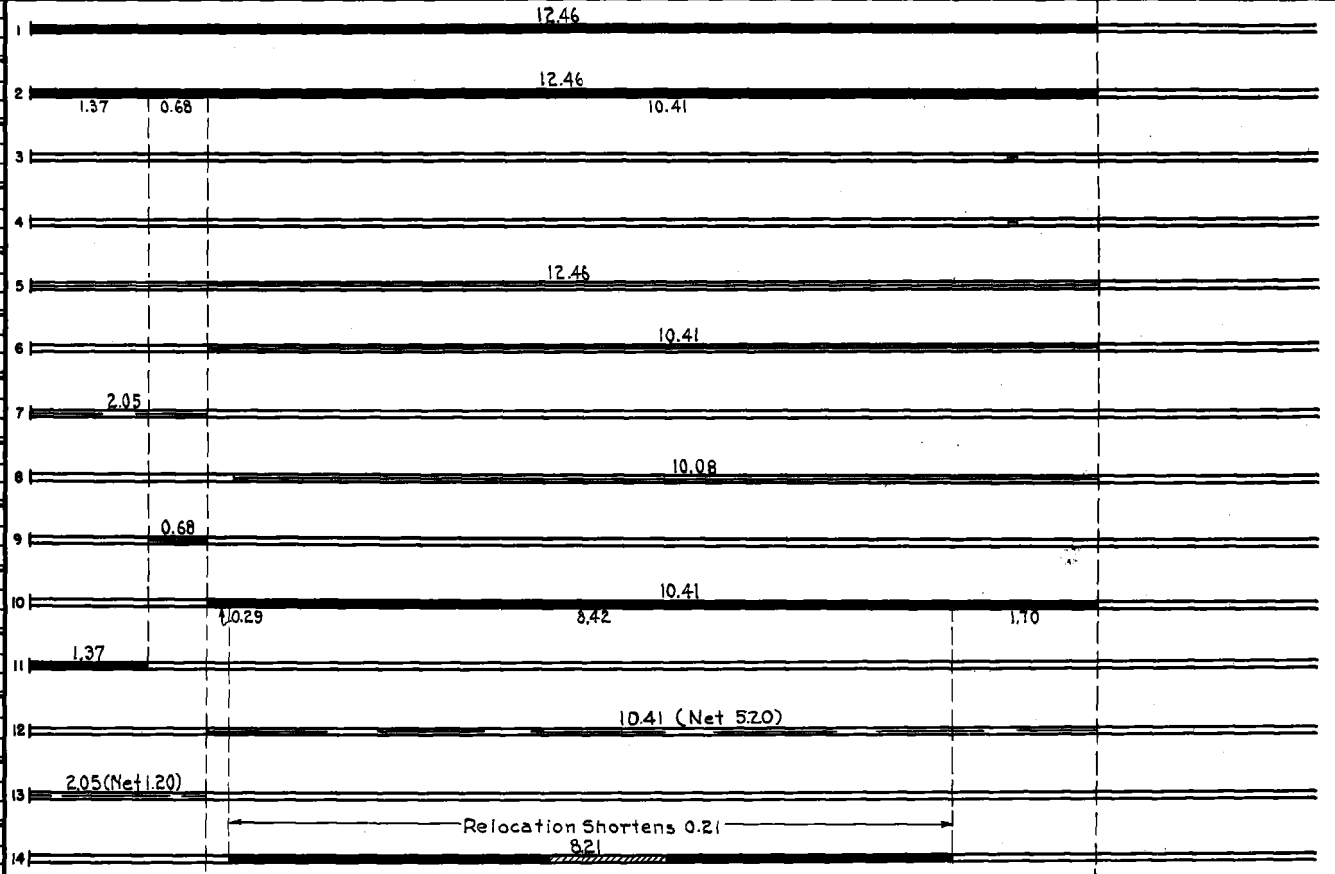
STATE OF MINNESOTA  
DEPARTMENT OF HIGHWAYS  
ROAD LIFE STUDIES  
CONSTRUCTION PROJECT LOG RECORD

CONTROL SECTION 1901  
TRUNK HIGHWAY 13  
COUNTY Dakota  
DISTRICT 5A-9A

LIMITS: W. Co. Line - Jct. T.H. 55 in Mendota Heights



YEAR BUILT	PROJECT N°	DESCRIPTION			CODE N°
		TYPE	WIDTH	THICKNESS	
		Gravel	28'	1 1/2"	No Record of Constr. Added in 1934.
1936		Oil Tr. Gravel	20'	1/2"	4500 Gal./Mi. Maint. Div.
1938	13-117-21-1	Roadside Develop.			Overlook.
1939	1901-01	Roadside Develop.			Planting Trees, Shrubs & Vines.
M	1940 A.F.E. 16 (Dist. 11)	Bit. Retreat	20'		SG-3, 2594 Gal./Mi. Grav. 166 C.Y./Mi. Maint. Div.
M	1941 A.F.E. 32 (Dist. 11)	Bit. Retreat	22'		SG-3, 1571 Gal./Mi. Maint. Div.
M	1943 A.F.E. 23 (Dist. 9)	Subgrade Treat. Spot Treat.	23'		Pl. Mix. Bit 79 C.Y./Mi. Grav. 455 C.Y./Mi. Maint. Div.
M	1943 A.F.E. 4 (Dist. 11)	Bit. Surf. Repair	27'		RT-6, 1115 Gal./Mi. Grav. 59 C.Y./Mi. Maint. Div.
M	1944 A.F.E. 4	Bit. Seal Coat	26'		RT-10, 2683 Gal./Mi. Sand 121 T./Mi. Maint. Div.
C	1944 A.F.E. 4	Bit. Resurfacing Mixed Bit	20'	1" added	MC-3, 6985 Gal./Mi. Grav. 332 C.Y./Mi. Maint. Div.
C	1945 A.F.E. 25	Bit. Resurfacing Mixed Bit	24'	5/8" added	RT-6, 7077 Gal./Mi. Grav. 300 C.Y./Mi. Maint. Div.
M	1947 A.F.E. 4	Spot Treat. Bit. Surf. Repair	20'		SG-3, 26752 Gal. Agg. 1488 C.Y.
M	1948 A.F.E. 4	Spot Treat. Bit. Surf. Repair	24'		MC-3, 9201 Gal. Agg. 423 C.Y.
C	1948 1901-04	Grading Stab. Gravel	36'	2"	1200 C.Y./Mi.



YEARS		TOTAL MILES	UNINCORPORATED		INCORPORATED		RURAL		URBAN	
FROM	TO		RDWY. MI.	BR. MI.	RDWY. MI.	BR. MI.	RDWY. MI.	BR. MI.	RDWY. MI.	BR. MI.
1934	1947	12.46	12.46	0.00	0.00	12.46	0.00	0.00	0.00	
1948	1956	12.25	12.25	0.00	0.00	12.25	0.00	0.00	0.00	
1956	1959	12.35	10.65	0.00	1.57	10.65	0.00	1.57	0.00	
1960	1960	12.22	10.61	0.04	1.57	10.61	0.04	1.57	0.00	
1961	1963	12.27	10.66	0.04	1.57	10.66	0.04	1.57	0.00	
1964	1971	12.27	4.71	0.00	7.52	4.71	0.00	7.52	0.04	
1972		12.27	0.00	0.00	12.23	0.04	0.00	0.00	12.23	0.04

REMARKS: Layout is to scale as of 1934  
See sheet A1 for data on new location

PREPARED BY  
HIGHWAY PLANNING SURVEY  
IN COOPERATION WITH  
U.S. PUBLIC ROADS ADMINISTRATION

STATE OF MINNESOTA  
DEPARTMENT OF HIGHWAYS  
ROAD LIFE STUDIES  
CONSTRUCTION PROJECT LOG RECORD

CONTROL SECTION 1901  
TRUNK HIGHWAY (1) (New 13)  
COUNTY Dakota  
DISTRICT 5A-9A

LIMITS: W. Co. Line to Jct. T.H. 13

Dakota  
Scott  
Co.  
New T.H. 13 temporarily marked as T.H. 101  
T.H. 13 (See Sheet A1)

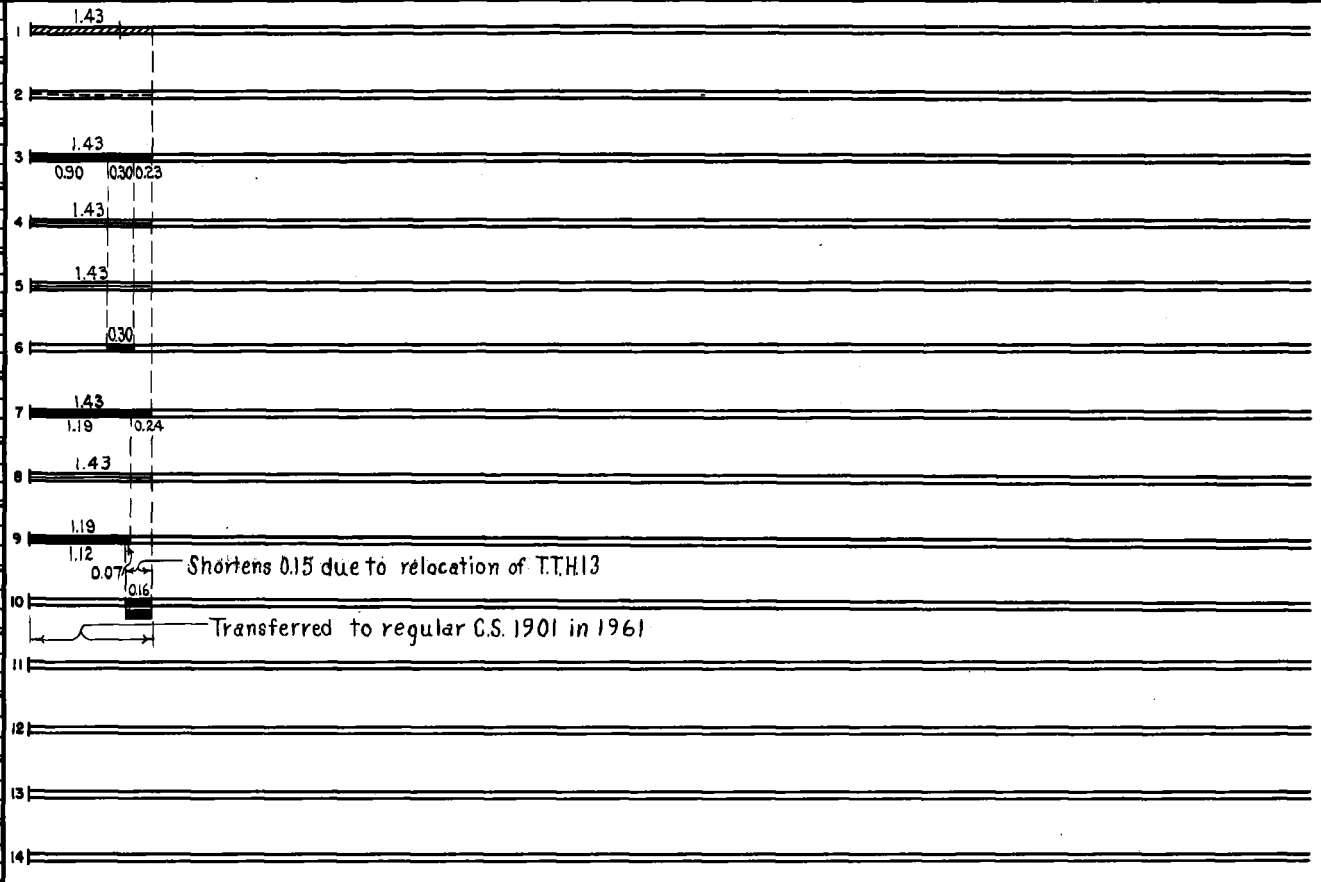
Burnsville

PLAN

This portion of T.H. 13 which was temporarily marked T.H. 101 prior to 1961 transferred to regular C.S. 1901

SCALE:- 1" = 1/2 MI.

YEAR BUILT	PROJECT N°	DESCRIPTION			CODE N°
		TYPE	WIDTH	THICKNESS	
C 1941	1901-03	Grading Culvert	38'		C 46 X 49
C 1941	A.F.E. 8 (Dist. 9)	Seeding			Seed supplied by R.S.D. (S.P. 1901-10) Maint. Div.
C 1942	A.F.E. 22 A.F.E. 20 (Dist. 9)	Gravel Lift Mixed Bit.	32'	4" 1"+	SG3&RT-2, 16539 G./Mi. Grav. 2327 C.Y./Mi. Maint. Div.
M 1944	A.F.E. 4	Bit Seal Coat	24'		RT-10, 2683 Gal./Mi. Sand 121 T./Mi. Maint. Div.
M 1947	A.F.E. 4	Bit. Fog Seal	24'		RC-2, 1905 Gal. Agg. 21 C.Y.
C 1948	A.F.E. 20	Gravel Lift Bit Surfacing Mixed Bit.	26'	4" 1"	MC3&RT-6, 4757 Gal. Agg. 137 C.Y.
C 1949	1901-18 (2) A.F.E. 33	Bit Resurfacing Plant Mix Bit. Gravel Shoulders	24'	1 1/2" 12'	added thickness 6 Rt. & Lt.
M 1954	A.F.E. 605	Light Bit. Seal	24'		RS-2, 2259 Gal. Agg. 90 C.Y.
C 1957	1901-26	Spot Gravel Base Spot Pl. Mix Bit. Base Plant Mix Bit.	38' 26' 24'	11" 3" 3"	
C 1960	1901-08	Grading Base Asphaltic Conc.			Divided Highway



YEARS		TOTAL MILES	UNINCORPORATED			INCORPORATED			RURAL		URBAN	
FROM	TO		RDWY. MI.	BR. MI.	RDWY. MI.	BR. MI.	RDWY. MI.	BR. MI.	RDWY. MI.	BR. MI.		
1941	1959	1.43	1.43	0.00	0.00	0.00	1.43	0.00	0.00	0.00		
1960	1960	1.28	1.28	0.00	0.00	0.00	1.28	0.00	0.00	0.00		
1961		0.00	0.00	0.00	0.00	0.00	0.00	0.00	0.00	0.00		

REMARKS: Layout is to scale as of 1941

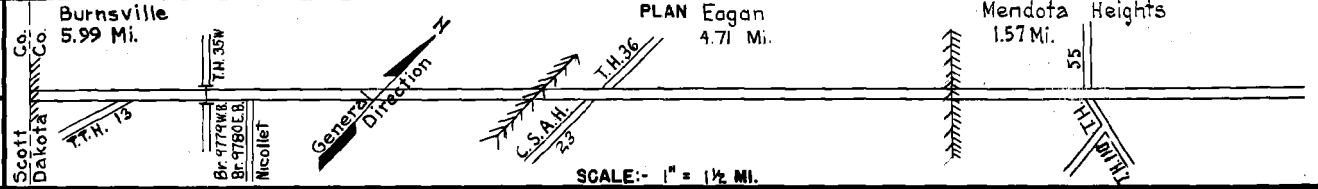
(1) This new construction not in use as T.H. 13 until project connecting T.H. 13 & T.H. 101 west of Savage is built. This 1.43 miles is marked temporarily as T.H. 101. (2) Contract not final on S.P. 1901-18 but work substantially complete in 1949.

PREPARED BY  
HIGHWAY PLANNING SURVEY  
IN COOPERATION WITH  
U.S. PUBLIC ROADS ADMINISTRATION

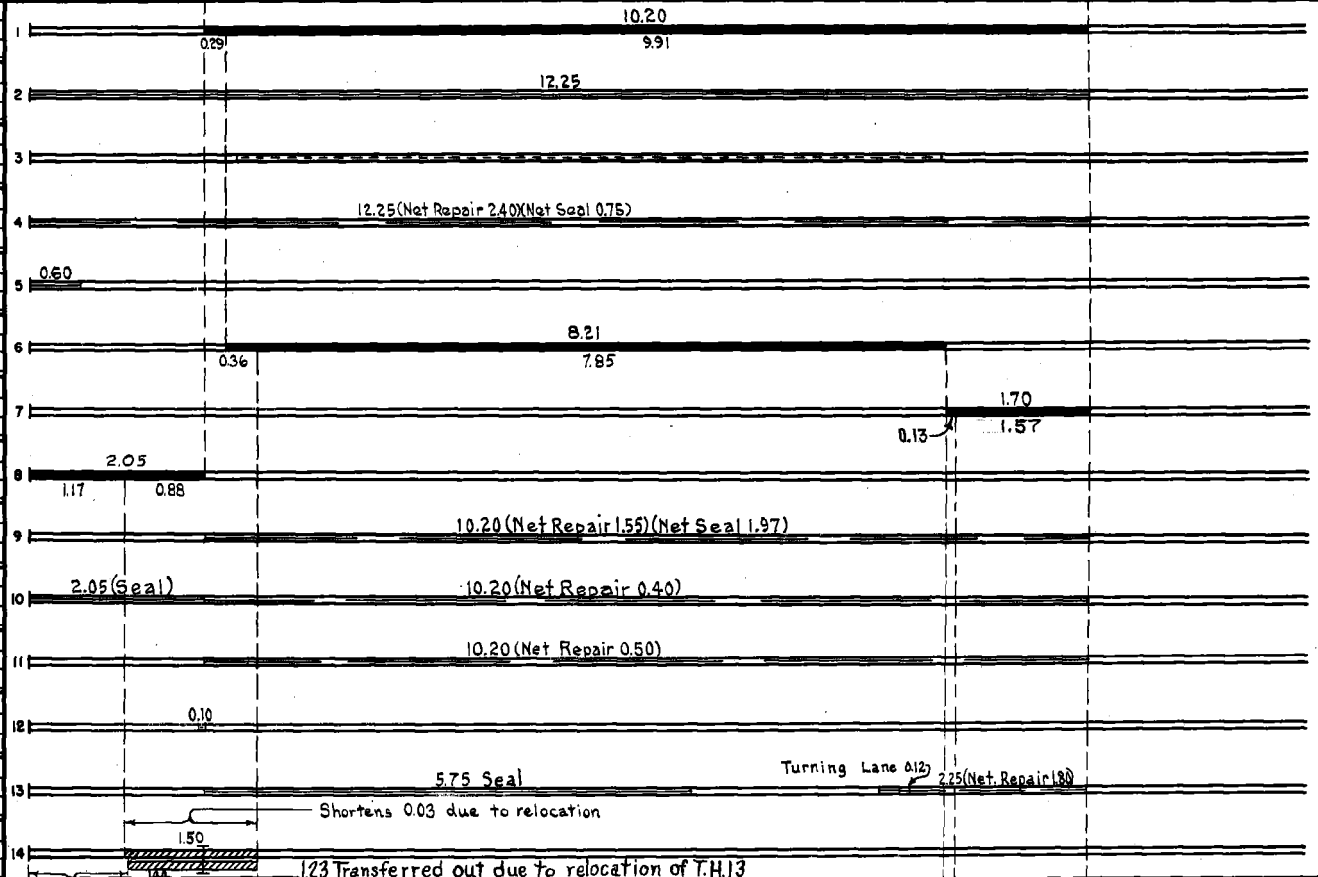
STATE OF MINNESOTA  
DEPARTMENT OF HIGHWAYS  
ROAD LIFE STUDIES  
CONSTRUCTION PROJECT LOG RECORD

CONTROL SECTION 1901  
TRUNK HIGHWAY 19  
COUNTY Dakota  
DISTRICT 5A-9A

LIMITS: W. Co. Line - Jct. T.H. 55 in Mendota Heights



YEAR BUILT	PROJECT N <sup>o</sup>	DESCRIPTION			CODE N <sup>o</sup>
		TYPE	WIDTH	THICKNESS	
C	1948 A.F.E. 26	Mixed Prime Bit. Surfacing	28'	1 1/4"	Mixed Prime over new grade only
M	1949 A.F.E. 4	Bit. Fog Seal	22'		Bit. 19595 Gal. Agg. 324 C.Y.
C	1951 A.F.E. 7	Seeding			
M	1951 A.F.E. 23	Spot Treat.			Bit. 23780 Gal.
M	1951 A.F.E. 4	Bit. Surf. Repair	22'		Agg. 1205 C.Y.
M	1952 A.F.E. 4	Bit. Surf. Repair	22'		Spot Grav. Lift (0.30 Mi) SC-3, 6071 Gal. Agg. 316 C.Y.
C	1952 1901-19	Gravel Base	36'	4-7"	
C	A.F.E. 7	Plant Mix Bit. Seeding	24'	1 1/2"	
C	1952 A.F.E. 34	Bit. Resurfacing	22'	2" added	1675 Tons of Mixture
C	1954 A.F.E. 820	Bit. Resurfacing	22'	1" added	SC-4, 17113 Gal. Agg. 1386 Tons
M	1955 A.F.E. 604	Spot Treat	24'		MC-3 & RG-2, 13449 Gal. Agg. 1200 tons & 200 C.Y.
M	1956 A.F.E. 605	Light Bit. Seal	22'		RC-2, 3074 Gal. Agg. 120 C.Y.
M	1956 A.F.E. 604	Bit. Surf. Repair	24'		Plant Mix 272 Tons
M	1957 A.F.E. 604	Spot Treat	24'		MC-3, 3393 Gal. Agg. 314 Tons
M	1957 A.F.E. 604	Bit. Surf. Repair	24'		*359 tons Gravel
M	1958 A.F.E. 604	Bit. Surf. Repair	24'		Plant Mix 61 Tons
C & M	1959 A.F.E. 826	Turning Lane (Mi. Pt. 1024-1025)	24'		
C & M	1959 A.F.E. 604	Bit. Surf. Repair	24'		MC-3, 16326 Gal.
C & M	1959 A.F.E. 605	Light Bit. Seal	24'		RC-2, 9210 Gal.
C	1901-08	Grading, Asphaltic Conc.	24'	4"	1.44 Mi. Divided Hwy.
C	1981-04	Grading, Asphaltic Conc.	24'	4"	
C	1981-02	Br's. 9774 & 9780	39'		188' B.S. - O.H.



YEARS FROM	TOTAL MILES TO	UNINCORPORATED		INCORPORATED		RURAL		URBAN	
		RDWY. MI.	BR. MI.	RDWY. MI.	BR. MI.	RDWY. MI.	BR. MI.	RDWY. MI.	BR. MI.

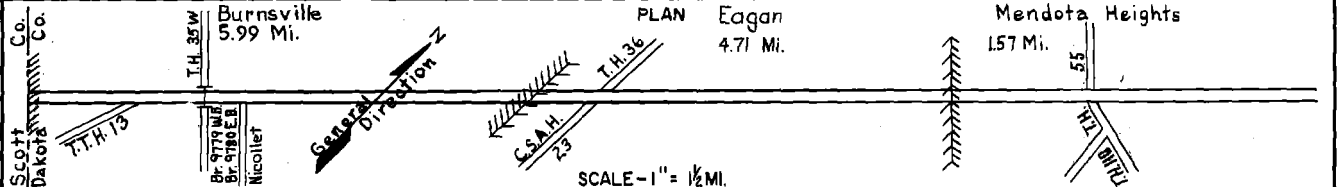
REMARKS: See Sheet No. 1

PREPARED BY  
TRAFFIC AND PLANNING DIVISION  
IN COOPERATION WITH  
U.S. DEPARTMENT OF COMMERCE  
BUREAU OF PUBLIC ROADS

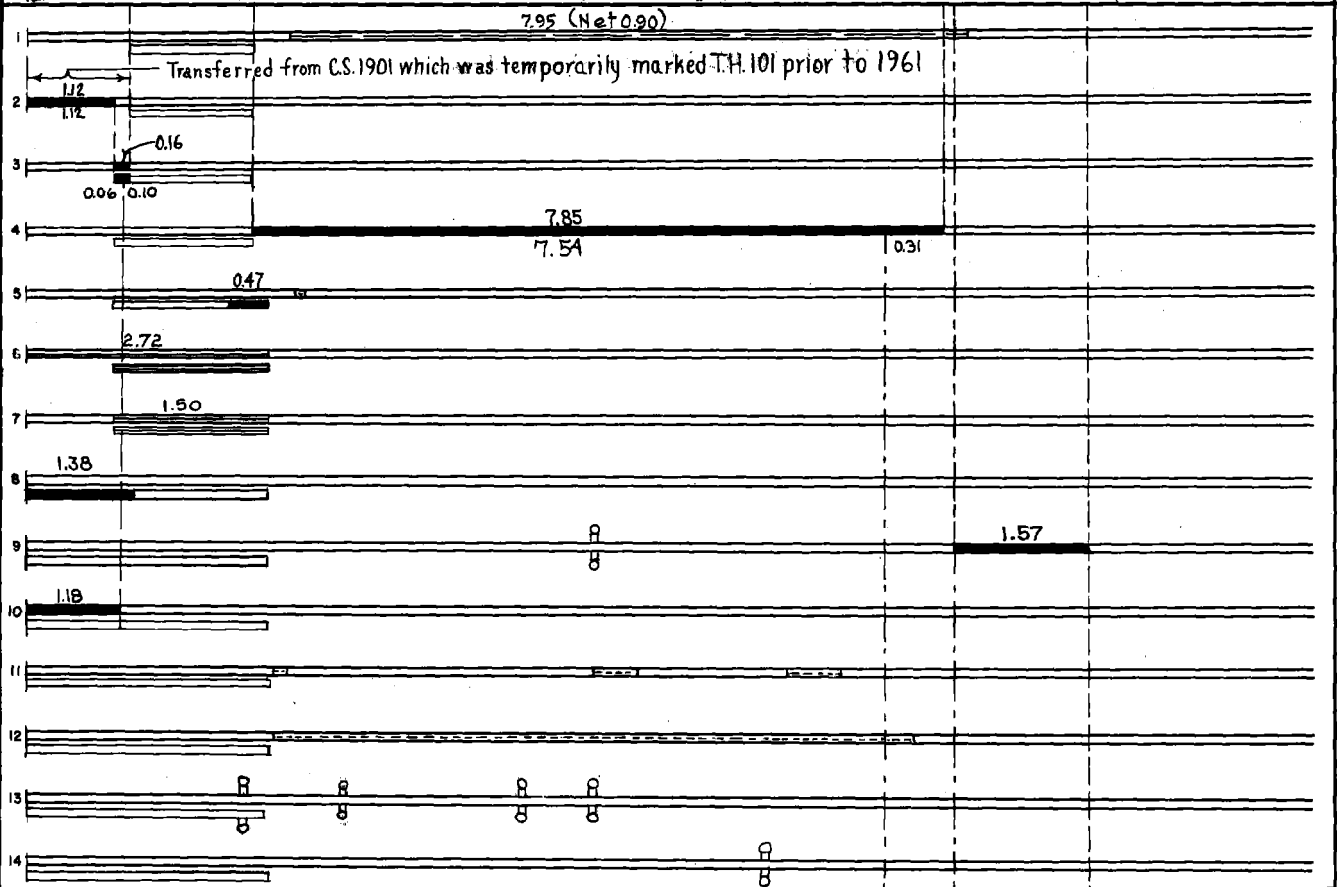
STATE OF MINNESOTA  
DEPARTMENT OF HIGHWAYS  
ROAD LIFE STUDIES  
CONSTRUCTION PROJECT LOG RECORD

CONTROL SECTION 1901  
TRUNK HIGHWAY 13  
COUNTY Dakota  
DISTRICT 5A-9A

LIMITS: W. Co. Line - Jct. T.H. 55 in Mendota Heights



YEAR BUILT	PROJECT NO.	DESCRIPTION			REMARKS
		TYPE	WIDTH	THICKNESS	
M 1960		Bit Surf. Repair	24'		MC-3, 800 tons
C 1957	1901-26 (1)	Spot Gravel Base Spot Pl. Mix Bit. Base Plant Mix Bit.	36' 26' 24'	11" 3" 3"	
C 1960	1901-08 (1)	Grading Base, Gravel Road Mix Bit Asphaltic Conc.	2-54' 7-21' 2-24'		Divided Highway
C 1962	By Maint. Div.	Plant Mix Bit.	24'	1 1/2"	AC-1, 500 Tons
C 1964	1901-35	Grading Subbase Gravel & Bit. Base Asphaltic Concrete	5-2 1/2' 24'	5 1/2" 3 1/2"	On temporary E.B. Roadway Rt. Turn Lane (by Maint.)
M 1964	C	Light Bit Seal			RS-2 & 3K, 1312 Gal. Agg. 135 C.Y.
M 1965	SFEC	Build 7 Turn Lanes Light Bit Seal	Var.		RS-2K, 9936 Gal. FA-1, Agg. 391 C.Y.
C 1966	1901-32	Grading, Select gran. Bit Base Plant Mix Bit.	26' 24'	5" 1 1/2"	Const. of new W.B. Rdwy.
C 1966	By Maint. Div.	Plant Mix Bit.	24'	3"	
C 1968	1901-41	Traffic Signals			
C 1969	1901-40	Asph. Conc. Surf. Pl. Mix. Bit. Shldcs.	24'	1 1/2-3"	On E.B. Rdwy. 3 in. 8' out.
C 1969	1901-42 (3) 1901-47 (3) 1901-49 (4)	Turn Lanes & By Pass Lanes	Var.	3"	
C 1970	1901-55	Turn Lanes & Guard Rails			
C 1971	1901-52 1901-53 1901-54	Traffic Signals Flasher System Traffic Signals			12 <sup>th</sup> Ave Burnsville Nicollet Ave Co. Rd. 30 & T.H. 36
C 1972	1901-60	Traffic Signals			T.H. 13 & Co. Rd. 28



YEARS		TOTAL MILES	UNINCORPORATED		INCORPORATED		RURAL		URBAN	
FROM	TO		RDWY. MI.	BR. MI.	RDWY. MI.	BR. MI.	RDWY. MI.	BR. MI.	RDWY. MI.	BR. MI.

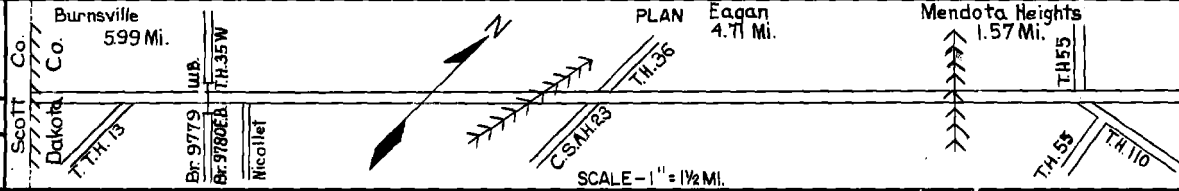
REMARKS: See Sheet No. 1  
(1) See Sheet A1 of 1 for history on this 1.28 Mi. (2) Turn Lanes at Cedar Ave, Black Hawk, Yankee Doodle Rd.  
(3) Bypass Lanes at Minnegaco Rd, McCarthy Rd, Highview Ave. (4) Turn Lane at Co. Rd. 7.

PREPARED BY  
TRAFFIC AND PLANNING DIVISION  
IN COOPERATION WITH  
U.S. DEPARTMENT OF COMMERCE  
BUREAU OF PUBLIC ROADS

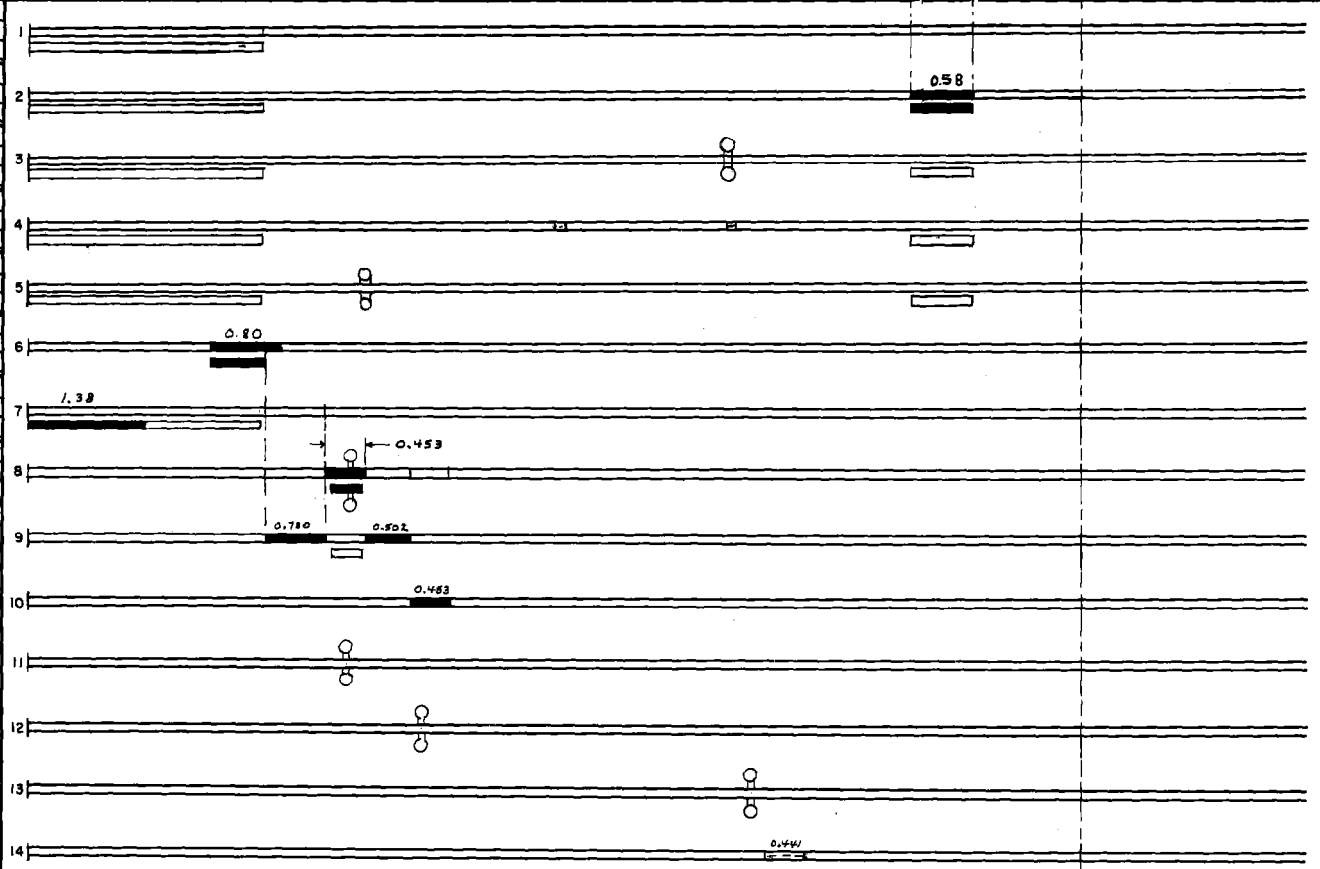
STATE OF MINNESOTA  
DEPARTMENT OF HIGHWAYS  
ROAD LIFE STUDIES  
CONSTRUCTION PROJECT LOG RECORD

CONTROL SECTION 1901  
TRUNK HIGHWAY 13  
COUNTY Dakota  
MAINTENANCE DISTRICT 9A 5A

LIMITS: W.Co. Line - Jct. T.H. 55 in Mendota Heights



YEAR BUILT	PROJECT NO	DESCRIPTION			
		TYPE	WIDTH	THICKNESS	REMARKS
M		Turn Lanes	Var.	Var.	MC-70-1450 Gals. Agg 360 tons
1972	SF	Turn Lanes			Nicollet Ave
C	1901-36	Grading & base			0.14 mi. Widening Only
1974	1-1G 494-4 (88)245	Surface	24' 2"	9"	Divided Highway
C	-71 272	Traffic Signal System			At Jct TH 36 in Egan
	HHS 5407 (1)				
C	-69	Turn Lanes			At Jct Co. Rd 32 & Jct TH 36
1975	HHS-5407 (1)	Channelization			
C	-62	Traffic Signals			At Nicollet Ave
1973	FD75-1(35)	Traffic Signals			
C	1901-85	Grading, Base, Surfacing, Resurf., Traffic Signals	20' 24"	2 1/4"	
1974	1901-67	Turn Lanes, Bit. Shoulders, Bit. Overlay	24'	2 1/4"	W.B. ROADWAY ONLY
	UOTS-1(38)	ON WESTBOUND ROWAY			
C	1901-75	TURN LANES, RESURF., TRAFFIC SIGNALS	30'	2 1/4"	
	HHS-5407 (2)				
C	1901-82	TURN LANES, RESURF., TRAFFIC SIGNALS	24'	2 1/4"	
	HHS-5407 (2)				
C	1901-76	CHANNELIZATION, TURN LANES, RESURF., TEMP. SIGNALS	20' 12"	2 1/4"	
	HHS 5407 (2)				
C	1901-77	TRAFFIC CONTROL SIGNAL SYSTEM			
	HHS-5407 (2)				
C	1901-78	TRAFFIC CONTROL SIGNAL SYSTEM			
	HHS-5407 (2)				
C	1901-79	TRAFFIC CONTROL SIGNAL SYSTEM			
	M5407 (6)				
C	1901-80	CHANNELIZATION AND TURN LANES	20' 12"	2 1/4"	RESURFACING ONLY IN WESTBOUND LANE
	M5407 (6)				



YEARS		TOTAL MILES	UNINCORPORATED		INCORPORATED		RURAL		URBAN	
FROM	TO		RDWY. MI.	BR. MI.	RDWY. MI.	BR. MI.	RDWY. MI.	BR. MI.	RDWY. MI.	BR. MI.

REMARKS: See Sheet No. 1





