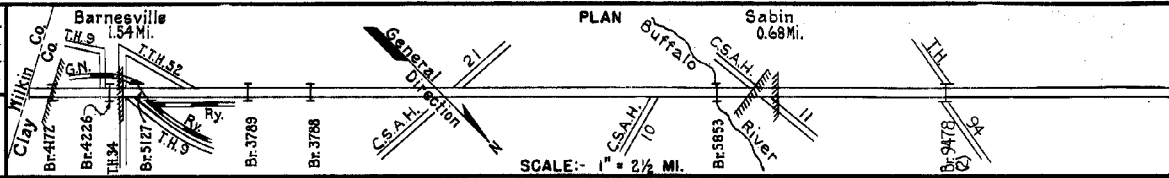


PREPARED BY
HIGHWAY PLANNING SURVEY
IN COOPERATION WITH
U. S. PUBLIC ROADS ADMINISTRATION

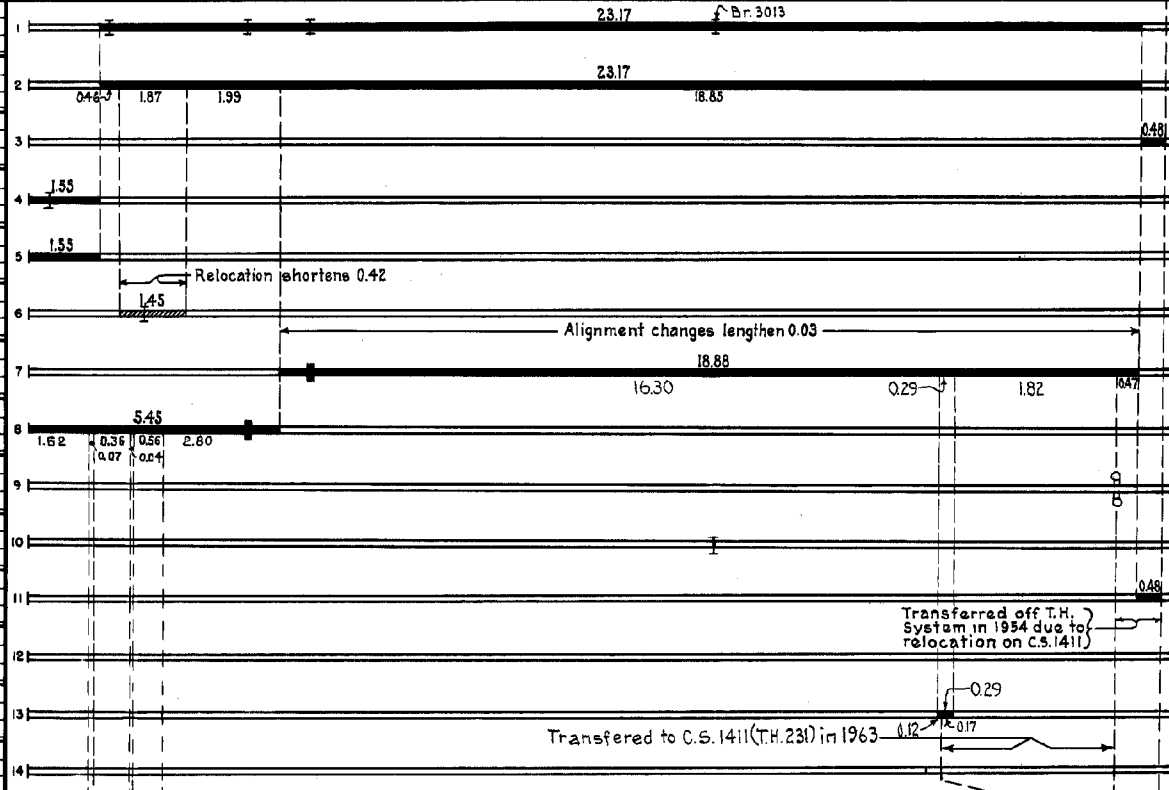
STATE OF MINNESOTA
DEPARTMENT OF HIGHWAYS
ROAD LIFE STUDIES
CONSTRUCTION PROJECT LOG RECORD

CONTROL SECTION 1405
TRUNK HIGHWAY 52
COUNTY Clay
DISTRICT 4A

LIMITS: South Co. Line - Jct. T.H. 94



YEAR BUILT	PROJECT N ^o	DESCRIPTION			CODE N ^o
		TYPE	WIDTH	THICKNESS	
1924	52-64-24-A,B&C	Grading Br.4226, 3788 & 3013	30' 27' 20'		
1925	52-64-24-A,B&C	Gravel	24'	3 1/2"	
1925	52-64-2	Concrete	NW		
1925	52-64-22C	Grading Br.4172	30' 27'		
1926	52-64-22C	Gravel	24'	3"	
1931	52-64-24C	Grading Gravel Br.5127	40' 40' 28'	3"	
1931	52-64-24A	Concrete Br. 3788	20' 27'	9-7-9	
1932	52-64-22C	Concrete (1) Br. 3789	20' 27'	9-7-9	
1938	52-64-24B	Crossing Signal			
1939	1405-02	Concrete (Bridge Approach Slabs) Br. 5853	20' 50'	9-7-9	
1951	A.F.E. 24	Bit. Surfacing Plant Mix Bit.	30'x4'	3"	
1962	1480-06	Grading, Sub-base Gravel Base P.C. Concrete	43' 24'	3" 8"	
1964	1405-09	Drainage Alteration			



YEARS FROM	YEARS TO	TOTAL MILES	UNINCORPORATED		INCORPORATED		RURAL		URBAN	
			RDWY. MI.	BR. MI.	RDWY. MI.	BR. MI.	RDWY. MI.	BR. MI.	RDWY. MI.	BR. MI.
1925	1930	25.70	20.60	0.07	4.52	0.01	21.24	0.07	3.68	0.01
1931	1936	24.81	20.70	0.07	4.03	0.01	21.34	0.07	3.39	0.01
1939	1953	24.61	20.70	0.03	4.07	0.01	21.38	0.03	3.30	0.01
1954	1961	23.86	20.70	0.03	3.12	0.01	21.38	0.03	2.44	0.01
1962	1962	23.86	20.65	0.08	3.12	0.01	21.33	0.08	2.44	0.01
1963	1969	21.87	19.56	0.08	2.22	0.01	20.25	0.08	1.53	0.01
1970	1970	21.31	19.44	0.08	1.78	0.01	20.12	0.08	1.10	0.01

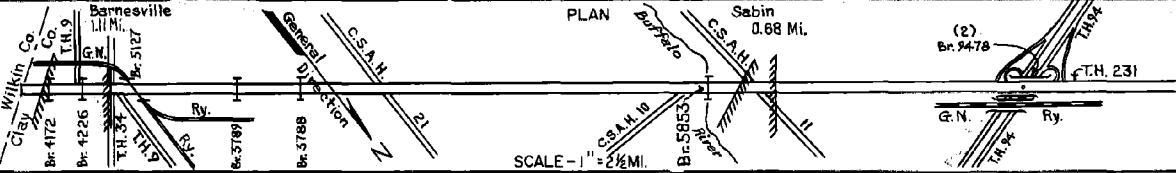
REMARKS: Layout is to scale as of 1931
 (1) 0.25 Mi. Widened to 70' by Village - Date unknown (2) Br. 9478 is a 299' B.S., 30' rdwy. T.H. 52 over T.H. 94, see C.S. 1480

PREPARED BY
TRAFFIC AND PLANNING DIVISION
IN COOPERATION WITH
U.S. DEPARTMENT OF COMMERCE
BUREAU OF PUBLIC ROADS

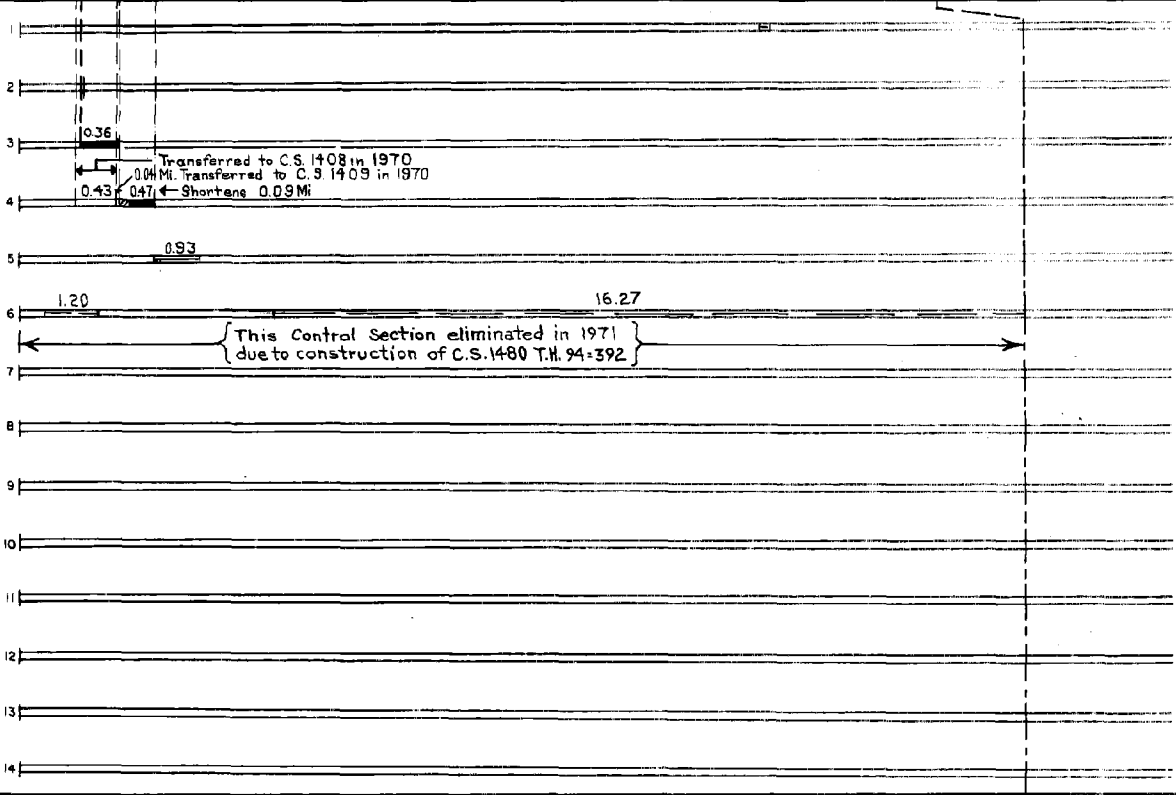
STATE OF MINNESOTA
DEPARTMENT OF HIGHWAYS
ROAD LIFE STUDIES
CONSTRUCTION PROJECT LOG RECORD

CONTROL SECTION 1405
TRUNK HIGHWAY 52
COUNTY Clay
DISTRICT 4A4

LIMITS S.Co. Line - Jct. T.H. 94



YEAR BUILT	PROJECT NO.	DESCRIPTION			REMARKS
		TYPE	WIDTH	THICKNESS	
M 1967	SF	Shoulder Repair Excavation and back-fill	6'		Stabilized Gravel 610 Tons
C 1970	1405-15	Removes Br. 4226 R.C.P. Arch Culvert			Built 1924 Line 101 154'x104' 15° Skew
C 1970	1405-15	Grading Pl. Mix Bit	18'	9-7-9	Widening 12' Rt. & Lt. Old P.C. Conc. in p.
C 1970	1405-16	Grading & Bit Overlay	22'	3"	Const. 0.07 Mi. 0.04 Mi.
M 1970	SF	Bit Overlay Gravel Shoulders	20'	1 1/2" 10"	Tack, 324 Gal. Agg. 2050 Tons Shoulders Raised
M 1971	SF	Joint Seal			



YEARS FROM TO	TOTAL MILES	UNINCORPORATED		INCORPORATED		RURAL		URBAN	
		RDWY. MI.	BR. MI.	RDWY. MI.	BR. MI.	RDWY. MI.	BR. MI.	RDWY. MI.	BR. MI.
1971	0.00	0.00	0.00	0.00	0.00	0.00	0.00	0.00	0.00

REMARKS: See sheet No. 1.