

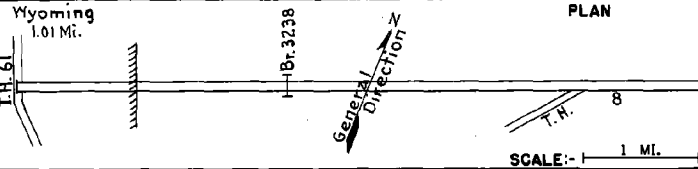
PREPARED BY
HIGHWAY PLANNING SURVEY
IN COOPERATION WITH
U. S. PUBLIC ROADS ADMINISTRATION

STATE OF MINNESOTA
DEPARTMENT OF HIGHWAYS
ROAD LIFE STUDIES
CONSTRUCTION PROJECT LOG RECORD

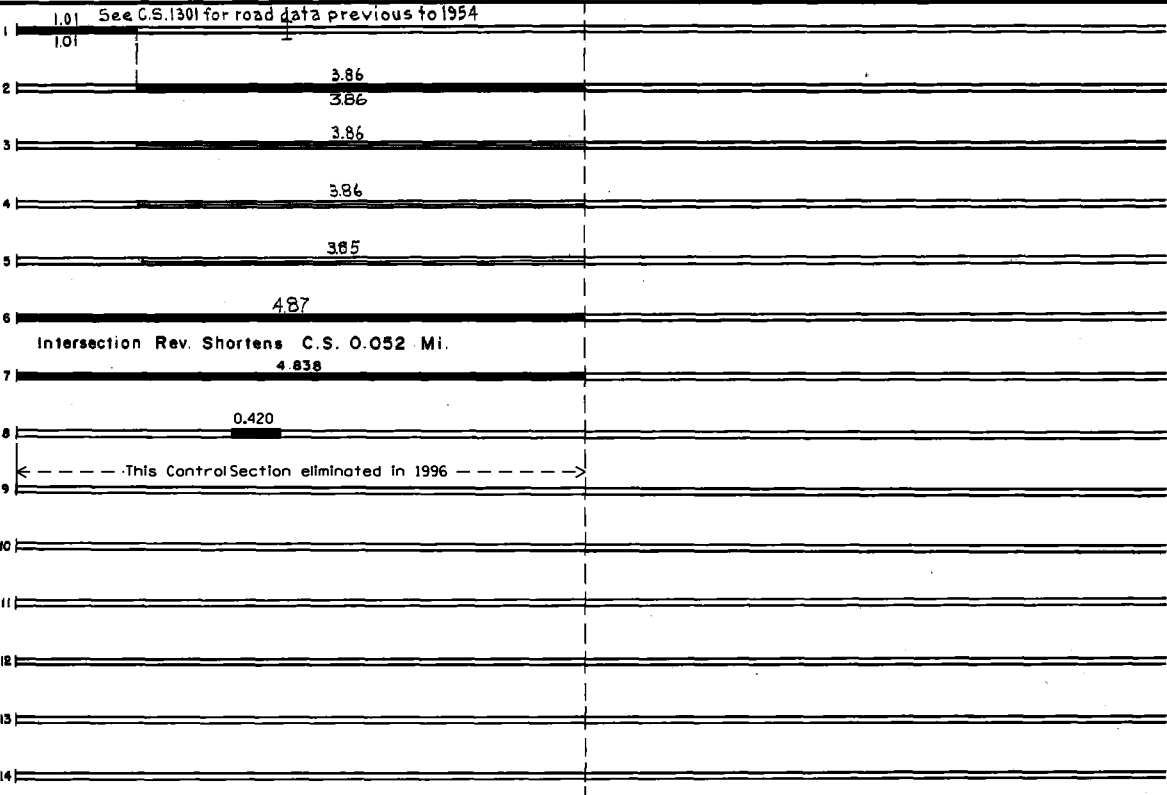
CONTROL SECTION 1312
TRUNK HIGHWAY 98
COUNTY Chisago
DISTRICT Metro

LIMITS: Jct. T.H. 61 in Wyoming - Jct. T.H. 8

Ref. Pt. 000+00.034 - 004+00.870



YEAR BUILT	PROJECT N ^o	DESCRIPTION			CODE N ^o
		TYPE	WIDTH	THICKNESS	
1926	8-46-23	Grading	32'		1
1922		Concrete	18'		
		Br. 3238	21'		20' C.S.
C	1949	Plant Mix Bit.	8'	1 1/4" added	2
M	1936	A. P. E. 605	18'		3
M	1960	Light Bit Seal	18'		4
M	1964	C	Light Bit Seal	24'	5
C	1969	1312-02	Pl. Mix. Bit. Surf.	10'	6
C	1985	1312-07	Gravel Shldrs.	1 1/2-2 1/2'	7
C	1992	1312-10	Grading, Bit. Surfacing, Edge Drains	24'	8



YEARS FROM	TOTAL MILES TO	UNINCORPORATED		INCORPORATED		RURAL		URBAN	
		RDWY. MI.	BR. MI.	RDWY. MI.	BR. MI.	RDWY. MI.	BR. MI.	RDWY. MI.	BR. MI.
1954	4.87	3.85	0.01	1.01	0.00	4.86	0.01	0.00	0.00

REMARKS: Layout is to scale as of 1954