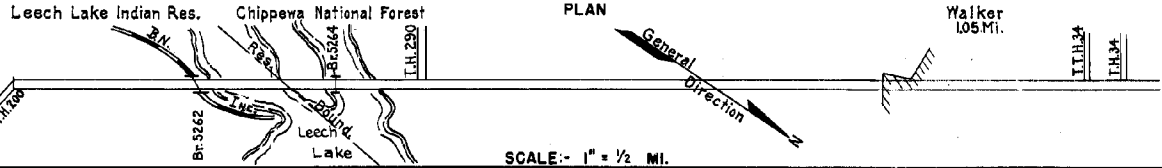


PREPARED BY
HIGHWAY PLANNING SURVEY
IN COOPERATION WITH
U. S. PUBLIC ROADS ADMINISTRATION

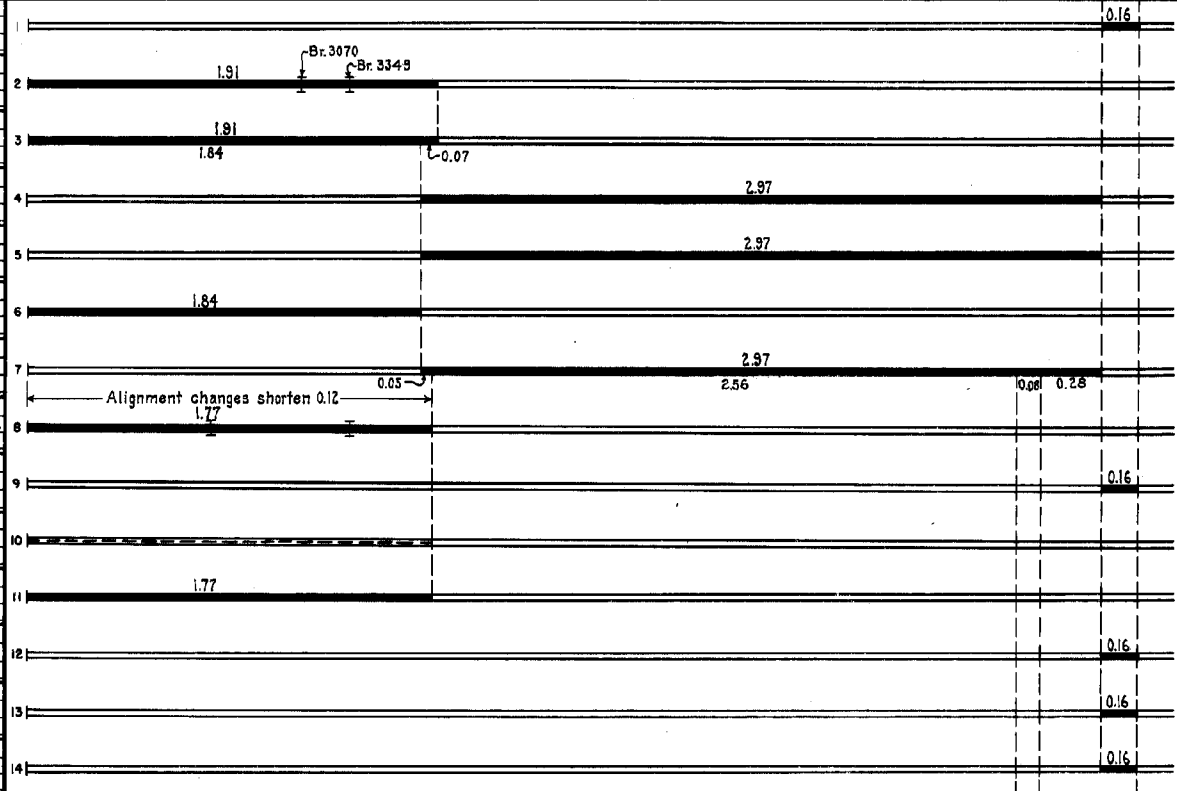
STATE OF MINNESOTA
DEPARTMENT OF HIGHWAYS
ROAD LIFE STUDIES
CONSTRUCTION PROJECT LOG RECORD

CONTROL SECTION 1119
TRUNK HIGHWAY 371
COUNTY Cass
DISTRICT 243A

LIMITS: South Jct. T.H. 200 - Jct. T.H. 34 in Walker



YEAR BUILT	PROJECT N°	DESCRIPTION			CODE N° DIST.
		TYPE	WIDTH	THICKNESS	
		Gravel	22'	2"	No Record of Constr.
1920	371-34-1	Grading Br. N° 3070 Br. N° 3349	24' 18'		Trans from T.H. 34 in 1926 710 W.P.T. 780 N.P.T.
1923	371-34-2B	Gravel	16'	2 1/4"	700 C.Y./Mile. Trans from T.H. N° 34 in 1926.
1925	371-34-25	Grading	30'		Not used until 1926.
1926	371-34-25	Gravel	30'	2 1/2"	1300 C.Y./Mile.
	(i)				
1931	371-34-28	Oil Tr. Gravel	20'	1"	17453 Gal./Mile. Maint. Dept.
	(i)				
1931	371-34-25	Oil Tr. Gravel	2630'	1"	17453 Gal./Mile. Maint. Dept.
1933	371-34-28	Grading Br. N° 3262 Br. N° 5264	337' 27'		B.S. & W.P.T.-U.P. 90 B.S.
1933	371-19-25B	Grading	37'		
1934	371-34-28	Roadside Develop.			
	(i)				
1934	371-34-28	Oil Tr. Gravel	26'	1"	17554 Gal./Mile. Maint. Dept.
	(i)				
1934	371-19-25B	Gravel	32'	3/4"	528 C.Y./Mile. Maint. Dept.
1935	371-19-25B	Gravel	37'	1"	800 C.Y./Mile.
	(i)				
1935	371-19-25B	Oil Tr. Gravel	26'	1"	12720 Gal./Mile. Maint. Dept.



YEARS		TOTAL MILES	UNINCORPORATED		INCORPORATED		RURAL		URBAN	
FROM	TO		RDWY. MI.	BR. MI.	RDWY. MI.	BR. MI.	RDWY. MI.	BR. MI.	RDWY. MI.	BR. MI.
1921	1925	0.16	0.16	0.00	0.00	0.16	0.00	0.00	0.00	
1926	1932	4.97	3.53	0.28	1.16	4.69	0.28	0.00	0.00	
1933	1950	4.85	3.67	0.02	1.16	4.83	0.02	0.00	0.00	
1951	1955	4.85	3.67	0.02	1.16	3.67	0.02	1.16	0.00	
1956		4.61	3.54	0.02	1.05	3.54	0.02	1.05	0.00	

REMARKS: Layout is to scale as of 1933

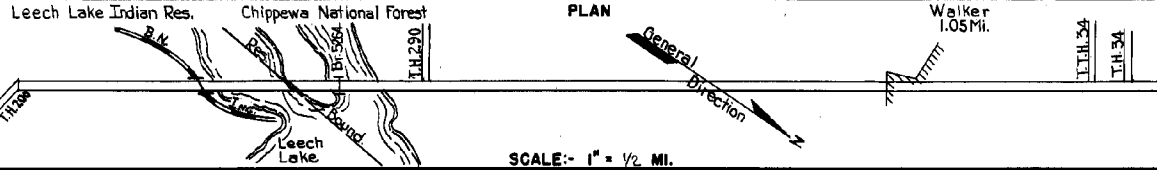
(i) This work not done under these project numbers but lies within the limits of these projects

PREPARED BY
HIGHWAY PLANNING SURVEY
IN COOPERATION WITH
U. S. PUBLIC ROADS ADMINISTRATION

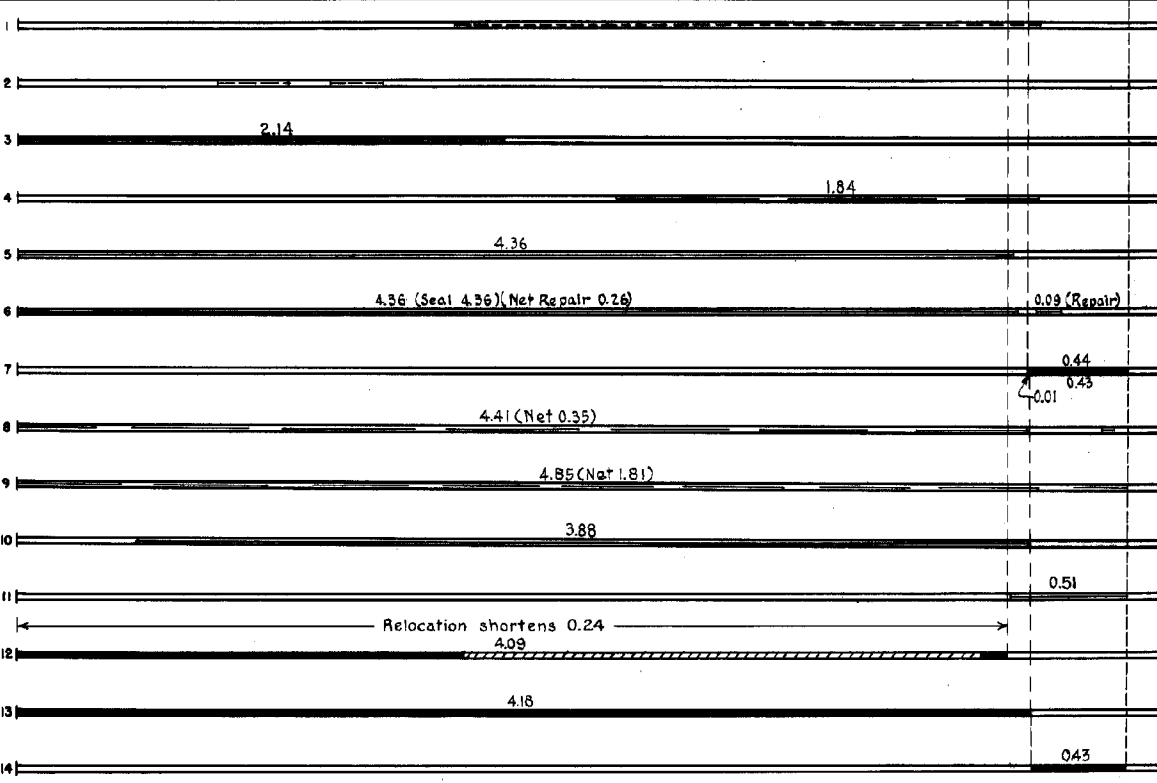
STATE OF MINNESOTA
DEPARTMENT OF HIGHWAYS
ROAD LIFE STUDIES
CONSTRUCTION PROJECT LOG RECORD

CONTROL SECTION 1119
TRUNK HIGHWAY 371
COUNTY Cass
DISTRICT 23A

LIMITS: S. Jct. T.H. 200 - Jct. T.H. 34 in Walker



YEAR BUILT	PROJECT N°	DESCRIPTION			CODE N° DIST.
		TYPE	WIDTH	THICKNESS	
1937	371-34-25 1119-01	Roadside Develop			
1938	A.F.E. 5	Guard Rail			
M					
1942	A.F.E. 5	Bit. Seal Coat	24'		RT-6, 2088 Gal./Mi. Agg. 238 C.Y./Mi. Maint. Dept.
M					
1943	A.F.E. 4	Spot Treat. Bit. Surf. Repair	24'		MG-2, 3003 Gal./Mi. Maint. Dept.
M					
1944	A.F.E. 4	Bit. Surf. Repair	24'		MG-2, 742 Gal./Mi. Grav. 340 C.Y./Mi. Maint. Div.
M					
1950	A.F.E. 4	Spot Treat. Bit. Surf. Repair Bit. Fog Seal	24'		RC-1 & SC-B 9226 Gal. Agg. 324 C.Y.
C					
1951	1119-07	Gravel Base Mixed Bit.	58'	9" 2"	
M					
1952	A.F.E. 4 A.F.E. 28	Spot Bit. Surf. Repair Repair Slopes, Storm Gutter, etc. (473-480)	24'		SC-3, 2844 Gal. Agg. 148 C.Y.
M					
1953	A.F.E. 604	Spot Treat. Bit. Surf. Repair	24'		MG-2, 21147 Gal. Agg. 1613 Tons
M					
1954	A.F.E. 604	Bit. Surf. Repair	24'		SC-3 & SC-3 44507 Gal. Agg. 3822 Tons
M					
1955	A.F.E. 605	Light Bit. Seal	38'		RC-2, 2200 Gal. Agg. 90 C.Y.
C					
1956	1119-09	Grading Bit. Stab. Base Mixed Bit.	40' 40' 26'	6" 1"	On 3'-12" Sand-Grav. Sub-base 1856
C					
1958	1118-11	Spot Subgr. Corr. Plant Mix Bit.	24'	3" added	
C					
1962	1119-13	Plant Mix Bit.	58'	1 1/2"	741



YEARS FROM	TOTAL MILES TO	UNINCORPORATED		INCORPORATED		RURAL		URBAN	
		RDWY. MI.	BR. MI.	RDWY. MI.	BR. MI.	RDWY. MI.	BR. MI.	RDWY. MI.	BR. MI.

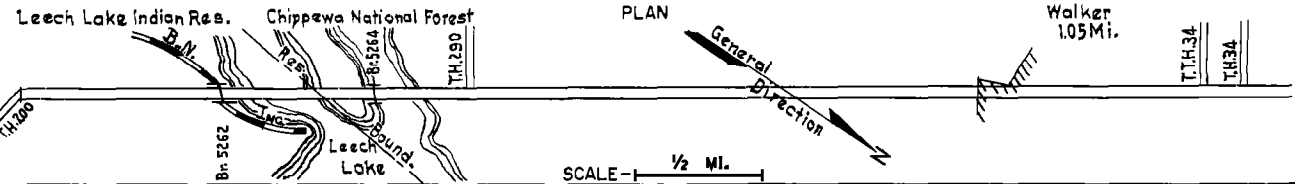
REMARKS: See Sheet No. 1.

FORM P.L. 77 REV. 9-58
 PREPARED BY
 TRAFFIC AND PLANNING DIVISION
 IN COOPERATION WITH
 U.S. DEPARTMENT OF COMMERCE
 BUREAU OF PUBLIC ROADS

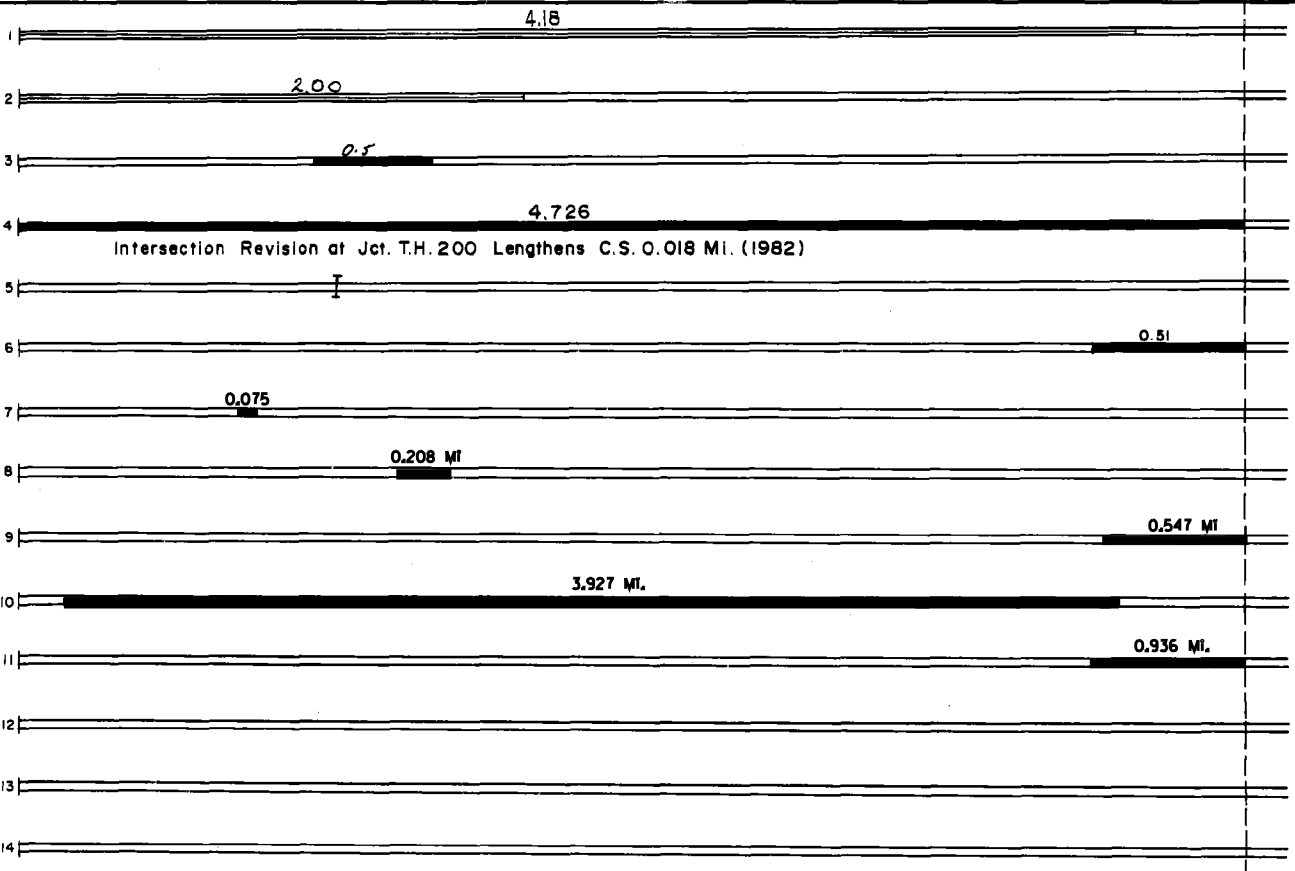
STATE OF MINNESOTA
 DEPARTMENT OF HIGHWAYS
 ROAD LIFE STUDIES
 CONSTRUCTION PROJECT LOG RECORD

CONTROL SECTION 1119
 TRUNK HIGHWAY 371
 COUNTY Cass
 DISTRICT 3A(2A)

LIMITS South Jct. T.H. 200 - Jct. T.H. 34 in Walker
 Ref. Pt. 086+00.810 - 091+00.490



Dist No.	YEAR BUILT	PROJECT NO	DESCRIPTION			REMARKS
			TYPE	WIDTH	THICKNESS	
	M 1963	C	Light Bit. Seal	25'		RS-2K, 8789 Gal. Agg. 350 C.Y.
1879	M 1979	SF	SHOULDER REPAIR	8'		568 C.Y.
2080	M 1980		Bit. Surfacing		1 1/2"	127 Ton AC
	C 1982	1119-21	Bit. Surfacing Bit. Shoulders	24'	2 1/2"	
	C 1983	1119-11008	Br. 11008 Repl. Br. 5268			96' Prefab. Timber on Side Rd.
	M 1983	SF	Milling & Bit. Surfacing	Var.	3/4"	Contract No 4023
	C 1987	1119-23	Bit. Shouldering	9'	1 1/2"	Spec. 2331
	C 1993	1119-24	Bit. Overlay Bit. Shoulder Agg. Base	24' 10' 2', 12'	5" 1 1/2" Var.	Spec. 2331, 2341 Spec. 2331 Class 6 (On Shoulder)
	C 1996	1119-28	Bit. Milling Bit. Overlay	36' 36'	3" 1 1/2"	Spec. 2341
	S 2003	1119-32	Bit. Milling Bit. Overlay	24' 24'	3" 2"	Spec. 2360
	S 2008	1119-35	Milling Bit. Overlay	var. var.	2" 2"	Spec. 2360



YEARS		TOTAL MILES	UNINCORPORATED		INCORPORATED		RURAL		URBAN	
FROM	TO		RDWY. MI.	BR. MI.	RDWY. MI.	BR. MI.	RDWY. MI.	BR. MI.	RDWY. MI.	BR. MI.

REMARKS: See Sheet No. 1
 For Other Projects See Dist. No's: 1780