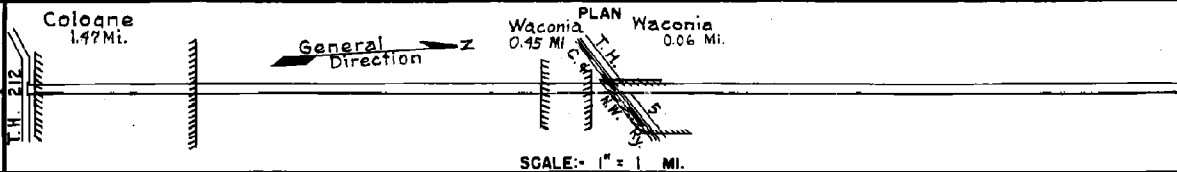


PREPARED BY
HIGHWAY PLANNING SURVEY
IN COOPERATION WITH
U.S. PUBLIC ROADS ADMINISTRATION

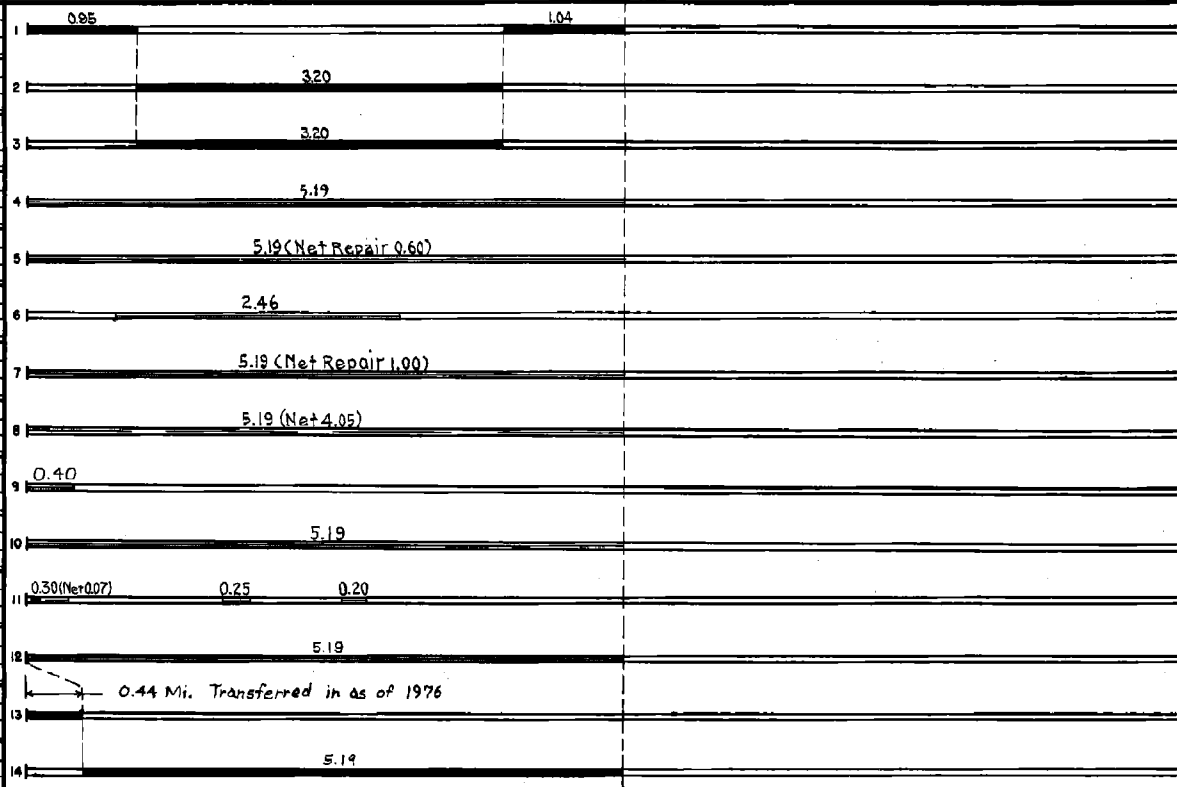
STATE OF MINNESOTA
DEPARTMENT OF HIGHWAYS
ROAD LIFE STUDIES
CONSTRUCTION PROJECT LOG RECORD

CONTROL SECTION 1014
TRUNK HIGHWAY 204
COUNTY Carver
DISTRICT 5A

LIMITS: Jct. T.H. 212 in Cologne - Jct. T.H. 9 at Waconia



YEAR BUILT	PROJECT N ^o	DESCRIPTION			CODE N ^o
		TYPE	WIDTH	THICKNESS	
		Mixed Bit	24'		No Record of Const. Added in 1949
		Gravel	24'		No Record of Const. Added in 1949
C	1949 A.F.E. 31	Bit Surfacing Mixed Bit (Mixed Prime)	24'	1"	662,221.79 Gal. Agg. 29 C.Y.
M	1950 A.F.E. 4	Bit Surf. Repair	24'		SC3 48,239 Gal. Agg. 2717 C.Y.
M	1952 A.F.E. 4 A.F.E. 5	Spot Treat Bit Surf. Repair Light Bit Seal (5.19 Mi)	22'	22'	RC2, SC2, 1,491.11 Gal. Agg. 587 C.Y.
M	1953 A.F.E. 604	Bit Surf. Repair	24'		MC2, SC3, 20,796 Gal. Agg. 1720 Tons
M	1954 A.F.E. 604 A.F.E. 605	Spot Treat Bit Surf. Repair Light Bit Seal (5.19 Mi)	22'	24'	SC3, RC2, 1,601.6 Gal. Agg. 700 Tons & 27 C.Y.
M	1957 A.F.E. 604	Spot Treat Bit Surf. Repair	24'		SC3 37,589 Gal. Agg. 2842 Tons
M	1958 A.F.E. 604	Bit Surf. Repair	24'		SC3, RC2, 4,081 Gal. Agg. 315 Tons
M	1959 A.F.E. 605	Light Bit Seal	24'		RC-2, 8,902 Gal. Agg. 434 Tons
M	1961	Spot Treat Bit Surf. Repair	24'		SC-34 MC-2, 4727 Gal. Repair & 500 Gal. for Tack
M	1965 c	Seal Coat	26'4"		Bit Mat# 8003 Gal. Agg. 411 Tons
C	1974 1014-03	Pt. Mix Bit. Surf.	24'	2 1/2"	



FROM	TO	TOTAL MILES	UNINCORPORATED		INCORPORATED		RURAL		URBAN	
			RDWY. MI.	BR. MI.	RDWY. MI.	BR. MI.	RDWY. MI.	BR. MI.	RDWY. MI.	BR. MI.
1949	1950	5.19	4.98	0.00	0.21	0.00	5.19	0.00	0.00	0.00
1951	1958	5.19	4.38	0.00	0.81	0.00	5.19	0.00	0.00	0.00
1959	1959	5.19	4.32	0.00	0.87	0.00	5.13	0.00	0.06	0.00
1960	1975	5.19	4.92	0.00	0.27	0.00	5.13	0.00	0.06	0.00
1976		5.63	3.65		1.98		6.72		0.51	

REMARKS: Layout is to scale as of 1949

6-76

