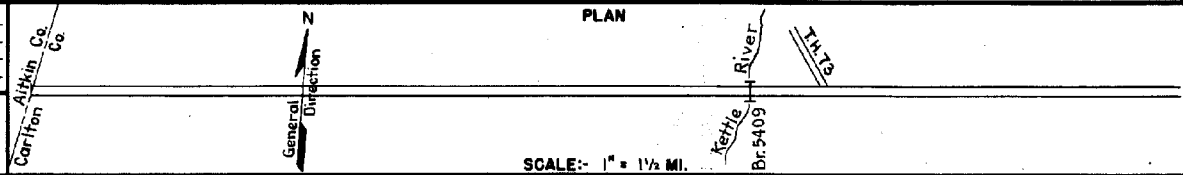


PREPARED BY  
HIGHWAY PLANNING SURVEY  
IN COOPERATION WITH  
U.S. PUBLIC ROADS ADMINISTRATION

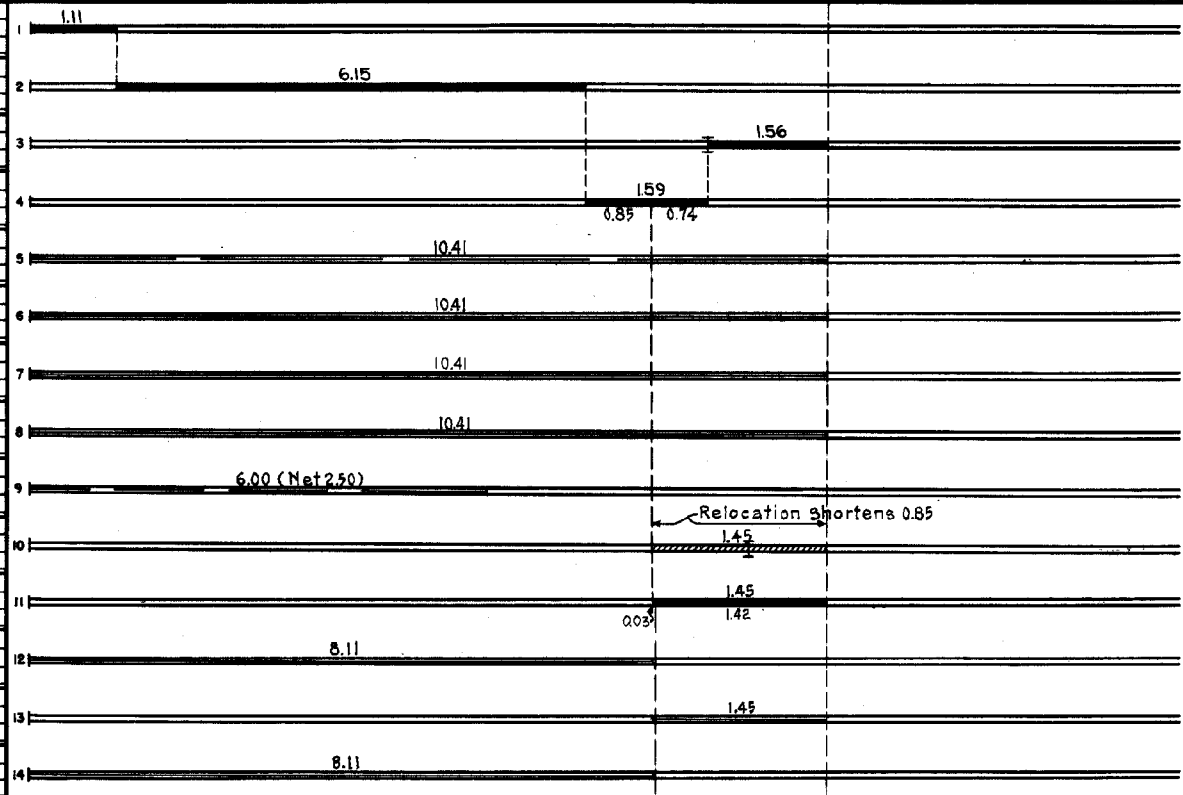
STATE OF MINNESOTA  
DEPARTMENT OF HIGHWAYS  
ROAD LIFE STUDIES  
CONSTRUCTION PROJECT LOG RECORD

CONTROL SECTION 0902  
TRUNK HIGHWAY 27  
COUNTY Carlton  
DISTRICT 1A

LIMITS: W. Co. Line - Jct. T.H. 73



YEAR BUILT	PROJECT N <sup>o</sup>	DESCRIPTION				CODE N <sup>o</sup>
		TYPE	WIDTH	THICK-NESS	REMARKS	
		Gravel	25'	1"	No Record of Constr.	
					Added in 1934.	
1922		Gravel	25'	2 1/2"	Co. Job 2203. 1200 C.Y. / Mile. Added in 1934.	
1923		Gravel	25'	2 1/2"	Co. Job 2309 Added in 1934. 1200 C.Y. / Mi. 138' Wood H.T.	
1924		Gravel	25'	2 1/2"	Co. Job 2401. 1200 C.Y. / Mile. Added in 1934.	
M	1941 A.F.E. 53	Frost Boil Corr.			Grav. 604 C.Y. / Mi. Maint. Dept.	
M	1941 A.F.E. 27	Reshape Ditch & Re-graveling			4 1/2 C.Y. / Mi. Maint. Dept.	
M	1944 A.F.E. 6	Grav. Resurfacing			543 C.Y. / Mi. Maint. Div.	
M	1946 A.F.E. 6	Grav. Resurfacing			5490 C.Y.	
M	1952 A.F.E. 12	Grav. Resurfacing	24'		1252 C.Y.	
C	1952 0902-02	Grading	28'			
	0902-04 & 05	Gravel Base	28'	3"	On 9" Sand Gr. Sub-base 225' D.G. & 100' D.T.	
C	1953 A.F.E. 817	Mixed Bit. Fog Seal	24'	1"	Agg. from road 5C-3, 14907 Gal. 5C-1, 1734 Gal.	
M	A.F.E. 606	Grav. Resurfacing			1344 Tons	
1954	A.F.E. 828	Side Ditch Clean- ing & Drainage Corr.				
M	1955 A.F.E. 821	Bit. Surf. Repair	24'		M/G-2, 13797 Gal. Agg. 1008 Tons	
M	1955 A.F.E. 606	Spot Grav. Lifts (Net 0.54 Mi.)	27'		Grav. Lifts 1266 Tons	
		Grav. Resurfacing	28'		Grav. Surf. 3998 Tons	



YEARS FROM	TO	TOTAL MILES	UNINCORPORATED		INCORPORATED		RURAL		URBAN	
			RDWY. MI.	BR. MI.	RDWY. MI.	BR. MI.	RDWY. MI.	BR. MI.	RDWY. MI.	BR. MI.
1934	1951	10.41	10.38	0.03	0.00	0.00	10.38	0.03	0.00	0.00
1952	1959	9.56	9.53	0.03	0.00	0.00	9.53	0.03	0.00	0.00
1960		9.41	9.38	0.03	0.00	0.00	9.38	0.03	0.00	0.00

REMARKS: Layout is to scale as of 1934

PREPARED BY  
HIGHWAY PLANNING SURVEY  
IN COOPERATION WITH  
U.S. PUBLIC ROADS ADMINISTRATION

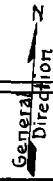
STATE OF MINNESOTA  
DEPARTMENT OF HIGHWAYS  
ROAD LIFE STUDIES  
CONSTRUCTION PROJECT LOG RECORD

CONTROL SECTION 0902  
TRUNK HIGHWAY 27  
COUNTY Carlton  
DISTRICT 1A

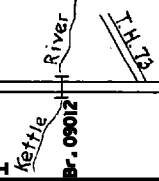
LIMITS: W. Co. Line - Jct. T.H. 73

Ref. Pt. 231+00.365 - 240+00.765

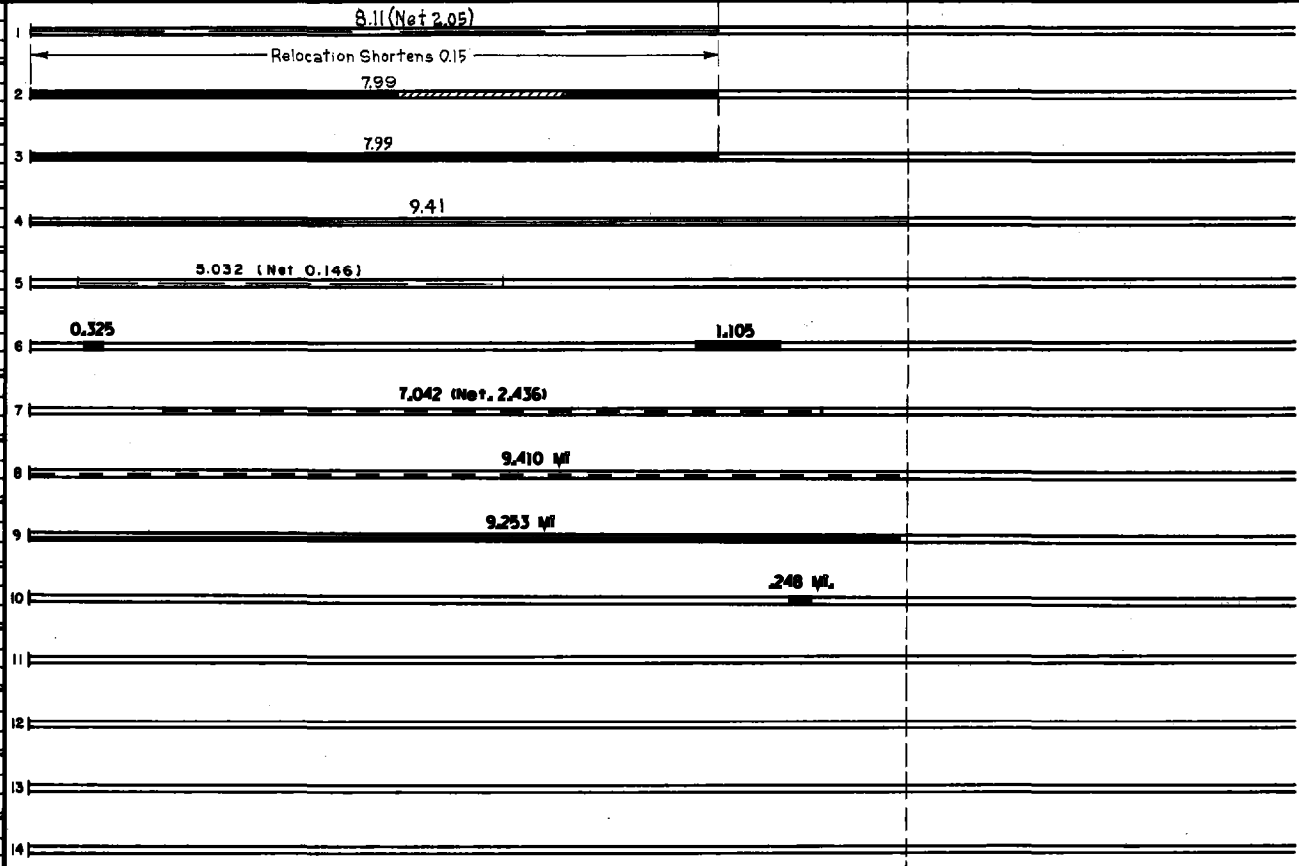
Carlton Co.  
Aitkin Co.



PLAN



YEAR BUILT	PROJECT N <sup>o</sup>	DESCRIPTION			CODE N <sup>o</sup>
		TYPE	WIDTH	THICKNESS	
M 1926	A.F.E. 606	Grav. Resurfacing (Spots)	24'		1
C 1960	0902-06	Grading Gravel	46'	1 1/2"	2
C 1961	0902-07	Sub-base Road Mix Bit. Base Plant Mix Bit.	41' 24'	9" 1" 2"	3
M 1964	C	Light Bit. Seal	25'		4
M 1984	SF	Spot Bit. Overlay	24'	1-2"	5
M 1985	SF	Bit. Overlay	24'	1 1/2"	6
M 1987	SF	Spot Overlay	24'	1 1/2"	7
C 1998	0902-09	Subgrade Correct.			8
C 1999	0902-10	Bit. Overlay	24'	1 1/2"	9
S 2005	0902-11	Grading Bit. Surfacing Br. 09012	24'	5 1/2"	10
					11
					12
					13
					14



YEARS		TOTAL MILES	UNINCORPORATED		INCORPORATED		RURAL		URBAN	
FROM	TO		RDWY. MI.	BR. MI.	RDWY. MI.	BR. MI.	RDWY. MI.	BR. MI.	RDWY. MI.	BR. MI.

REMARKS: See Sheet No. 1