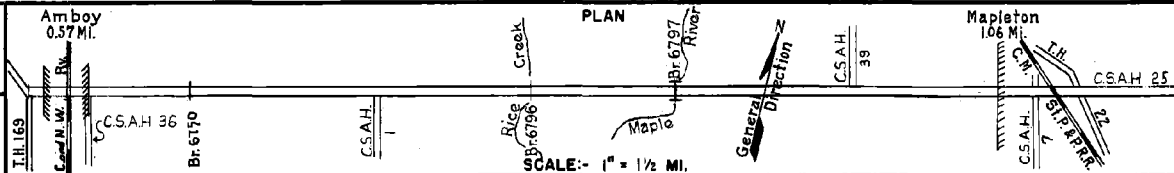


PREPARED BY  
HIGHWAY PLANNING SURVEY  
IN COOPERATION WITH  
U. S. PUBLIC ROADS ADMINISTRATION

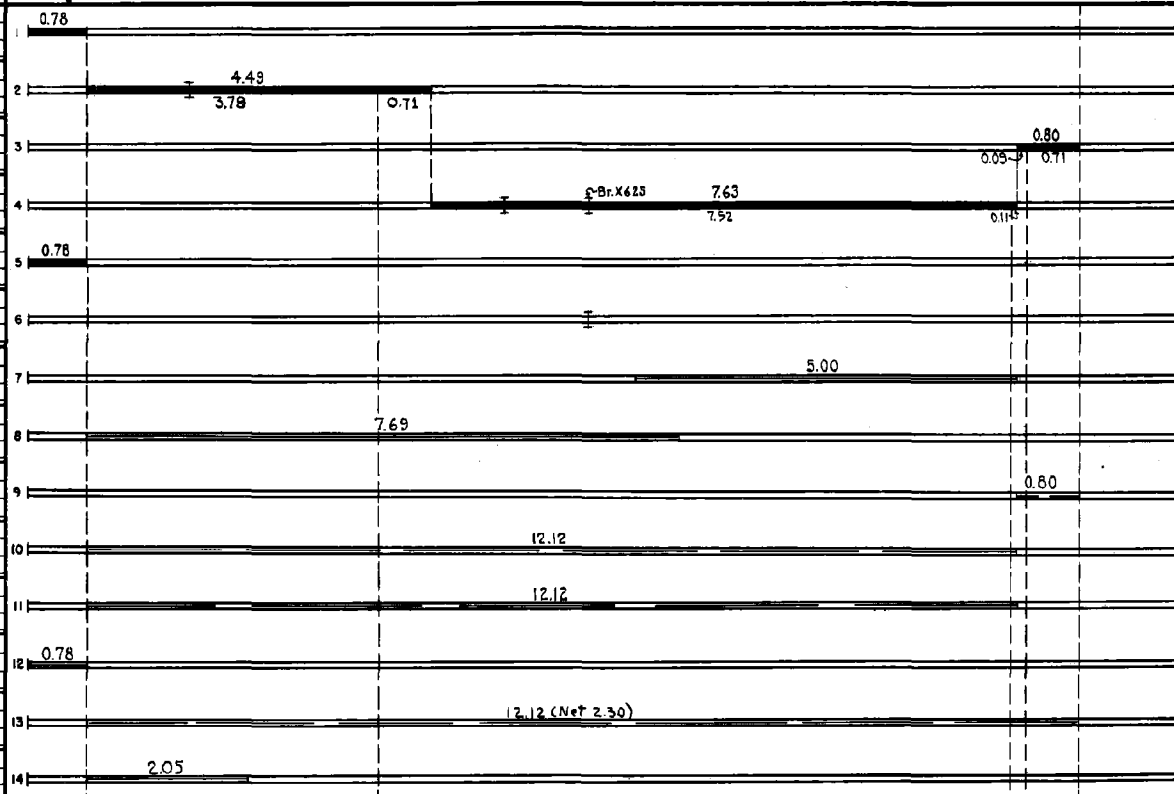
STATE OF MINNESOTA  
DEPARTMENT OF HIGHWAYS  
ROAD LIFE STUDIES  
CONSTRUCTION PROJECT LOG RECORD

CONTROL SECTION 0706  
TRUNK HIGHWAY 30  
COUNTY Blue Earth  
DISTRICT 7A

LIMITS: South Jct. T.H. 169 near Amboy - North Jct. T.H. 22 in Mapleton



YEAR BUILT	PROJECT N°	DESCRIPTION			CODE N°
		TYPE	WIDTH	THICKNESS	
		Gravel	24'	2"	No Record of Constr.
					Added in 1934.
		Gravel	24'	2"	No Record of Constr.
		Br. N° 3213	23'		Added in 1934.
					20 C.S.
		Oil Tr. Gravel	25'	1 1/2"	No Record of Constr.
					Added in 1934.
1922		Gravel	24'	2 1/2"	Co. Job N° 2213.
		Br. N° 3773	19'		Added in 1934.
		Br. N° X 625	14'		30' C.D.G. & 75' I.T.
1936		Oil Tr. Gravel	VW	1 1/2"	Maint. Dept.
		Stab. Gravel Base	VW	4"	34670 Gal./Mile. With Ca Cl <sub>2</sub> & Clay.
1936		Br. N° 3094	24'		70' D.P.G. Built by Br. Maint.
M	1940 A.F.E. 37	Regravelling			394 Tons/Mile. Maint. Dept.
M	1941 A.F.E. 6	Regravelling			484 C.Y./Mile. Maint. Dept.
M	1942 A.F.E. 4	Spot Treat. Bit. Surf. Repair			MG 3-7625 Gal./Mi. Grav. 164 C.Y./Mi. Maint. Dept.
M	1943 A.F.E. 17 A.F.E. 6	Gravel Lifts & Grav. Resurface (Spots)			102 C.Y./Mi. Maint. Dept.
M	1944 A.F.E. 6	Grav. Resurfacing (Spots)			231 C.Y./Mi. Maint. Div.
M	1944 A.F.E. 5	Bit. Seal Coat	Var.		RG 3, 9896 Gal./Mi. Agg. 231 C.Y./Mi. Maint. Div.
M	1946 A.F.E. 6	Grav. Resurfacing (Spots)			425 C.Y.
M	1947 A.F.E. 6	Grav. Resurfacing			1155 Tons



YEARS		TOTAL MILES	UNINCORPORATED		INCORPORATED		RURAL		URBAN	
FROM	TO		RDWY. MI.	BR. MI.	RDWY. MI.	BR. MI.	RDWY. MI.	BR. MI.	RDWY. MI.	BR. MI.
1934	1939	13.70	11.54	0.02	2.14	0.00	13.68	0.02	0.00	0.00
1940	1952	13.70	11.54	0.02	2.14	0.00	16.72	0.02	1.56	0.00
1953	1954	12.11	9.95	0.02	2.14	0.00	10.53	0.02	1.56	0.00
1955	1967	12.10	9.95	0.02	2.13	0.00	10.52	0.02	1.56	0.00
1968		12.10	10.43	0.02	1.63	0.00	11.02	0.02	1.06	0.00

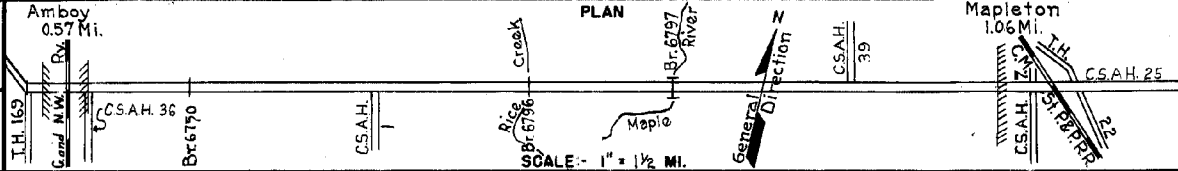
REMARKS: Layout is to scale as of 1934

PREPARED BY  
HIGHWAY PLANNING SURVEY  
IN COOPERATION WITH  
U. S. PUBLIC ROADS ADMINISTRATION

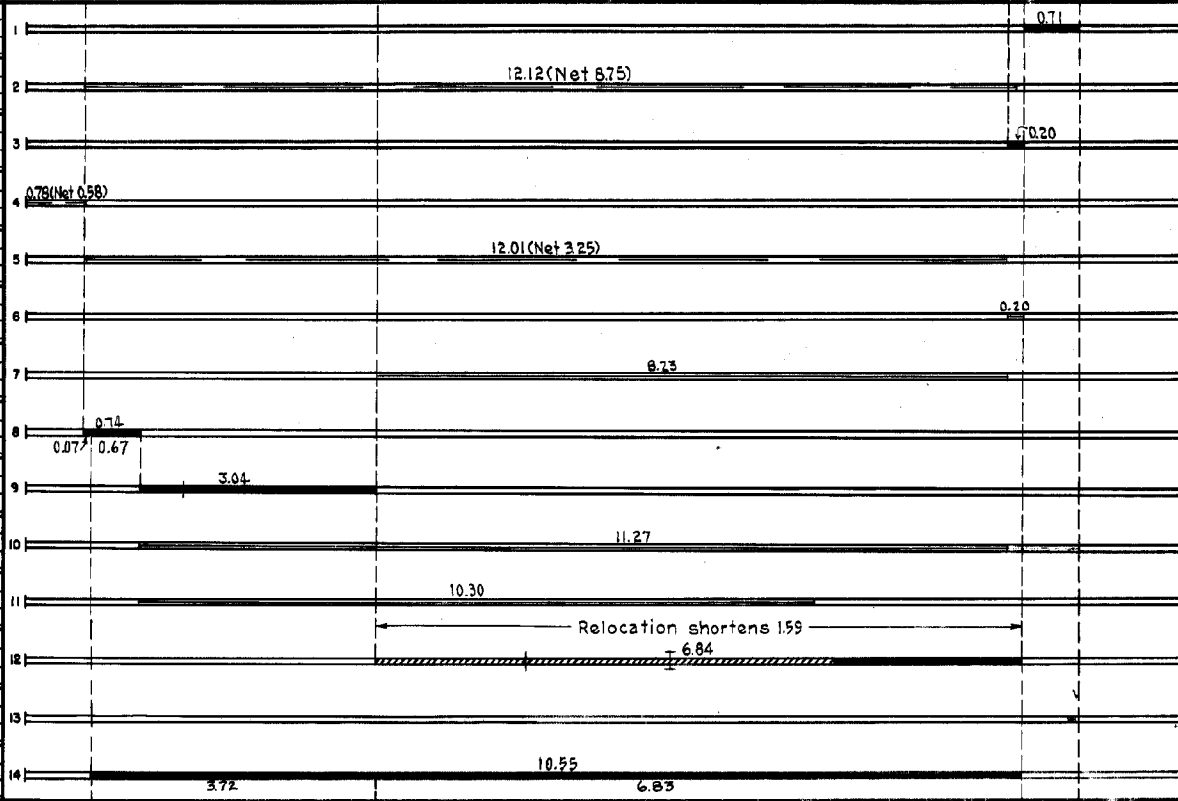
STATE OF MINNESOTA  
DEPARTMENT OF HIGHWAYS  
ROAD LIFE STUDIES  
CONSTRUCTION PROJECT LOG RECORD

CONTROL SECTION 0706  
TRUNK HIGHWAY 30  
COUNTY Blue Earth  
DISTRICT TA

LIMITS: S.Jct.T.H.169 near Amboy - N.Jct.T.H.22 in Mapleton



YEAR BUILT	PROJECT N <sup>o</sup>	DESCRIPTION			CODE N <sup>o</sup>
		TYPE	WIDTH	THICKNESS	
1948	0706-02	Concrete	44'	9'-9"	
M	1948 A.F.E. 6	Grav. Resurfacing (Spots)			2918 C.Y.
C	1949 A.F.E. 32	Bit. Surfacing (0.11 Mi.) Bit. Resurfac. (0.09 Mi.) Mixed Bit.	24'	1"	MG3&SC3, 1900 Gal. Agg. 96 C.Y.
M	1949 A.F.E. 4	Spot Treat. Bit. Surf. Repair			MG3&SC3, 2591 Gal. Agg. 100 C.Y.
M	1949 A.F.E. 6	Grav. Resurfacing (Spots)			448 C.Y.
M	1950 A.F.E. 4	Bit. Surface Repair	Var.		SC-3, 530 Gal. Agg. 24 C.Y.
M	1950 A.F.E. 6	Gravel Resurfacing	24'		2508 C.Y.
C	1950 0706-04	Grading Base (0) Mixed Bit.	30'	2'-9" 1 1/2"	
C	1950 0706-04	Grading Gravel Br. 6750	30'	2'	1.5' Select Material 1100 C.Y./Mi. C 10A D x 46"
M	1951 A.F.E. 6	Gravel Resurfacing			3843 Tons
M	1952 A.F.E. 6	Grav. Resurfacing			5313 Tons
C	1953 0706-05	Grading Salvaged Bit.	30'	1 1/2"	C(1)H-1D12T(Br. 6796)
C	1953 0706-07	Br. 6797	30'		105' B.S.
C	1953 0706-08	Storm Sewers			
C	1955 0706-10	Soil Cement Base Plant Mix Bit.	44'	6" 2"	(34'-44' Top)



YEARS		TOTAL MILES	UNINCORPORATED		INCORPORATED		RURAL		URBAN	
FROM	TO		RDWY. MI.	BR. MI.	RDWY. MI.	BR. MI.	RDWY. MI.	BR. MI.	RDWY. MI.	BR. MI.

REMARKS: See Sheet No. 1  
(1) 9"x44' Gravel Base, Mi. Pt. 0.76 to 0.81; 6"x24' Lime-Stab. Soil Surfaced Base, Mi. Pt. 0.81 to 1.41; 2"x30' Gravel Base, Mi. Pt. 1.41 to 1.92.

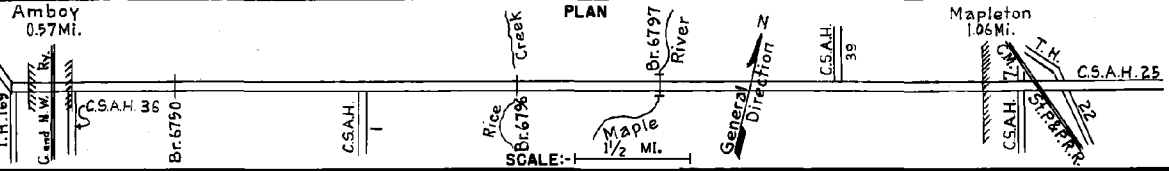
PREPARED BY  
HIGHWAY PLANNING SURVEY  
IN COOPERATION WITH  
U. S. PUBLIC ROADS ADMINISTRATION

STATE OF MINNESOTA  
DEPARTMENT OF HIGHWAYS  
ROAD LIFE STUDIES  
CONSTRUCTION PROJECT LOG RECORD

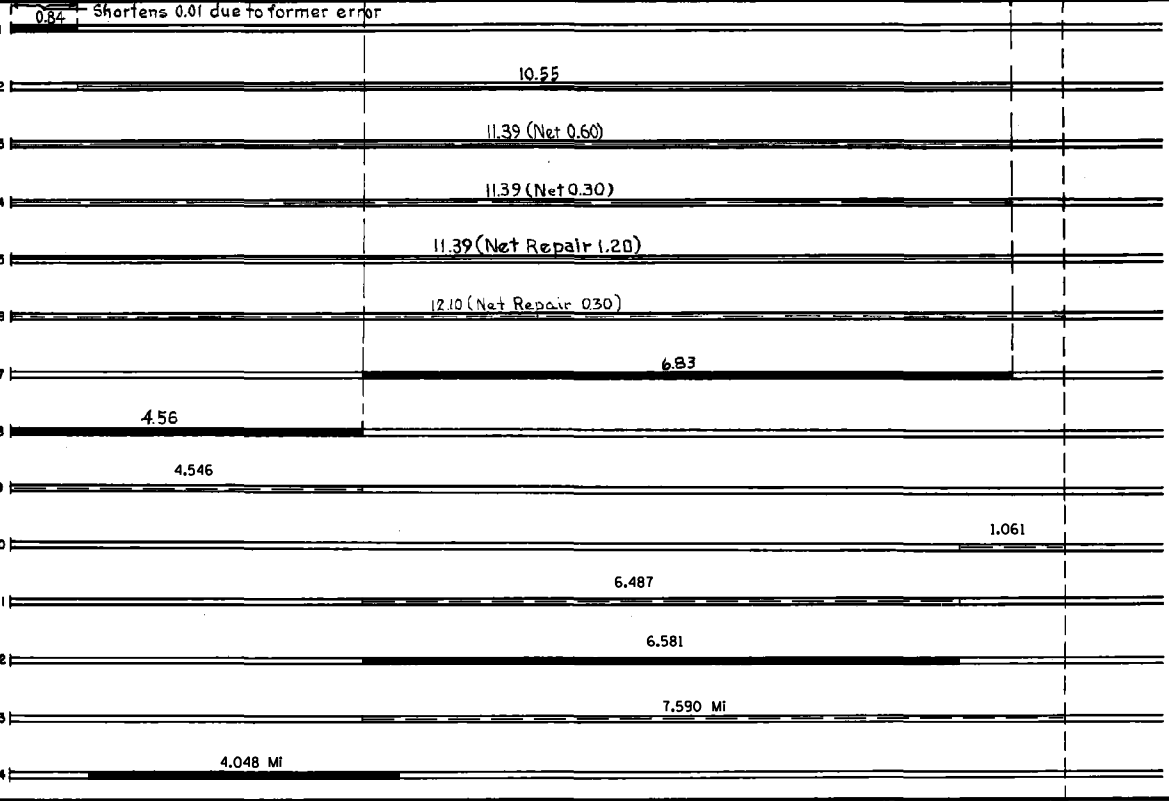
CONTROL SECTION 0706  
TRUNK HIGHWAY 30  
COUNTY Blue Earth  
DISTRICT 7A

LIMITS: South Jct. T.H. 169 near Amboy - North Jct. T.H. 22 in Mapleton

Ref. Pt. 132+00.203 - 144+00.310



YEAR BUILT	PROJECT N°	DESCRIPTION			CODE N°
		TYPE	WIDTH	THICKNESS	
C	0706-12	Sand-Grav. Sub-base	24'	12"	1
1955		Crushed Rock Base	24'	6"	
(2)		Plant Mix Bit.	24'	3"	
M	A.F.E. 605	Bit. Seal Coat	24'		2
M		Spot Treat			3
1962		Bit. Surf. Repair	24'		
M		Spot Treat			4
1963		Bit. Surf. Repair	24'		
M	C	Light Bit. Seal	25'		5
1964		Spot Treat			
M	SF	Bit. Surf. Repair	24'		6
1968		Bit. Surf. Repair	24'	1/2"	
C	0706-16	Grade & Pl. Mix Bit (B)	24'	3"	7
1970		Resurface (4)	24'	3"	
		Bit. overlay (5)	44'	1 1/2"	
C	0706-18	Level Course	24'	1"	8
1972		Plant Mix Bit	24'	1 1/2"	
M		Agg. Shoulders	10'	Var	9
1988	SF	Spot Overlay		2"	
M					10
1990	SF	Spot Overlay		3"	
M					11
1991	SF	Crack Repair			
M					12
1992	SF	Bit. Overlay	24'	2"	
M					13
1994	M94081	Crack Repair			
M					14
1998	0706-23	Bit. Overlay	24'	2"	
		Agg. Base	10'	2"	



YEARS FROM	TOTAL TO	UNINCORPORATED		INCORPORATED		RURAL		URBAN	
		RDWY. MI.	BR. MI.	RDWY. MI.	BR. MI.	RDWY. MI.	BR. MI.	RDWY. MI.	BR. MI.

REMARKS: See Sheet No 1  
 (2) Contract not final but work substantially complete (3) 1 1/4" Agg. 3" Pl. Mix Bit Base; 3" Pl. Mix Bit Surface.  
 (4) 1" Min. Pl. Mix Bit Level; 2" Pl. Mix Bit Base; 3" Pl. Mix Bit Surface. (5) 1 1/2" Pl. Mix Bit Overlay.

