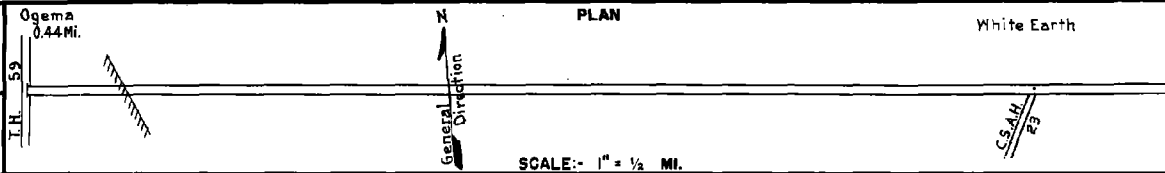


PREPARED BY  
HIGHWAY PLANNING SURVEY  
IN COOPERATION WITH  
U. S. PUBLIC ROADS ADMINISTRATION

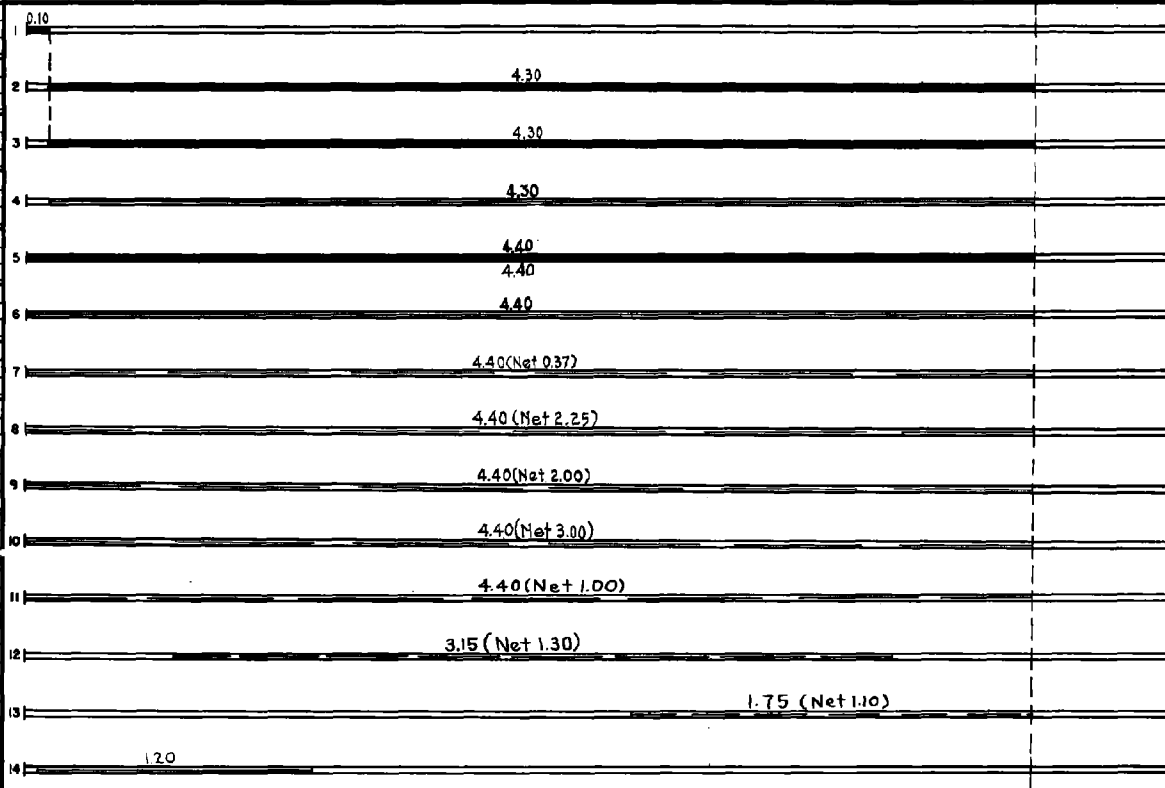
STATE OF MINNESOTA  
DEPARTMENT OF HIGHWAYS  
ROAD LIFE STUDIES  
CONSTRUCTION PROJECT LOG RECORD

CONTROL SECTION 0309  
TRUNK HIGHWAY 224  
COUNTY Becker  
DISTRICT 4A

LIMITS: Jct. T.H. 59 in Ogema - White Earth



YEAR BUILT	PROJECT N <sup>o</sup>	DESCRIPTION			CODE N <sup>o</sup>
		TYPE	WIDTH	THICKNESS	
		Mixed Bit.	82'		
1948	03-521-01	Grading	84'		
1948		Gravel	26'		
M	1950 A.F.E. 6	Gravel Resurfacing			
C	1950 A.F.E. 29	Bit. Surfacing	24'	1 1/2"	
M	1951 A.F.E. 4	Light Bit. Seal	24'		
M	1952 A.F.E. 4	Spot Treat. Bit. Surf. Repair	22'		
M	1953 A.F.E. 604	Spot Treat. Bit. Surf. Repair	24'		
M	1954 A.F.E. 604	Spot Treat. Bit. Surf. Repair	24'		
M	1955 A.F.E. 604	Spot Treat. Bit. Surf. Repair	24'		
M	1958 A.F.E. 604	Spot Treat. Bit. Surf. Repair	24'		
M	1964 SF	Spot Treat. Bit. Surf. Repair	24'		
M	1965 SF	Spot Treat. Bit. Surf. Repair	22'		
M	1967 SF	Bit. Surf. Repair	22'	1"	



YEARS FROM	TO	TOTAL MILES	UNINCORPORATED		INCORPORATED		RURAL		URBAN	
			RDWY MI.	BR. MI.	RDWY MI.	BR. MI.	RDWY MI.	BR. MI.	RDWY MI.	BR. MI.
1949		4.40	3.96	0.00	0.44	0.00	4.40	0.00	0.00	0.00

REMARKS: Layout is to scale as of 1949  
(1) Bit. Resurface center 24' of 82' rdwy. at Mi. Pt. 0.00 to 0.10

