

PREPARED BY  
HIGHWAY PLANNING SURVEY  
IN COOPERATION WITH  
U.S. PUBLIC ROADS ADMINISTRATION

STATE OF MINNESOTA  
DEPARTMENT OF HIGHWAYS  
ROAD LIFE STUDIES  
CONSTRUCTION PROJECT LOG RECORD

CONTROL SECTION 0103  
TRUNK HIGHWAY 18  
COUNTY Aitkin  
DISTRICT 1A

LIMITS: W. Co. Line - Jct. T.H. 65

PLAN

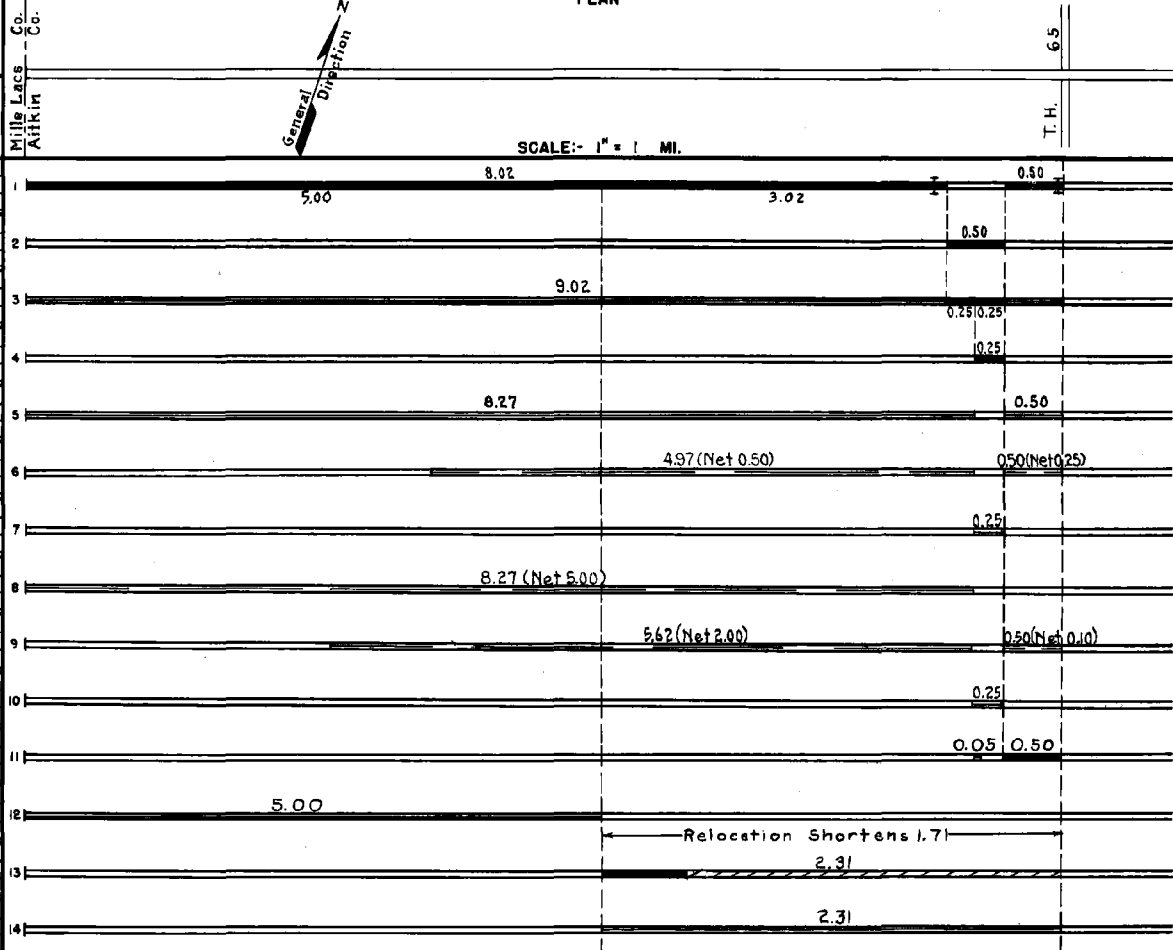


Mile Lacs - Co.  
Aitkin

65  
T.H.

SCALE: 1" = 1 MI.

YEAR BUILT	PROJECT N <sup>o</sup>	DESCRIPTION			CODE N <sup>o</sup>
		TYPE	WIDTH	THICK-NESS	
		Gravel	26'	1 1/2"	No Record of Constr. Added in 1934.
		Br. 1770 & 2714	24'	1 1/2"	30' W.P.T. & 60' E.S.
		Tar Tr. Gravel	26'	1"	No Record of Constr. Added in 1934.
C&M 1941	A.F.E. 25	Reshape & Regrav. Frost Boil Corr.	28'		(1) 404 C.Y./MI. Maint. Dept.
C 1944	A.F.E. 4	Mixed Bit. Bit Surfacing			MC-2, 13720 Gal./MI. Maint. Div.
M 1945	A.F.E. 6	Grav. Resurfacing			468 C.Y./MI. Maint. Div.
M 1948	A.F.E. 6	Grav. Resurfacing (Spots)			1536 C.Y.
M 1953	A.F.E. 827	Base Repair and Restore Bit Surf.			MC-2, 5464 Gal. Agg. 244 C.Y.
M 1953	A.F.E. 606	Spot Regrav. Bit Surf.			2499 Tons
M 1955	A.F.E. 628	Spot Grav. Lifts & Spot Grav. Resurf.	28'		Grav. Lifts 5768 Tons Grav. Surf. 4318 Tons
M 1957	A.F.E. 604	Bit Surf. Repair	24'		MC-2, 4200 Gal. Agg. 325 Tons
C 1958	A.F.E. 818	Sand-Grav. Base Bit Surfacing Mixed Bit	27' 3'-6" 24'	3'-6" 1"	MC-2, 7758 Gal. Agg. 431 Tons (0.05 MI. Bit Surf. Repr.)
M 1958	A.F.E. 606	Grav. Resurfacing			2122 Tons
C 1958	0103-03	Grading Gravel Base Mixed Bit	32' 32' 26'	4" 1 1/2"	on 6' Sand-Gr. Sub-base
M 1961		Light Bit Seal Coat	28'		RS-2, 4770 Gal. Agg. 150 Tons



YEARS		TOTAL MILES	UNINCORPORATED		INCORPORATED		RURAL		URBAN	
FROM	TO		RDWY. MI.	BR. MI.	RDWY. MI.	BR. MI.	RDWY. MI.	BR. MI.	RDWY. MI.	BR. MI.
1934	1957	9.02	8.20	0.01	0.80	0.01	9.00	0.02	0.00	0.00
1958	1968	7.31	7.31	0.00	0.00	0.00	7.31	0.00	0.00	0.00
1969		7.33	7.33	0.00	0.00	0.00	7.33	0.00	0.00	0.00

REMARKS: Layout is to scale as of 1934  
 (1) 0.50 Mi. of Bit Surf. on line 2 was either an error or has apparently reverted to gravel.

