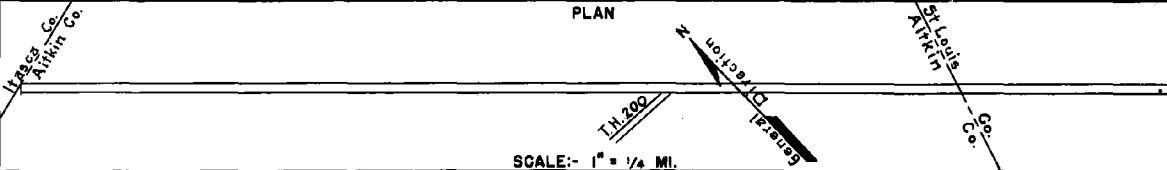


PREPARED BY  
HIGHWAY PLANNING SURVEY  
IN COOPERATION WITH  
U.S. PUBLIC ROADS ADMINISTRATION

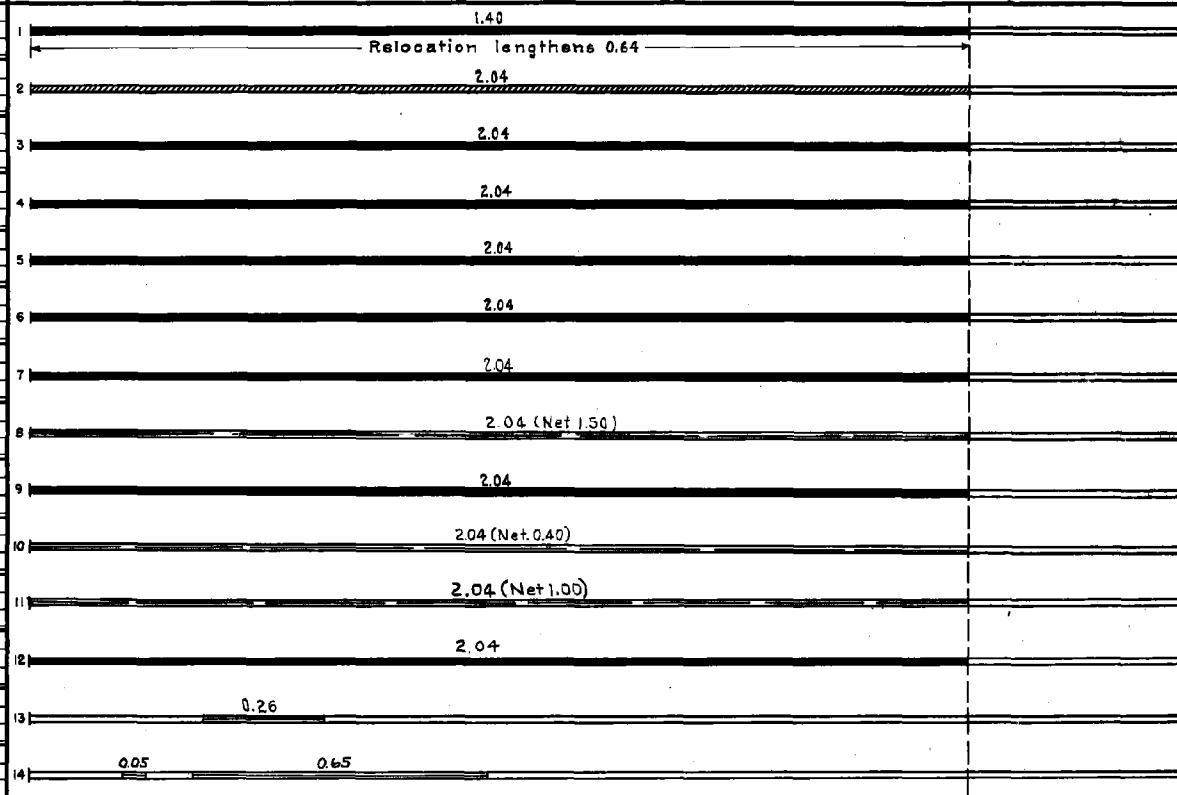
STATE OF MINNESOTA  
DEPARTMENT OF HIGHWAYS  
ROAD LIFE STUDIES  
CONSTRUCTION PROJECT LOG RECORD

CONTROL SECTION 0101  
TRUNK HIGHWAY 2  
COUNTY Atkin  
DISTRICT 1A

LIMITS: N. Co. Line - E. Co. Line



YEAR BUILT	PROJECT N <sup>o</sup>	DESCRIPTION			CODE N <sup>o</sup>
		TYPE	WIDTH	THICKNESS	
		Gravel	20'	2"	No Record of Constr.
1933	2-8-49 B	Grading	40'		
1933	(D) 2-8-49 B	Gravel	32'	3"	Maint. Dept.
1934	(M) 2-8-49 B	Oil Tr. Gravel	28'	1 1/2"	17467 Gal./Mile. Maint. Dept.
1936	2-8-49 B	Stab. Agg. Surf.	28'	3"	(2)
		Stab. Agg. Base	28'	6"	(3)
1936	(H) 2-8-49 B	Tar Tr. Gravel	25'	1 1/2"	14976 Gal./Mile. Maint. Dept.
1939	0101-02	Plant Mix Bitum. Stab. Agg. Base Repair	24'	1 1/2"	On old 1" Bit Mat.
1944	(M) A.F.E. 4	Spot Treat. Bit. Surf. Repair	24'		RT-5, 14638 Gal. Agg. 756 C.Y.
1951	(C) 0101-03	Plant Mix Bit.	24'	1 1/2" added	
1960	(M)	Spot Treat. Bit. Surf. Repair	24'		MC-2, 3843 Gal. Agg. 269 Tons
1963	(M)	Spot Treat. Bit. Surf. Repair	24'	1"	MC-2, 3093 Gal. Agg. 596 Tons
1964	(C) 0101-05	Grading Sub-Base & Base Plant mix Bit	24'	4"	Rt & Lt of Rdwy. in place
1965	(M) SF	Bit. Surf. Repair	24'		Bit. Mix 183 Tons MC-250 Tack 143 Gal.
1968	(M) SF	Bit. Surf. Repair	24'		Bit. Mix 399 Tons MC-250 Tack 250 Gal.



YEARS		TOTAL MILES	UNINCORPORATED		INCORPORATED		RURAL		URBAN	
FROM	TO		RDWY. MI.	BR. MI.	RDWY. MI.	BR. MI.	RDWY. MI.	BR. MI.	RDWY. MI.	BR. MI.
1921	1932	1.40	1.40	0.00	0.00	0.00	1.40	0.00	0.00	0.00
1933		2.04	2.04	0.00	0.00	0.00	2.04	0.00	0.00	0.00

REMARKS: Layout is to Scale as of 1933

(1) This work not under this project number but lies within the limits of this project  
 (2) Gravel-2907 T/Mi. & Binder Soil-335 C.Y./Mi.  
 (3) Gravel-4785 T/Mi. & Binder Soil-449 C.Y./Mi.

