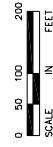
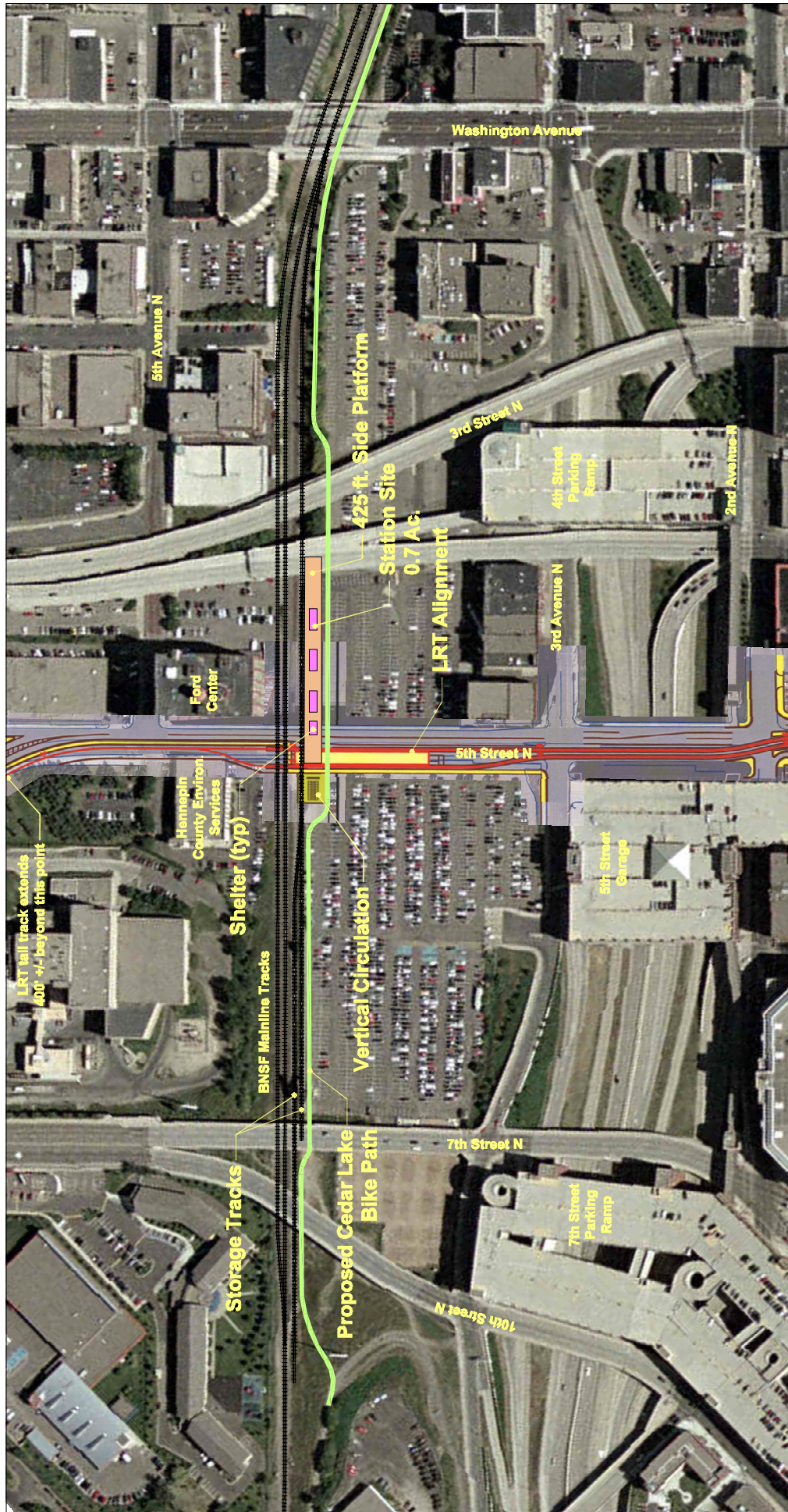


NOTE:
LRT CONNECTION FOR NORTHSTAR FROM 3RD AVENUE NORTH
TO INTERMODAL STATION IN DOWNTOWN MINNEAPOLIS

ENVIRONMENTAL ASSESSMENT
NORTHSTAR CORRIDOR DEVELOPMENT AUTHORITY



FIGURE 3.1
REVISED PREFERRED ALTERNATIVE
EVALUATED IN EA

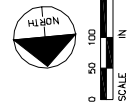
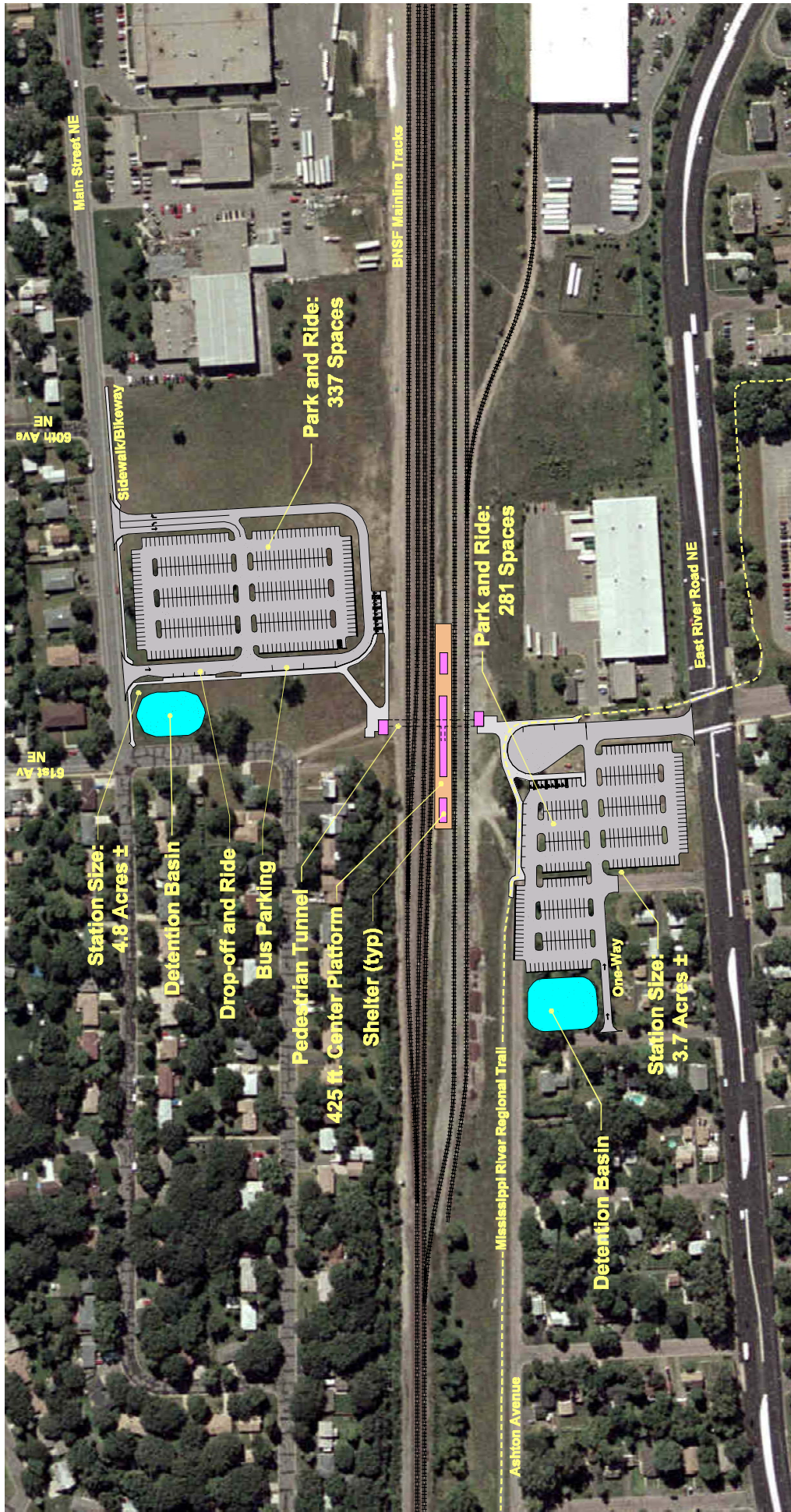


ENVIRONMENTAL ASSESSMENT
 NORTHSTAR CORRIDOR DEVELOPMENT AUTHORITY

MINNESOTA
 DEPARTMENT OF TRANSPORTATION

FIGURE 3.2
 DOWNTOWN MINNEAPOLIS INTERMODAL
 STATION PLAN

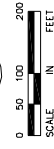




ENVIRONMENTAL ASSESSMENT
NORTHSTAR CORRIDOR DEVELOPMENT AUTHORITY

**FIGURE 3.3
FRIDLEY STATION PLAN**





ENVIRONMENTAL ASSESSMENT
NORTHSTAR CORRIDOR DEVELOPMENT AUTHORITY



FIGURE 3.4
COON RAPIDS STATION PLAN

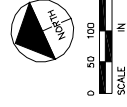
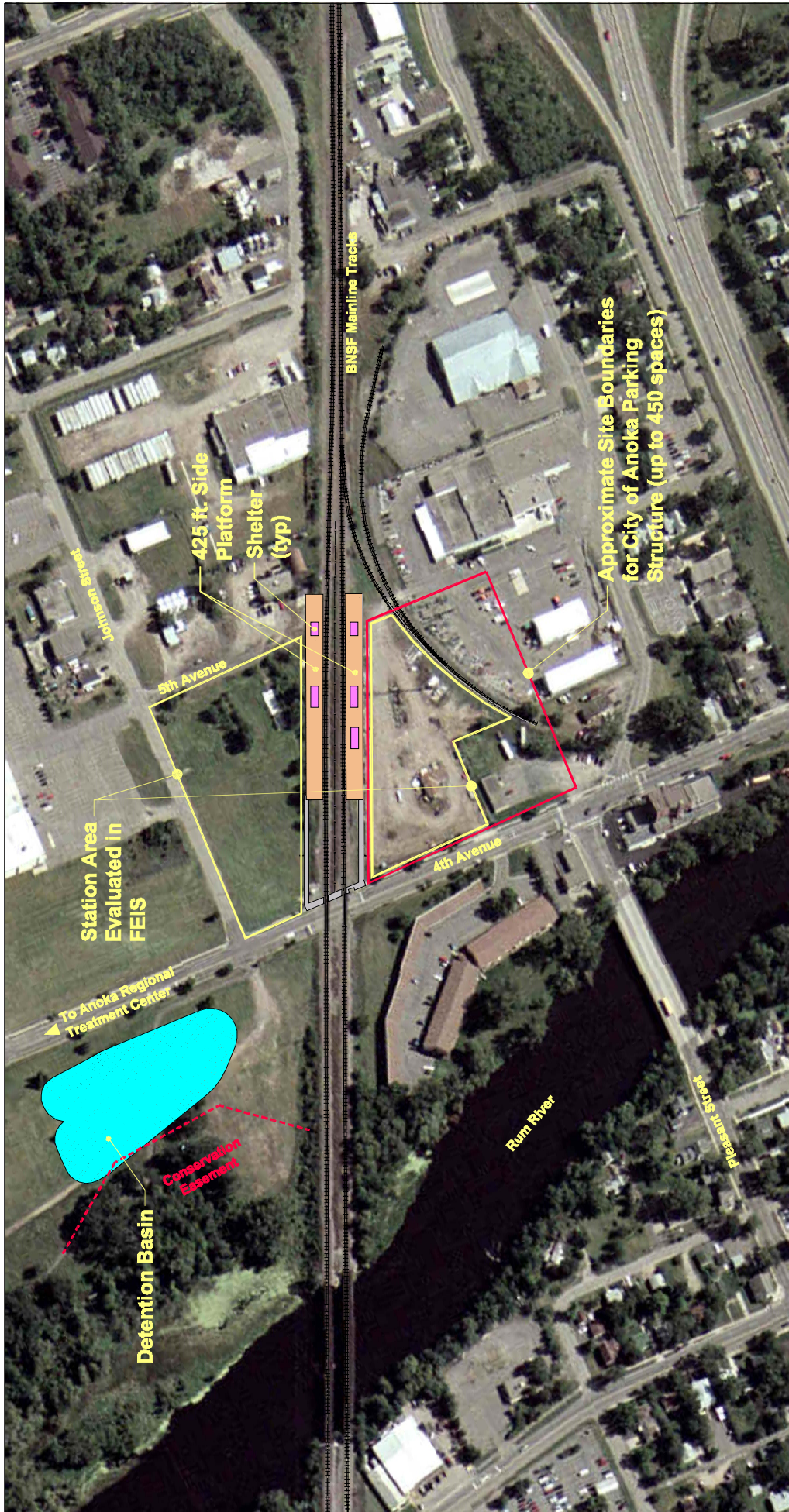


FIGURE 3.5
ANOKA STATION PLAN

ENVIRONMENTAL ASSESSMENT
NORTHSTAR CORRIDOR DEVELOPMENT AUTHORITY



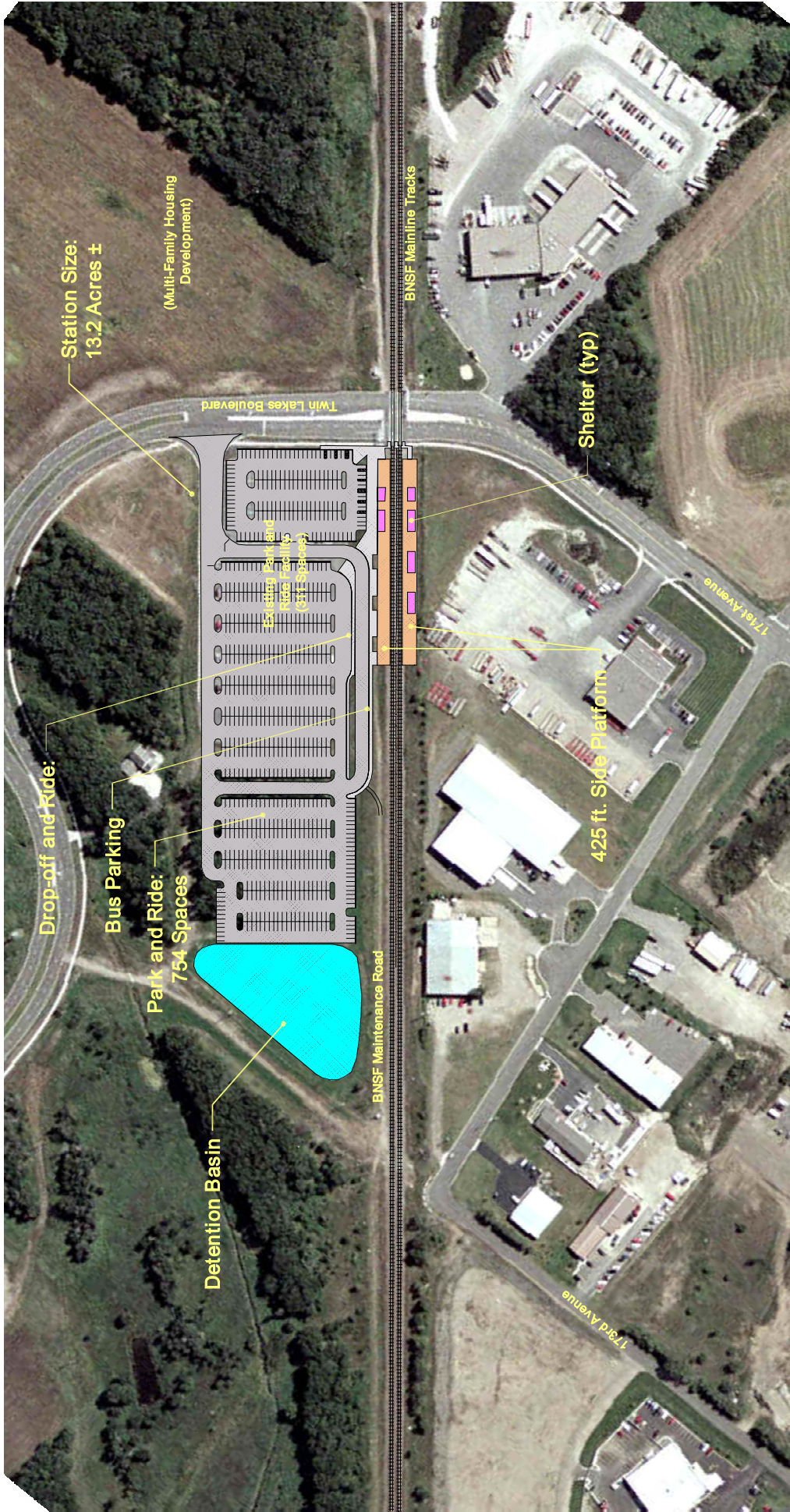
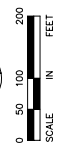
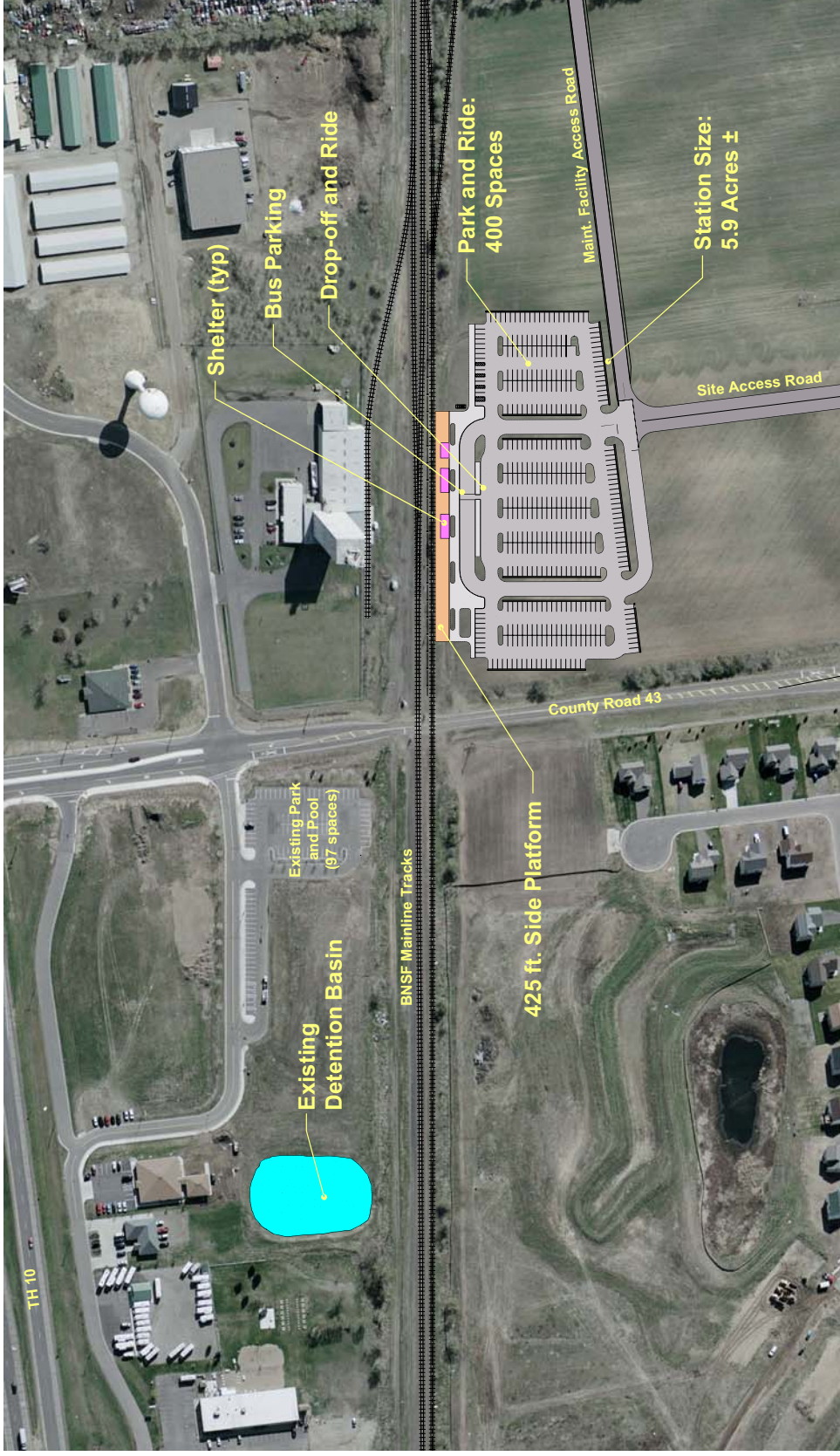


FIGURE 3.6
ELK RIVER STATION PLAN

ENVIRONMENTAL ASSESSMENT
NORTHSTAR CORRIDOR DEVELOPMENT AUTHORITY





ENVIRONMENTAL ASSESSMENT
NORTHSTAR CORRIDOR DEVELOPMENT AUTHORITY

FIGURE 3.7
BIG LAKE STATION PLAN



ENVIRONMENTAL ASSESSMENT
NORTHSTAR CORRIDOR DEVELOPMENT AUTHORITY



FROM APPROXIMATELY MILE POST 16.6 TO MILE POST 21.1 THIRD MAIN WOULD BE ON EAST (RAILROAD NORTH) SIDE OF MAINLINE.

FROM MILE POST 15.1 TO APPROXIMATELY MILE POST 16.6 THIRD MAIN ON WEST (RAILROAD SOUTH) SIDE OF MAINLINE



ENVIRONMENTAL ASSESSMENT
NORTHSTAR CORRIDOR DEVELOPMENT AUTHORITY

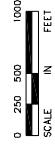
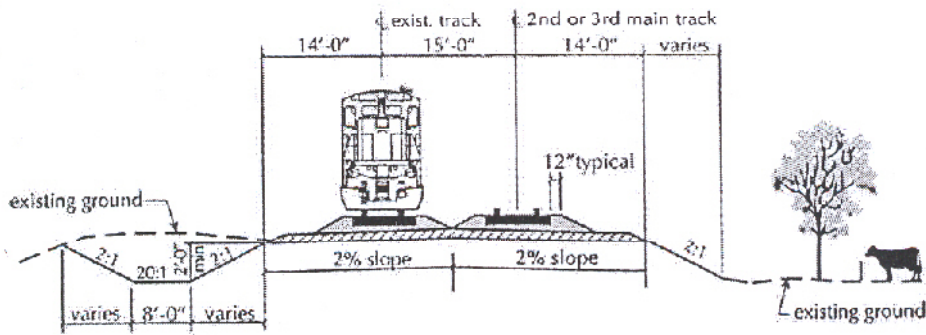
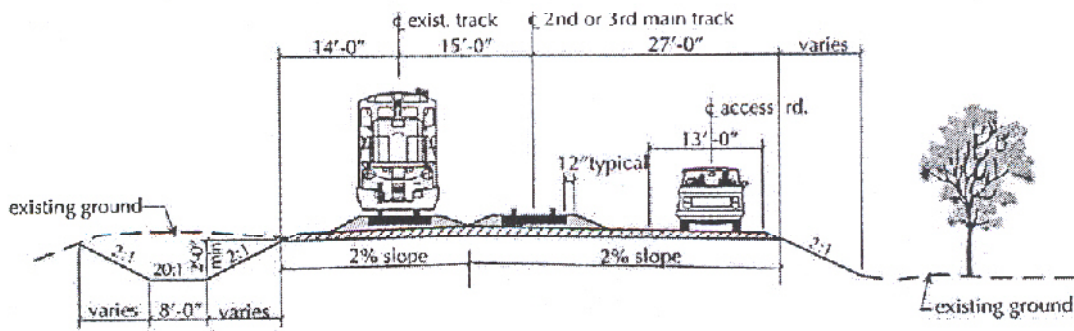


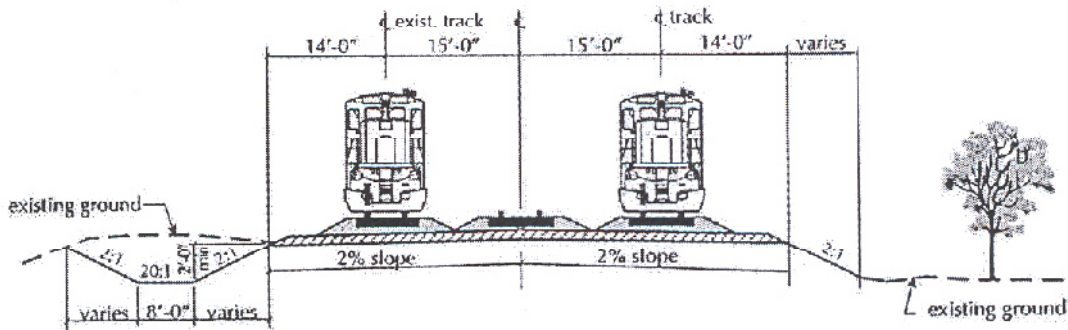
FIGURE 3.8
TRACK CAPACITY IMPROVEMENTS
EVALUATED IN EA



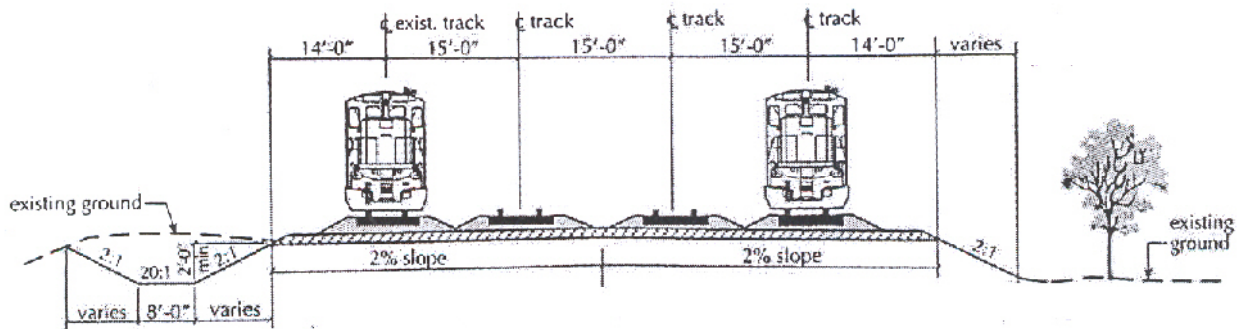
Double Track Tangent with 15'-0" Centers



Double Track Tangent with 15'-0" Centers and 13'-0" Access Road



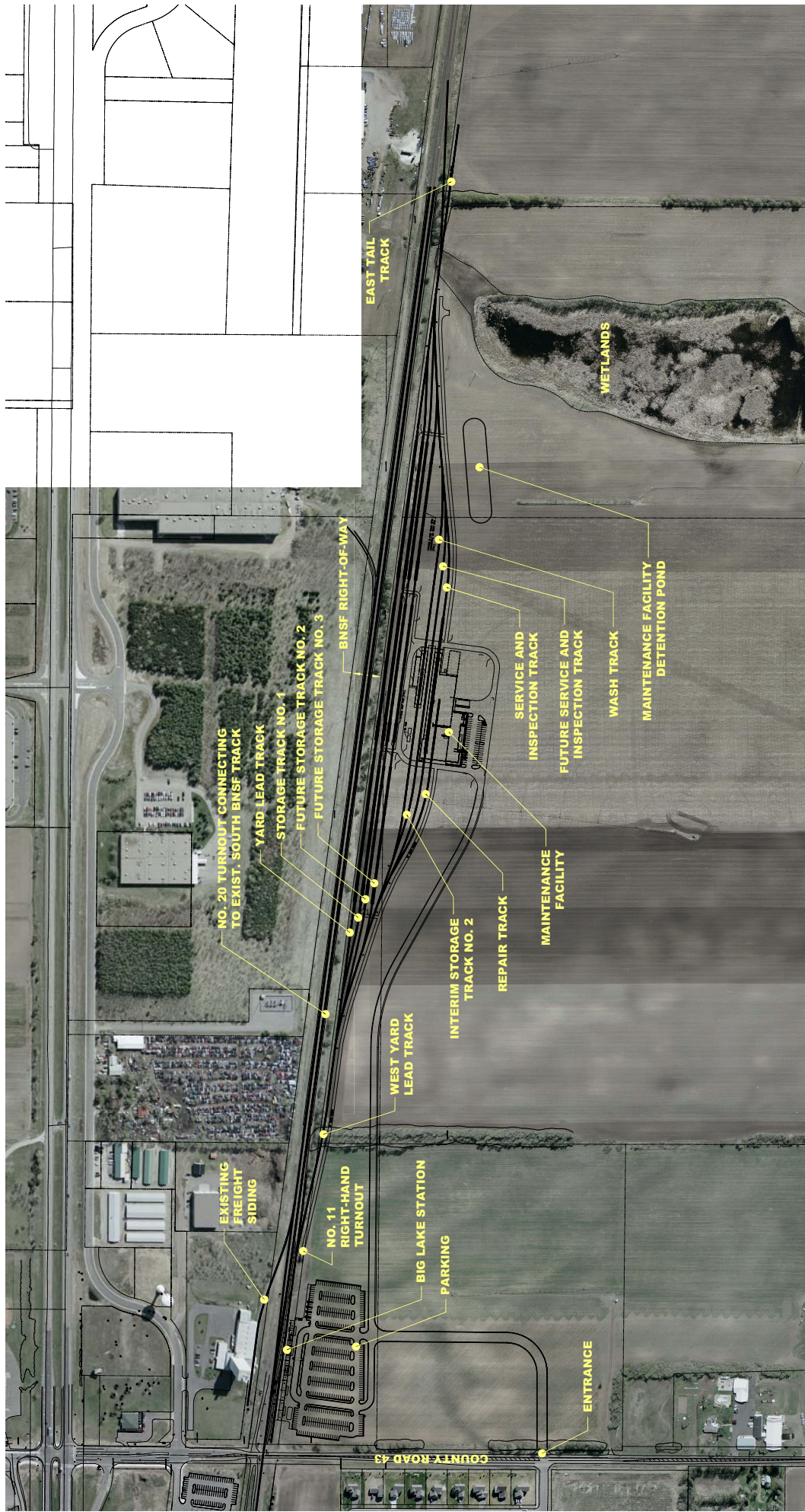
Triple Track Tangent with 15'-0" Centers



Triple Track with Siding Tangent with 15'-0" Centers

NOTE:
THE NORTHTOWN YARD TO RICE CREEK AREA OF CORRIDOR WOULD
HAVE 20 FOOT TRACK CENTERS.

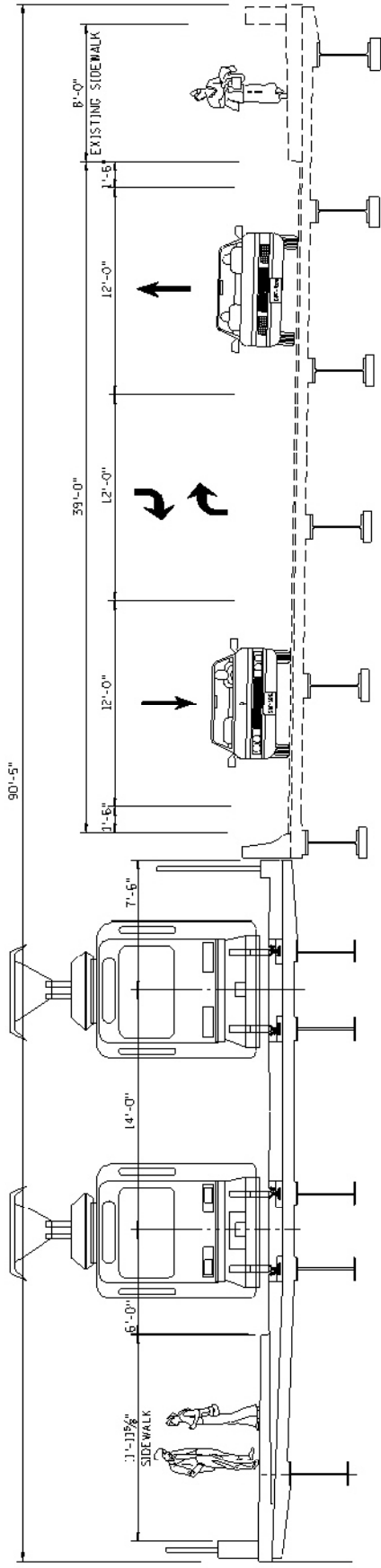




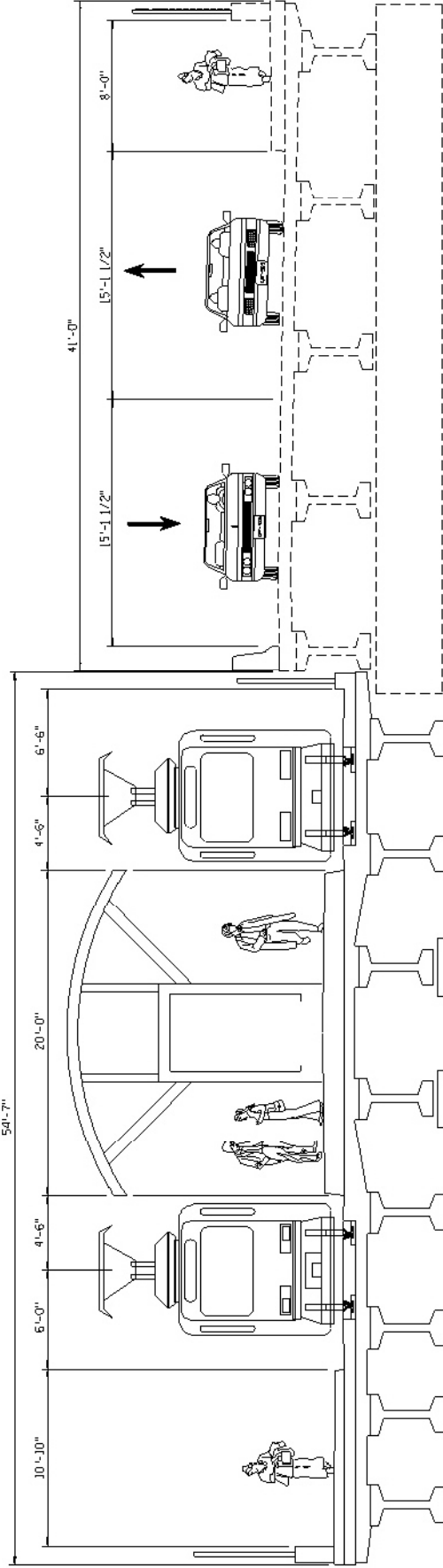
ENVIRONMENTAL ASSESSMENT
 NORTHSTAR CORRIDOR DEVELOPMENT AUTHORITY

FIGURE 3.10
BIG LAKE MAINTENANCE
FACILITY PLAN





5th STREET NORTH BETWEEN 2nd AND 3rd AVENUE NORTH



5th STREET NORTH BETWEEN 3rd AVENUE NORTH AND INTERMODAL STATION