

EXHIBIT 2

Stations & Routes



Chicago to Union Depot in St. Paul = 411 miles

Union Depot in St. Paul to Midway Station = 7 miles

Midway Station to Minneapolis Jct = 4 miles

Minneapolis Jct to Target Field Station (TFS) = 1.6 miles

Minneapolis Jct to Fridley = 6 miles

Fridley to St. Cloud = 58 miles



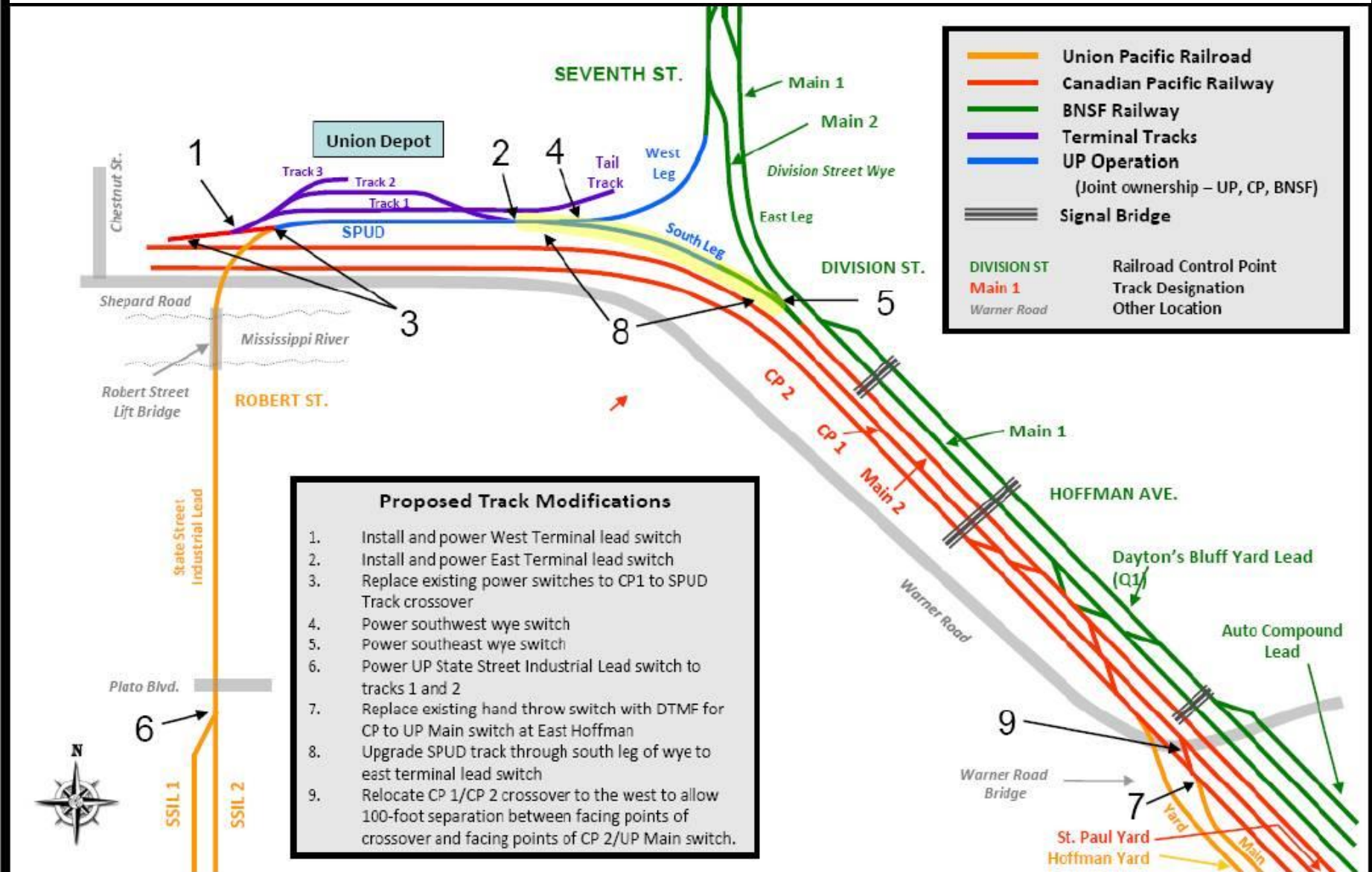
Hastings to St. Paul (East Metro Area)

Union Depot
in St. Paul

SPUD TRACK

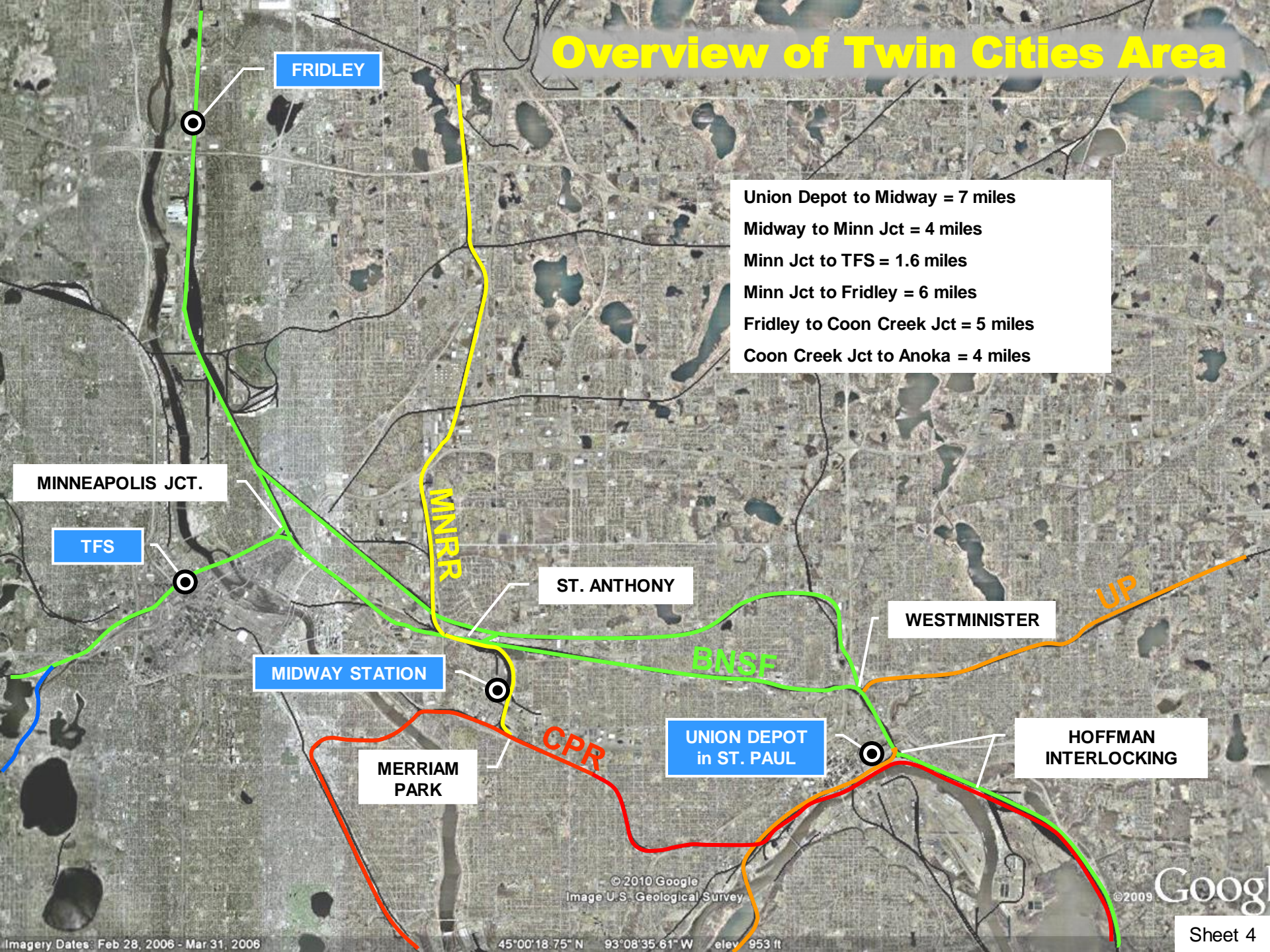
- CPR:** Canadian Pacific Railroad
- BNSF:** BNSF Railway
- PAIRED CPR BNSF:** Shared Tracks Dispatched by BNSF
- SPUD TRACK:** Track Jointly Owned by CPR/BNSF/UP
- MNNR:** Minnesota Commercial Railroad

Union Depot in St. Paul – Track Layout & Ownership



(Note: All power and snow melter equipped switches will be integrated with the appropriate railroad's signaling and central dispatch system. The specific modifications to the signal system associated with these improvements have not been identified.)

Overview of Twin Cities Area



To TFS & St. Cloud

St. Anthony Jct

MNRR



Midway Station

**Closed to Passenger Service
May 7, 2014**

**Amtrak
Midway Station**

Merriam Park Jct to St. Anthony Jct = 2 miles

CPR

Merriam Park Jct

To Union Depot

Route Alternative 1

Chicago – St. Cloud

Via Target Field Station (TFS)

Fridley Northstar
Station

↑
To St. Cloud

Target Field
Station
(TFS)

Minneapolis
Jct.

Midway Station
(MSP)

St. Paul Union Depot (SPUD)

Chicago to St Paul Union Depot = 411 miles

St Paul Union Depot to Midway = 7 miles

Midway to Minneapolis Jct = 4 miles

Minneapolis Jct to TFS = 1.6 miles (times 2) = 3.2 miles

Minneapolis Jct to St. Cloud = 64 miles

Chicago to St. Cloud = 489 miles

⊙ indicates station stop

■ indicates no station stop

3.62 mi

© 2011 Google
Image U.S. Geological Survey

©2010 Google

Minneapolis Jct. to TFS



Minneapolis Jct. to TFS
North Bridge at Nicollet Island
(facing North)



BNSF Storage Track

BNSF Main Track

Minneapolis Jct. to TFS
South Bridge at Nicollet Island
(facing South)



Minneapolis Target Field Station (TFS)



© 2013 Google

© 2013 Google

Google Maps

Sheet 10

Construct New TFS Station Track

TFS
Station

Target
Field

New
Station
Track

Existing Double Track to St. Cloud

Coon Creek Junction

Construct 3rd Main Track

Fridley

Interstate

BNSF Northtown Yard



**BNSF Triple Track
Coon Creek Jct to
Interstate**

Minneapolis

St. Cloud, MN

Existing St. Cloud
Amtrak Station



To St. Paul →

St. Cloud Station to BNSF Yard

Potential Layover
Track at BNSF Yard
(TBD)

Amtrak
Station

To St. Paul

St Cloud, MN, USA Saint Cloud

Route Alternative 2

Chicago - St. Cloud

Via Union Depot and Fridley

Chicago to St Paul Union Depot = 411 miles

St Paul Union Depot to Midway Station = 7 miles

Midway to Minneapolis Jct = 4 miles

Minneapolis Jct to Fridley = 6 miles

Fridley to St. Cloud = 58 miles

Chicago to St. Cloud = 486 miles

⊙ indicates station stop

■ indicates no station stop

**Fridley Northstar
Station**

↑ To St. Cloud

**Minneapolis
Jct.**

**Minneapolis
Target Field
Station
(TFS)**

**Midway Station
(Closed)**

Union Depot in St. Paul

3.62 mi

© 2011 Google
Image U.S. Geological Survey

© 2010 Google

Fridley Northstar Station

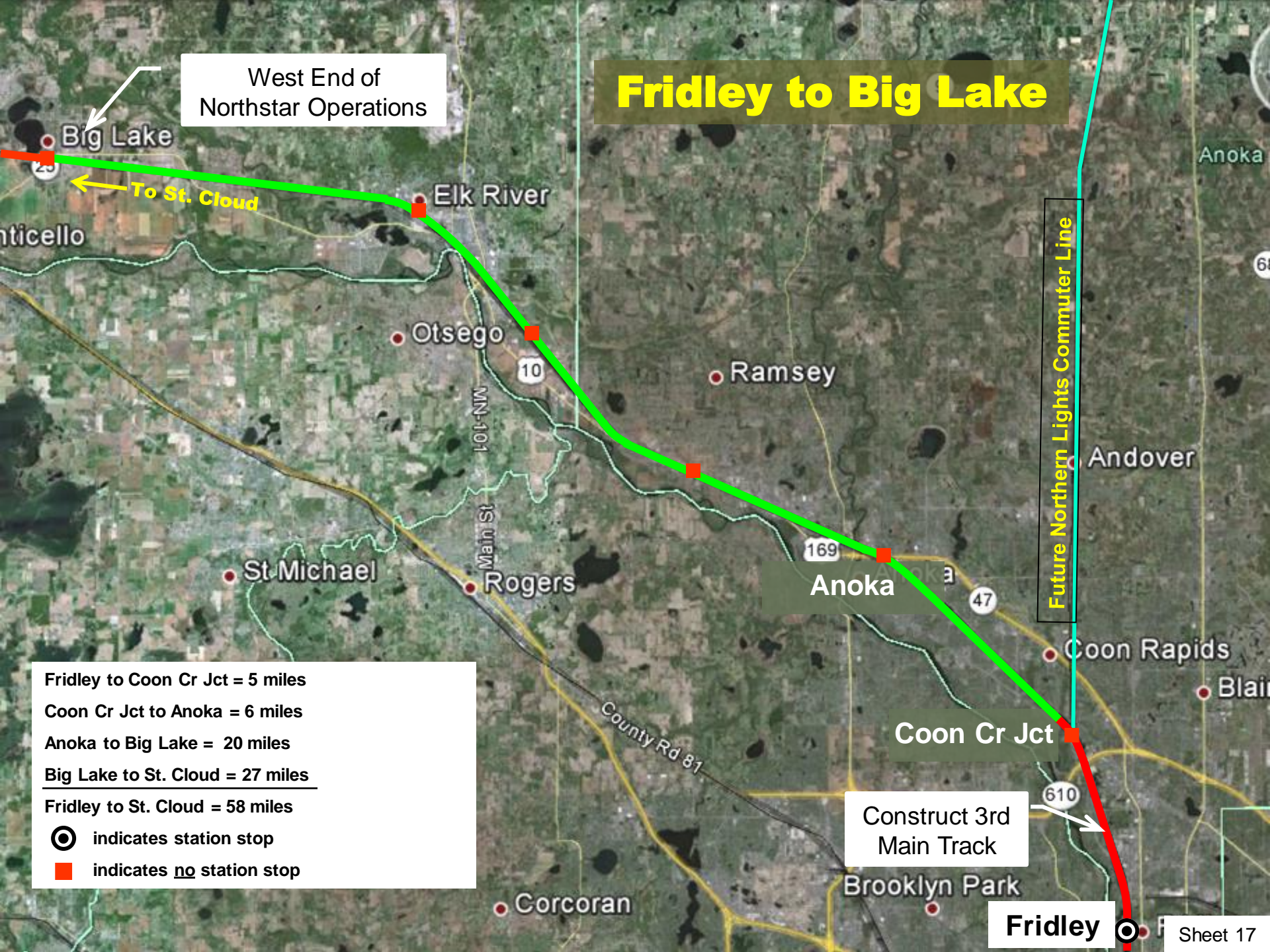
Existing Fridley Northstar Station

Construct 3rd Main Track
Interstate to Coon Creek Junction

To St. Cloud

To Union Depot

Main St NE



West End of
Northstar Operations

Fridley to Big Lake

Future Northern Lights Commuter Line

- Fridley to Coon Cr Jct = 5 miles
 - Coon Cr Jct to Anoka = 6 miles
 - Anoka to Big Lake = 20 miles
 - Big Lake to St. Cloud = 27 miles
 - Fridley to St. Cloud = 58 miles
- ⊙ indicates station stop
- indicates no station stop

Construct 3rd
Main Track

Fridley

Big Lake to St. Cloud

St. Cloud

Santiago

Sherburne

St Augusta

Clearwater

Clear Lake

Construct 2nd
Main Track

Becker

Big Lake

Monticello

South Haven

Minneapolis Jct to Fridley = 6 miles

Fridley to Big Lake = 31 miles

Big Lake to St. Cloud = 27 miles

Minneapolis Jct to St. Cloud = 64 miles

⊙ indicates station stop

■ indicates no station stop

Alternative 3

Chicago - Minneapolis

Via Union Depot in St. Paul

Chicago to St Paul Union Depot = 411 miles

St Paul Union Depot to Midway = 7 miles

Midway to Minn Jct = 4 miles

Minn Jct to TFS = 1.6 miles

Chicago to TFS = 424 miles

⊙ indicates station stop

■ indicates no station stop

Minneapolis
Target Field
Station
(TFS)

■ Minneapolis
Jct.

■ Midway Station
(Closed)

Union Depot in St. Paul

3.62 mi

© 2011 Google
Image U.S. Geological Survey

© 2010 Google

Alternative 4

Service Terminates at Union Depot in St. Paul

Fridley Northstar
Station

Minneapolis
Target Field
Station
(TFS)

Minneapolis
Jct.

Midway Station
(Closed)

Union Depot in St. Paul

Chicago to St. Paul Union Depot = 411 miles



indicates station stop



indicates no station stop

3.62 mi

© 2011 Google
Image U.S. Geological Survey

© 2010 Google